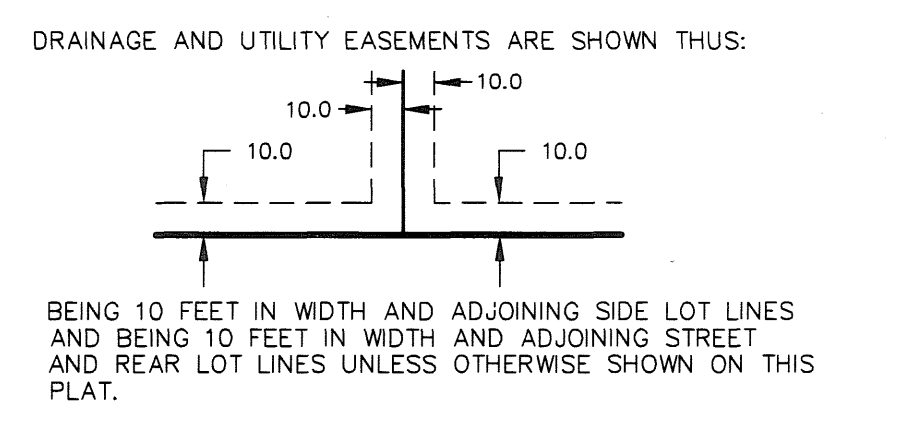
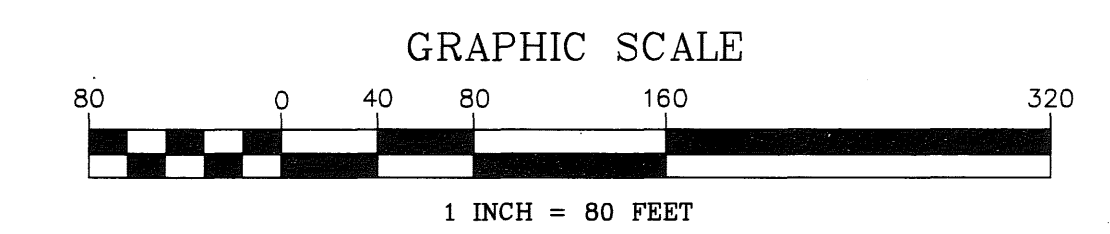
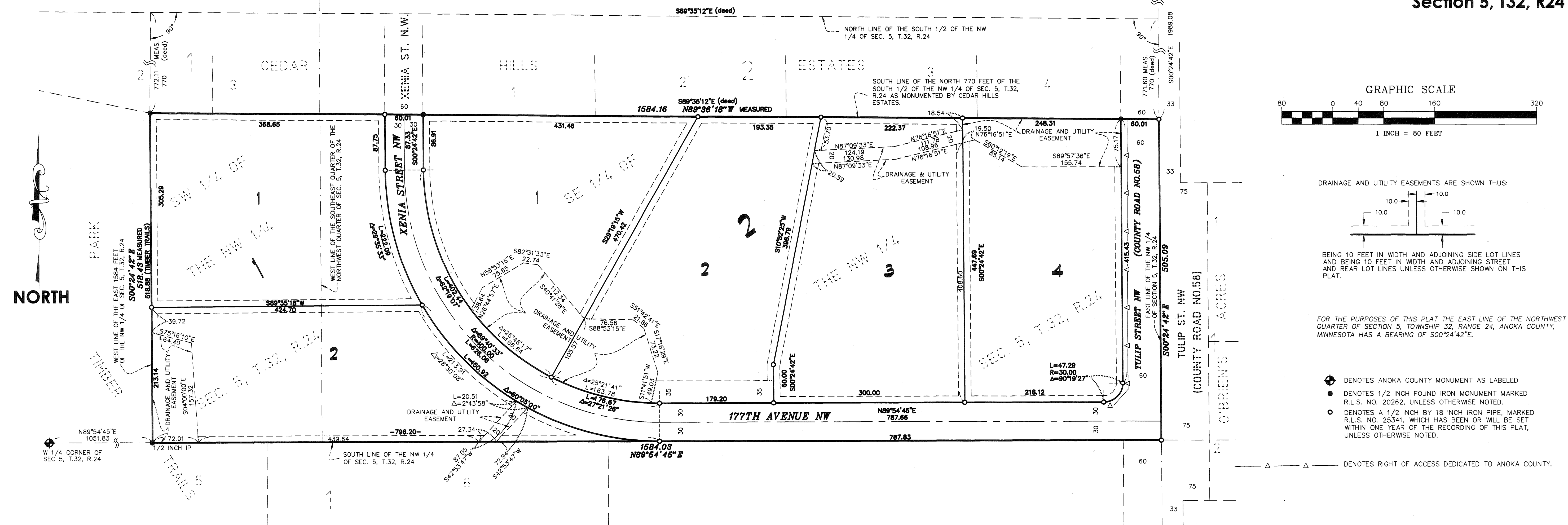


TIMBER TRAILS SECOND ADDITION

BK 15 Abst Pg 37

City of Andover
County of Anoka
Section 5, T32, R24



FOR THE PURPOSES OF THIS PLAT THE EAST LINE OF THE NORTHWEST QUARTER OF SECTION 5, TOWNSHIP 32, RANGE 24, ANOKA COUNTY, MINNESOTA HAS A BEARING OF S00°24'42\"/>

- ⊕ DENOTES ANOKA COUNTY MONUMENT AS LABELED
- DENOTES 1/2 INCH FOUND IRON MONUMENT MARKED R.L.S. NO. 20262, UNLESS OTHERWISE NOTED.
- DENOTES A 1/2 INCH BY 18 INCH IRON PIPE, MARKED R.L.S. NO. 25341, WHICH HAS BEEN OR WILL BE SET WITHIN ONE YEAR OF THE RECORDING OF THIS PLAT, UNLESS OTHERWISE NOTED.
- △ DENOTES RIGHT OF ACCESS DEDICATED TO ANOKA COUNTY.

KNOW ALL PERSONS BY THESE PRESENTS: That Landmark Community Bank, a national association, owner of the following described property:

That part of the South Half of the Northwest Quarter of Section 5, Township 32, Range 24, described as follows, to-wit:
That part of the East 1584 feet of said South Half of the Northwest Quarter lying South of a line drawn parallel to the North line of said South Half of the Northwest Quarter of said Section 5, and distant 770 feet South from said North line, except road.

Has caused the same to be surveyed and platted as TIMBER TRAILS SECOND ADDITION and does hereby dedicate to the public for public use the public ways and drainage and utility easements as shown on this plat. Also dedicating to the County of Anoka the right of access onto County Road No. 58 as shown on the plat.

In witness whereof said Landmark Community Bank, a national association, has caused these presents to be signed by its proper officer this 2nd day of December, 2010.

Landmark Community Bank

Kevin L. Johnson, Branch President

STATE OF MINNESOTA
COUNTY OF ANOKA
This instrument was acknowledged before me this 2nd day of December, 2010 by Kevin L. Johnson, Branch President, of Landmark Community Bank, a national association, on behalf of the association.

Notary Public, ANOKA County, Minnesota
My Commission Expires July 31, 2012

I Daniel W. Obermiller do hereby certify that this plat was prepared by me or under my direct supervision; that I am a duly Licensed Land Surveyor in the State of Minnesota; that this plat is a correct representation of the boundary survey; that all mathematical data and labels are correctly designated on this plat; that all monuments depicted on this plat have been, or will be correctly set within one year; that all water boundaries and wet lands, as defined in Minnesota Statutes, Section 505.01, Subd. 3, as of the date of this certificate are shown and labeled on this plat; and all public ways are shown and labeled on this plat.

Dated this 2nd day of December, 2010.

Daniel W. Obermiller
Daniel W. Obermiller, Licensed Land Surveyor
Minnesota Registration No. 25341

STATE OF MINNESOTA
COUNTY OF ANOKA

This instrument was acknowledged before me this 2nd day of December, 2010 by Daniel W. Obermiller.

Daniel W. Obermiller
Notary Public, Anoka County, Minnesota
My Commission Expires 12-1-2015

City Council, City of Andover, Minnesota

This plat of TIMBER TRAILS SECOND ADDITION was approved and accepted by the City Council of the City of Andover, Minnesota at a regular meeting thereof held this 10th day of December, 2010 and said plat is in compliance with the provisions of Minnesota Statutes, Section 505.03, Subd. 2.

City Council, City of Andover, Minnesota

By: [Signature] Mayor By: [Signature] Clerk

County Surveyor
I hereby certify that in accordance with Minnesota Statutes, Section 505.021, Subd. 11, this plat has been reviewed and approved this 6th day of December, 2010.

Larry D. Holm
Larry D. Holm
Anoka County Surveyor

2019188.001
STATE OF MINNESOTA
COUNTY OF ANOKA
I hereby certify that this instrument was filed in the office of the County Recorder on this 6th day of December, 2010 at 12:38 o'clock P.M.
and was duly recorded in book 15 Abst 37
Larry W. Dolan
County Recorder of Titles
MDT

I HEREBY CERTIFY THAT THE DEFERRED AND DELINQUENT TAXES ON THE LANDS DESCRIBED WITHIN ARE PAID AND THE TAXPAYER IS ENTERED Dec 6 2010
Larry W. Dolan
PROPERTY TAX ADJUSTMENT CLERK



\$56.00