

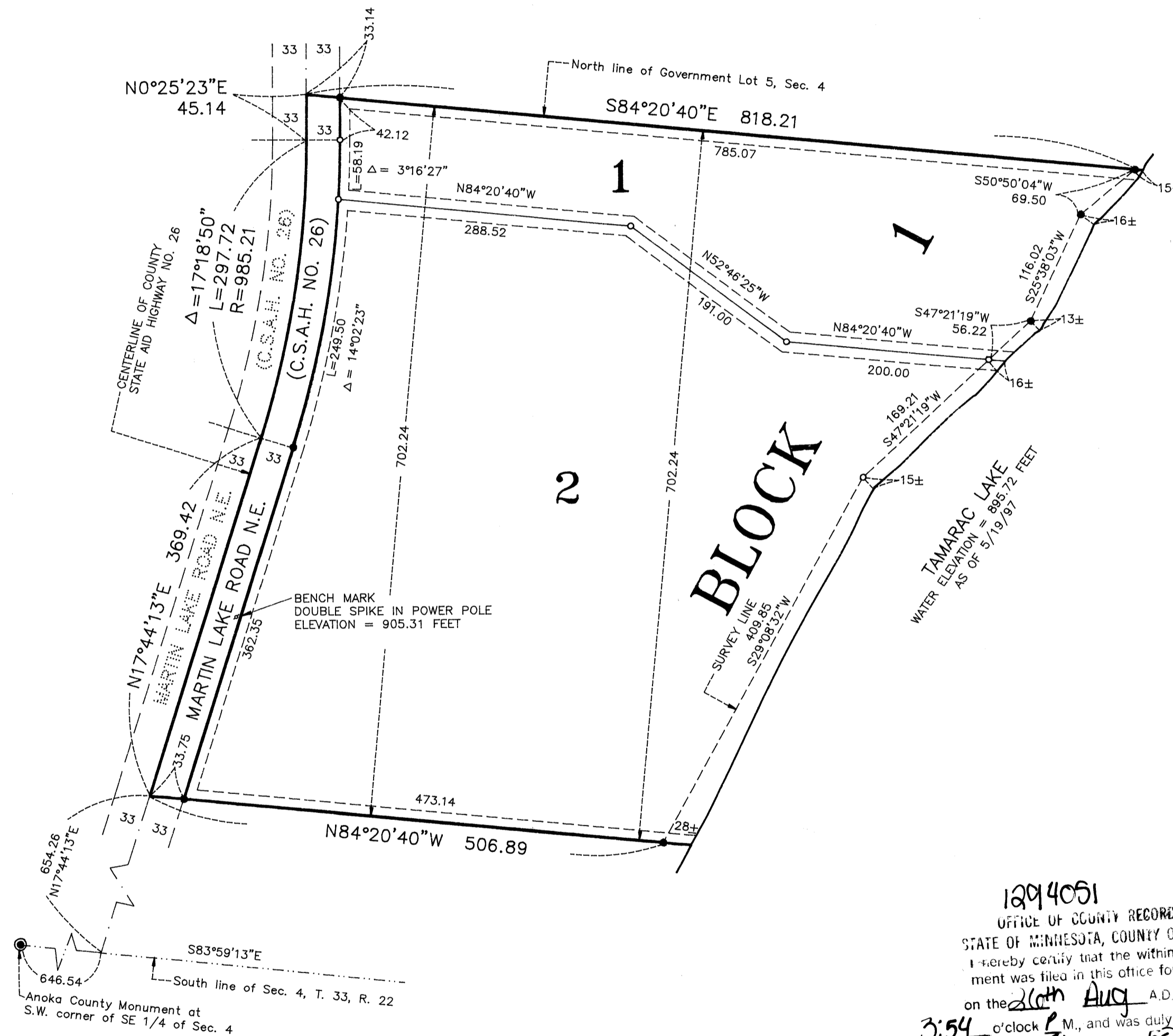
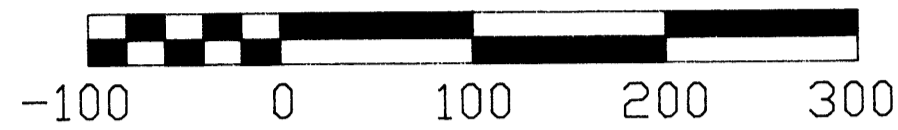
TIMMERS PRESERVE

TOWNSHIP OF LINWOOD

COUNTY OF ANOKA



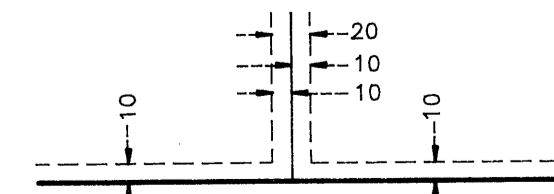
SCALE: 1 INCH = 100 FEET



Anoka County Monument at S.W. corner of SE 1/4 of Sec. 4

○ DENOTES 1/2 INCH IRON PIPE SET
● DENOTES 1/2 INCH IRON PIPE FOUND
NOTE: FOR THE PURPOSES OF THIS PLAT, THE SOUTH LINE OF SEC. 4, T. 33, R. 22 IS ASSUMED TO BEAR S83°59'13"E.
NOTE: ALL ELEVATIONS SHOWN ARE NGVD 1929 DATUM.

DRAINAGE AND UTILITY EASEMENTS SHOWN THUS:



BEING 10 FEET WIDE ON EACH SIDE OF FRONT AND SIDE LOT LINES UNLESS OTHERWISE SHOWN ON THE PLAT

1294051
OFFICE OF COUNTY RECORDER
STATE OF MINNESOTA, COUNTY OF ANOKA
I hereby certify that the within instrument was filed in this office for record on the 26th Aug A.D., 1997 at 3:54 o'clock P.M., and was duly recorded in book 54 page 50
Edward M. Trestka
County Recorder
By: K.H.J. Deputy

I HEREBY CERTIFY THAT THE CURRENT AND DELINQUENT TAXES ON THE LANDS DESCRIBED WITHIN ARE PAID AND THE TRANSFER IS
ENTERED August 26, 1997
EDWARD M. TRESTKA
PROPERTY TAX ADMINISTRATOR
By: Dennis S. Remington
DEPUTY PROPERTY TAX ADMINISTRATOR

KNOW ALL MEN BY THESE PRESENTS: That Lyle B. Timmers and Sylvia M. Timmers, husband and wife, owners and proprietors of the following described property situated in the County of Anoka, State of Minnesota, to-wit:
The North 702.24 feet of Government Lot 5, Section 4, Township 33, Range 22, Anoka County, Minnesota, lying easterly of the centerline of County State Aid Highway No. 26.
Have caused the same to be surveyed and platted as TIMMERS PRESERVE and do hereby donate and dedicate to the public for public use forever the Road and also dedicate the drainage and utility easements on shown on the plat. In witness whereof said Lyle B. Timmers and Sylvia M. Timmers have hereunto set their hands this 18th day of August, 1997.

SIGNED:
Lyle B. Timmers
Sylvia M. Timmers
The foregoing instrument was acknowledged before me this 18th day of August, 1997, by Lyle B. Timmers and Sylvia M. Timmers, husband and wife.

Renée Alexander
Notary Public, Chicago County, Minnesota
My Commission expires 1-31-00

RENEE ALEXANDER
NOTARY PUBLIC-MINNESOTA
CHISAGO COUNTY
My Comm. Expires Jan. 31, 2000

I hereby certify that I have surveyed and platted the land described in the dedication on this plat as TIMMERS PRESERVE; that the plat is a correct representation of said survey; that all distances are correctly shown on said plat in feet and hundredths of a foot; that the monuments have been correctly placed in the ground as shown; that the outside boundaries are correctly designated on said plat; and that there are no wet lands or public highways to be designated on said plat other than as shown thereon.

Dale Boklep
Dale Boklep, Registered Land Surveyor
Minnesota Registration No. 12002

STATE OF MINNESOTA
COUNTY OF ANOKA
The surveyor's certificate was acknowledged before me a Notary Public, this 13th day of August, 1997, by Dale Boklep, Land Surveyor.

Mary G. Koski
Notary Public, Anoka County, Minnesota
My Commission expires Jan. 31, 2000

MARY G. KOSKI
NOTARY PUBLIC-MINNESOTA
ANOKA COUNTY
My Commission Expires Jan. 31, 2000

TOWNSHIP OF LINWOOD:
That plat of TIMMERS PRESERVE was approved by the Town Board of Linwood at a meeting this 21 day of August, 1997. If applicable, the written comments and recommendations of the Commissioner of Transportation and the County Highway Engineer have been received by the Township or the prescribed 30 day period has elapsed without receipt of such comments and recommendations, as provided by Minnesota Statutes, Section 505.03, Subdivision 2.

Attest: Marcia A. Fabricius Clerk
Signed: Joseph E. Dwyer Jr. Chairman

Checked and approved this 22nd day of Aug., 1997.

By: W. D. Anderson
Anoka County Surveyor

Recommended for approval this 26th day of August, 1997.

By: Joseph Anderson
Anoka County Highway Engineer

This plat was approved and accepted by the Board of County Commissioners of the County of Anoka, State of Minnesota at a regular meeting thereof held this 26th day of Aug., 1997.

By: Dan E. ... County Administrator
John Jay M. ... County Administrator

This plat was approved as to form and execution on this 26th day of August, 1997.

By: Anthony C. Pshumbo
Anoka County Attorney

LINWOOD TOWNSHIP
ANOKA COUNTY



REG 970 58568 Amount \$15600