

TOWER ADDITION

KNOW ALL PERSONS BY THESE PRESENTS: That the City of Centerville, a Municipal Corporation under the laws of Minnesota, owner of the following described property:

That part of the Southeast Quarter of the Northeast Quarter of Section 23, Township 31, Range 22, Anoka County, Minnesota, described as follows:

The South 277.10 feet of the North 588.47 feet of that part of said Southeast Quarter of the Northeast Quarter lying between a line that is parallel to and 956.5 feet Easterly from the West line of said Southeast Quarter of the Northeast Quarter and a line that is parallel to and 50 feet Westerly from the East line of said Southeast Quarter of the Northeast Quarter, Anoka County, Minnesota, except Parcel 128 of ANOKA COUNTY HIGHWAY RIGHT-OF-WAY PLAT NO. 67.

Has caused the same to be surveyed and platted as TOWER ADDITION and does hereby dedicate to the public for public use the drainage and utility easements as shown on this plat.

In witness whereof said City of Centerville, a Municipal Corporation under the laws of Minnesota, has caused these presents to be signed by its proper officer this 10 day of December, 2014.

City of Centerville
Tom Wilharker Mayor

STATE OF MINNESOTA
COUNTY OF Anoka

This instrument was acknowledged before me this 10 day of December, 2014 by Tom Wilharker Mayor of the City of Centerville, a Municipal Corporation under the laws of Minnesota, on behalf of the corporation.

Kris Sweeney
Notary Public, Anoka County, Minnesota
My Commission Expires Jan. 31, 2015



I Jason E. Rud do hereby certify that this plat was prepared by me or under my direct supervision; that I am a duly Licensed Land Surveyor in the State of Minnesota; that this plat is a correct representation of the boundary survey; that all mathematical data and labels are correctly designated on this plat; that all monuments depicted on this plat have been, or will be correctly set within one year; that all water boundaries and wet lands, as defined in Minnesota Statutes, Section 505.01, Subd. 3, as of the date of this certificate are shown and labeled on this plat; and all public ways are shown and labeled on this plat.

Dated this 9th day of December, 2014.

Jason E. Rud
Jason E. Rud, Licensed Land Surveyor
Minnesota License No. 41578

STATE OF MINNESOTA
COUNTY OF Anoka

This instrument was acknowledged before me this 9th day of December, 2014 by Jason E. Rud.

Nicole A. Johnson
Notary Public, Anoka County, Minnesota
My Commission Expires Jan. 31, 2020

City Council, City of Centerville, Minnesota

This plat of TOWER ADDITION was approved and accepted by the City Council of the City of Centerville, Minnesota at a regular meeting thereof held this 12 day of November, 2014, and said plat is in compliance with the provisions of Minnesota Statutes, Section 505.03, Subd. 2.

City Council, City of Centerville, Minnesota

By Tom Wilharker Mayor
By Mara Johnson Clerk Administrator

County Surveyor

I hereby certify that in accordance with Minnesota Statutes, Section 505.021, Subd. 11, this plat has been reviewed and approved this 11th day of December, 2014.

Larry D. Holm by Charles F. Letzow, Deputy
Larry D. Holm
Anoka County Surveyor

County Auditor/Treasurer

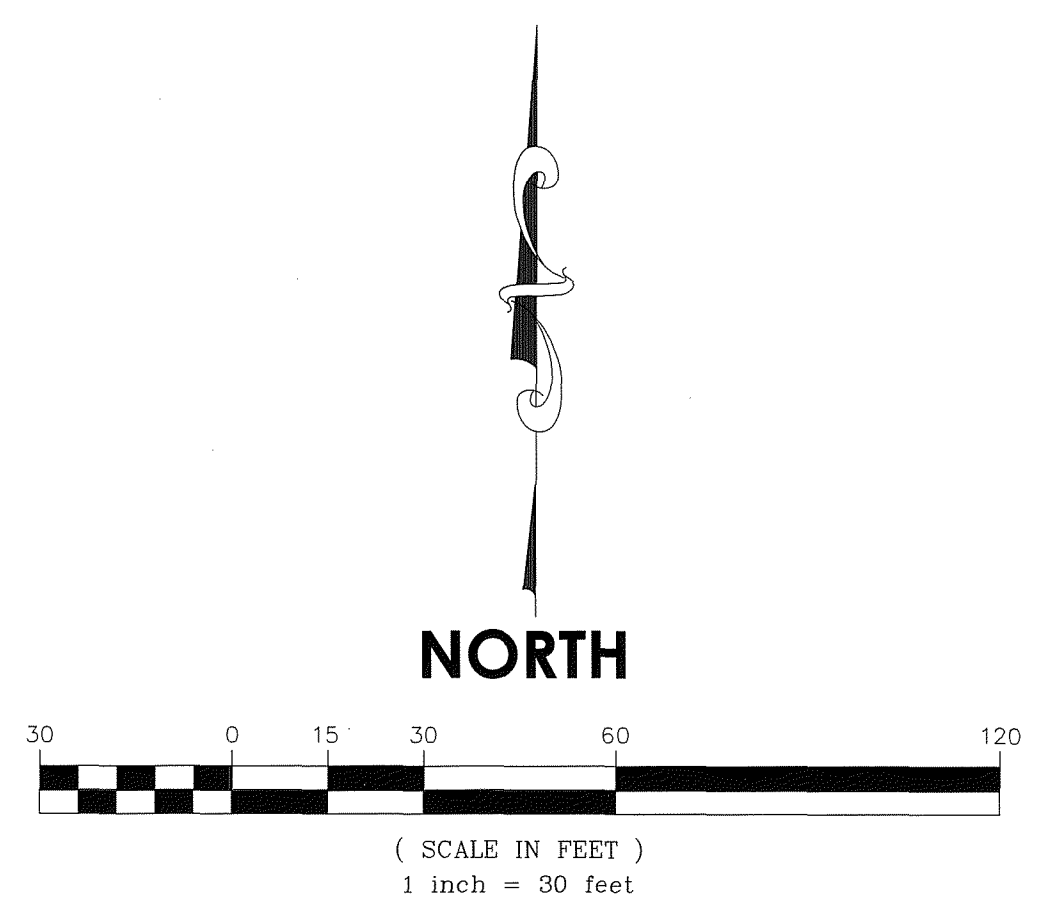
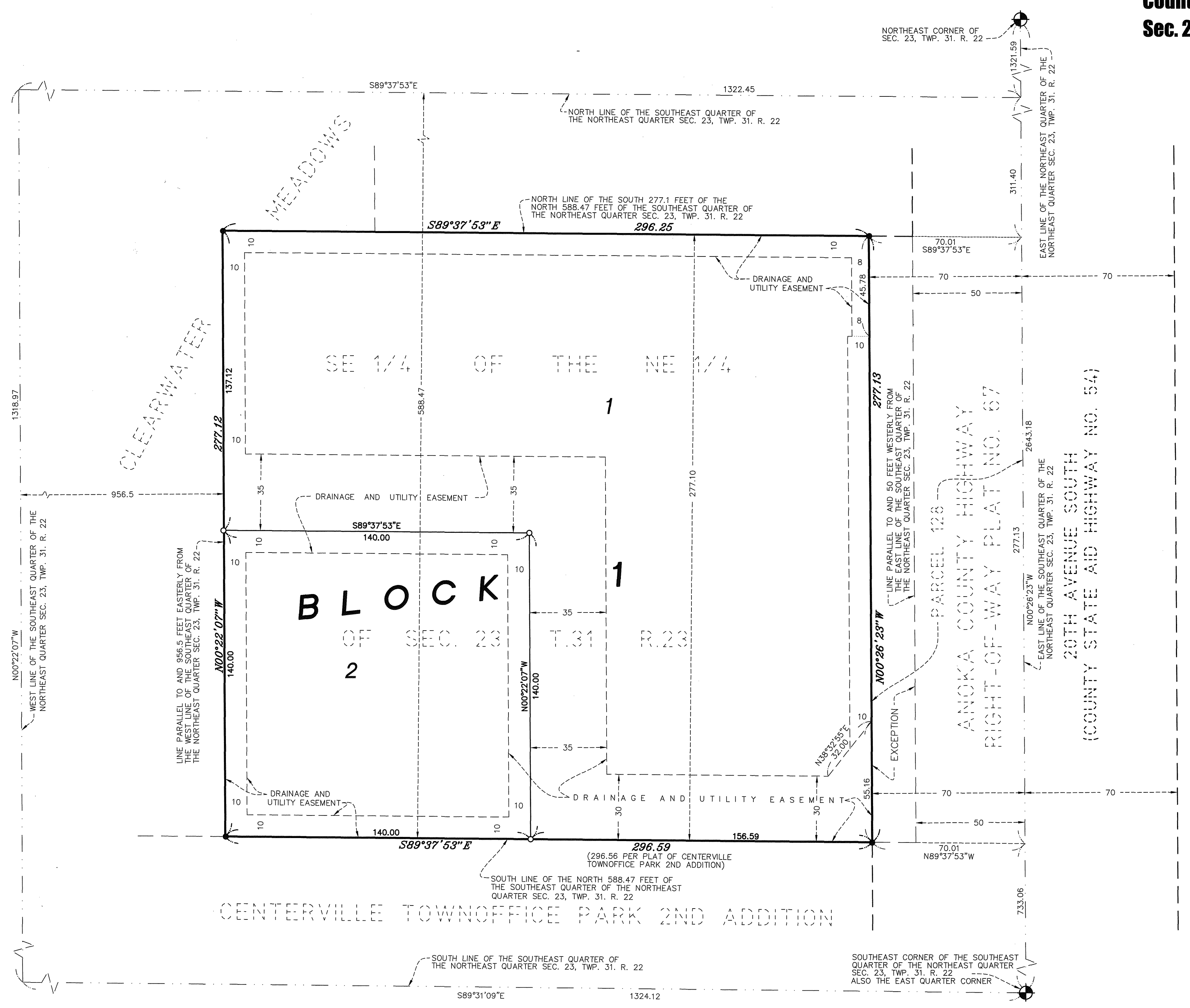
Pursuant to Minnesota Statutes, Section 505.021, Subd. 9, taxes payable in the year 2014 on the land hereinbefore described have been paid. Also, pursuant to Minnesota Statutes, Section 272.12, there are no delinquent taxes and transfer entered this 11th day of December, 2014.

Janell M. Sawyer
Property Tax Administrator
By Quity R. Carr Deputy

County Recorder/Registrar of Titles
County of Anoka, State of Minnesota

I hereby certify that this plat of TOWER ADDITION was filed in the office of the County Recorder/Registrar of Titles for public record on this 11th day of December, 2014 at 1:53 o'clock P.M. and was duly recorded in Book 77 Page 45 as Document Number 20916202-001 Abst

Janell M. Sawyer
County Recorder/Registrar of Titles
By Quity R. Carr Deputy



- DENOTES ANOKA COUNTY CAST IRON MONUMENT
- DENOTES 1/2 INCH BY 14 INCH IRON PIPE MARKED BY RLS NO. 41578.
- DENOTES FOUND IRON MONUMENT

FOR THE PURPOSES OF THIS PLAT THE EAST LINE OF THE SOUTHEAST QUARTER OF THE NORTHEAST QUARTER OF SECTION 23, TOWNSHIP 31, RANGE 22, IS ASSUMED TO HAVE A BEARING OF NORTH 00 DEGREES 26 MINUTES 23 SECONDS WEST.

E. G. RUD & SONS, INC.
EST. 1977
Professional Land Surveyors
\$56.00