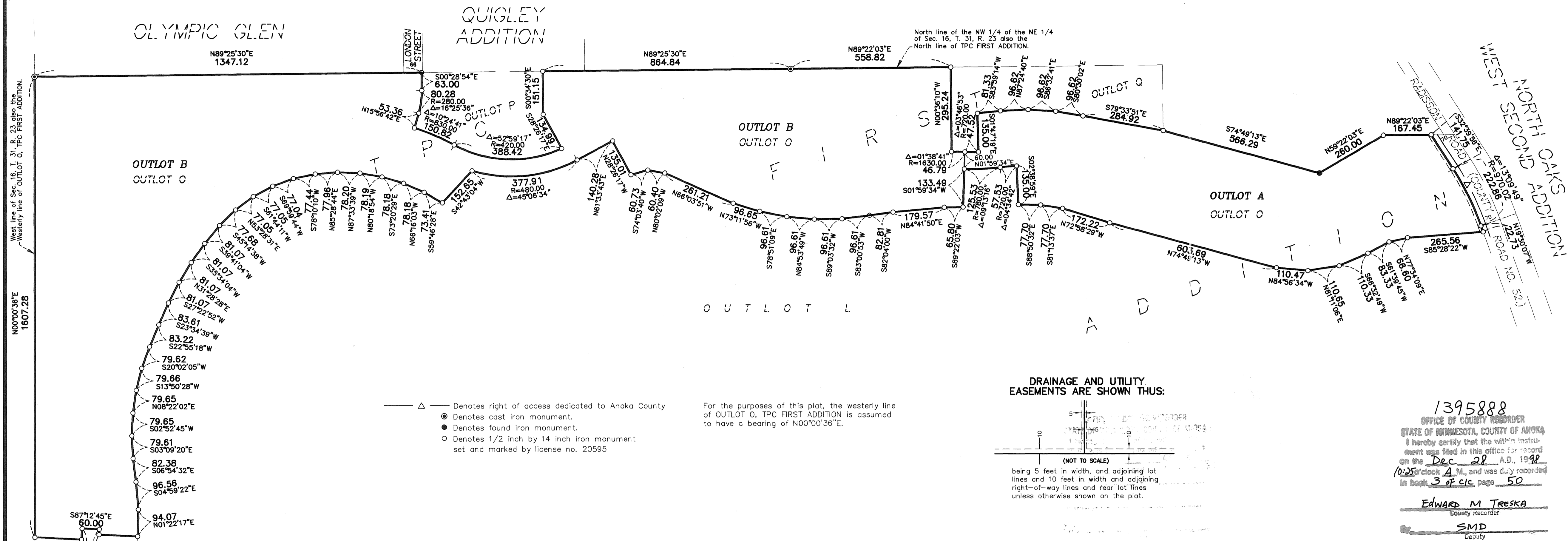
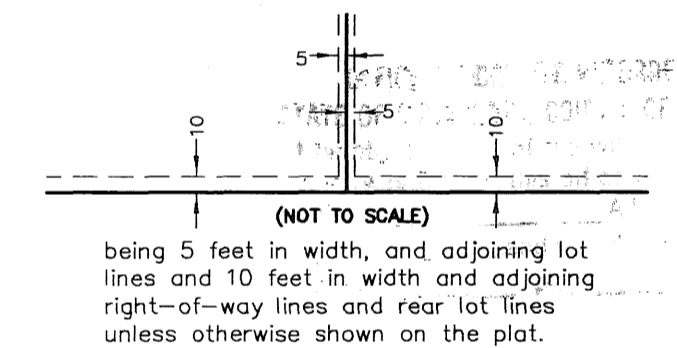


TPC NORTH

CITY OF BLAINE
COUNTY OF ANOKA



DRAINAGE AND UTILITY EASEMENTS ARE SHOWN THUS:



KNOW ALL MEN BY THESE PRESENTS: That Sienna Corporation, a Minnesota corporation, owner and proprietor, of the following described property situated in the County of Anoka, State of Minnesota, to wit:

Outlot O, TPC FIRST ADDITION, C.I.C. No. 49

Has caused the same to be surveyed and platted as TPC NORTH and does hereby donate and dedicate to the public for public use forever the easements for drainage and utility purposes only as shown on this plat. In witness whereof said Sienna Corporation, a Minnesota corporation, has caused these presents to be signed by its proper officer this 18th day of December 1998.

SIENNA CORPORATION
Catherine Mahonville
Catherine M. Thornhill as asst. treasurer

STATE OF MINNESOTA
COUNTY OF Hennepin

The foregoing instrument was acknowledged before me this 18th day of December, 1998 by Catherine M. Thornhill as asst. treasurer of Sienna Corporation, a Minnesota Corporation, on behalf of the corporation.

JAMES W. JOHNSTON
NOTARY PUBLIC - MINNESOTA
CARVER COUNTY
My Comm. Expires Jan. 31, 2000

[Signature]
Notary Public, Carver County, Minnesota
My Commission Expires January 31, 2000

I hereby certify that I have surveyed and platted the property described on this plat as TPC NORTH; that this plat is a correct representation of the survey; that all distances are correctly shown on the plat in feet and hundredths of a foot; that all monuments have been correctly placed in the ground as shown or will be placed as required by the local governmental unit; that the outside boundary lines are correctly designated on the plat; and that there are no wetlands, in accordance with M.S. 505.02 Subdivision 1, or public highways to be designated other than as shown.

Terrence E. Rothenbacher
Terrence E. Rothenbacher, Land Surveyor
Minnesota License Number 20595

STATE OF MINNESOTA
COUNTY OF Anoka

The foregoing instrument was acknowledged before me this 18th day of December, 1998, by Terrence E. Rothenbacher, Land Surveyor, Minnesota License No. 20595.

MICHELLE L. HOWLAND
NOTARY PUBLIC - MINNESOTA
My Commission Expires Jan. 31, 2000

Michelle L. Howland
Notary Public, Anoka County, Minnesota
My Commission Expires January 31, 2000

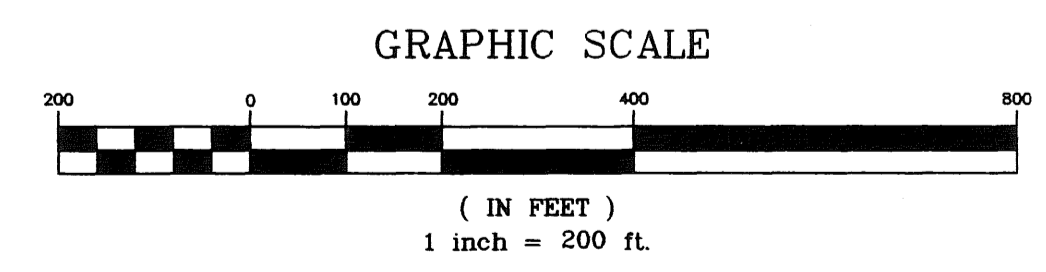
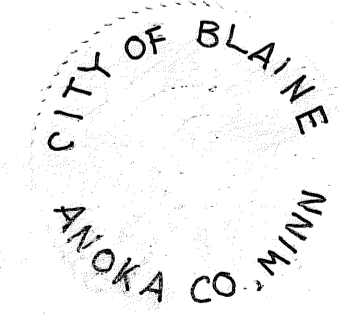
BLAINE, MINNESOTA

This plat of TPC NORTH was approved and accepted by the City Council of the City of Blaine, Minnesota, at a regular meeting thereof held this 3rd day of December, 1998. If applicable, the written comments and recommendations of the Commissioner of Transportation and the County Highway Engineer have been received by the City of the prescribed 30 day period has elapsed without receipt of such comments and recommendations, as provided by M.S. 305.03, Subdivision. 2.

By: *[Signature]* Mayor By: *[Signature]* Clerk

Checked and approved this 28th day of DECEMBER, 1998.

By: *[Signature]*
Anoka County Surveyor



1395888
OFFICE OF COUNTY RECORDER
STATE OF MINNESOTA, COUNTY OF ANOKA
I hereby certify that the within instrument was filed in this office for record on the Dec 28 A.D., 1998 at 10:35 o'clock A.M., and was duly recorded in Book 3 of c.c. page 50

Edward M. Treska
County Recorder
SMD
Deputy

I HEREBY CERTIFY THAT THE CURRENT AND DELINQUENT TAXES ON THE LANDS DESCRIBED WITHIN ARE PAID AND THE TRANSFER IS
Dec 28 1998
OFFICIAL COUNTY CLERK
J. Culver
DEPUTY PROPERTY TAX ADMINISTRATOR



2422 Enterprise Drive
Mendota Heights, MN 55120
(612) 681-1914 FAX: 681-9488

625 Highway 10 N.E.
Blaine, MN 55434
(612) 783-1880 FAX: 783-1883