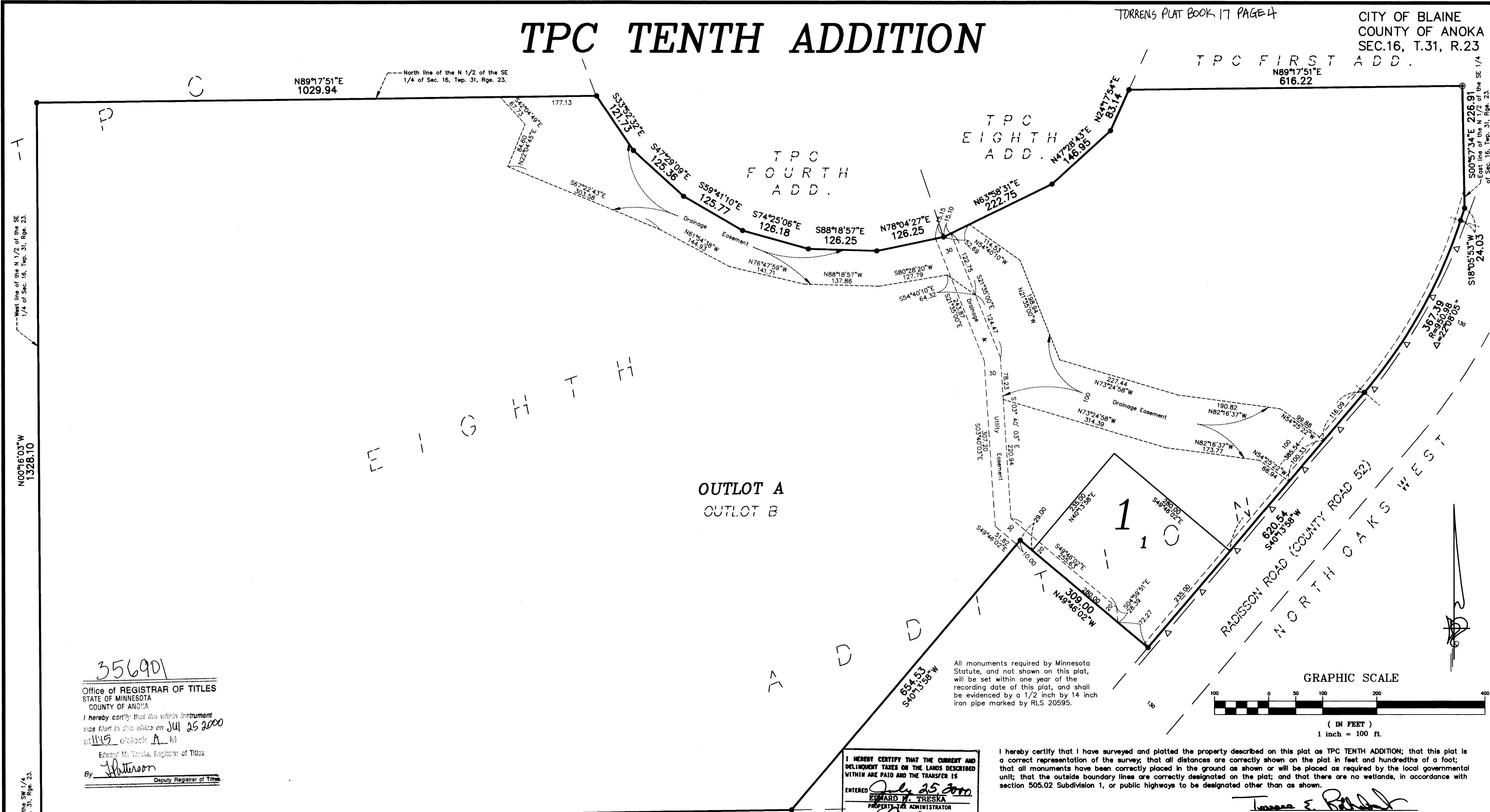


TPC TENTH ADDITION

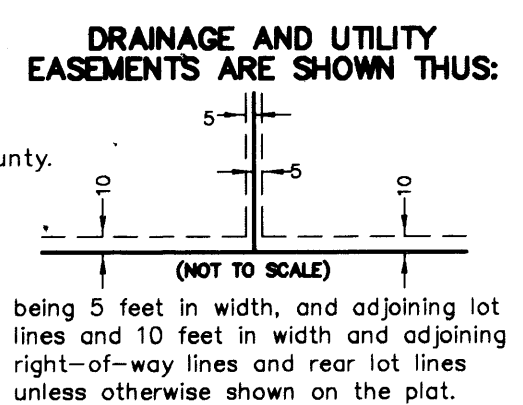


West line of the N 1/2 of the SE 1/4 of Sec. 16, Twp. 31, Rge. 23
N00°16'03"W 1328.10

East line of the SW 1/4, Sec. 16, Twp. 31, Rge. 23

356901
Office of REGISTRAR OF TITLES
STATE OF MINNESOTA
COUNTY OF ANOKA
I hereby certify that the within instrument was filed in this office on Jul 26 2000 at 11:45 o'clock A M
Edward M. Anoka, Registrar of Titles
By J. Peterson Deputy Registrar of Titles

△ Denotes right of access previously dedicated to Anoka County.
● Denotes Anoka County cast iron monument.
● Denotes found iron monument.
○ Denotes 1/2 inch by 14 inch iron monument set and marked by license no. 20595.
For the purposes of this plat, the east line of the SW1/4 of Sec. 16, T. 31, R. 23 is assumed to have a bearing of N00°16'03"W.



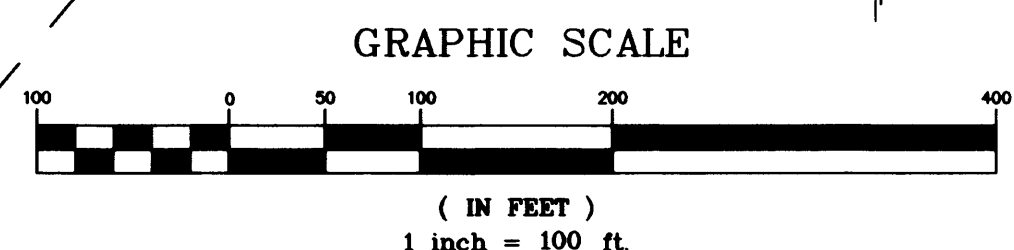
South line of the N 1/2 of the SE 1/4 of Sec. 16, Twp. 31, Rge. 23
1381.68
S89°15'21"W

TPC EAST

AMEN CORNER

I HEREBY CERTIFY THAT THE CURRENT AND DELINQUENT TAXES ON THE LANDS DESCRIBED WITHIN ARE PAID AND THE TRANSFER IS ENTERED
July 25 2000
Edward J. Treska
PROPERTY TAX ADMINISTRATOR
By S. Culver
DEPUTY PROPERTY TAX ADMINISTRATOR

I hereby certify that I have surveyed and platted the property described on this plat as TPC TENTH ADDITION; that this plat is a correct representation of the survey; that all distances are correctly shown on the plat in feet and hundredths of a foot; that all monuments have been correctly placed in the ground as shown or will be placed as required by the local governmental unit; that the outside boundary lines are correctly designated on the plat; and that there are no wetlands, in accordance with section 505.02 Subdivision 1, or public highways to be designated other than as shown.



KNOW ALL MEN BY THESE PRESENTS: That Tournament Players Club of the Twin Cities, LLC, a Minnesota limited liability company, owner and proprietor, of the following described property situated in the County of Anoka, State of Minnesota, to wit:
Outlot B, TPC EIGHTH ADDITION, Anoka County, Minnesota;
Has caused the same to be surveyed and platted as TPC TENTH ADDITION and does hereby donate and dedicate to the public for public use forever the easements for drainage and utility purposes only, in witness whereof said Tournament Players Club of the Twin Cities, LLC, a Minnesota limited liability company, has caused these presents to be signed by its proper officers this 12 day of July, 2000.

TOURNAMENT PLAYERS CLUB OF THE TWIN CITIES, LLC
Robert H. Enabak as Chief Mgr. Stephan M. Beckman as Mgr.

STATE OF MINNESOTA
COUNTY OF Anoka
The foregoing instrument was acknowledged before me this 12 day of July, 2000 by Robert H. Enabak and Stephan M. Beckman as Chief Mgr. and Mgr. respectively, of Tournament Players Club of the Twin Cities, LLC, a Minnesota limited liability company, on behalf of the limited liability company.

CHARLES L. RIDOLE
NOTARY PUBLIC - MINNESOTA
ANOKA COUNTY
My Commission Expires Jan 31, 2005

Charles L. Ridole
Notary Public, Anoka County, Minnesota
My Commission Expires January 31, 2005.

STATE OF MINNESOTA
COUNTY OF Anoka
The foregoing instrument was acknowledged before me this 19 day of November, 1999, by Terrence E. Rothenbacher, Land Surveyor, Minnesota License No. 20595.

MICHELLE L. HOWLAND
NOTARY PUBLIC - MINNESOTA
MY COMM. EXP. 01/31/2005

Michelle L. Howland
Notary Public, Anoka County, Minnesota
My Commission Expires January 31, 2000

BLAINE, MINNESOTA
This plat of TPC TENTH ADDITION was approved and accepted by the City Council of the City of Blaine, Minnesota, at a regular meeting thereof held this 12 day of December, 1999. If applicable, the written comments and recommendations of the Commissioner of Transportation and the County Highway Engineer have been received by the City or the prescribed 30 day period has elapsed without receipt of such comments and recommendations, as provided by Minnesota Statutes Section 505.03, Section 2.

By: Tom Hagan Mayor By: Joyce Twisted Clerk

Checked and approved this 25 day of JULY, 2000. By: Darryl D. ...
Anoka County Surveyor

PIONEER engineering
LAND SURVEYORS • CIVIL ENGINEERS
LAND PLANNERS • LANDSCAPE ARCHITECTS

2422 Enterprise Drive
Mendota Heights, MN 55120
(651) 681-1914 FAX: 681-9488
625 Highway 10 N.E.
Blaine, MN 55434
(612) 783-1880 FAX: 783-1883

Receipt # 2000057906 \$ 159.50