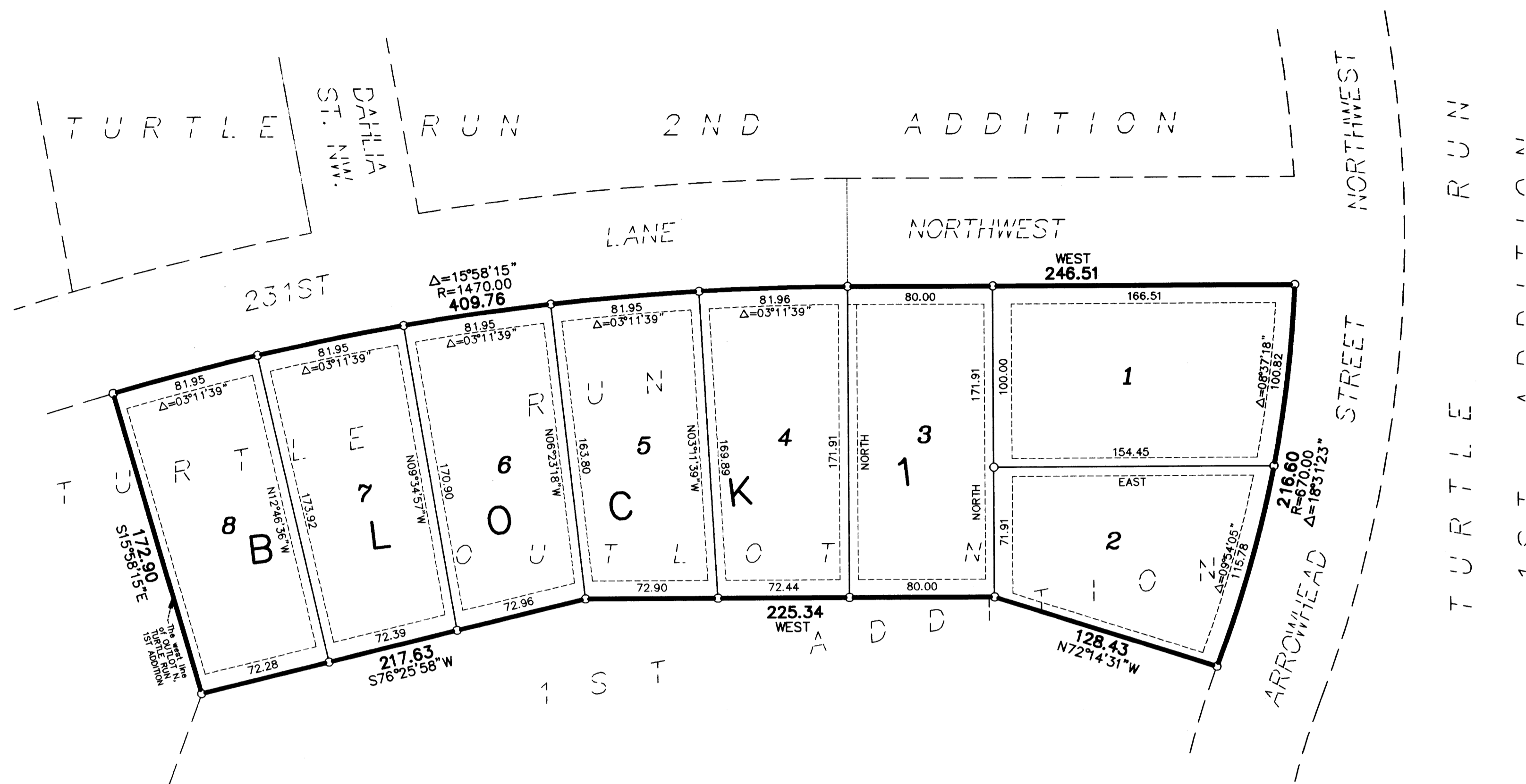
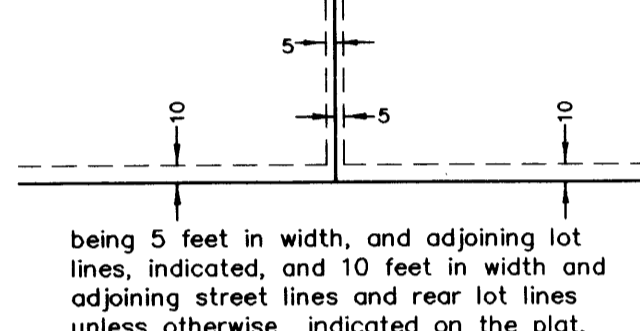


TURTLE RUN 4TH ADDITION



DRAINAGE AND UTILITY EASEMENTS ARE SHOWN THUS:



- Denotes iron monument found
- Denotes 1/2 inch by 14 inch iron monument set and marked with license number 20595

For the purposes of this plat, the west line of Outlot N, TURTLE RUN 1ST ADDITION has an assumed bearing of S15°58'15"E.

KNOW ALL MEN BY THESE PRESENTS: That Turtle Moon, Inc., a Minnesota Corporation owner and proprietor of the following described property situated in the County of Anoka, State of Minnesota, to wit:

Outlot N, TURTLE RUN 1ST ADDITION,

Has caused the same to be surveyed and platted as TURTLE RUN 4TH ADDITION and does hereby donate and dedicate to the public for public use forever the easements for drainage and utility purposes only. In witness whereof said Turtle Moon, Inc., a Minnesota Corporation, has caused these presents to be signed by its proper officer this 19th day of OCTOBER, 1999.

TURTLE MOON, INC.

 David G. Schulte, President

STATE OF MINNESOTA
COUNTY OF ANOKA

The foregoing instrument was acknowledged before me this 19th day of October, 1999 by, David G. Schulte, as president of Turtle Moon, Inc. a Minnesota Corporation, on behalf of the corporation

DEBORAH FERRIER
 Notary Public, Minnesota
 My Commission Expires JAN 31 2000

I hereby certify that I have surveyed and platted the property described on this plat as TURTLE RUN 4TH ADDITION, that this plat is a correct representation of the survey; that all distances are correctly shown on the plat in feet and hundredths of a foot; that all monuments have been correctly placed in the ground as shown or will be placed as required by the local governmental unit; that the outside boundary lines are correctly designated on the plat and that there are no wetlands as defined in MS 505.02, Subdivision 1, or public highways to be designated other than shown on the plat.

Terrence E. Rothenbacher, Land Surveyor
 Minnesota License Number 20595

STATE OF MINNESOTA
COUNTY OF Anoka

The foregoing Surveyor's Certificate was acknowledged before me this 19th day of October, 1999, by Terrence E. Rothenbacher, Land Surveyor, Minnesota License No. 20595.

MICHELLE L. HOWLAND
 Notary Public - Minnesota
 My Comm. Exp. 01/31/2005

Michelle L. Howland
 Notary Public, Anoka County, Minnesota
 My Commission Expires Jan 31, 2005

ST. FRANCIS, MINNESOTA

This plat of TURTLE RUN 4TH ADDITION was approved and accepted by the City Council of the City of St. Francis Minnesota, at a regular meeting thereof held this 17th day of September, 1999. If applicable, the written comments and recommendations of the Commissioner of Transportation and the County Highway Engineer have been received by the City or the prescribed 30 day period has elapsed without receipt of such comments and recommendations, as provided by Minnesota Statutes Section 505.03, Subdivision 2.

By:
Mayor

By:
Barbara J. Hall

Checked and approved this 20th day of OCTOBER, 1999.

By:
Larry D. Hie
Anoka County Surveyor

EDWARD M. TRUESDALE
 Notary Public - Minnesota
 My Commission Expires 10/31/99

1465107
 OFFICE OF COUNTY RECORDER
 STATE OF MINNESOTA, COUNTY OF ANOKA
 I hereby certify that the within instrument was filed in this office for record on the 25 October A.D., 1999 at 4:15 o'clock P.M., and was duly recorded on 58 Abs. page 4
 Edward M. Truesdale
 County Recorder
 By: RP
 Deputy

MICHELLE L. HOWLAND
 Notary Public - Minnesota
 My Commission Expires 01/31/2005

PIONEER engineering
 LAND SURVEYORS • CIVIL ENGINEERS
 LAND PLANNERS • LANDSCAPE ARCHITECTS

2422 Enterprise Drive
 Mendota Heights, MN 55120
 (651) 681-1914 FAX: 681-9488
 625 Highway 10 N.E.
 Blaine, MN 55434
 (612) 783-1880 FAX: 783-1883

Receipt No. 1999113115 \$335.00