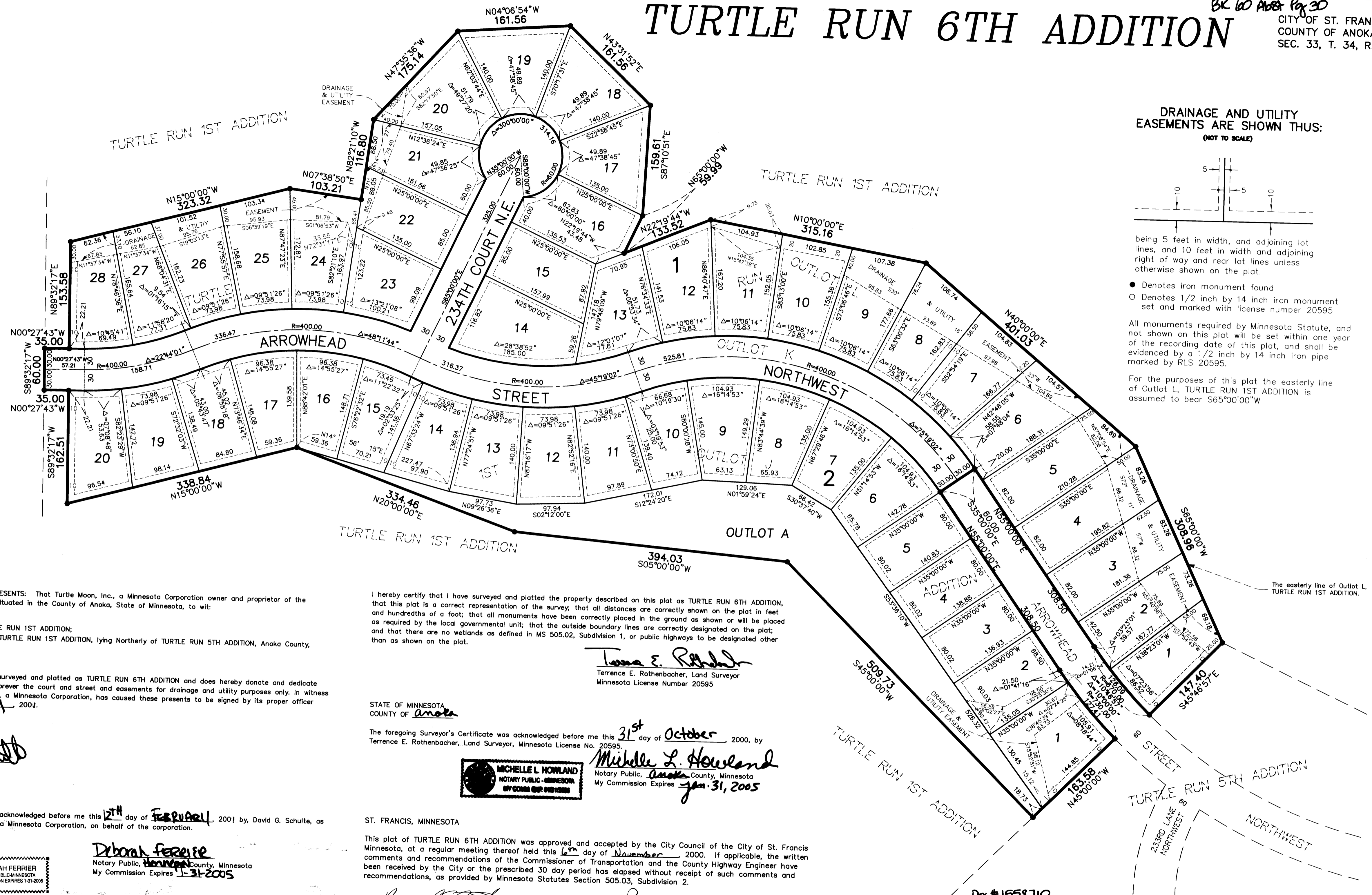
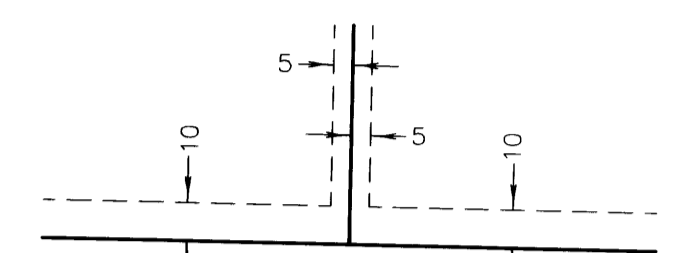


# TURTLE RUN 6TH ADDITION

BK 60 ADD Pgs 30  
CITY OF ST. FRANCIS  
COUNTY OF ANOKA  
SEC. 33, T. 34, R. 24



DRAINAGE AND UTILITY EASEMENTS ARE SHOWN THUS:  
(NOT TO SCALE)



being 5 feet in width, and adjoining lot lines, and 10 feet in width and adjoining right of way and rear lot lines unless otherwise shown on the plat.

- Denotes iron monument found
- Denotes 1/2 inch by 14 inch iron monument set and marked with license number 20595

All monuments required by Minnesota Statute, and not shown on this plat will be set within one year of the recording date of this plat, and shall be evidenced by a 1/2 inch by 14 inch iron pipe marked by RLS 20595.

For the purposes of this plat the easterly line of Outlot L, TURTLE RUN 1ST ADDITION is assumed to bear S65°00'00"W

KNOW ALL MEN BY THESE PRESENTS: That Turtle Moon, Inc., a Minnesota Corporation owner and proprietor of the following described property situated in the County of Anoka, State of Minnesota, to wit:

Outlots J and L, TURTLE RUN 1ST ADDITION; That part of Outlot K, TURTLE RUN 1ST ADDITION, lying Northerly of TURTLE RUN 5TH ADDITION, Anoka County, Minnesota.

Has caused the same to be surveyed and platted as TURTLE RUN 6TH ADDITION and does hereby donate and dedicate to the public for public use forever the court and street and easements for drainage and utility purposes only. In witness whereof said Turtle Moon, Inc., a Minnesota Corporation, has caused these presents to be signed by its proper officer this 12th day of February, 2001.

TURTLE MOON, INC.  
*David G. Schulte*  
David G. Schulte, as President

STATE OF MINNESOTA  
COUNTY OF ANOKA  
The foregoing instrument was acknowledged before me this 12th day of February, 2001 by David G. Schulte, as President of Turtle Moon, Inc. a Minnesota Corporation, on behalf of the corporation.

DEBORAH FERRIER  
NOTARY PUBLIC - MINNESOTA  
MY COMMISSION EXPIRES 12/31/2005

Deborah Ferrer  
Notary Public, Anoka County, Minnesota  
My Commission Expires 12-31-2005

I hereby certify that I have surveyed and platted the property described on this plat as TURTLE RUN 6TH ADDITION, that this plat is a correct representation of the survey; that all distances are correctly shown on the plat in feet and hundredths of a foot; that all monuments have been correctly placed in the ground as shown or will be placed as required by the local governmental unit; that the outside boundary lines are correctly designated on the plat; and that there are no wetlands as defined in MS 505.02, Subdivision 1, or public highways to be designated other than as shown on the plat.

*Terrence E. Rothenbacher*  
Terrence E. Rothenbacher, Land Surveyor  
Minnesota License Number 20595

STATE OF MINNESOTA  
COUNTY OF ANOKA

The foregoing Surveyor's Certificate was acknowledged before me this 31st day of October, 2000, by Terrence E. Rothenbacher, Land Surveyor, Minnesota License No. 20595.

MICHELLE L. HOWLAND  
NOTARY PUBLIC - MINNESOTA  
MY COMMISSION EXPIRES 01/31/2005

*Michelle L. Howland*  
Notary Public, Anoka County, Minnesota  
My Commission Expires Jan. 31, 2005

ST. FRANCIS, MINNESOTA

This plat of TURTLE RUN 6TH ADDITION was approved and accepted by the City Council of the City of St. Francis, Minnesota, at a regular meeting thereof held this 6th day of November, 2000. If applicable, the written comments and recommendations of the Commissioner of Transportation and the County Highway Engineer have been received by the City or the prescribed 30 day period has elapsed without receipt of such comments and recommendations, as provided by Minnesota Statutes Section 505.03, Subdivision 2.

By: *Richard Skold* Mayor  
By: *Barbara J. Nell* Clerk

Checked and approved this 30th day of March, 2001

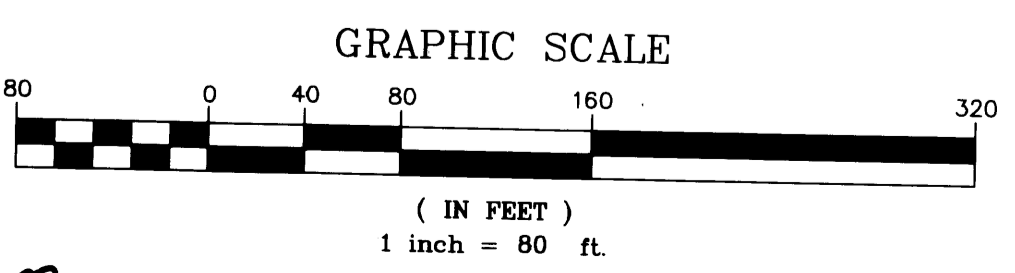
By: *Carly D. Hovind* Deputy  
Anoka County Surveyor

2422 Enterprise Drive  
Mendota Heights, MN 55120  
(651) 681-1914 FAX: 681-9488  
625 Highway 10 N.E.  
Blaine, MN 55434  
(763) 783-1880 FAX: 783-1883

PIONEER engineering  
LAND SURVEYORS • CIVIL ENGINEERS  
LAND PLANNERS • LANDSCAPE ARCHITECTS

I HEREBY CERTIFY THAT THE CURRENT AND DELINQUENT TAXES ON THE LANDS DESCRIBED WITHIN ARE PAID AND THE TRANSFER IS ENTERED  
Mar 30 2001  
MAUREEN J. DEVINE  
COUNTY RECORDER  
BY: *S. Culver*  
DEPUTY PROPERTY TAX ADMINISTRATOR

Doc # 1558710  
OFFICE OF COUNTY RECORDER  
STATE OF MINNESOTA, COUNTY OF ANOKA  
I hereby certify that the within instrument was filed in this office for record on the 20th March, A.D., 2001 at 2:30 o'clock P.M., and was duly recorded in book 60 Add page 30  
Maureen J. Devine  
County Recorder



By: KLO  
REC # 8001085051 \$1565.00