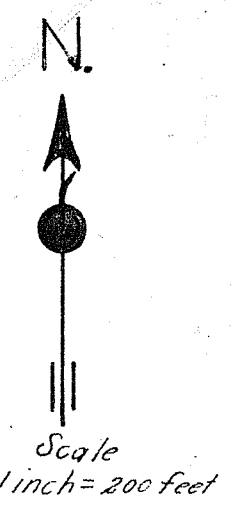
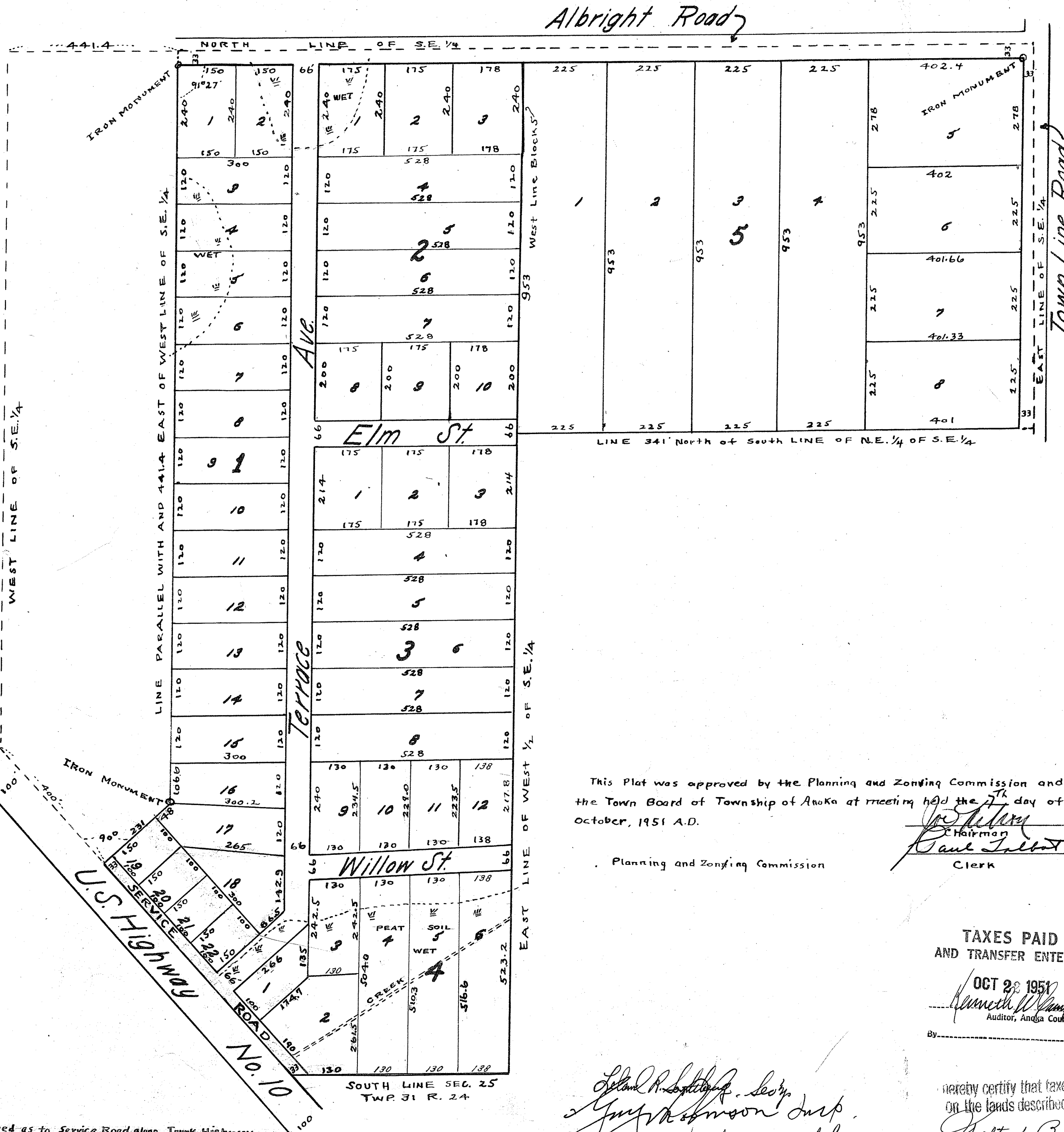


TWIN CITY TERRACE

141619

OFFICE OF REGISTER OF DEEDS,
STATE OF MINNESOTA, COUNTY OF ANOKA } ss
I hereby certify that the instrument was filed in this office on record on the day of OCT 25 1951 A. D. 1951 at 3:15 P. M., and was duly recorded in book 78 of Plats page 13
Estelle Rimmer
Register of Deeds



Know All Men By These presents: That We, R.W. Ripberger, Incorporated, a Minnesota Corporation, owners and proprietors of the following described property, situate in the County of Anoka, State of Minnesota, to-wit: That part of the Southeast quarter of Section Twenty-five (25), Township Thirty-one (31), Range Twenty-four (24) as follows: From the point of intersection of Northerly line of United States Highway Number Ten (10) and the West line of said Southeast quarter (S.E. 1/4), thence Southeasterly along said Northerly line four-hundred (400) feet to actual place of beginning, thence Northeasterly and at right angles to said Northerly line to an intersection with a line made parallel to the West line of the said Southeast quarter (S.E. 1/4) and 444.4 feet East therefrom, thence North and parallel to the West line of said Southeast quarter (S.E. 1/4) to the North line of said Southeast quarter (S.E. 1/4), thence East on North line of said Southeast quarter (S.E. 1/4) to the Northeast corner thereof, thence South on the East line of said Southeast quarter (S.E. 1/4) to a point distant 341 feet North from the Southeast corner of the Northeast quarter of Southeast quarter (N.E. 1/4 of S.E. 1/4) thence West and parallel with the South line of said Northeast quarter of Southeast quarter (N.E. 1/4 of S.E. 1/4) to the West line thereof, thence South on the East line of the West half of Southeast quarter (W. 1/2 of S.E. 1/4) to the Southeast corner thereof, thence West on the South line of said Section Twenty-five (25) to the Northerly line of said United States Highway Number Ten (10) thence Northwesterly along said Northerly line to place of beginning: have caused the same to be surveyed and platted as "Twin City Terrace" and do hereby donate and dedicate to the public use forever the roads as shown on the annexed plat.

In Witness Whereof We have hereunto set our hands and seals this 25th day of October, 1951 A.D.

In Presence of
Betty B. Agnes
Frances E. Wicks

Signed
W.H. Ripberger
President
R.W. Ripberger
Secretary-Treasurer
R.W. Ripberger, Incorporated

State of Minnesota } ss.
County of Anoka } ss.
On this 25th day of October, 1951 A.D. before me, a Notary Public within and for said County personally appeared W.H. Ripberger and R.W. Ripberger to me personally known, who being by me each duly sworn did say that they are respectively President and Secretary-Treasurer of R.W. Ripberger, Incorporated the Corporation named in foregoing instrument, that the seal affixed is the corporate seal of said corporation and the said instrument was signed and sealed in behalf of said Corporation by authority of its board of directors and said W.H. Ripberger and R.W. Ripberger acknowledged said instrument to be the free act and deed of said Corporation.

Frances E. Wicks
Notary Public, Anoka County, Minn.
My Commission Expires Feb. 8, 1957.

State of Minnesota } ss.
County of Anoka } ss.
I hereby certify that I have surveyed and platted the property described in this plat as "Twin City Terrace"; that this plat is a true representation of said survey; that the outside boundary lines are correctly designated; that all distances are correctly shown in feet and decimals of a foot; that the monuments for the guidance of future surveys have been correctly placed in the ground as shown on the plat; that the topography of the land is correctly shown and that there are no wet lands or public roads other than as shown thereon.

Wayne L. Ridge
County Surveyor

Above certificate subscribed and sworn to before me this 25th day of October, 1951 A.D.

O.M. Holm
O. M. HOLM
Notary Public, Anoka County, Minn.
My Commission Expires May 10, 1958.

This plat was approved and accepted by the Honorable Board of County Commissioners of the County of Anoka, Minnesota, at a meeting held this 25th day of October, 1951.

Robert J. Johnson
Chairman
Samuel H. Campbell
County Auditor

This Plat was approved by the Planning and Zoning Commission and the Town Board of Township of Anoka at meeting held the 7th day of October, 1951 A.D.
Paul Lambert
Chairman
Paul Lambert
Clerk
Planning and Zoning Commission

TAXES PAID AND TRANSFER ENTERED
OCT 22 1951
Kenneth W. Campbell
Auditor, Anoka County
By _____ Deputy

I hereby certify that taxes for the year 1950 on the lands described within are paid
Charles J. Brown
County Treasurer

Approved as to Service Road along Trunk Highway
E. A. V. ...
G. E. ...

Stuart ...
John ...
Stewart V. ...

This plat was approved as to form and execution on this 16th day of October, 1951
Robert J. Johnson
County Attorney