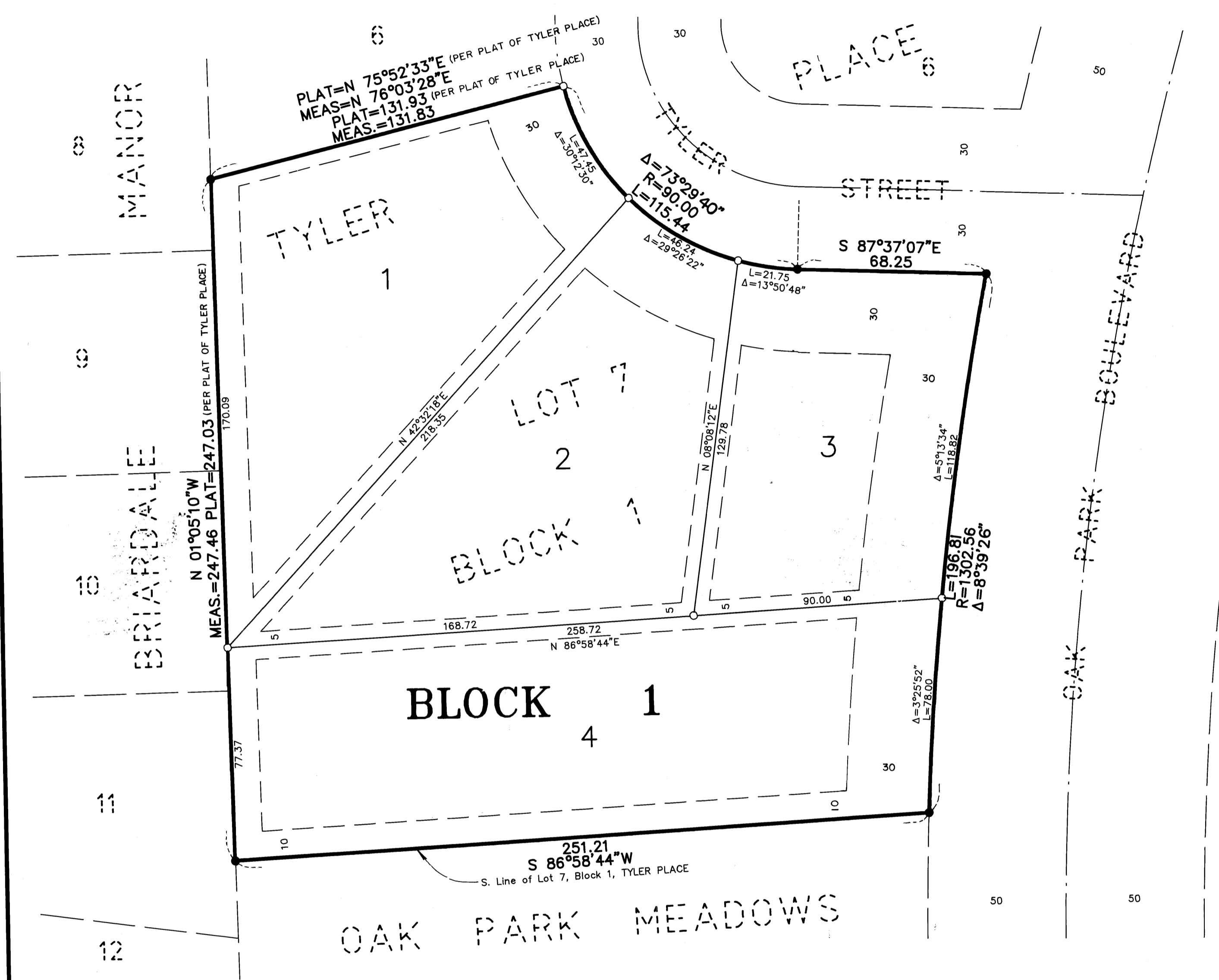


OFFICIAL PLAT

# TYLER PLACE 2ND ADDITION

CITY OF BLAINE  
COUNTY OF ANOKA



KNOW ALL PERSONS BY THESE PRESENTS: That North Suburban Development, Inc., a Minnesota Corporation, owner and proprietor, and Del T. Hassan, single, mortgagee of the following described property situated in the County of Anoka, State of Minnesota, to-wit:

Lot 7, Block 1, TYLER PLACE, according to the recorded plat thereof, Anoka County, Minnesota.

Has caused the same to be surveyed and platted as TYLER PLACE 2ND ADDITION and do hereby dedicate the drainage and/or utility easements as shown on the plat. In witness whereof said North Suburban Development, Inc. has caused these presents to be signed by its proper officer this 7th day of April, 1993. Also in witness whereof said Del T. Hassan has hereunto set his hand this 5th day of April, 1993.

NORTH SUBURBAN DEVELOPMENT, INC.

*[Signature]*  
J. A. Menkveld, as President

SIGNED:

*[Signature]*  
Del T. Hassan

STATE OF MINNESOTA) The foregoing instrument was acknowledged before me this 7th day of April, 1993,  
COUNTY OF ANOKA) by J. A. Menkveld, as President of North Suburban Development, Inc., a Minnesota corporation, on behalf of the corporation.

*[Notary Seal]*  
SHIRLEY D. CHENOWETH  
NOTARY PUBLIC-MINNESOTA  
ANOKA COUNTY  
My Commission Expires 6-25-96

*[Signature]*  
Notary Public, Anoka County, Minnesota  
My Commission expires June 24, 1996

STATE OF MINNESOTA)  
COUNTY OF ANOKA)

The foregoing instrument was acknowledged before me this 5th day of April, 1993, by Del T. Hassan, single.

*[Notary Seal]*  
MOLLY W. CAINE  
NOTARY PUBLIC-MINNESOTA  
ANOKA COUNTY  
My Commission Expires Mar. 5, 1996

*[Signature]*  
Notary Public, Anoka County, Minnesota  
My Commission expires 3-5-96

I hereby certify that I have surveyed and platted the land described in the dedication on this plat as TYLER PLACE 2ND ADDITION; that the plat is a correct representation of said survey; that all distances are correctly shown on said plat in feet and hundredths of a foot; that the monuments have been correctly placed in the ground as shown; that the outside boundaries are correctly designated on said plat; and that there are no wet lands or public highways to be designated on said plat other than as shown thereon.

*[Signature]*  
Jeffrey N. Caine, Registered Land Surveyor  
Minnesota Registration No. 12251

STATE OF MINNESOTA)  
COUNTY OF ANOKA)

The surveys certificate was acknowledged before me a Notary Public, this 1st day of April, 1993, by Jeffrey N. Caine, Land Surveyor.

*[Notary Seal]*  
MOLLY W. CAINE  
Notary Public, Minnesota  
Anoka County  
My Commission Expires 6-13-96  
CITY OF BLAINE

*[Signature]*  
Notary Public, Anoka County, Minnesota  
My Commission expires 6-13-96

We hereby certify that the City Council of the City of Blaine, Anoka County, Minnesota, duly accepted and approved the plat of TYLER PLACE 2ND ADDITION at a regular meeting held this 9th day of December, 1991. If applicable, the written comments and recommendations of the Commissioner of Transportation and the County Highway Engineer have been received by the city or the prescribed 30 day period has elapsed without receipt of such comments and recommendations, as provided by Minn. Statutes, Section 505.03, Subd. 2.

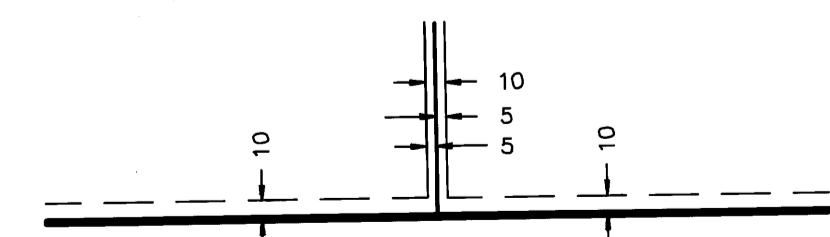
By *[Signature]* Mayor By *[Signature]* City Manager

This plat has been checked and approved this 7th day of April, 1993.

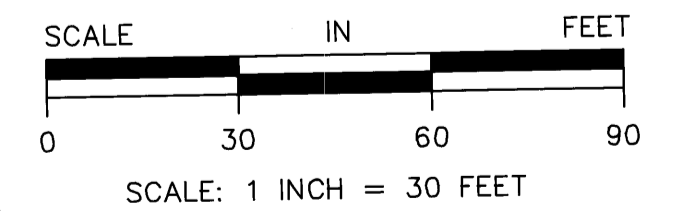
By *[Signature]*  
Anoka County Surveyor



DRAINAGE AND UTILITY EASEMENTS SHOWN THUS:



BEING 10 FEET WIDE AND ADJOINING ALL STREET RIGHT-OF-WAY LINES AND REAR LOT LINES AND 5 FEET WIDE AND ADJOINING ALL SIDE LOT LINES, UNLESS OTHERWISE SHOWN ON THE PLAT.



○ DENOTES 1/2 INCH IRON PIPE SET.  
● DENOTES IRON MONUMENT FOUND.  
NOTE: FOR THE PURPOSES OF THIS PLAT, THE SOUTH LINE OF LOT 7 BLOCK 1, TYLER PLACE, ANOKA COUNTY, MINNESOTA, IS ASSUMED TO BEAR S 86°58'44\"/>

232942  
Office of REGISTRAR OF TITLES  
STATE OF MINNESOTA  
COUNTY OF ANOKA  
I hereby certify that the within instrument was filed in this office on the 7th day of April, A.D. 1993 at 4:45 o'clock P. M.  
By *[Signature]*  
DEPUTY REGISTRAR OF TITLES

I HEREBY CERTIFY THAT THE CURRENT AND DELINQUENT TAXES ON THE LANDS DESCRIBED WITHIN ARE PAID AND THE TRANSFER IS ENTERED  
April 7 1993  
EDWARD M. TRESKA  
PROPERTY TAX ADMINISTRATOR  
By *[Signature]*  
DEPUTY PROPERTY TAX ADMINISTRATOR

CAINE & ASSOCIATES  
LAND SURVEYORS, INC.