

UNITY 2ND ADDITION

CITY OF FRIDLEY
COUNTY OF ANOKA
SEC. 11, TWP. 30, RGE. 24
Book 22 TORNS Page 48

KNOW ALL PERSONS BY THESE PRESENTS: That North Suburban Hospital District, a Minnesota municipal corporation and political subdivision, owner of the following described property:

Lot 3, Block 1, UNITY ADDITION, according to the recorded plat thereof, Anoka County, Minnesota.

Has caused the same to be surveyed and platted as UNITY 2ND ADDITION.

In witness whereof said North Suburban Hospital District, a Minnesota municipal corporation and political subdivision, has caused these presents to be signed by its proper officers this 21st day of FEBRUARY, 2017.

NORTH SUBURBAN HOSPITAL DISTRICT

Gerald R. Maelckberg
Gerald R. Maelckberg, Chairperson

Janice M. Shear
Janice M. Shear, Secretary

STATE OF Minnesota

COUNTY OF Anoka

This instrument was acknowledged before me on February 23, 2017 by Gerald R. Maelckberg, Chairperson of North Suburban Hospital District, a Minnesota municipal corporation and political subdivision, on behalf of the corporation.

Scott M. Lopez
Scott M. Lopez
Notary Public, Anoka County, MN
My commission expires January 31, 2020

STATE OF Minnesota

COUNTY OF Anoka

This instrument was acknowledged before me on FEBRUARY 21, 2017 by Janice M. Shear, Secretary of North Suburban Hospital District, a Minnesota municipal corporation and political subdivision, on behalf of the corporation.

Scott M. Lopez
Scott M. Lopez
Notary Public, Anoka County, MN
My commission expires January 31, 2020

I, Thomas R. Balluff do hereby certify that this plat was prepared by me or under my direct supervision; that I am a duly Licensed Land Surveyor in the State of Minnesota; that this plat is a correct representation of the boundary survey; that all mathematical data and labels are correctly designated on this plat; that all monuments depicted on this plat have been, or will be correctly set within one year; that all water boundaries and wet lands, as defined in Minnesota Statutes, Section 505.01, Subd. 3, as of the date of this certificate are shown and labeled on this plat; and all public ways are shown and labeled on this plat.

Dated this 17th day of FEBRUARY, 2017.

Thomas R. Balluff
Thomas R. Balluff, Licensed Land Surveyor
Minnesota License No. 40361

STATE OF Minnesota

COUNTY OF Anoka

This instrument was acknowledged before me on February 17, 2017 by Thomas R. Balluff.

Cynthia J. Morical
Cynthia J. Morical
Notary Public, Hennepin County, MN
My commission expires January 31, 2020

CITY COUNCIL, CITY OF FRIDLEY, MINNESOTA

This plat of UNITY 2ND ADDITION was approved and accepted by the City Council of the City of Fridley, Minnesota at a regular meeting thereof held this 13th day of March, 2017, and said plat is in compliance with the provisions of Minnesota Statutes, Section 505.03, Subd. 2.

CITY COUNCIL, CITY OF FRIDLEY, MINNESOTA

By: Scott J. Lund Mayor By: De A. Abrego Clerk

COUNTY SURVEYOR

I hereby certify that in accordance with Minnesota Statutes, Section 505.021, Subd. 11, this plat has been reviewed and approved this 17th day of March, 2017.

By: Larry D. Hoium by Charles F. Ritzgen, Deputy
Larry D. Hoium
Anoka County Surveyor

COUNTY AUDITOR/TREASURER

Pursuant to Minnesota Statutes, Section 505.021, Subd. 9, taxes payable in the year 2017, on the land hereinbefore described have been paid. Also, pursuant to Minnesota Statutes, Section 272.12, there are no delinquent taxes and transfer entered this 17th day of March, 2017.

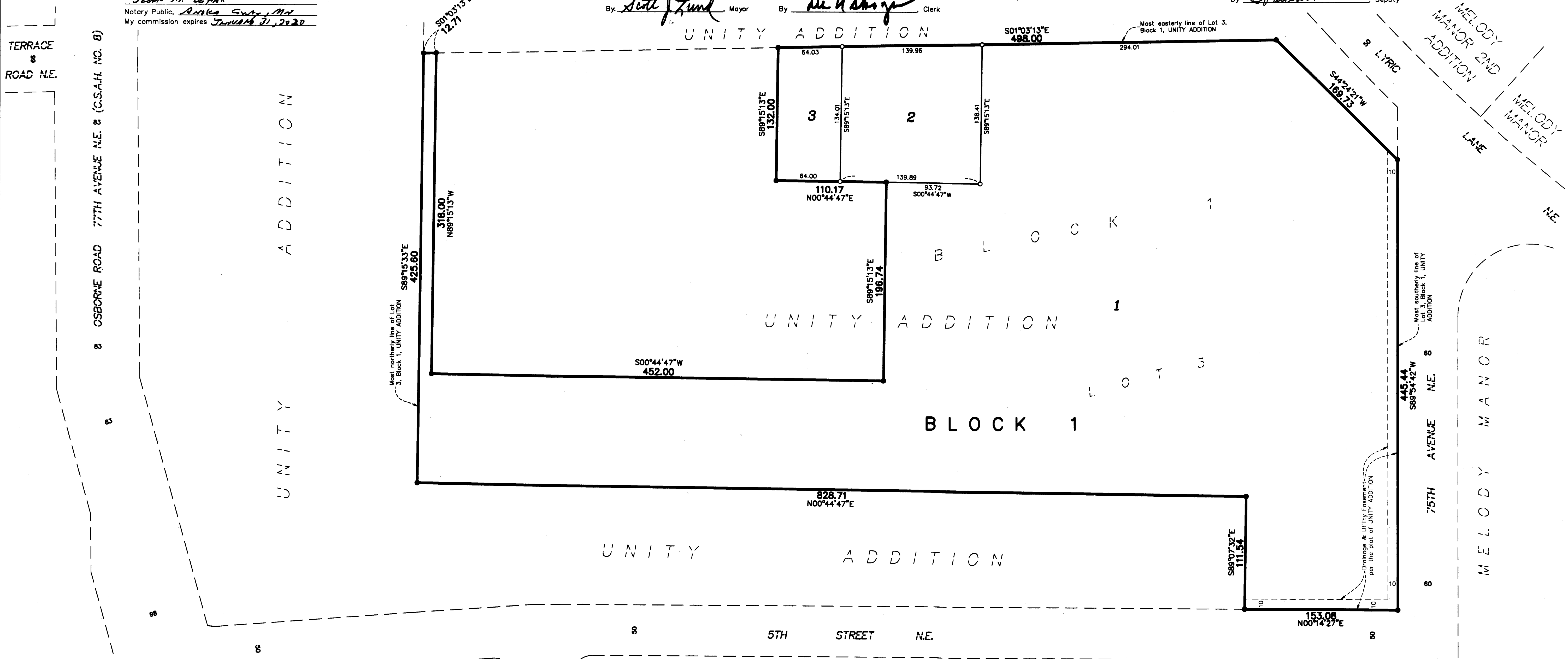
Donell M. Sawyer
Property Tax Administrator
By: J. Peterson Deputy

COUNTY RECORDER/REGISTRAR OF TITLES

County of Anoka, State of Minnesota

I hereby certify that this plat of UNITY 2ND ADDITION was filed in the office of the County Recorder/Registrar of Titles for public record on this 17th day of March, 2017, at 12:45 o'clock P.M. and was duly recorded in Book 22 TORNS Page 48 as Document Number 546905.001

Donell M. Sawyer
County Recorder/Registrar of Titles
By: J. Peterson Deputy



TERRACE ROAD N.E.

OSBORNE ROAD 77TH AVENUE N.E. & (C.S.A.H. NO. 8)

UNITY ADDITION

UNITY ADDITION

UNITY ADDITION

BLOCK 1

UNITY ADDITION

5TH STREET N.E.

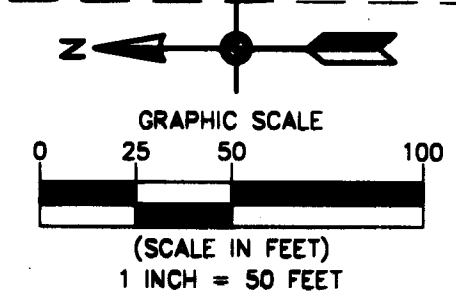
OSBORNE MANOR

MELODY MANOR 2ND ADDITION

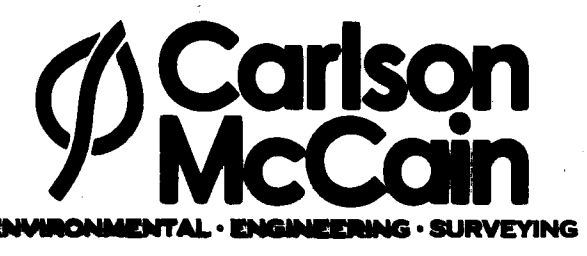
MELODY MANOR LANE

OSBORNE MANOR

76TH AVENUE N.E.



- Denotes Found Iron Monument unless otherwise noted
- Denotes 1/2 inch by 14 inch iron monument set or to be set within one year of recording of this plat and marked with license number 40361



\$5600