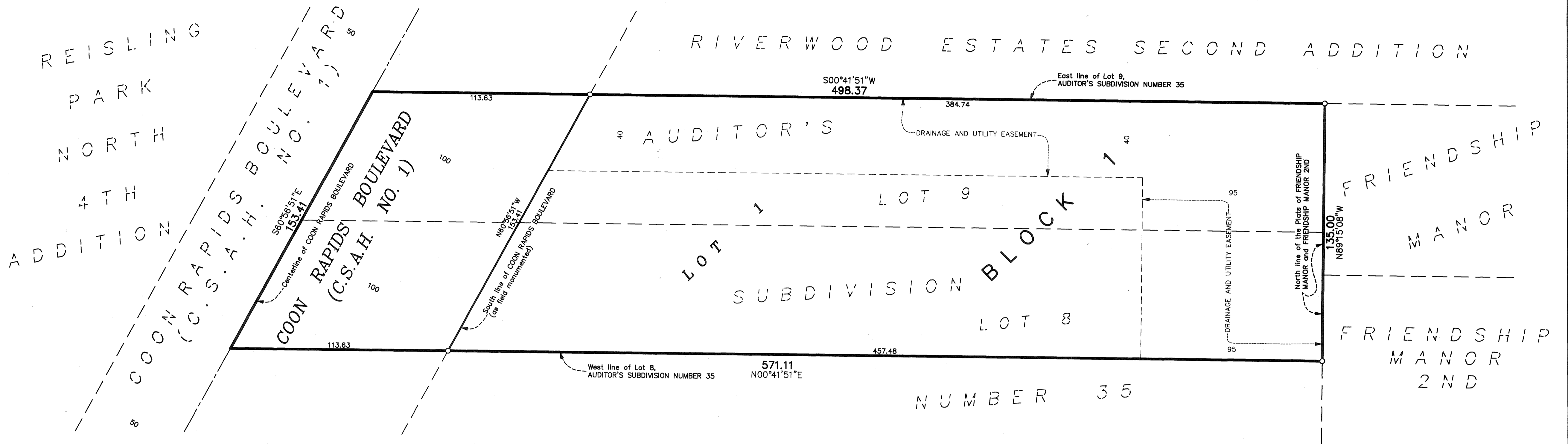


VALENCIA COACH HOMES

Book 20 of Toms Pg 49

CITY OF COON RAPIDS
COUNTY OF ANOKA
SEC. 17, TWP. 31, RGE. 24



KNOW ALL MEN BY THESE PRESENTS: That Contractors Capital Corporation, a Minnesota corporation, fee owner of the following described property situated in the County of Anoka, State of Minnesota, to wit:

That part of Lots 8 and 9, AUDITOR'S SUBDIVISION NUMBER 35, lying North of the plats of FRIENDSHIP MANOR and FRIENDSHIP MANOR 2ND.

Has caused the same to be surveyed and platted as VALENCIA COACH HOMES and does hereby donate and dedicate to the public for public use forever the boulevard and the easements for drainage and utility purposes only. In witness whereof said Contractors Capital Corporation, a Minnesota corporation, has caused these presents to be signed by its proper officer this 23rd day of May, 2007.

CONTRACTORS CAPITAL CORPORATION

Patricia A. Filip
Patricia A. Filip as President

STATE OF MINNESOTA
COUNTY OF Dakota

The foregoing instrument was acknowledged before me this 23rd day of May, 2007, by Patricia A. Filip, as President of said Contractors Capital Corporation, a Minnesota corporation, on behalf of said corporation.

Paula Kathryn Johnson
Notary Public, Minnesota
My Commission Expires Jan 31, 2010

Paula Kathryn Johnson
Notary Public, Dakota County, Minnesota
My Commission Expires 01/31/10

I hereby certify that I have surveyed and platted the property described on this plat as VALENCIA COACH HOMES; that this plat is a correct representation of the survey; that all distances are correctly shown on this plat in feet and hundredths of a foot; that all monuments have been correctly placed in the ground as shown or will be placed as required by the local governmental unit; that the outside boundary lines are correctly designated on the plat; and that there are no wet lands, in accordance with section 505.02 Subdivision 1, or public highways to be designated other than as shown.

Terrence E. Rothenbacher
Terrence E. Rothenbacher, Land Surveyor
Minnesota License Number 20595

STATE OF MINNESOTA
COUNTY OF Anoka

The foregoing instrument was acknowledged before me this 15th day of May, 2007, by Terrence E. Rothenbacher, Land Surveyor, Minnesota License No. 20595.

Christopher E. Sharp
NOTARY PUBLIC
MY COMM. EXP. 01/31/2010

Clifton E. Ship
Notary Public, Anoka County, Minnesota
My Commission Expires 01/31/10

COON RAPIDS, MINNESOTA

This plat of VALENCIA COACH HOMES was approved and accepted by the City Council of the City of Coon Rapids, Minnesota, at a regular meeting thereof held this 18 day of January, 2005. If applicable, the written comments and recommendations of the Commissioner of Transportation and the County Highway Engineer have been received by the City or the prescribed 30 day period has elapsed without receipt of such comments and recommendations, as provided by Minnesota Statutes Section 505.03, Section 2.

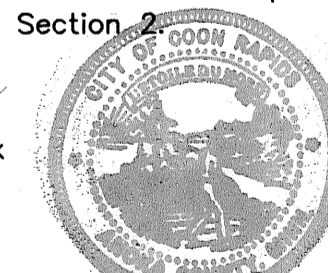
By J. Han, Mayor
By Jon R. Anderson, Clerk

This plat was approved by the Planning Commission of the City of Coon Rapids, Minnesota, at a meeting held this 21 day of October, 2004.

By Donna M. Name
Chairman

Checked and approved this 18th day of JUNE, 2007.

By Larry D. [Signature]
Anoka County Surveyor



49 23 24.002 Toms.

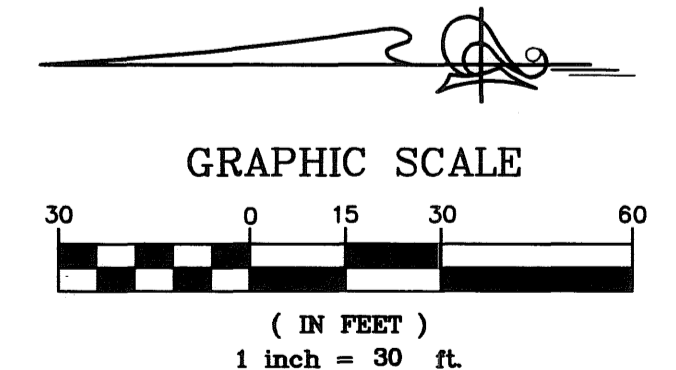
Office of REGISTRAR OF TITLES
STATE OF MINNESOTA
COUNTY OF ANOKA
I hereby certify that the within instrument was filed in this office on 7-27-07 at 3:31 o'clock P.M.
Maureen J. Devine, Registrar of Titles
By MAJ

I HEREBY CERTIFY THAT THE CURRENT AND DELINQUENT TAXES ON THE LANDS DESCRIBED WITHIN ARE PAID AND THE TRANSFER IS ENTERED 7-27-07
MAUREEN J. DEVINE
PROPERTY TAX ADMINISTRATOR
BY [Signature]
DEPUTY PROPERTY TAX ADMINISTRATOR

All monuments required by Minnesota Statute, whether shown on this plat or not, will be set within one year of the recording date of this plat, and shall be evidenced by a 1/2 inch by 14 inch iron pipe marked by RLS 20595.

o Denotes 1/2 inch by 14 inch iron monument set and marked with license number 20595.

For the purposes of this plat, the east line of Lot 9, AUDITOR'S SUBDIVISION NUMBER 35, is assumed to have a bearing of South 00 degrees 41 minutes 51 seconds West.



\$56.00

PIONEERengineering
CIVIL ENGINEERS LAND PLANNERS LAND SURVEYORS LANDSCAPE ARCHITECTS