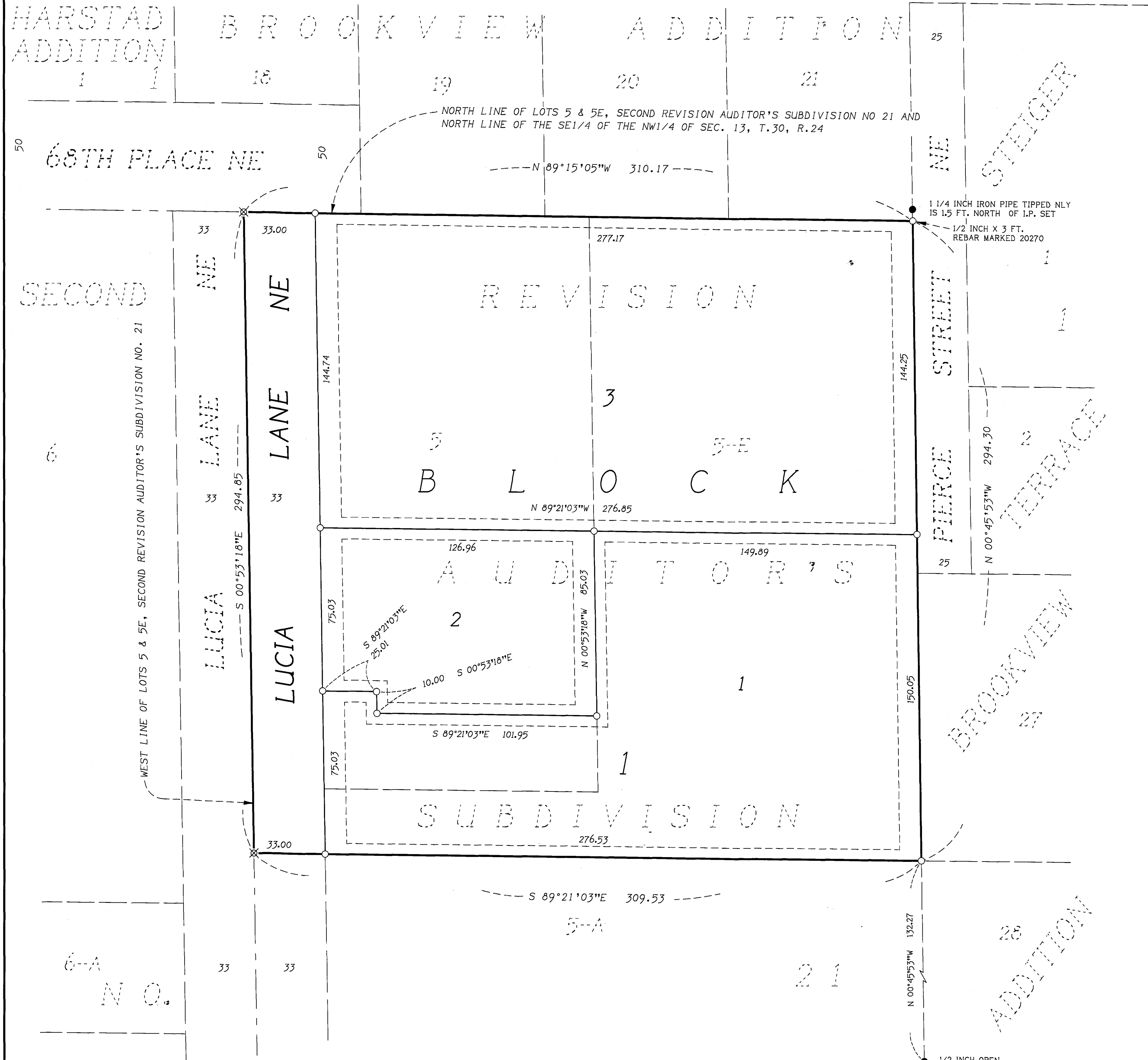


# VALLEY ADDITION

CITY OF FRIDLEY  
COUNTY OF ANOKA  
SEC. 13, T.30, R.24



KNOW ALL PERSONS BY THESE PRESENTS: That Cornerstone Private Asset Trust Company, LLC, a South Dakota limited liability company, as Custodian FBO Gary Valley, owner of the following described property:

Lots 5 and 5E, SECOND REVISION AUDITOR'S SUBDIVISION NO. 21, Anoka County, Minnesota

Has caused the same to be surveyed and platted as VALLEY ADDITION and does hereby dedicate to the public for public use the public way and drainage and utility easements as created by this plat.

In witness whereof said Cornerstone Private Asset Trust Company, LLC, a South Dakota limited liability company, as Custodian FBO Gary Valley, has caused these presents to be signed by its proper officer this 20 day of July, 2018.

Signed: Cornerstone Private Asset Company, LLC as Custodian FBO Gary Valley

*[Signature]*  
Chad Haber, President for Cornerstone Private Asset Trust Company, LLC

STATE OF Minnesota  
COUNTY OF Hennepin

This instrument was acknowledged before me this 20th day of July, 2018 by Chad M. Haber, President of Cornerstone Private Asset Company, LLC, a South Dakota limited liability company, as Custodian FBO Gary Valley.

Signed: *[Signature]*  
Printed: Kristine Iken

Notary Public, Minnesota County, Hennepin  
My Commission expires 1/31/2021

I Randy L. Kurth do hereby certify that this plat was prepared by me or under my direct supervision; that I am a duly Licensed Land Surveyor in the State of Minnesota; that this plat is a correct representation of the boundary survey; that all mathematical data and labels are correctly designated on this plat; that all monuments depicted on this plat have been, or will be correctly set within one year; that all water boundaries and wet lands, as defined in Minnesota Statutes, Section 505.01, Subd. 3, as of the date of this certificate are shown and labeled on this plat; and all public ways are shown and labeled on this plat.

Dated this 19th day of July, 2018.

*[Signature]*  
Randy L. Kurth, Licensed Land Surveyor  
Minnesota License No. 20270

STATE OF MINNESOTA  
COUNTY OF Anoka

This instrument was acknowledged before me this 19th day of July, 2018 by Randy L. Kurth.

Signed: *[Signature]*  
Printed: Ronald Steiner

Notary Public, Anoka County, Minnesota  
My Commission Expires 1-31-2020

CITY COUNCIL, CITY OF FRIDLEY, MINNESOTA

This plat of VALLEY ADDITION was approved and accepted by the City Council of the City of Fridley, Minnesota at a regular meeting thereof held this 23rd day of July, 2018, and said plat is in compliance with the provisions of Minnesota Statutes, Section 505.03, Subd. 2.

City Council, City of Fridley, Minnesota  
Mayor: *[Signature]* Clerk: *[Signature]*

COUNTY SURVEYOR

I hereby certify that in accordance with Minnesota Statutes, Section 505.021, Subd. 11, this plat has been reviewed and approved this 20th day of July, 2018.

*[Signature]*  
Charles F. Gitzel, Anoka County Surveyor

COUNTY AUDITOR/TREASURER

Pursuant to Minnesota Statutes, Section 505.021, Subd. 9, taxes payable in the year 2018 on the land hereinbefore described have been paid. Also, pursuant to Minnesota Statutes, Section 272.12, there are no delinquent taxes and transfer entered this 9th day of August, 2018.

*[Signature]*  
Jonell M. Sawyer, Property Tax Administrator

By: *[Signature]*, Deputy

COUNTY RECORDER/REGISTRAR OF TITLES  
COUNTY OF ANOKA, STATE OF MINNESOTA

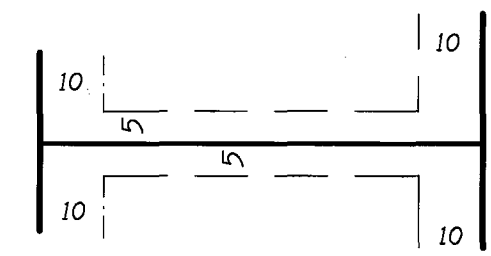
I hereby certify that this plat of VALLEY ADDITION was filed in the office of the County Recorder/Registrar of Titles for public record on this 9th day of August, 2018, at 1:10 o'clock P.M. and was duly recorded as Document Number 558158.002.

*[Signature]*  
Jonell M. Sawyer, County Recorder/Registrar of Titles

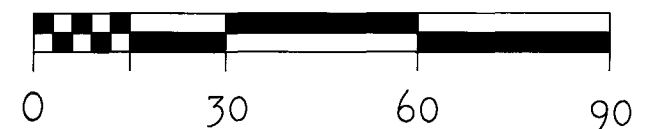
By: *[Signature]*, Deputy

For the purposes of this plat, the northerly line of Lots 5 & 5E, SECOND REVISION AUDITOR'S SUBDIVISION NO. 21 is assumed to bear  $N 89^{\circ}15'05''W$ .

Drainage & Utility Easements shown on lot lines, being 5 feet in width each side of the side lot lines and 10 feet in width and adjacent to the street and rear lot lines are to be dedicated on this plat and are shown thus:



Graphic Scale in Feet



Scale: 1 Inch = 30 Feet

- Denotes 1/2 inch by 14 inch iron pipe monument set and capped LLS 20270, unless otherwise shown.
- Denotes iron pipe monument found and marked as shown.
- ⊗ Denotes M.A.G. nail set in bituminous