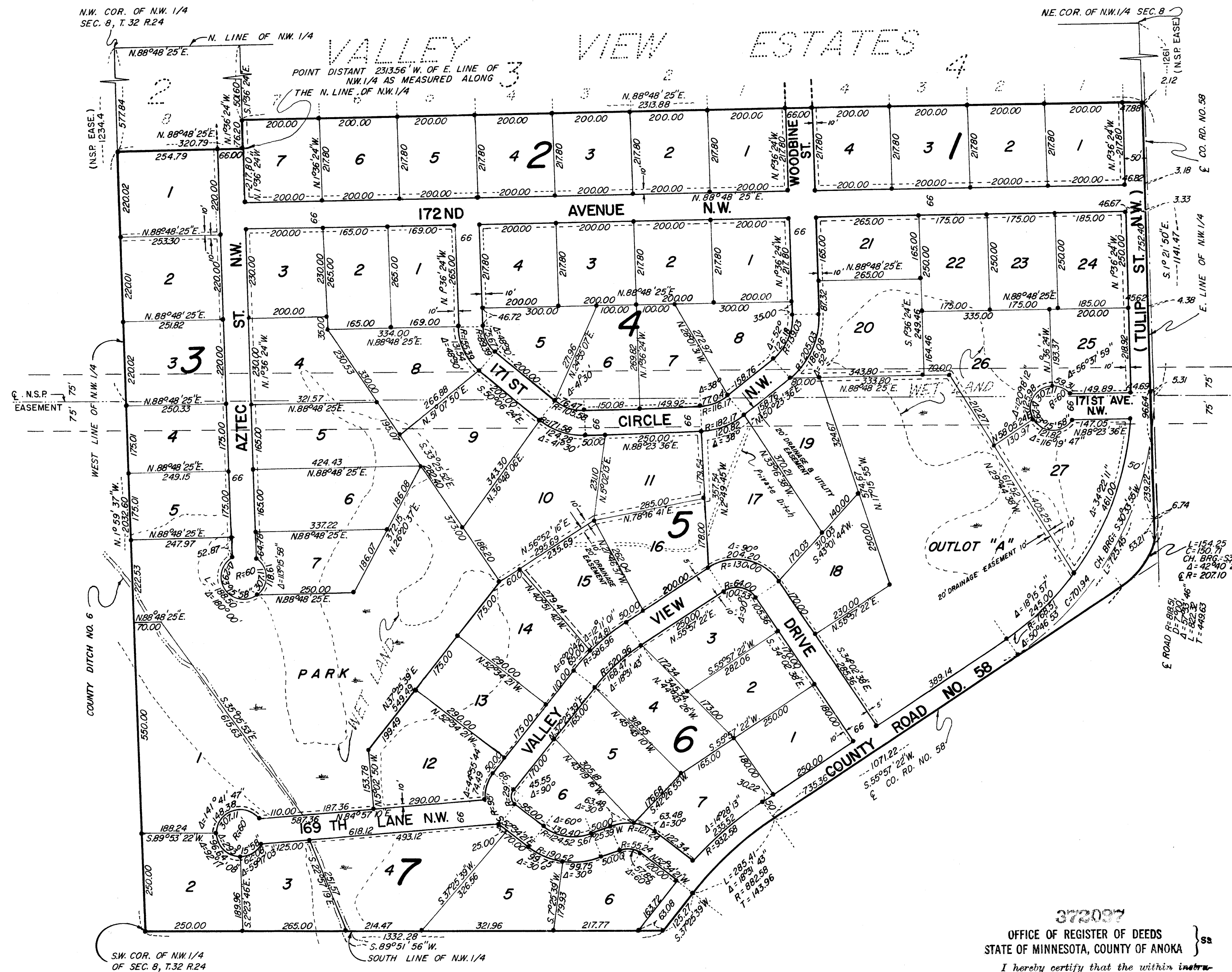


# VALLEY VIEW ESTATES 2<sup>ND</sup> ADDITION

TOWNSHIP OF GROW ANOKA COUNTY, MINNESOTA



Know all men by these presents that Raymond LEE Klenk and Karen M. Klenk, his wife, owners and proprietors of the following described property situated in the County of Anoka, State of Minnesota, to-wit: That part of the NW<sup>1</sup>/<sub>4</sub> of Section 8, Township 32, Range 2h described as follows: Beginning at the Southwest corner of said NW<sup>1</sup>/<sub>4</sub>; thence Northerly on the West line thereof to a point distant 577.84 feet South of the Northwest corner of said NW<sup>1</sup>/<sub>4</sub>; thence North 88°18'25" East (assumed bearing) and parallel with the North line of said NW<sup>1</sup>/<sub>4</sub> to a point which is 2,313.56 feet West of the East line of said NW<sup>1</sup>/<sub>4</sub>; as measured along the North line of said NW<sup>1</sup>/<sub>4</sub>; thence North 1°36'12" East to a point which is 501.60 feet South of the North line of said NW<sup>1</sup>/<sub>4</sub>; as measured on a bearing of South 1°36'12" East; thence Easterly and parallel with the North line of said NW<sup>1</sup>/<sub>4</sub> and to the East line of said NW<sup>1</sup>/<sub>4</sub>; thence South 1°21'50" East on the East line of said NW<sup>1</sup>/<sub>4</sub> a distance of 1111.47 feet to its intersection with the center line of County Road No. 58 as it is now laid out and travelled; thence Southwesterly along said center line on a curve to the right having a radius of 207.10 feet and a central angle of 42°10'28" a distance of 151.25 feet, the chord to said curve bearing South 31°37'108" West for a distance of 150.71 feet; thence South 55°57'22" West on said center line a distance of 1071.22 feet; thence Southwesterly along said center line on a curve to the left having a radius of 882.58 feet for a distance of 285.11 feet; thence South 37°25'139" West on said center line a distance of 125.27 feet to its intersection with the South line of said NW<sup>1</sup>/<sub>4</sub>; thence Westerly on said South line to the point of beginning; have caused the same to be surveyed and platted as VALLEY VIEW ESTATES, 2nd ADDITION and do hereby donate and dedicate to the public for public use forever the Streets, Avenues, Circle, Lane, Drive, County Road, Park and utility and drainage easements as shown on the annexed plat and also dedicating to the County of Anoka the right of access to County Road No. 58 from Lot 1, Block 1, Lots 2h, 25, and 27, Block 5, Lots 1 and 7, Block 6 and Lot 6, Block 7 as shown on the plat; subject to an easement to Northern States Power Company as described in Document No. 31377h as recorded in the office of the Register of Deeds in Anoka County, Minnesota. In witness whereof said Raymond LEE Klenk and Karen M. Klenk, his wife, have hereunto set their hands and seals this 12 day of June, 1972 A.D.

In the presence of:

Lemire Daily Witness  
Fred Daily Witness  
Raymond LEE Klenk Raymond LEE Klenk  
Karen M. Klenk Karen M. Klenk

STATE OF MINNESOTA ) (SS  
COUNTY OF MILLE LACS )  
On this 12 day of June, 1972 A.D. before me, a notary public, within and for said County and State, personally appeared Raymond LEE Klenk and Karen M. Klenk, his wife, to me personally known to be the persons described in and who executed the foregoing instrument; and they affirm and acknowledge that they executed the same as their own free act and deed.

D. W. Teigen  
Notary Public, Millesacs County, Minnesota  
My commission expires 1-22-77

STATE OF MINNESOTA ) (SS  
COUNTY OF ANOKA )  
I do hereby certify that I have surveyed and platted the property described in the dedication of this plat as VALLEY VIEW ESTATES 2nd ADDITION, that this plat is a correct representation of said survey; that all distances are correctly shown on said plat in feet and nearest hundredth of a foot; that all monuments have been correctly placed in the ground as shown on the plat; that the outside boundary lines are correctly designated on the plat; and there are no wet lands or public highways to be designated on said plat other than shown thereon.

Surveyor LeRoy H. Winner  
Minnesota Registration No. 4987

STATE OF MINNESOTA ) (SS  
COUNTY OF MILLE LACS )  
Above certificate subscribed and sworn to before me, a Notary Public within and for said County and State on this 12 day of June, 1972 A.D.

D. W. Teigen  
Notary Public, Millesacs County, Minnesota  
My commission expires 1-22-77

The annexed plat of VALLEY VIEW ESTATES, 2nd ADDITION, was approved by the Town Board of the Township of Grow at a regular meeting held this 13 day of June, 1972 A.D.

Richard J. Schneider  
Chairman of Town Board  
Marie L. West  
Clerk of Town Board

Recommended for approval this 20th day of June, 1972, A.D.

G. J. Lundheim  
County Highway Engineer, Anoka County, Minnesota

This plat was approved as to form and execution on this 18th day of July, 1972 A.D.

Robert Johnson  
County Attorney, Anoka County, Minnesota

This plat was checked and approved on this 20th day of June, 1972 A.D.

Robert W. Anderson  
County Surveyor, Anoka County, Minnesota

This plat was approved and accepted by the Board of County Commissioners of the County of Anoka, State of Minnesota, at a regular meeting held this 20th day of June, 1972 A.D.

Edward A. Kordisch  
Chairman

Charles R. Lefebvre  
County Auditor

Lynda E. Lage  
Deputy

372007  
OFFICE OF REGISTER OF DEEDS  
STATE OF MINNESOTA, COUNTY OF ANOKA ) (SS

I hereby certify that the within instruments was filed in this office for record on the 21 day of JULY, 1972 A.D., 196... at 2 o'clock P.M., and was duly recorded in book 2 of Plate page 16.

Fred J. Conradi  
By Margaret K. Muel  
Deputy

"NO DELINQUENT TAXES AND TRANSFER ENTERED"

July 31 1972  
Charles R. Lefebvre  
Auditor, Anoka County

BY Nancy C. Casper  
Deputy

LEROY H. WINNER & ASSOC., INC. - LAND SURVEYORS