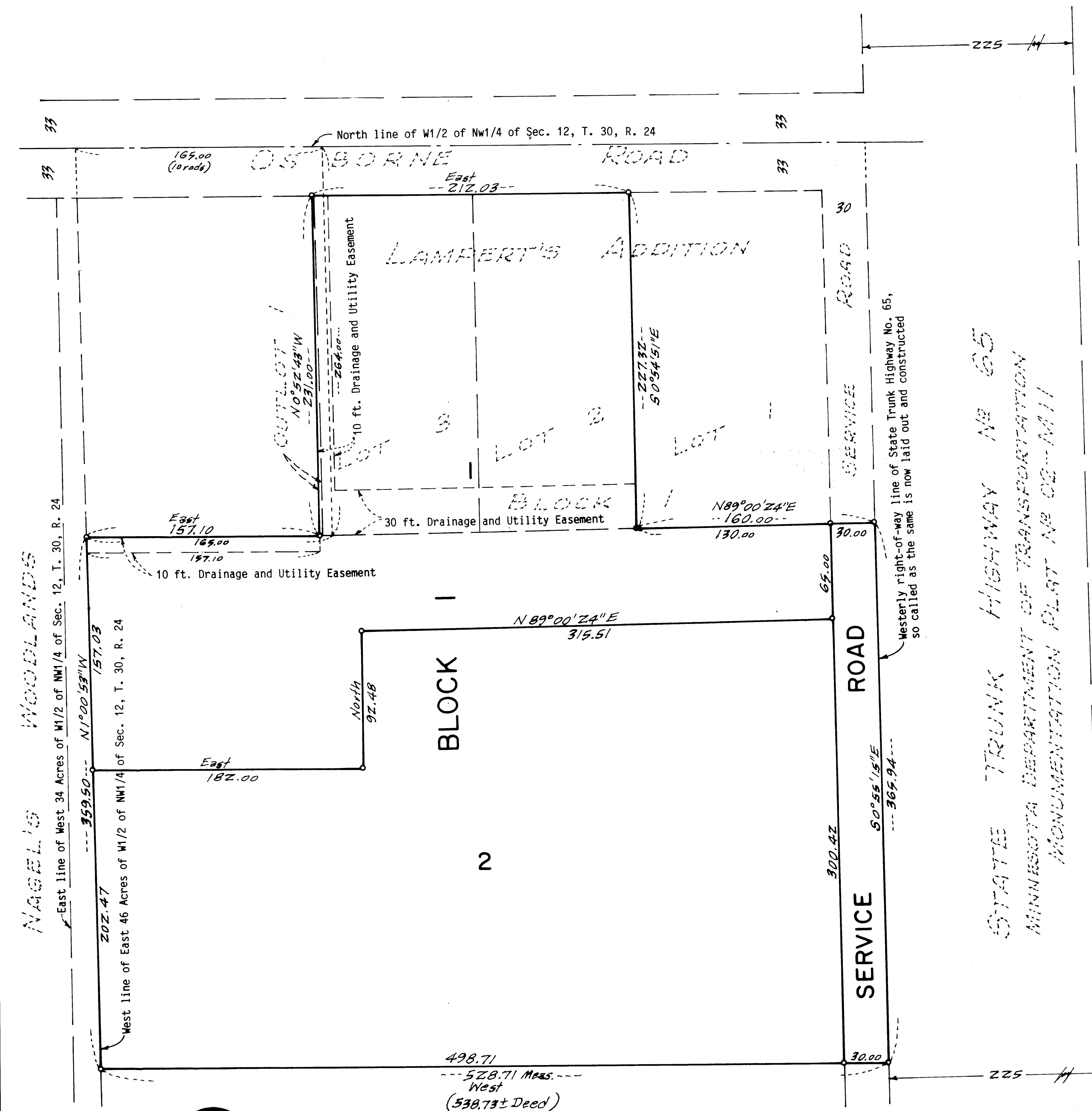


# V F W ADDITION



WOODLANDS  
 NAGEL'S  
 East line of West 34 Acres of W1/2 of NW1/4 of Sec. 12, T. 30, R. 24  
 West line of East 46 Acres of W1/2 of NW1/4 of Sec. 12, T. 30, R. 24

STATE TRUNK HIGHWAY No. 65  
 MINNESOTA DEPARTMENT OF TRANSPORTATION  
 MONUMENTATION PLAT No. 02-111



SCALE: 1 INCH EQUALS 50 FEET

o Denotes Iron Monument  
 For the purposes of this plat the South line of Osborne Road is assumed to bear EAST

KNOW ALL MEN BY THESE PRESENTS:  
 That Fridley V.F.W. Holding Co., a Minnesota Corporation, owner and proprietor of the following described property situated in the County of Anoka and State of Minnesota to wit:

Lots 2 and 3 and Outlot 1, in Block 1, LAMPERT'S ADDITION, according to the recorded plat thereof.

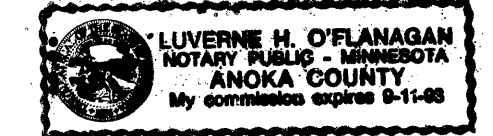
That part of the East 46 acres of the West 1/2 of the Northwest 1/4 of Section 12, Township 30 North, Range 24 West, Anoka County, Minnesota, described as follows: Commencing at a point on the North line thereof distant 10 rods East of the Northwest corner thereof; thence South parallel with the West line of said East 46 acres, a distance of 264.00 feet; thence West parallel with the North line of said Northwest 1/4 to the West line of said East 46 acre tract; thence South along the West line thereof, 359.50 feet; thence East parallel with the North line thereof, a distance of 538.73 feet, more or less, to the Westerly right-of-way line of State Trunk Highway Number 65, so called as the same is now laid out and constructed (Minnesota Department of Transportation Monumentation Plat Number 02-M11); thence Northerly along said Westerly right-of-way line to the North line of said West 1/2 of the Northwest 1/4; thence West along the North line thereof to the point of beginning, Except that part thereof platted in LAMPERT'S ADDITION.

Has caused the same to be surveyed and platted as V F W ADDITION and does hereby donate and dedicate to the public for public use forever the Road, and Easements for Utility and Drainage purposes as shown on the plat. In witness said Fridley V.F.W. Holding Co., has caused these presents to be signed by its proper officers this 16<sup>TH</sup> day of APRIL, 1992.

FRIDLEY V.F.W. HOLDING CO.

by Jim Holloway, its C.E.O.  
 by Ron Saba, its TREASURER

STATE OF MINNESOTA  
 COUNTY OF ANOKA  
 The foregoing instrument was acknowledged before me this 16<sup>th</sup> day of APRIL, 1992, by Jim Holloway, C.E.O. and Ron Saba, TREASURER of Fridley V.F.W. Holding Co., a Minnesota Corporation, on behalf of said corporation.



Liverne M. O'Flanagan  
 Notary Public, Anoka County, Minnesota  
 My commission expires 9-11-93

I hereby certify that I have surveyed and platted the property described on this plat as V F W ADDITION; that this plat is a true and correct representation of said survey; that all distances are correctly shown on the plat in feet and hundredths of a foot; that all monuments have been correctly placed in the ground as shown; that the outside boundary lines are correctly designated on the plat and that there are no wet lands or public highways to be designated on said plat.

Larry R. Couture  
 Larry R. Couture, Land Surveyor  
 Minnesota License No. 9018

STATE OF MINNESOTA  
 COUNTY OF HENNEPIN  
 The foregoing instrument was acknowledged before me this 16<sup>th</sup> day of April, 1992, by Larry R. Couture, Land Surveyor.



Larry R. Couture  
 Notary Public, Hennepin County, Minnesota  
 My commission expires Nov. 1, 1996

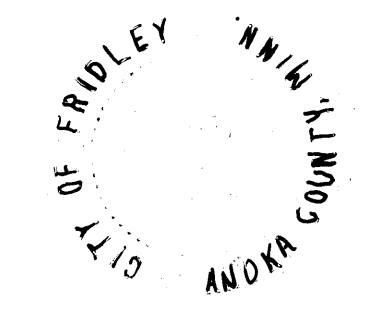
The foregoing plat of V F W ADDITION was approved and accepted by the city council of Fridley, Minnesota at a regular meeting thereof held this 14<sup>th</sup> day of MAY, 1992. If applicable, the written comments and recommendations of the Commissioner of Transportation and the County Highway Engineer have been received by the city or the prescribed 30 day period has elapsed without receipt of such comments and recommendations, as provided by Minnesota Statutes, Section 505.03, Subd. 2.

CITY COUNCIL OF FRIDLEY, MINNESOTA

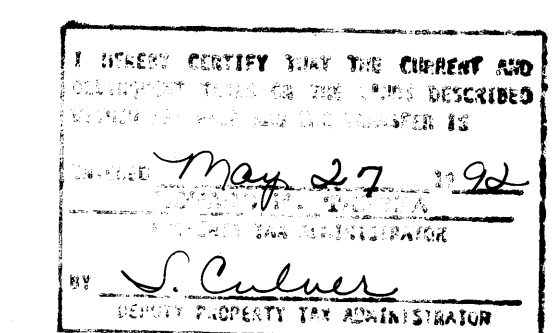
by William J. Nelson Mayor by Steve A. Hagan Clerk

Checked and approved this 13<sup>th</sup> day of MAY, 1992.

MERLYN D. ANDERSON  
 Anoka County Surveyor  
 by Larry D. Skon deputy



980312



OFFICE OF COUNTY RECORDER  
 STATE OF MINNESOTA, COUNTY OF ANOKA

I hereby certify that the within instrument was filed in this office for record on the MAY 27 A.D., 1992 at 8:30 o'clock A.M. and was duly recorded in book 44 of Plats page 34

Red J. Randall  
 County Recorder  
 By Debra Kay Ege Deputy