

OFFICIAL PLAT

BK 20 OF TORNS PG 19

CITY OF BLAINE
COUNTY OF ANOKA
SEC 20, T31N, R23W

VICTORY VILLAGE 4TH ADDITION

KNOW ALL PERSONS BY THESE PRESENTS: That Victory Village, LLC, a Minnesota Limited Liability Company under the laws of the State of Minnesota, owner of the following described property situated in the County of Anoka, State of Minnesota, to wit

Outlot B, VICTORY VILLAGE, Anoka County, Minnesota.

Has caused the same to be surveyed and platted as VICTORY VILLAGE 4TH ADDITION and does hereby donate and dedicate to the public for public use forever the easements as shown on this plat for drainage and utility purposes only.

In witness whereof said Victory Village, LLC has caused these presents to be signed by its proper officer(s) this 9th day of December, 2005.

Victory Village, LLC.
By: [Signature]
Name

As Executive Vice President

State of Minnesota
County of HENNEPIN

The foregoing instrument was acknowledged before me this 9th day of December, 2005, by KEVIN BAARER as EX. VICE PRES. of Victory Village, LLC, a Minnesota Limited Liability Company, on behalf of the company.

[Signature]
Notary Public
My commission expires 1-31-2010



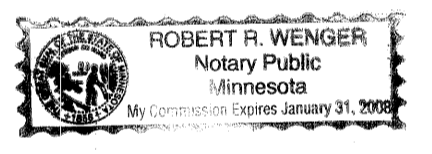
I, Walter J. Gregory, hereby certify that I have surveyed and platted the property described on this plat as VICTORY VILLAGE 4TH ADDITION, that this plat is a correct representation of the survey, that all distances are correctly shown on the plat in feet and hundredths of a foot, that all monuments have been correctly placed in the ground as shown or will be correctly placed in the ground as designated; that the outside boundary lines are correctly designated on the plat and that there are no wet lands or public highways to be designated other than as shown.

[Signature]
Walter J. Gregory, Land Surveyor
Minnesota License Number 14889

State of Minnesota
County of WRIGHT

The foregoing Surveyor's Certificate was acknowledged before me this 28th day of November, 2005, by Walter J. Gregory, Minnesota License No. 14889

[Signature]
Notary Public
My commission expires 1/31/08



CITY OF BLAINE, MINNESOTA

This plat of VICTORY VILLAGE 4TH ADDITION was approved and accepted by the City Council of Blaine, Minnesota, at a regular meeting thereof held this 15th day of September, 2005. If applicable, the written comments and recommendations of the Commissioner of Transportation and the County Highway Engineer have been received by the city or the prescribed 30 day period has elapsed without receipt of such comments and recommendations, as provided by Minn. Statutes, Section 505.03, Subd. 2.

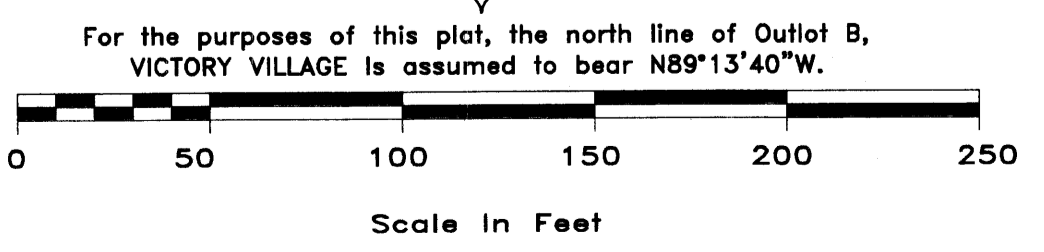
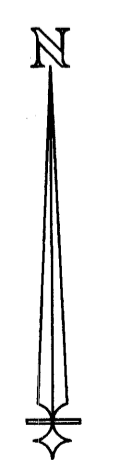
CITY COUNCIL OF BLAINE, MINNESOTA
[Signature] Mayor
[Signature] Clerk
ANOKA COUNTY SURVEYOR

I hereby certify that this plat has been checked and approved this 23rd day of January, 2006.

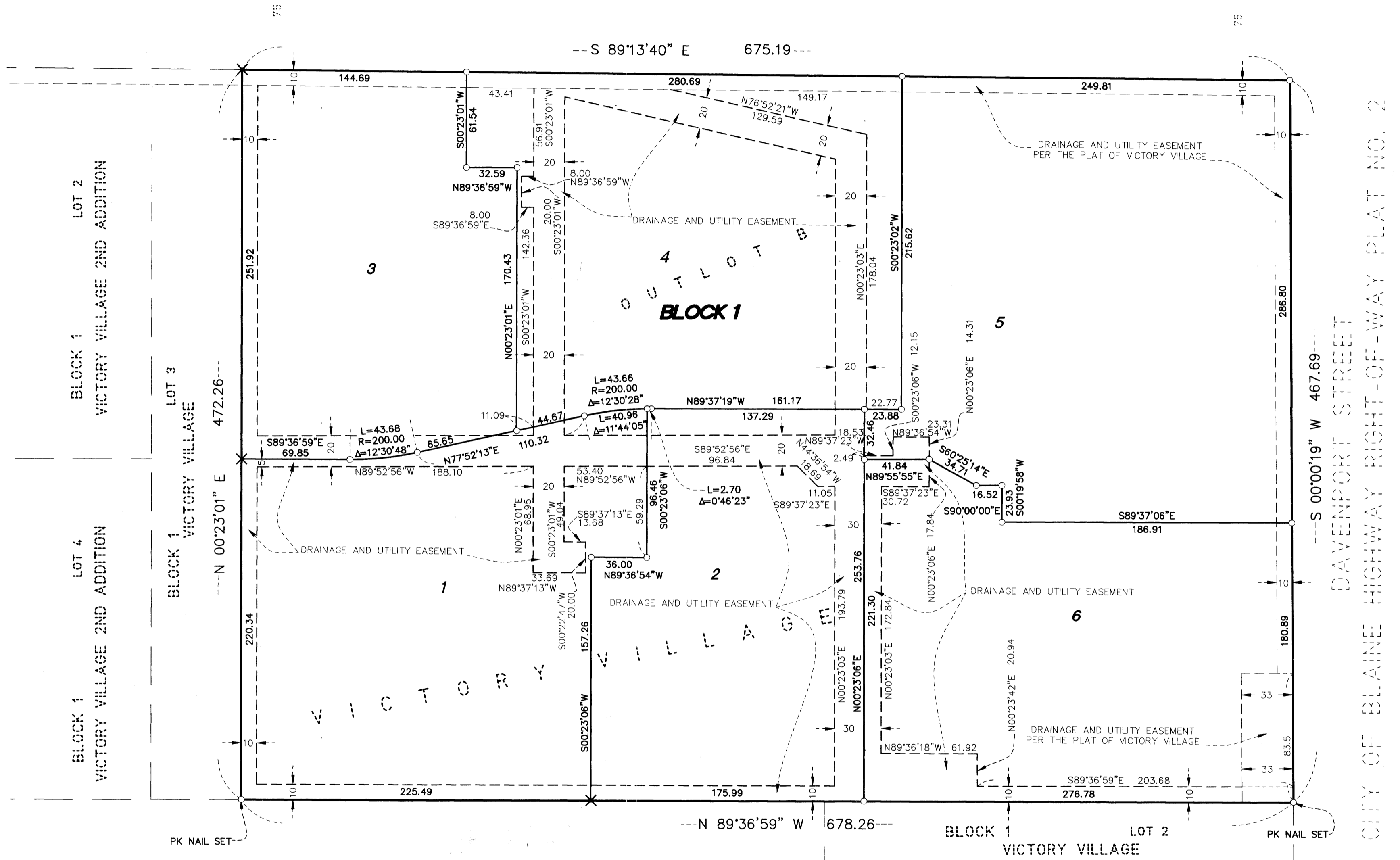
By Larry D. Hoiu
Larry D. Hoiu, Anoka County Surveyor
by Charles F. Setzer, Deputy

486174.002 TORRENS

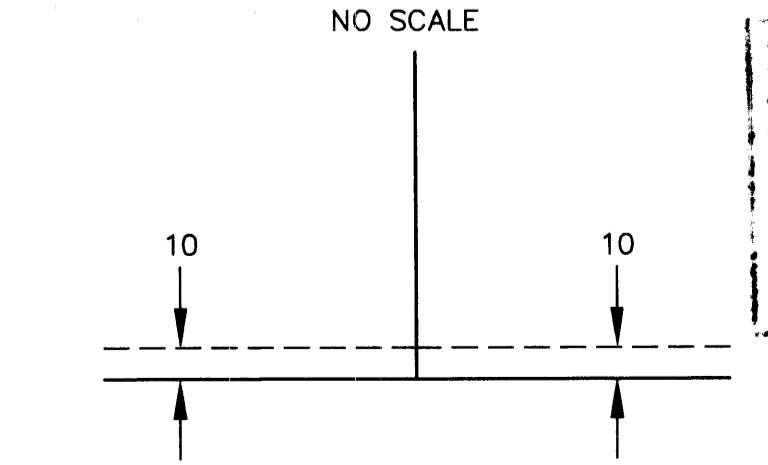
Office of REGISTRAR OF TITLES
STATE OF MINNESOTA
COUNTY OF ANOKA
I hereby certify that the above described plat was filed in the office on Jan. 23, 2006 at 8:51 a.m.
GKE
County Registrar of Titles



109TH AVENUE N.E. (C.S.A.H. NO. 12)



DRAINAGE & UTILITY EASEMENTS ARE SHOWN THUS:



BEING 10 FEET IN WIDTH AND ADJOINING THE INTERIOR OF PLAT BOUNDARY LINES, UNLESS OTHERWISE SHOWN ON THIS PLAT.

FILED
January 23, 2006
[Signature]
COUNTY CLERK

LEGEND
O - DENOTES IRON MONUMENT SET AND MARKED WITH CAP #14889, UNLESS OTHERWISE NOTED
X - DENOTES X IN CONCRETE SET



ULTEIG ENGINEERS, INC.
5201 EAST RIVER ROAD
SUITE 308
MINNEAPOLIS, MINNESOTA 55421
PHONE (763) 571-2500 FAX (763) 571-1168

\$96.00