

VICTORY VILLAGE 5TH ADDITION

Bk 21 of Towns Pg 13
CITY OF BLAINE,
ANOKA COUNTY, MN.
SEC. 20, T. 31, R. 23

KNOW ALL PERSONS BY THESE PRESENTS: That Victory Village, LLC, a Minnesota limited liability company, owner of the following described property situated in the City of Blaine, County of Anoka, State of Minnesota:

Lots 5 and 6, Block 1, VICTORY VILLAGE 4TH ADDITION, according to the recorded plat thereof, Anoka County, Minnesota

Has caused the same to be surveyed and platted as VICTORY VILLAGE 5TH ADDITION and does hereby donate and dedicate to the public for public use forever the public way and also dedicates the easements as shown on this plat for drainage and utility purposes only.

In witness whereof said Victory Village, LLC, a Minnesota limited liability company, has caused these presents to be signed by its proper officers this 3rd day of NOVEMBER, 2008.

Signed: VICTORY VILLAGE, LLC

By: [Signature]
Kevin Brazner, Exec. Vice President

STATE OF MINNESOTA
COUNTY OF Hennepin
The foregoing instrument was acknowledged before me this 3rd day of NOVEMBER, 2008, by KEVIN BRAZNER, as Executive Vice President of Victory Village, LLC, a Minnesota limited liability company, on behalf of the company.

[Signature]
Casey Thompson

Notary Public, Hennepin County, Minnesota
My Commission Expires Jan 31, 2013

I, Mark R. Salo, a duly Professional Land Surveyor under the laws of the State of Minnesota, do hereby certify that I have surveyed or directly supervised the survey of the property described on this plat; prepared this plat or directly supervised the preparation of this plat of VICTORY VILLAGE 5TH ADDITION; that this plat is a correct representation of the boundary survey; that all mathematical data and labels are correctly designated on this plat; that all monuments depicted on this plat have been, or will be correctly set within one year as indicated on this plat; that all water boundaries and wet lands, as defined in Minnesota Statutes 505.01, Subd. 3, as of the date of this certification are shown and labeled on this plat; and all public ways are shown and labeled on this plat.

[Signature]
Mark R. Salo, Professional Land Surveyor
Minnesota License No. 43933

STATE OF MINNESOTA
COUNTY OF Hennepin
The foregoing Surveyor's Certificate was acknowledged before me this 21st day of October, 2008, by Mark R. Salo, Professional Land Surveyor, Minnesota License No. 43933.

[Signature]
Shannon Sinnen
Notary Public, Carver County, Minnesota
My Commission Expires January 31, 2013

BLAINE, MINNESOTA
This plat of VICTORY VILLAGE 5TH ADDITION was approved and accepted by the City Council of Blaine, Minnesota, at a regular meeting held this 16th day of October, 2008, and said plat is in compliance with the provisions of Minnesota Statutes, Section 505.03, Subdivision 2.

[Signature] Mayor
[Signature] Clerk

COUNTY SURVEYOR, Anoka County, Minnesota
This plat has been checked and approved this 23rd day of DECEMBER, 2008.

[Signature]
Larry D. Holm, Anoka County Surveyor

I HEREBY CERTIFY THAT THE CURRENT AND DELINQUENT TAXES ON THE LANDS DESCRIBED WITHIN ARE PAID AND THE TRANSFER IS ENTERED 12/23/08
MAUREEN J. DEVINE
PROPERTY TAX ADMINISTRATOR
BY [Signature]
DEPUTY PROPERTY TAX ADMINISTRATOR

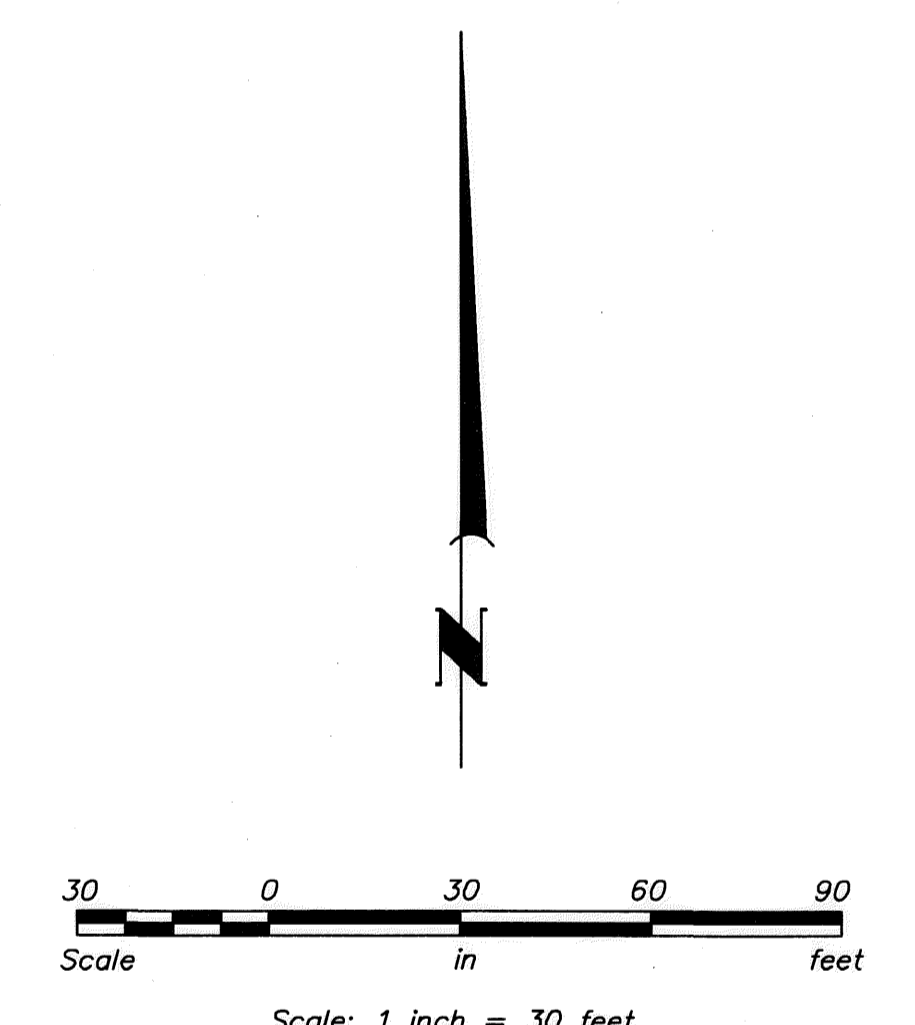
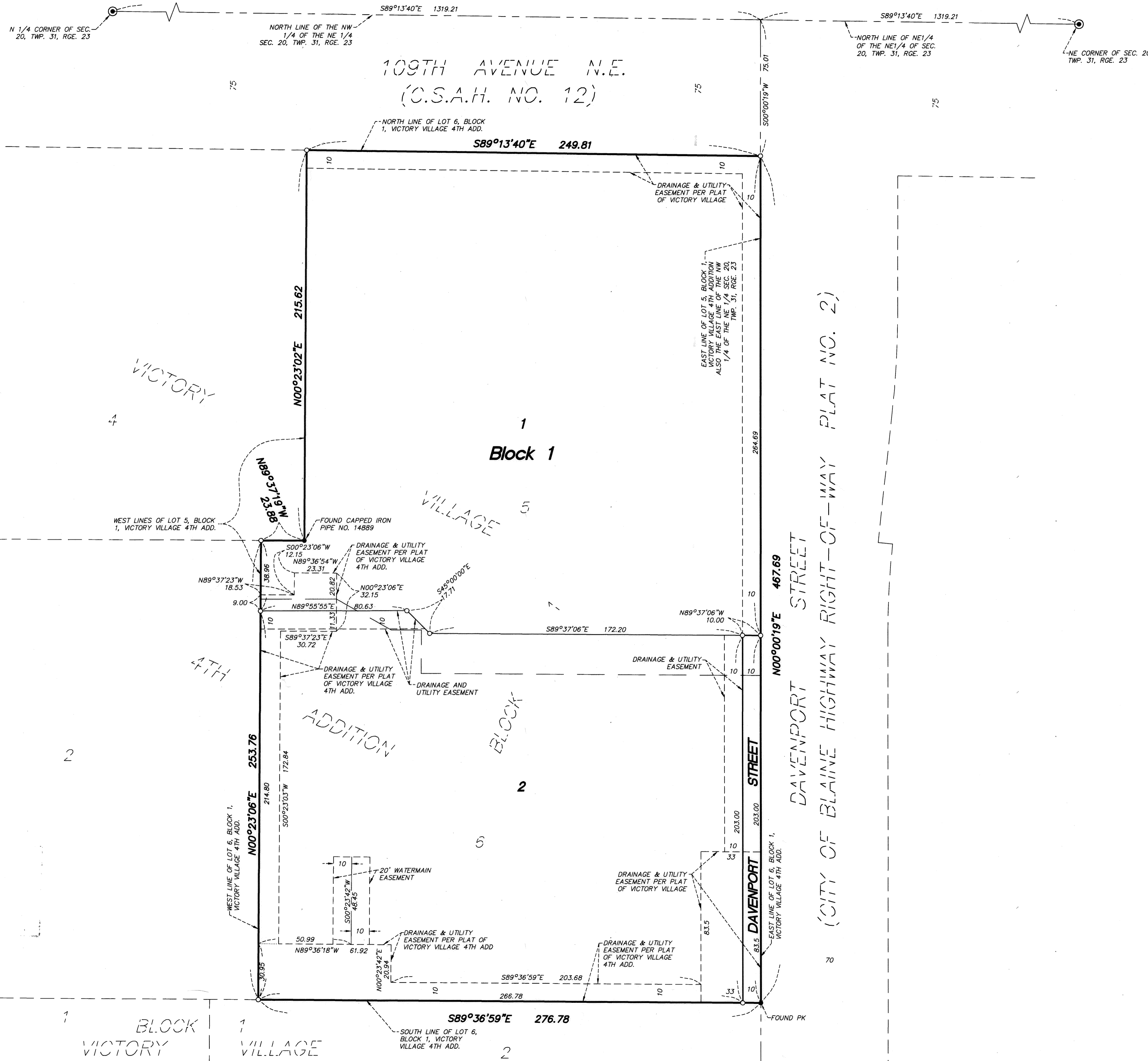
496957-001
Office of REGISTRAR OF TITLES
STATE OF MINNESOTA
COUNTY OF ANOKA
I hereby certify that the within instrument was filed in this office on 12-23-08 at 3:21 o'clock P.M.
Maureen J. Devine, Registrar of Titles
By [Signature]
Deputy Registrar of Titles

\$56.00
Westwood Professional Services, Inc.

VICTORY VILLAGE 5TH ADDITION

Bk 21 of Toms pg 13

CITY OF BLAINE,
ANOKA COUNTY, MN.
SEC. 20, T. 31, R. 23



For the purposes of this plat, the north line of Lot 5, Block 1, VICTORY VILLAGE 4TH ADDITION, is assumed to bear S89°13'40\"/>

- Denotes 1/2 inch by 14 inch iron monument set and marked by License No. 43933
- Denotes 1/2 inch by 14 inch iron monument found and marked as indicated.
- ⊙ Denotes Anoka County cast iron monument found.