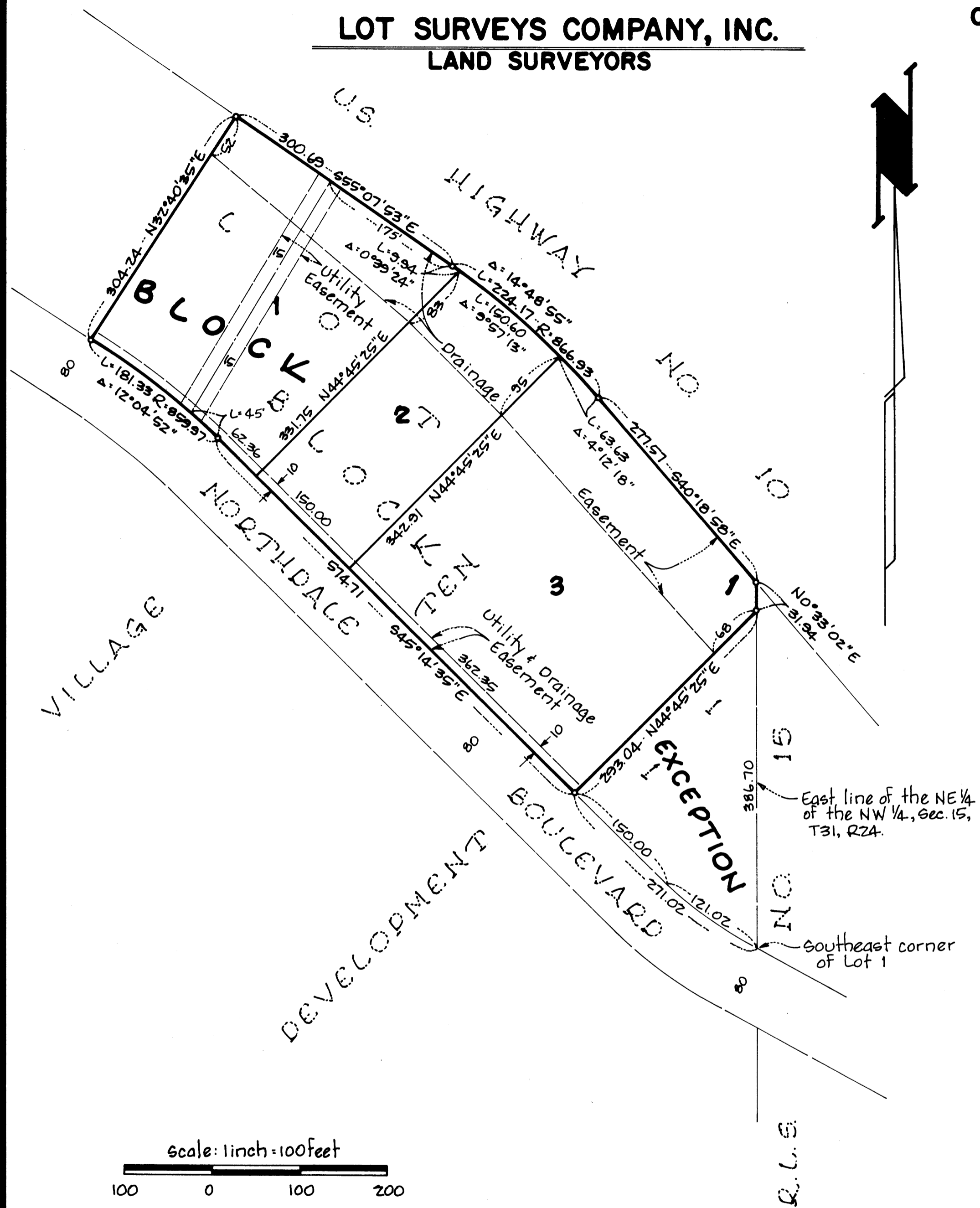


VILLAGE TEN DEVELOPMENT 2ND ADDITION

LOT SURVEYS COMPANY, INC.
LAND SURVEYORS

CITY OF COON RAPIDS

COUNTY OF ANOKA



Scale: 1 inch = 100 feet
100 0 100 200

o - Denotes Iron Monument

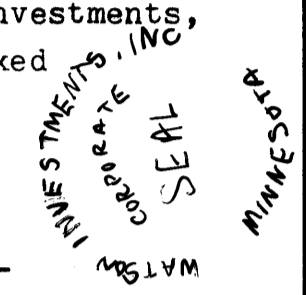
For the purposes of this plat the Northwesterly line of Lot 1, Block 1, VILLAGE TEN DEVELOPMENT is assumed to bear N32°40'35"E.

KNOW ALL MEN BY THESE PRESENTS: That Watson Investments, Inc., a Minnesota corporation, owner and proprietor, of the following described property situated in the County of Anoka, State of Minnesota, to-wit:

Lot 1, Block 1, VILLAGE TEN DEVELOPMENT, except that part described as follows: Beginning at the Southeast corner of said Lot 1; thence Northwesterly along the Southwesterly line of said Lot 1 a distance of 271.02 feet; thence Northeasterly at a right angle a distance of 293.02 feet to the East line of said Lot 1; thence Southerly along the East line of said Lot 1 a distance of 386.70 feet to the point of beginning.

Has caused the same to be surveyed and platted as VILLAGE TEN DEVELOPMENT 2ND ADDITION and does hereby donate and dedicate to the public for public use forever the Utility and Drainage Easements as shown on the plat. In witness whereof said Watson Investments, Inc., a Minnesota corporation, has caused these presents to be signed by its proper officer and its corporate seal to be hereunto affixed this 27th day of October 1983.
Signed:

WATSON INVESTMENTS, INC.
Frederick O. Watson
Frederick O. Watson, president



State of Minnesota
County of Hennepin The foregoing instrument was acknowledged before me this 27th day of October 1983, by Frederick O. Watson, President of Watson Investments, Inc., a Minnesota corporation.

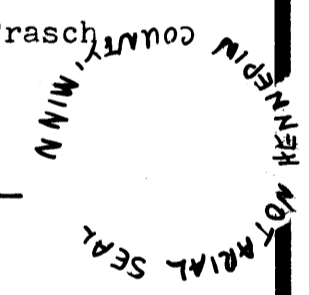
Alvina M. Lusk
Notary Public, Hennepin County, Minnesota
My Commission Expires April 16, 1985

I hereby certify that I have surveyed and platted the property described on this plat as VILLAGE TEN DEVELOPMENT 2ND ADDITION; that this plat is a correct representation of said survey; that the distances are correctly shown on said plat in feet and hundredths of a foot; that all monuments have been correctly placed in the ground as shown on said plat; that the outside boundary lines are correctly designated on said plat; and that there are no wetlands or public highways to be designated other than as shown thereon.

Raymond A. Prasch
Raymond A. Prasch, Registered Land Surveyor
Minnesota Registration No. 6743

State of Minnesota
County of Hennepin The foregoing instrument was acknowledged before me this 25th day of October 1983, by Raymond A. Prasch, a Registered Land Surveyor.

Milton E. Hyland
Milton E. Hyland - Notary Public, Hennepin County, Minnesota
My Commission Expires November 19, 1987



The plat of VILLAGE TEN DEVELOPMENT 2ND ADDITION was approved by the Planning and Zoning Commission of the City of Coon Rapids at a regular meeting thereof held this 15th day of September 1983.
CITY OF COON RAPIDS, MINNESOTA

By Donna M. Nueve Chairman By [Signature] Clerk

We hereby certify that the City Council of the City of Coon Rapids, Anoka County, Minnesota, duly accepted and approved the plat of VILLAGE TEN DEVELOPMENT 2ND ADDITION, at a regular meeting thereof held this 25th day of October 1983.

By Robert B. Lewis Mayor By [Signature] Clerk

Checked and approved this 6th day of December 1983.

Roland V. Anderson
Anoka County Surveyor



NO DELINQUENT TAXES AND TRANSFER ENTERED
I HEREBY CERTIFY THAT THE TAXES PAYABLE IN THE YEAR 1984 ON THE LAND DESCRIBED WITHIN ARE PAID
Date Mar 29 1984
Charles D. [Signature]
Auditor, Anoka County
Donald M. [Signature]
Anoka County Treasurer

630079
OFFICE OF COUNTY RECORDER
STATE OF MINNESOTA, COUNTY OF ANOKA
I hereby certify that the within instrument was filed in this office for record on the MAR 29 1984 at 5 o'clock P.M. and was duly recorded in book 33 of PLATS, page 46.

[Signature]
County Recorder
[Signature]
Deputy