

VISTAS AT NORTH COMMONS

Book 23 of Towns Page 5

CITY OF RAMSEY
COUNTY OF ANOKA
SEC. 28, T. 32, R. 25

KNOW ALL PERSONS BY THESE PRESENTS: That Morning Sun Homes, Inc., a Minnesota corporation, owner of the following described property:

Outlot A, RAMSEY TOWN CENTER 8TH ADDITION, according to the recorded plat thereof, Anoka County, Minnesota.

Has caused the same to be surveyed and platted as VISTAS AT NORTH COMMONS and does hereby dedicate to the public for public use the drainage and utility easements as shown on this plat.

In witness whereof said Morning Sun Homes, Inc., a Minnesota corporation, has caused these presents to be signed by its proper officer this 14th day of April, 2017.

MORNING SUN HOMES, INC.

By [Signature]
Its Pres

STATE OF MINNESOTA
COUNTY OF Anoka
This instrument was acknowledged before me this 14th day of April, 2017 by Mark Maehleners its President of Morning Sun Homes, Inc., a Minnesota corporation, on behalf of the corporation.

[Signature]
Notary Public, Anoka County, Minnesota
My Commission Expires 1/31/20

JoAnn E. Shaw

I Craig W. Morse do hereby certify that this plat was prepared by me or under my direct supervision; that I am a duly Licensed Land Surveyor in the State of Minnesota; that this plat is a correct representation of the boundary survey; that all mathematical data and labels are correctly designated on this plat; that all monuments depicted on this plat have been, or will be correctly set within one year; that all water boundaries and wet lands, as defined in Minnesota Statutes, Section 505.01, Subd. 3, as of the date of this certificate are shown and labeled on this plat; and all public ways are shown and labeled on this plat.

Dated this 11th day of April, 2017.

[Signature]
Craig W. Morse, Licensed Land Surveyor
Minnesota License No. 23021

STATE OF MINNESOTA
COUNTY OF HENNEPIN
This instrument was acknowledged before me this 11th day of April, 2017 by Craig W. Morse.

[Signature] Shannon Sinner
Notary Public, Carver County, Minnesota
My Commission Expires January 31, 2018

CITY COUNCIL, CITY OF RAMSEY, MINNESOTA
This plat of VISTAS AT NORTH COMMONS was approved and accepted by the City Council of the City of Ramsey, Minnesota at a regular meeting thereof held this 11th day of April, 2017, and said plat is in compliance with the provisions of Minnesota Statutes, Section 505.03, Subd. 2.

[Signature] [Signature]
Mayor Clerk

COUNTY SURVEYOR
I hereby certify that in accordance with Minnesota Statutes, Section 505.021, Subd. 11, this plat has been reviewed and approved this 21st day of April, 2017.

Larry D. Holm by Charles F. Reizen, Deputy
Larry D. Holm, Anoka County Surveyor

COUNTY AUDITOR/TREASURER
Pursuant to Minnesota Statutes, Section 505.021, Subd. 9, taxes payable in the year 2017 on the land hereinbefore described have been paid. Also, pursuant to Minnesota Statutes, Section 272.12, there are no delinquent taxes and transfer entered this 24th day of April, 2017.

Jonell M. Sawyer
Property Tax Administrator
By [Signature], Deputy

COUNTY RECORDER/REGISTRAR OF TITLES
COUNTY OF ANOKA, STATE OF MINNESOTA
I hereby certify that this plat of VISTAS AT NORTH COMMONS was filed in the office of the County Recorder/Registrar of Titles for public record on this 24th day of April, 2017, at 9:44 o'clock A.M. and was duly recorded in Book A3 of Towns Page 5, as Document Number 547824.007

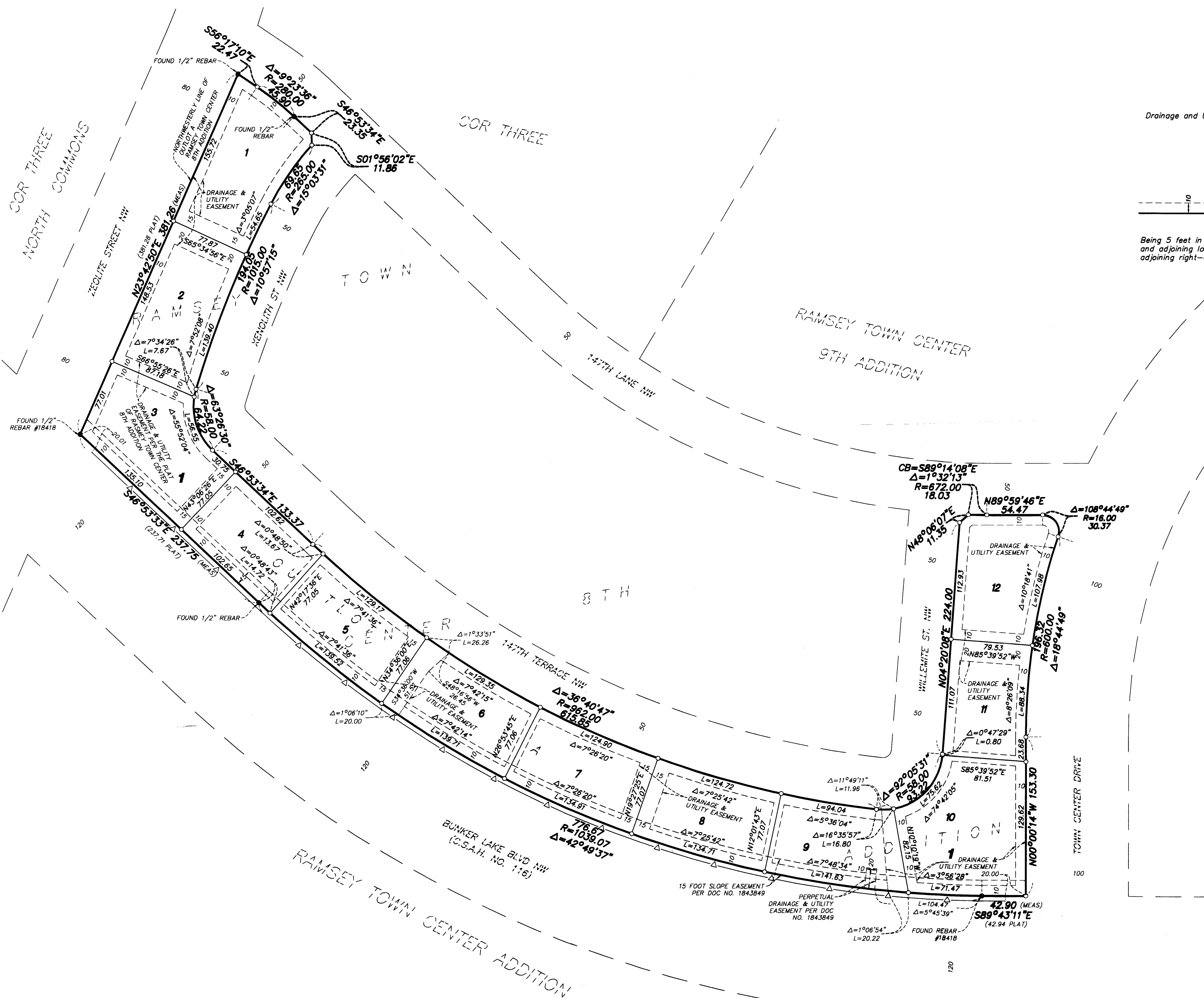
Jonell M. Sawyer
County Recorder/Registrar of Titles
By [Signature], Deputy



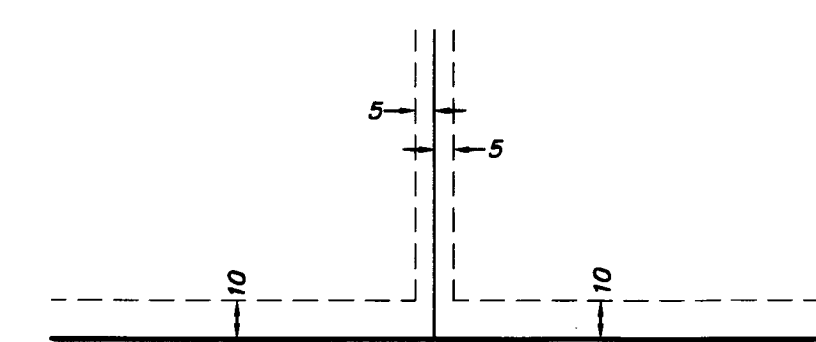
VISTAS AT NORTH COMMONS

BOOK 23 of Plans Page 5

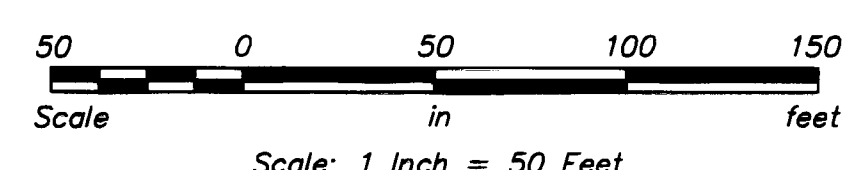
CITY OF RAMSEY
COUNTY OF ANOKA
SEC. 28, T. 32, R. 25



Drainage and Utility Easements are shown thus:



Being 5 feet in width, unless otherwise indicated, and adjoining lot lines, and 10 feet in width and adjoining right-of-way lines as shown on the plat.



The northwesterly line of Outlot A, RAMSEY TOWN CENTER 8TH ADDITION, is assumed to bear N 23°42'50" E

- Denotes 1/2 inch by 14 inch iron rebar set and marked by License No. 23021
- Denotes found monument and marked as shown
- △ Denotes Right of Access dedicated to Anoka County per plat of RAMSEY TOWN CENTER ADDITION