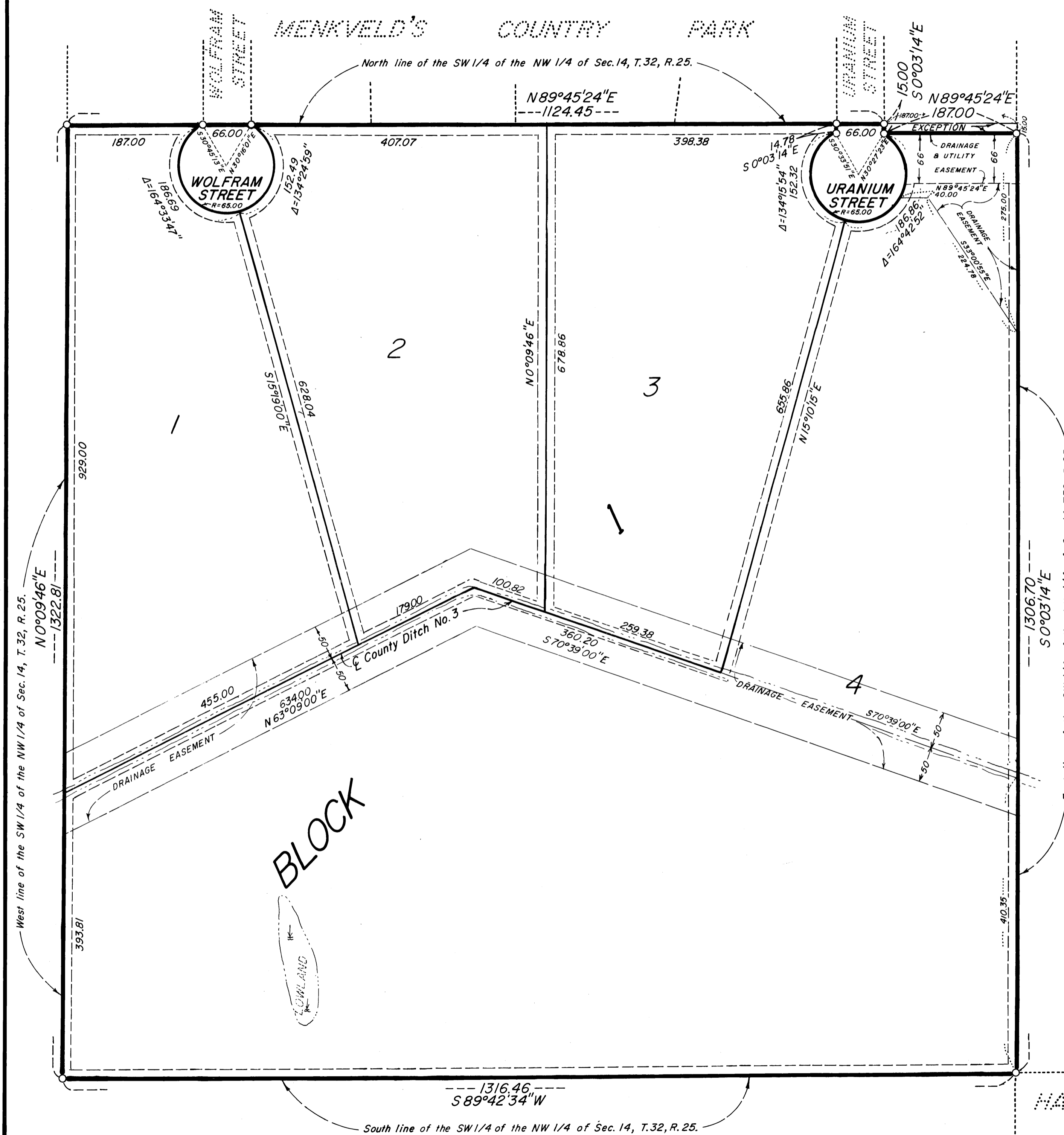


VOLTIN'S OAK HILL ESTATES

CITY OF RAMSEY
COUNTY OF ANOKA



KNOW ALL PERSONS BY THESE PRESENTS: That Dale J. Voltin, a single person, and David G. Schulte, a single person, owners and proprietors, and Lucille M. Stevens, a widow, mortgagee of the following described property situated in the State of Minnesota, County of Anoka, to-wit:

The Southwest Quarter of the Northwest Quarter of Section 14, Township 32, Range 25, Anoka County, Minnesota, except the north 15 feet of the east 187 feet thereof, as measured along the east and north lines respectively.

Have caused the same to be surveyed and platted as VOLTIN'S OAK HILL ESTATES, and do hereby donate and dedicate to the public for public use forever the Streets as shown on this plat. Also dedicating to the public the easements for drainage and/or utility purposes as shown on the plat. In witness whereof said Dale J. Voltin has set his hand this 22 day of August, 1986. Also in witness whereof said David G. Schulte has set his hand this 22 day of August, 1986. Also in witness whereof said Lucille M. Stevens has set her hand this 22 day of August, 1986.

SIGNED:

Dale J. Voltin
Dale J. Voltin

Lucille M. Stevens
Lucille M. Stevens

David G. Schulte
David G. Schulte

STATE OF MINNESOTA
COUNTY OF Anoka

The foregoing instrument was acknowledged before me this 22nd day of August, 1986, by Dale J. Voltin, a single person.

Maribeth L. Parks
Notary Public, Anoka County, Minnesota
My Commission expires _____

STATE OF MINNESOTA
COUNTY OF Anoka

The foregoing instrument was acknowledged before me this 22nd day of August, 1986, by David G. Schulte, a single person.

Maribeth L. Parks
Notary Public, Anoka County, Minnesota
My Commission expires _____

STATE OF MINNESOTA
COUNTY OF Anoka

The foregoing instrument was acknowledged before me this 22nd day of August, 1986, by Lucille M. Stevens, a widow.

Maribeth L. Parks
Notary Public, Anoka County, Minnesota
My Commission expires _____

I hereby certify that I have surveyed and platted the land described in the dedication on this plat as VOLTIN'S OAK HILL ESTATES; that the plat is a correct representation of said survey; that all distances are correctly shown on said plat in feet and hundredths of a foot; that the monuments have been correctly placed in the ground as shown; that the outside boundaries are correctly designated on said plat; and that there are no wet lands or public highways to be designated on said plat other than as shown thereon.

Jeffrey N. Caine
Jeffrey N. Caine
Land Surveyor
Minnesota Reg. No. 12251

STATE OF MINNESOTA
COUNTY OF ANOKA

The surveyors certificate was acknowledged before me, a Notary Public, this 20th day of August, 1986, by Jeffrey N. Caine, Land Surveyor.

Sandra Lee Norman
Notary Public, Anoka County, Minnesota
My Commission expires 4/28/91

We hereby certify that the City Council of the City of Ramsey, Anoka County, Minnesota, duly accepted and approved the plat of VOLTIN'S OAK HILL ESTATES at a regular meeting held this 27th day of May, 1986. If applicable, the written comments and recommendations of the Commissioner of Transportation and the County Highway Engineer have been received by the City or the prescribed 30 day period has elapsed without receipt of such comments and recommendations as provided by Minn. Statutes, Section 505.03, Subd.

By Soy R. Reimann Mayor
By Paul R. Gault Clerk

Checked and approved this 29th day of October, 1986.

By Roland W. Anderson Anoka County Surveyor

"NO DELINQUENT TAXES AND TRANSFER ENTERED"

October 29, 1986
Charles R. DeBore
Auditor, Anoka County

By Janelle M. Sawyer
Deputy

SCALE 1 INCH = 100 FEET

NOTE: FOR THE PURPOSES OF THIS PLAT, THE W. LINE OF THE SW 1/4 OF THE NW 1/4 OF SEC. 14, T. 32, R. 25, IS ASSUMED TO BEAR N 0°09'46"E.

DRAINAGE AND UTILITY EASEMENTS SHOWN THUS, UNLESS OTHERWISE SHOWN ON THE PLAT.

I HEREBY CERTIFY THAT THE TAXES PAYABLE IN THE YEAR 1986, ON THE LANDS DESCRIBED WITHIN ARE PAID

Domestic Bank & Trust
Anoka County Treasurer

OFFICE OF COUNTY RECORDER
STATE OF MINNESOTA, COUNTY OF ANOKA
I hereby certify that the within instrument was filed in this office for record on the 29th day of October, A.D., 1986, at 3 o'clock P.M., and was duly recorded in book 37 of Plats, page 2.

Paul J. Omsdahl
County Recorder

By Jack Kay Ege
Deputy

CAME & ASSOCIATES
LAND SURVEYORS, INC.