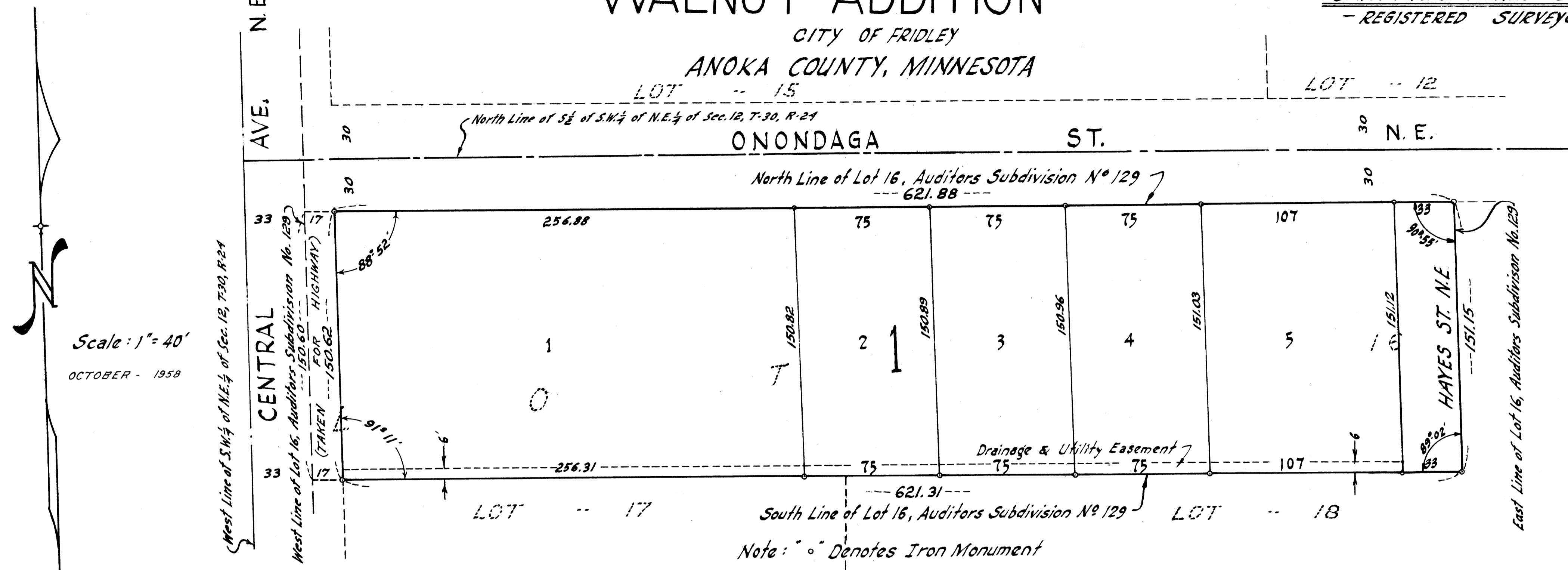


WALNUT ADDITION

CITY OF FRIDLEY
ANOKA COUNTY, MINNESOTA

a CARTWRIGHT AND OLSON *a*
- REGISTERED SURVEYORS -



Scale: 1" = 40'
OCTOBER - 1958

KNOW ALL MEN BY THESE PRESENTS: THAT WE, ROBERT CARLSON AND HELEN L. CARLSON, HIS WIFE, OWNERS AND PROPRIETORS OF THE FOLLOWING DESCRIBED PROPERTY SITUATE IN THE COUNTY OF ANOKA AND STATE OF MINNESOTA TO-WIT: THE NORTH 1/2 OF LOT 5, BLOCK 2, FLANERY'S OAKLAND ADDITION, EXCEPT THE WEST 17 FEET THEREOF TAKEN FOR CENTRAL AVENUE ACCORDING TO THE PLAT THEREOF ON FILE AND OF RECORD IN THE OFFICE OF THE REGISTER OF DEEDS, ANOKA COUNTY, MINNESOTA, ALSO KNOWN AS LOT 16, AUDITOR'S SUBDIVISION NUMBER 129, ANOKA COUNTY, MINNESOTA, EXCEPT THE WEST 17 FEET THEREOF. HAVE CAUSED THE SAME TO BE SURVEYED AND PLATTED AS WALNUT ADDITION AND DO HEREBY DONATE AND DEDICATE TO THE PUBLIC FOR PUBLIC USE FOREVER THE STREETS AND AVENUE AS SHOWN ON THE ANNEXED PLAT, ALSO SUBJECT TO UTILITY AND DRAINAGE EASEMENT AS SHOWN ON SAID PLAT. IN WITNESS WHEREOF WE HAVE HEREUNTO SET OUR HANDS AND SEALS ON THIS 2nd DAY OF May A.D. 1962.

IN PRESENCE OF:
G.M. Samuelson AND P.M. Peterson
G.M. Samuelson AND P.M. Peterson

SIGNED:
Robert Carlson
Helen L. Carlson

STATE OF MINNESOTA) ss
COUNTY OF ANOKA)
ON THIS 2nd DAY OF May A.D. 1962, BEFORE ME, A NOTARY PUBLIC, WITHIN AND FOR SAID COUNTY AND STATE PERSONALLY APPEARED ROBERT CARLSON AND HELEN L. CARLSON, HIS WIFE, TO ME KNOWN TO BE THE PERSONS DESCRIBED IN AND WHO EXECUTED THE FOREGOING INSTRUMENT AND THEY AFFIRM AND ACKNOWLEDGE THAT THEY EXECUTED THE SAME AS THEIR OWN FREE ACT AND DEED.

Marvin C. Bruness
NOTARY PUBLIC, ANOKA COUNTY, MINNESOTA
MY COMMISSION EXPIRES Dec 26, 1964

OFFICE OF REGISTER OF DEEDS } ss
STATE OF MINNESOTA, COUNTY OF ANOKA }
I hereby certify that the within instruments were filed in this office for record on the 5th day of JUNE A.D. 1962 at 12 o'clock A.M., and was duly recorded in book W of Plat page 6
John W. Peterson
Register of Deeds

TAXES PAID
This 5th day of June, 1962
Kenneth A. Campbell
Treasurer, Anoka County, Minn.
John W. Peterson Deputy

I HEREBY CERTIFY THAT TAXES FOR THE YEAR 1961 ON THE LANDS DESCRIBED WITHIN ARE PAID
Paul J. Peterson
County Treasurer

I HEREBY CERTIFY THAT I HAVE SURVEYED AND PLATTED THE LAND DESCRIBED IN THE DEDICATION ON THIS PLAT AS WALNUT ADDITION; THAT THIS PLAT IS A CORRECT REPRESENTATION OF SAID SURVEY; THAT ALL DISTANCES ARE CORRECTLY SHOWN ON SAID PLAT IN FIGURES DENOTING FEET AND DECIMALS OF A FOOT; THAT THE MONUMENTS FOR THE GUIDANCE OF FUTURE SURVEYS HAVE BEEN CORRECTLY PLACED IN THE GROUND AS SHOWN ON SAID PLAT; THAT THE TOPOGRAPHY OF THE LAND IS CORRECTLY SHOWN ON SAID PLAT; AND THAT THERE ARE NO WET LANDS OR PUBLIC HIGHWAYS TO BE DESIGNATED ON SAID PLAT OTHER THAN ARE SHOWN THEREON.

Harry A. Cartwright
REGISTERED LAND SURVEYOR, MINNESOTA REG. NO. 1983

STATE OF MINNESOTA) ss
COUNTY OF HENNEPIN)

ABOVE CERTIFICATE SUBSCRIBED AND SWORN TO BEFORE ME, A NOTARY PUBLIC WITHIN AND FOR SAID COUNTY AND STATE, ON THIS 25th DAY OF April A.D. 1962.

Clara Mae Dickey
NOTARY PUBLIC, HENNEPIN COUNTY, MINNESOTA

MY COMMISSION EXPIRES 1968

WE HEREBY CERTIFY THAT THE CITY COUNCIL OF THE CITY OF FRIDLEY, ANOKA COUNTY, MINNESOTA, DULY ACCEPTED AND APPROVED THE ANNEXED PLAT OF WALNUT ADDITION AT A REGULAR MEETING THEREOF, HELD THIS 2nd DAY OF May A.D. 1962.

CITY OF FRIDLEY, ANOKA COUNTY, MINNESOTA

T. E. Freig
MAYOR

Earl P. Wagner
CITY MANAGER

CHECKED AND APPROVED THIS 4th DAY OF May 1962.

BY Robert H. Anderson by Eric Regus
COUNTY SURVEYOR, ANOKA COUNTY, MINNESOTA