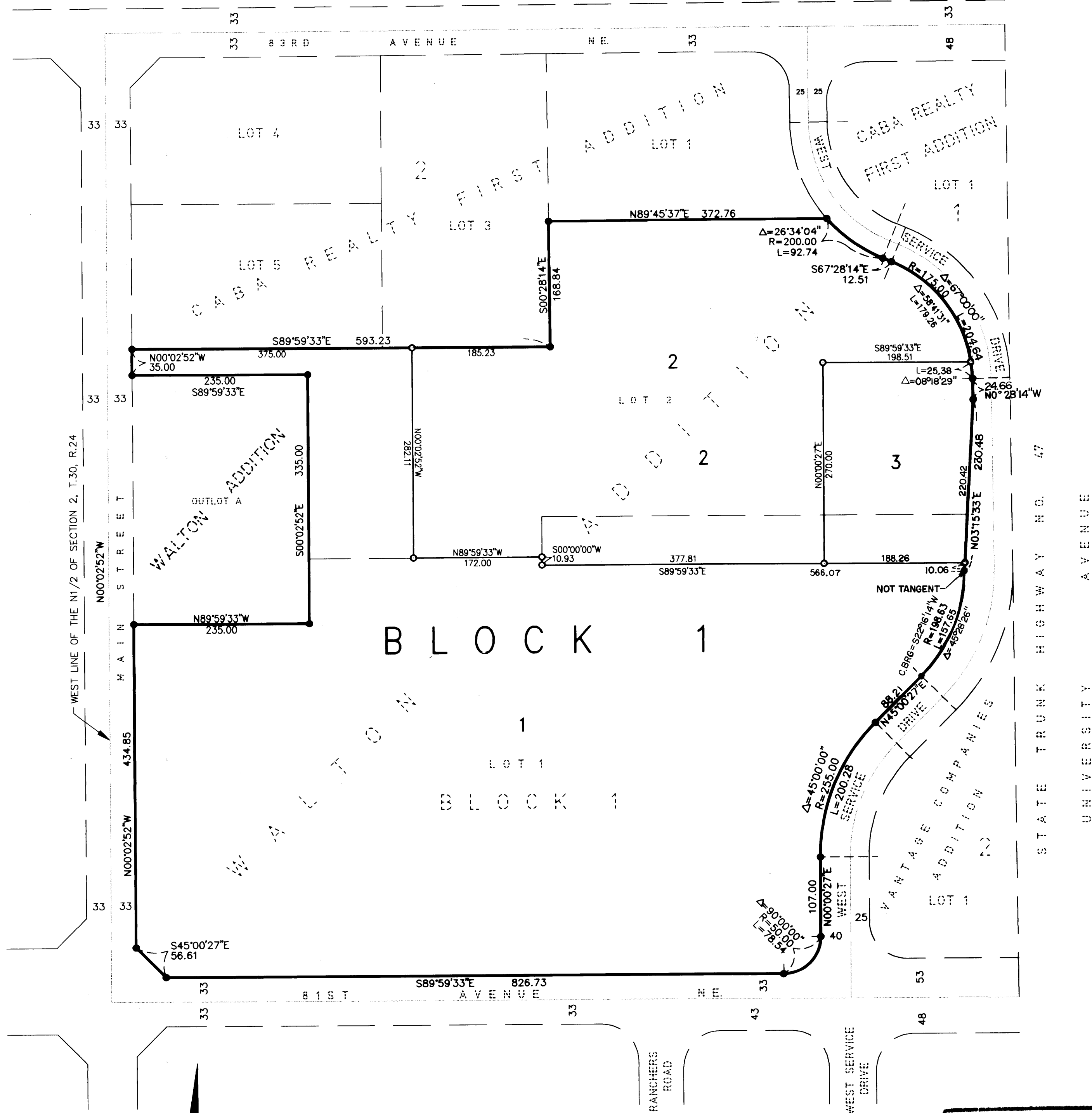


# WALTON 2ND ADDITION



304346

Office of REGISTRAR OF TITLES  
STATE OF MINNESOTA  
COUNTY OF ANOKA

I hereby certify that the within instrument was filed in the office of the Registrar of Titles on the 11th day of November, 1997.

Edward M. Jensen, Registrar of Titles

By Kathleen Beier  
Deputy Registrar of Titles

KNOW ALL PERSONS BY THESE PRESENTS: That Wal-Mart Stores, Inc., a Delaware corporation, fee owner of the following described property situated in the County of Anoka, State of Minnesota, to wit:

Lots 1 and 2, Block 1, WALTON ADDITION, according to the recorded plat thereof, Anoka County, Minnesota.

Have caused the same to be surveyed and platted as WALTON 2ND ADDITION.

In witness whereof, said Wal-Mart Stores, Inc., a Delaware corporation, has caused these presents to be signed by its proper officer this 11th day of November, 1997.

Signed: Wal-Mart Stores, Inc.  
By: A.H.H.  
as VICE President

State of Arkansas  
County of Benton

The foregoing instrument was acknowledged before me this 7th day of November, 1997, by Anthony Fuller as VICE President of Wal-Mart Stores, Inc., a Delaware corporation, on behalf of the corporation.

Viola B. White  
Notary Public, Benton County, ARKANSAS

My Commission Expires: August 11, 2000

"NOTARY SEAL"  
Viola B. White, Notary Public  
Benton County, State of Arkansas  
My Commission Expires 8/1/2000

I, Paul A. Johnson, hereby certify that I have surveyed and platted the property described on this plat as WALTON 2ND ADDITION; that this plat is a correct representation of said survey; that all distances are correctly shown on the plat in feet and hundredths of a foot; that all monuments have been correctly placed in the ground as shown on said plat or will be placed as required by the local governmental unit as designated on said plat, in accordance to Minnesota Statutes, Section 505.02, Subd. 1; that the outside boundary lines are correctly designated on the plat; and that there are no wet lands or public highways to be designated other than as shown.

Paul A. Johnson  
Paul A. Johnson, Land Surveyor  
Minnesota Registration No. 10938

State of Minnesota  
County of Anoka

The foregoing Surveyor's Certificate was acknowledged before me this 5th day of November, 1997, by Paul A. Johnson, Land Surveyor, Minnesota Registration No. 10938.

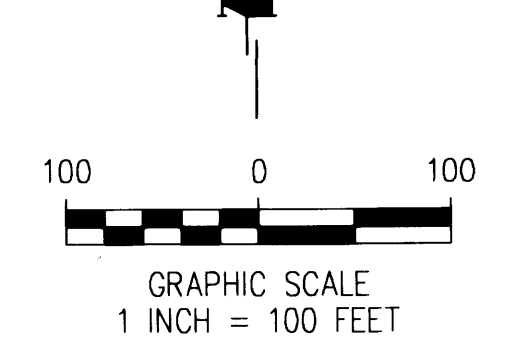
Paul A. Johnson  
Notary Public, Ramsey County, Minnesota.

This plat of WALTON 2ND ADDITION was approved and accepted by the City Council of the City of Fridley, Minnesota, at a regular meeting thereof held this 10th day of November, 1997. If applicable, the written comments and recommendations of the Commissioner of Transportation and the County Highway Engineer have been received by the City or the prescribed 30-day period has elapsed without receipt of such comments and recommendations, as provided by Minnesota Statutes, Section 505.03, Subd. 2.

Mary J. Jorgenson Mayor  
William A. Champa Clerk

This plat has been checked and approved this 3rd day of Dec., 1997.

By: MERYLN D. ANDERSON  
Meryln D. Anderson  
Anoka County Surveyor  
by Larry D. Naim deputy



FOR THE PURPOSES OF THIS PLAT THE WEST LINE OF THE N 1/2 OF SECTION 2, T.30, R.24 IS ASSUMED TO BEAR N00°02'52"W.

- DENOTES 1/2 INCH BY 14 INCH IRON PIPE MONUMENT MARKED WITH REGISTRATION NO. 10938.
- DENOTES IRON MONUMENT FOUND

I HEREBY CERTIFY THAT THE CHARGE AND DELINQUENT TAXES ON THE LANDS DESCRIBED WITHIN ARE PAID AND THE TRANSFER IS

ENTERED Dec 9 1997  
EDWARD M. JENSEN  
PROPERTY TAX ADMINISTRATOR

McCOMBS FRANK ROOS ASSOCIATES, INC.  
ENGINEERS AND SURVEYORS

Receipt # 12 97086600 \$ 79.50 + 97086558 \$130.00

CITY OF FRIDLEY  
ANOKA COUNTY