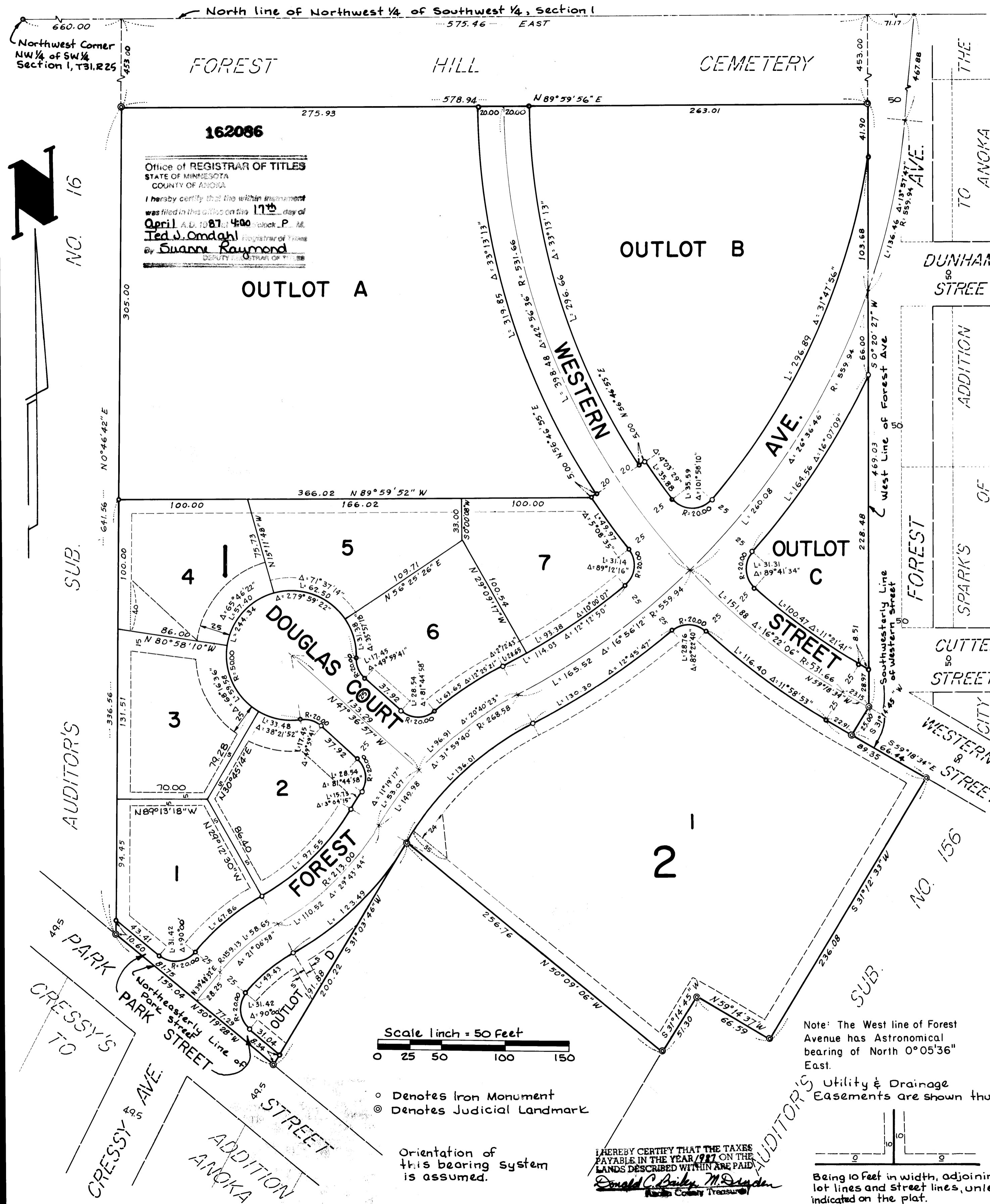


WARD PARK ADDITION CITY OF ANOKA ANOKA COUNTY



Office of REGISTRAR OF TITLES
STATE OF MINNESOTA
COUNTY OF ANOKA

I hereby certify that the within instrument was filed in this office on the 17th day of April, A.D. 1987, at 4:00 P.M.
Ted J. Omdahl, Registrar of Titles
by Suann Raymond, Secretary

KNOW ALL MEN BY THESE PRESENTS: That the City of Anoka, a Minnesota Municipal Corporation, owner and proprietor of the following described property situate in the County of Anoka, State of Minnesota, to-wit:

That part of the Northwest Quarter of the Southwest Quarter of Section 1, Township 31, Range 25 described as follows:
Commencing at a point on the north line of said Northwest Quarter of the Southwest Quarter distant 660.00 feet east from the north-west corner of said Northwest Quarter of the Southwest Quarter; thence on an assumed bearing of East, along said North line, a distance of 575.46 feet to the intersection with the northerly extension of the west line of Forest Avenue; thence South 0 degrees 20 minutes 27 seconds West, along the west line of said Forest Avenue and its northerly extension, a distance of 453.00 feet to the actual point of beginning of the land to be described; thence continuing South 0 degrees 20 minutes 27 seconds West, along said west line of Forest Avenue, a distance of 469.03 feet; thence South 31 degrees 14 minutes 45 seconds West, along said west line of Forest Avenue, a distance of 25.00 feet to the intersection with the southwesterly line of Western Street; thence South 59 degrees 18 minutes 34 seconds East, along the southwesterly line of said Western Street, a distance of 66.44 feet; thence South 31 degrees 12 minutes 33 seconds West a distance of 236.08 feet; thence North 5 degrees 14 minutes 37 seconds West a distance of 66.59 feet; thence South 31 degrees 14 minutes 45 seconds West a distance of 51.30 feet; thence North 50 degrees 09 minutes 06 seconds West a distance of 256.76 feet; thence South 31 degrees 03 minutes 46 seconds West a distance of 200.22 feet to the northeasterly line of Park Street; thence North 50 degrees 19 minutes 28 seconds West, along said northeasterly line of Park Street, a distance of 159.04 feet to the intersection with a line bearing South 0 degrees 46 minutes 42 seconds West from the point of commencement; thence North 0 degrees 46 minutes 42 seconds East a distance of 641.56 feet; thence North 89 degrees 59 minutes 56 seconds East a distance of 578.94 feet to the point of beginning.

Has caused the same to be surveyed and platted as WARD PARK ADDITION and do hereby donate and dedicate to the public for public use forever the Avenue, Streets, Court and utility and drainage easements as shown on the plat. In witness whereof said City of Anoka, a Minnesota Municipal Corporation, has caused these presents to be signed by its proper officers this 8th day of April, 1987.

Signed: _____ CITY OF ANOKA, MINNESOTA
By Lorraine Hostetler its Mayor By Jerry Dulgar its Clerk

State of Minnesota
County of Anoka The foregoing instrument was acknowledged before me this 8th day of April, 1987, by LORRAINE HOSTETLER the Mayor and JERRY DULGAR the City Clerk of the City of Anoka, a Minnesota Municipal Corporation, on behalf of the corporation.

Barclay J. Cross
Notary Public, Anoka County, Minnesota
My Commission Expires Nov 29, 1991

I hereby certify that I have surveyed and platted the property described on this plat as WARD PARK ADDITION; that this plat is a correct representation of said survey; that the distances are correctly shown on said plat in feet and hundredths of a foot; that all monuments have been correctly placed in the ground as shown on said plat; that the outside boundary lines are correctly designated on said plat; and that there are no wetlands or public highways to be designated other than as shown thereon.

Raymond A. Prasch
Raymond A. Prasch, Registered Land Surveyor
Minn. Reg. No. 6743

State of Minnesota
County of Hennepin The foregoing instrument was acknowledged before me this 13th day of FEBRUARY, 1987, by Raymond A. Prasch, Registered Land Surveyor.

Milton E. Hyland
Milton E. Hyland, Notary Public, Hennepin County, Minnesota
My Commission Expires November 19, 1987

Approved by the City Council of Anoka, Minnesota this 6th day of April, 1987.

Signed Lorraine Hostetler Mayor Attest Jerry Dulgar City Clerk

Approved by the Planning Commission of the City of Anoka, Minnesota this 7th day of April, 1987.

Signed Jerome M. Cotten Chairman Attest Robert Kirchner Secretary

Checked and approved this 10th day of April, 1987.

W. J. D. [Signature]
Anoka County Surveyor

"NO DELINQUENT TAXES AND TRANSFER ENTERED"
April 9th 1987
Charles R. [Signature]
Auditor, Anoka County
BY Daniela Schult
LOT SURVEYS COMPANY, INC
LAND SURVEYOR