

WATERMARK 2ND ADDITION

KNOW ALL PERSONS BY THESE PRESENTS: That U.S. Home Corporation, a Delaware corporation, owner of the following described property:
Outlots B, C, D, and F, WATERMARK, according to the recorded plat thereof, Anoka County, Minnesota.
Has caused the same to be surveyed and platted as WATERMARK 2ND ADDITION and does hereby dedicate to the public for public use the public ways and the drainage and utility easements as shown on this plat.
In witness whereof said U.S. Home Corporation, a Delaware corporation, has caused these presents to be signed by its proper officer this 18 day of DECEMBER, 2019.

U.S. HOME CORPORATION
[Signature]
Jon Aune, Division Vice President

STATE OF Minnesota
COUNTY OF Hennepin
This instrument was acknowledged before me on December 18, 2019 by Jon Aune, Division Vice President of U.S. Home Corporation, a Delaware corporation, on behalf of the corporation.

[Signature] (Signed)
Danielle Shubshaya (Printed)
Notary Public, Hennepin County, Minnesota
My commission expires January 31, 2024

I Thomas R. Balluff do hereby certify that this plat was prepared by me or under my direct supervision; that I am a duly Licensed Land Surveyor in the State of Minnesota; that this plat is a correct representation of the boundary survey, that all mathematical data and labels are correctly designated on this plat; that all monuments depicted on this plat have been, or will be correctly set within one year; that all water boundaries and wet lands, as defined in Minnesota Statutes, Section 505.01, Subd. 3, as of the date of this certificate are shown and labeled on this plat; and all public ways are shown and labeled on this plat.
Dated this 13th day of DECEMBER, 2019.

[Signature]
Thomas R. Balluff, Licensed Land Surveyor
Minnesota License No. 40361

STATE OF Minnesota
COUNTY OF Anoka
This instrument was acknowledged before me on December 13, 2019 by Thomas R. Balluff.

[Signature] (Signed)
Cynthia J. Norical (Printed)
Notary Public, Hennepin County, Minnesota
My commission expires January 31, 2020

CITY COUNCIL, CITY OF LINO LAKES, MINNESOTA
This plat of WATERMARK 2ND ADDITION was approved and accepted by the City Council of the City of Lino Lakes, Minnesota at a regular meeting thereof held this 28 day of October, 2019, and said plat is in compliance with the provisions of Minnesota Statutes, Section 505.03, Subd. 2.

CITY COUNCIL, CITY OF LINO LAKES, MINNESOTA
By: *[Signature]* Mayor
By: *[Signature]* Clerk

COUNTY SURVEYOR
I hereby certify that, in accordance with Minnesota Statutes, Section 505.021, Subd. 11, this plat has been reviewed and approved this 20th day of December, 2019.

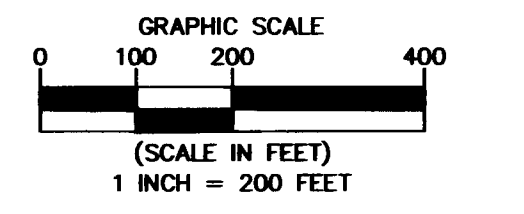
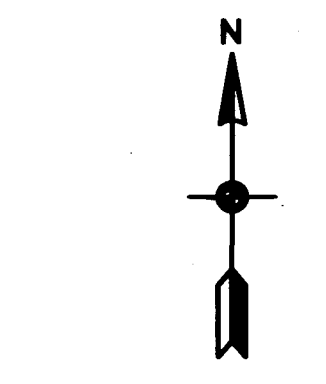
By: *[Signature]*
Charles F. Gitzen
Anoka County Surveyor

COUNTY AUDITOR/TREASURER
Pursuant to Minnesota Statutes, Section 505.021, Subd. 9, taxes payable in the year 2019 on the land hereinbefore described have been paid. Also, pursuant to Minnesota Statutes, Section 272.12, there are no delinquent taxes and transfer entered this 20 day of December, 2019.

By: *[Signature]*
Joanell M. Sawyer
Property Tax Administrator
Deputy

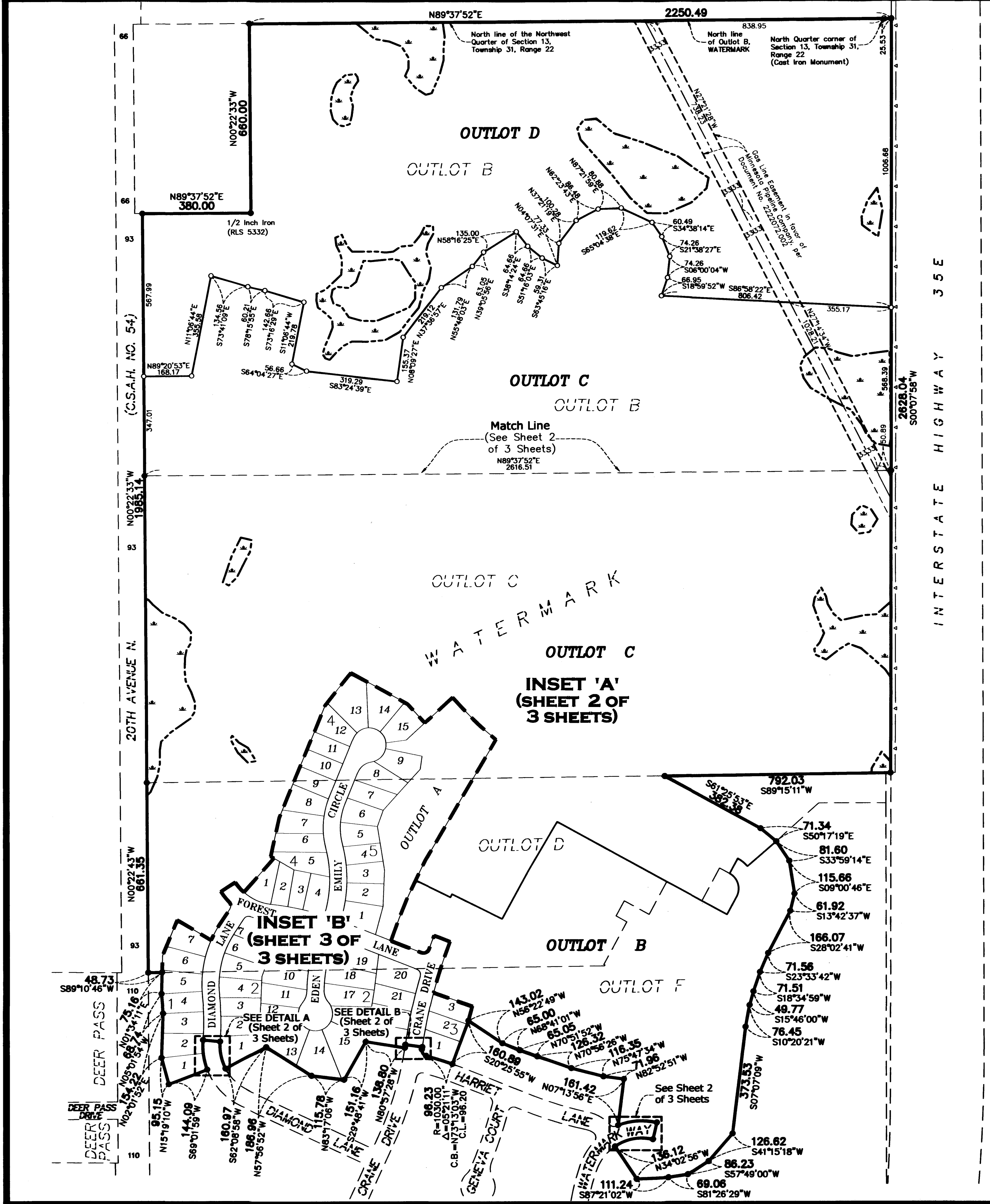
COUNTY RECORDER/REGISTRAR OF TITLES
County of Anoka, State of Minnesota
I hereby certify that this plat of WATERMARK 2ND ADDITION was filed in the office of the County Recorder/Registrar of Titles for public record on this 20 day of December, 2019, at 10:00 o'clock A.M. and was duly recorded as Document Number 2246741.001.

By: *[Signature]*
Joanell M. Sawyer
County Recorder/Registrar of Titles
Deputy



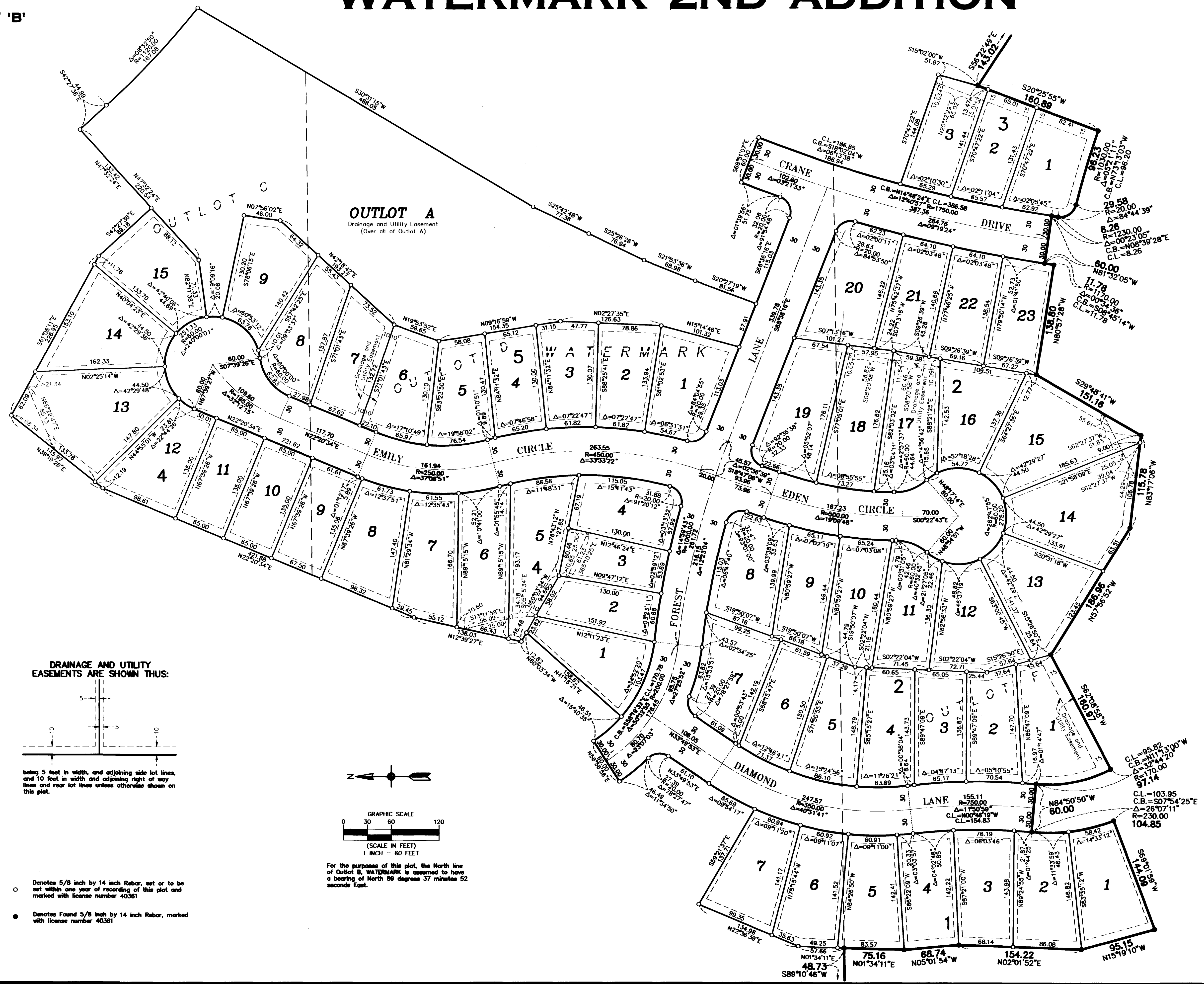
For the purposes of this plat, the North line of Outlot B, WATERMARK is assumed to have a bearing of North 89 degrees 37 minutes 52 seconds East.

- Denotes 5/8 inch by 14 inch Rebar, set or to be set within one year of recording of this plat and marked with license number 40361
- Denotes Found 5/8 inch by 14 inch Rebar marked with license number 40361, unless noted otherwise
- Denotes Found Anoka County Section Monument, as noted
- ▲— Denotes Restricted Access per Document No. 389552
- ☒ Denotes Wetland delineated by Kjelhaug Environmental Services Company in 2013



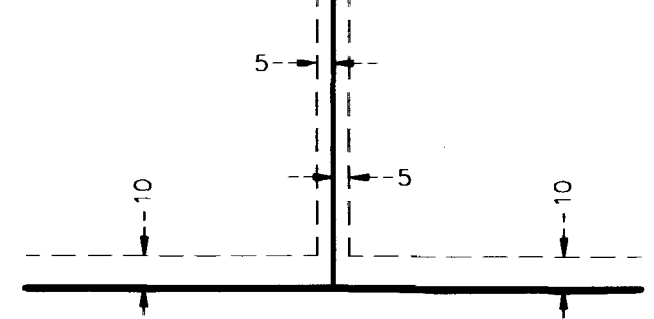
WATERMARK 2ND ADDITION

INSET 'B'

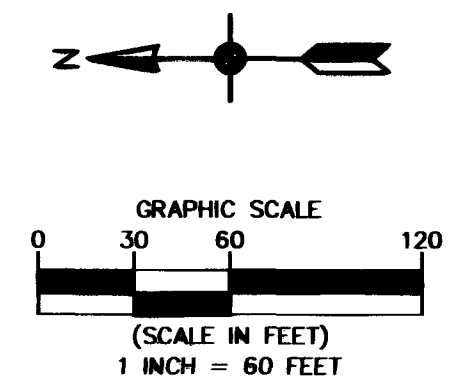


OUTLOT A
Drainage and Utility Easement
(Over all of Outlot A)

DRAINAGE AND UTILITY EASEMENTS ARE SHOWN THUS:



being 5 feet in width, and adjoining side lot lines, and 10 feet in width and adjoining right of way lines and rear lot lines unless otherwise shown on this plan.



For the purpose of this plan, the North line of Outlot B, WATERMARK, is assumed to have a bearing of North 89 degrees 37 minutes 52 seconds East.

- Denotes 5/8 inch by 14 inch Rebar, set or to be set within one year of recording of this plan and marked with license number 40361
- Denotes Found 5/8 inch by 14 inch Rebar, marked with license number 40361