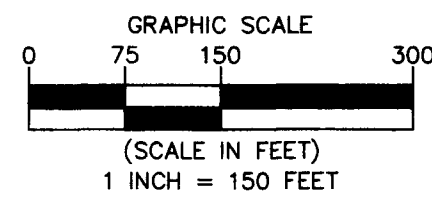
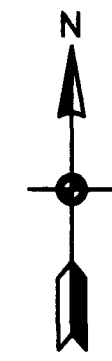


# WATERMARK 3RD ADDITION

CITY OF LINO LAKES  
COUNTY OF ANOKA  
SEC. 13, TWP. 31, RGE. 22



For the purposes of this plat, the South line of Outlot L, WATERMARK is assumed to have a bearing of South 88 degrees 57 minutes 27 seconds West.

- ◆ Denotes Found Cast Iron Right-of-Way Monument
- Denotes Found 5/8 inch by 14 inch Rebar, marked with license number 40361
- W Denotes Wetland delineated by Kjolhaug Environmental Services, Inc. in 2013

**INSET 'C'**  
(SEE SHEET 4  
OF 5 SHEETS)

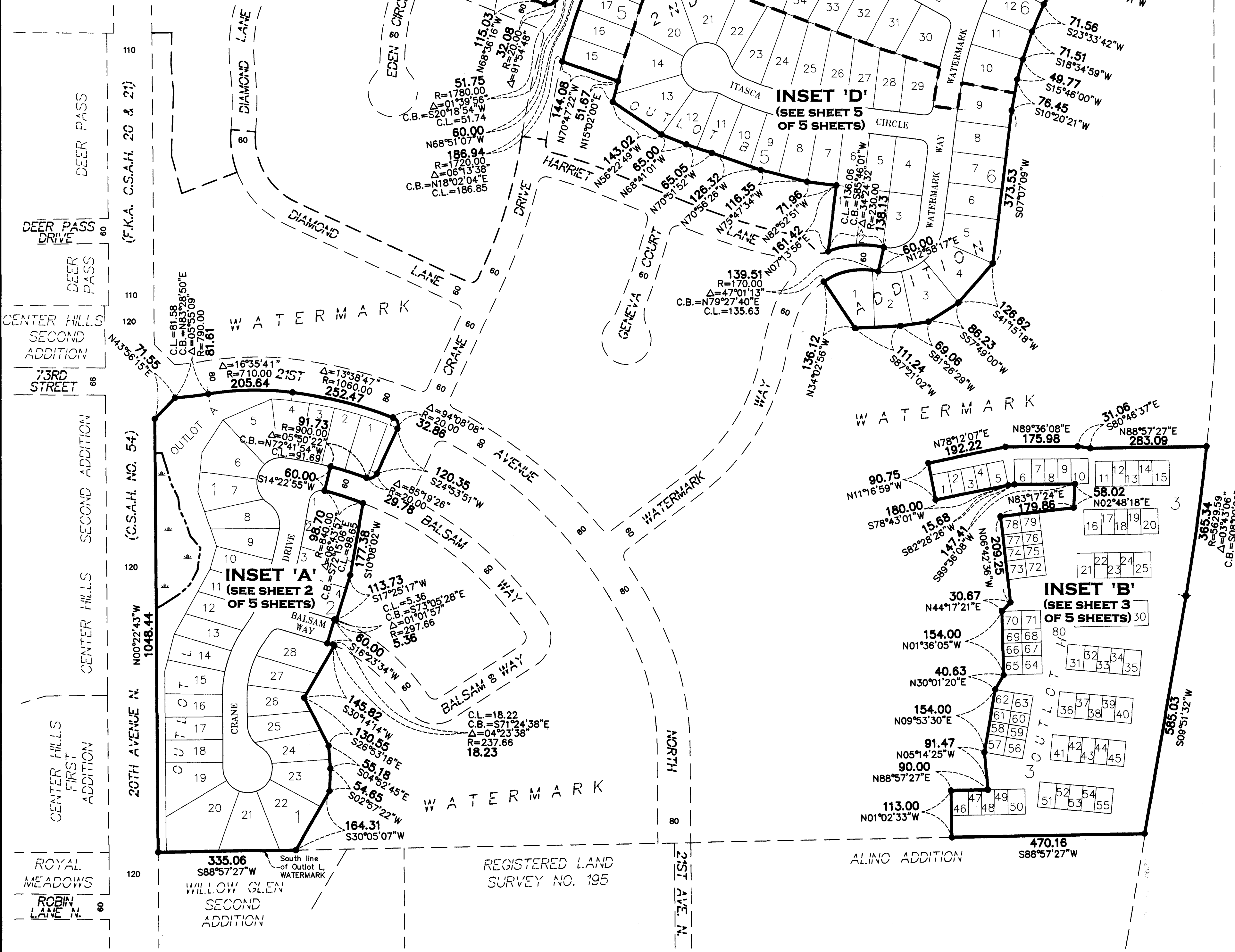
**INSET 'C'**  
(SEE SHEET 4  
OF 5 SHEETS)

**INSET 'D'**  
(SEE SHEET 5  
OF 5 SHEETS)

**INSET 'A'**  
(SEE SHEET 2  
OF 5 SHEETS)

**INSET 'B'**  
(SEE SHEET 3  
OF 5 SHEETS)

INTERSTATE HIGHWAY 356



KNOW ALL PERSONS BY THESE PRESENTS: That U.S. Home Corporation, a Delaware corporation, owner of the following described property:  
 Outlots H and L, WATERMARK, according to the recorded plat thereof, Anoka County, Minnesota.  
 AND  
 Outlot B, WATERMARK 2ND ADDITION, according to the recorded plat thereof, Anoka County, Minnesota.  
 Has caused the same to be surveyed and platted as WATERMARK 3RD ADDITION and does hereby dedicate to the public for public use the public ways and the drainage and utility easements as shown on this plat.  
 In witness whereof said U.S. Home Corporation, a Delaware corporation, has caused these presents to be signed by its proper officer this 10 day of JUNE 2020

U.S. HOME CORPORATION  
*[Signature]*  
 Jon Aune, Division Vice President

STATE OF MINNESOTA  
 COUNTY OF HENNEPIN  
 This instrument was acknowledged before me on JUNE 10, 2020 by Jon Aune, Division Vice President of U.S. Home Corporation, a Delaware corporation, on behalf of the corporation.

*[Signature]* (Signed)  
 STEVE B. ACH (Printed)  
 Notary Public,  
 My commission expires JANUARY 31, 2024

I, Thomas R. Balluff do hereby certify that this plat was prepared by me or under my direct supervision; that I am a duly Licensed Land Surveyor in the State of Minnesota; that this plat is a correct representation of the boundary survey; that all mathematical data and labels are correctly designated on this plat; that all monuments depicted on this plat have been, or will be correctly set within one year; that all water boundaries and wet lands, as defined in Minnesota Statutes, Section 505.01, Subd. 3, as of the date of this certificate are shown and labeled on this plat; and all public ways are shown and labeled on this plat.  
 Dated this 8<sup>th</sup> day of JUNE 2020

*[Signature]*  
 Thomas R. Balluff, Licensed Land Surveyor  
 Minnesota License No. 40361

STATE OF MINNESOTA  
 COUNTY OF ANOKA  
 This instrument was acknowledged before me on JUNE 8<sup>th</sup>, 2020 by Thomas R. Balluff.

*[Signature]* (Signed)  
 Cynthia J. Morical (Printed)  
 Notary Public, Hennepin County, Minnesota  
 My commission expires JANUARY 31, 2025

CITY COUNCIL, CITY OF LINO LAKES, MINNESOTA  
 This plat of WATERMARK 3RD ADDITION was approved and accepted by the City Council of the City of Lino Lakes, Minnesota at a regular meeting thereof held this 11<sup>th</sup> day of MAY 2020 and said plat is in compliance with the provisions of Minnesota Statutes, Section 505.03, Subd. 2.

CITY COUNCIL, CITY OF LINO LAKES, MINNESOTA  
 By: *[Signature]* Mayor  
 By: *[Signature]* Clerk

COUNTY SURVEYOR  
 I hereby certify that in accordance with Minnesota Statutes, Section 505.021, Subd. 11, this plat has been reviewed and approved this 27<sup>th</sup> day of JULY 2020.

*[Signature]*  
 Charles F. Gitzgen  
 Anoka County Surveyor

COUNTY AUDITOR/TREASURER  
 Pursuant to Minnesota Statutes, Section 505.021, Subd. 9, taxes payable in the year 2020 on the land hereinbefore described have been paid. Also, pursuant to Minnesota Statutes, Section 272.12, there are no delinquent taxes and transfer entered this 27 day of JULY 2020.

*[Signature]*  
 Pamela J LeBlanc  
 Property Tax Administrator  
 By: *[Signature]* Deputy

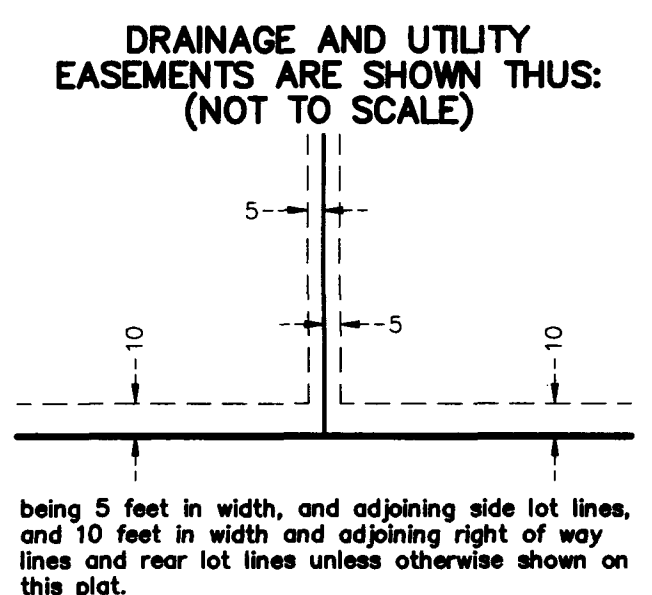
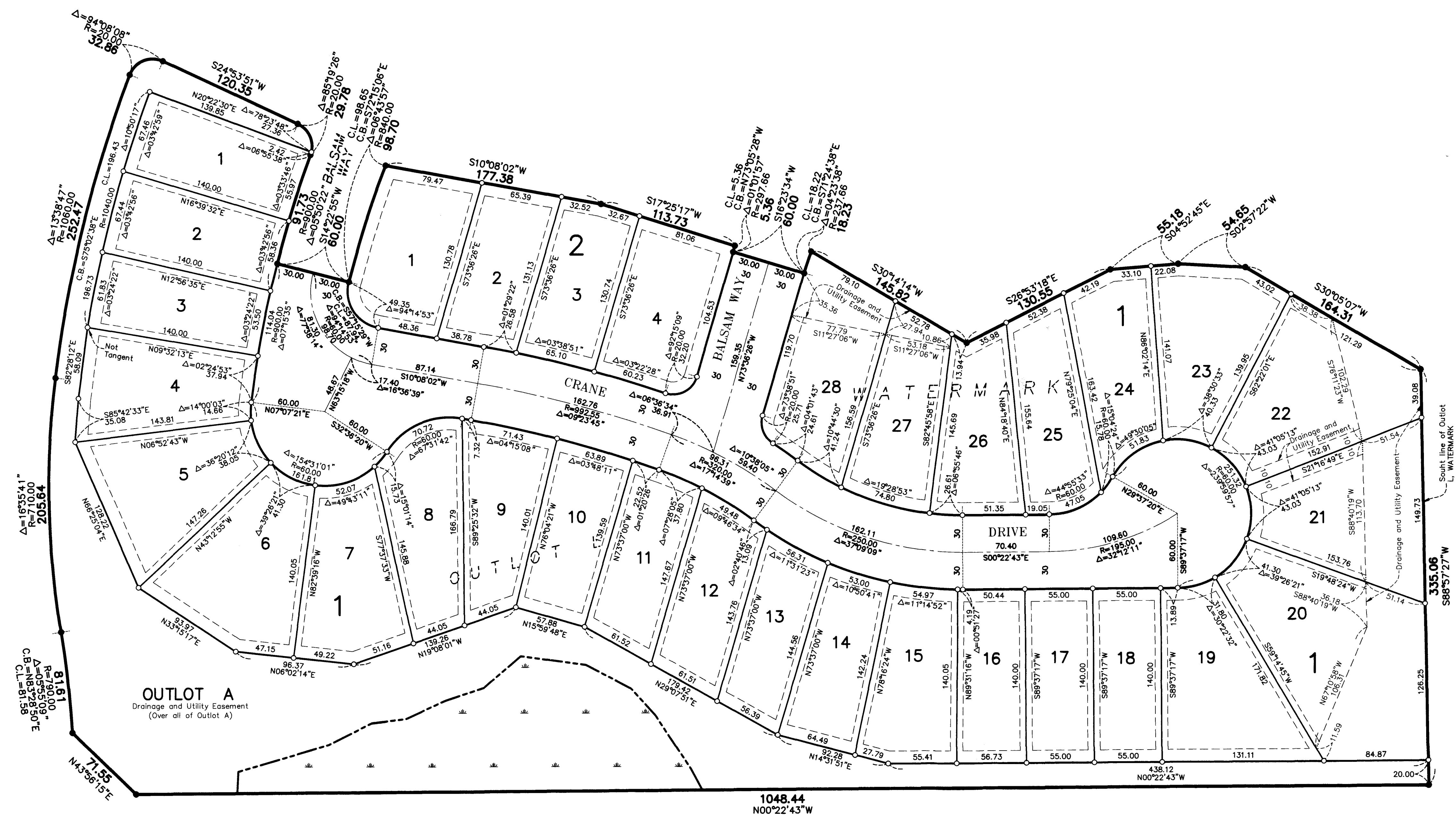
COUNTY RECORDER/REGISTRAR OF TITLES  
 County of Anoka, State of Minnesota  
 I hereby certify that this plat of WATERMARK 3RD ADDITION was filed in the office of the County Recorder/Registrar of Titles for public record on this 27 day of JULY 2020 at 11:36 o'clock P.M. and was duly recorded as Document Number 2271323.001

*[Signature]*  
 Pamela J LeBlanc  
 County Recorder/Registrar of Titles  
 By: *[Signature]* Deputy

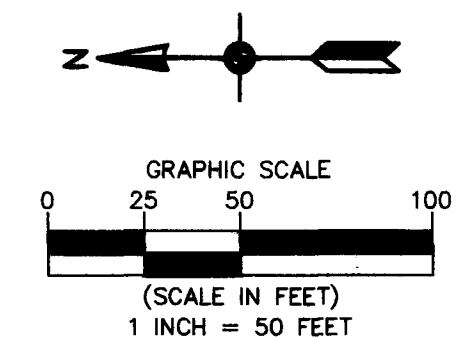


INSET 'A'

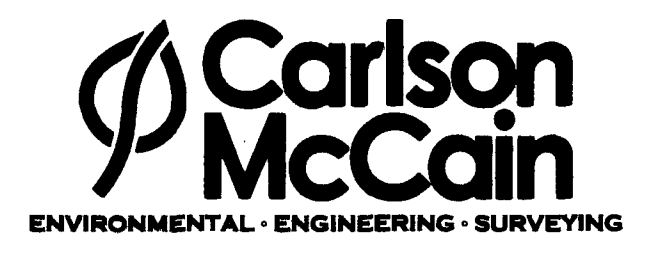
# WATERMARK 3RD ADDITION



- Denotes 5/8 inch by 14 inch Rebar, set or to be set within one year of recording of this plat and marked with license number 40361
- Denotes Found 5/8 inch by 14 inch Rebar, marked with license number 40361
- ▭ Denotes Wetland delineated by Kjölnhaug Environmental Services, Inc. in 2013

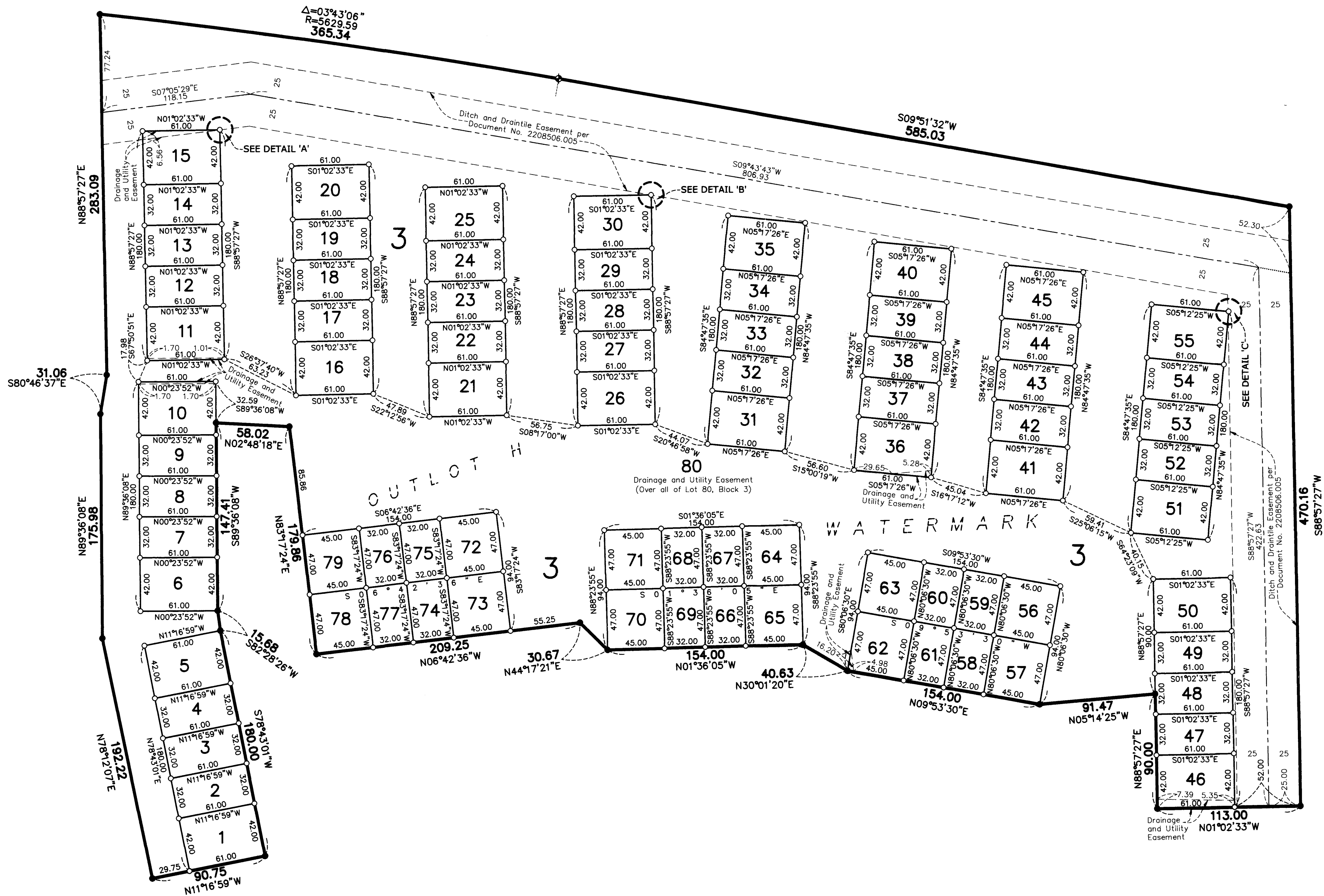
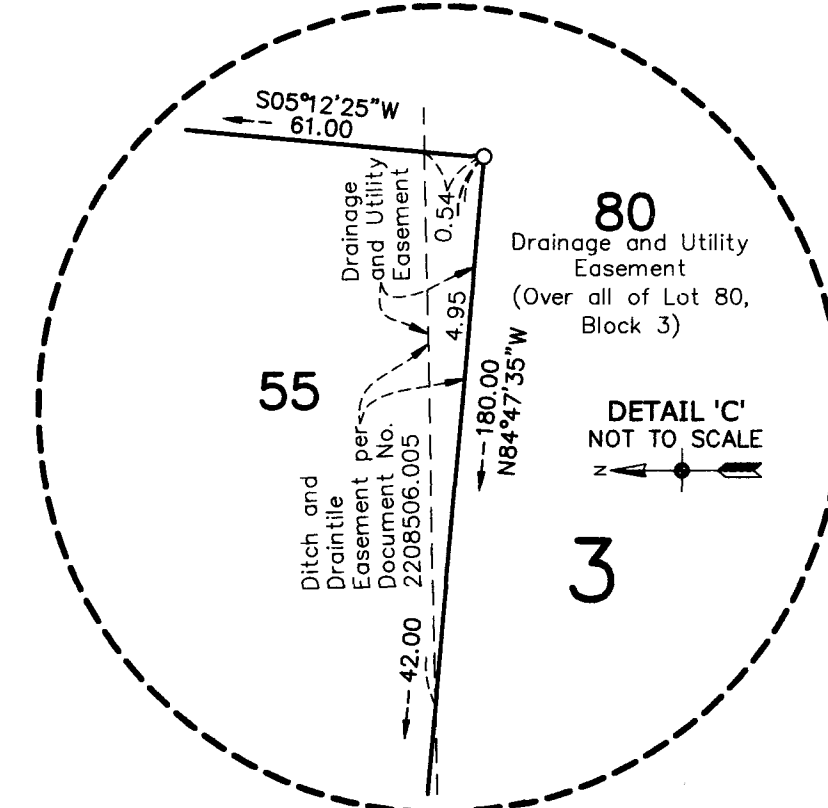
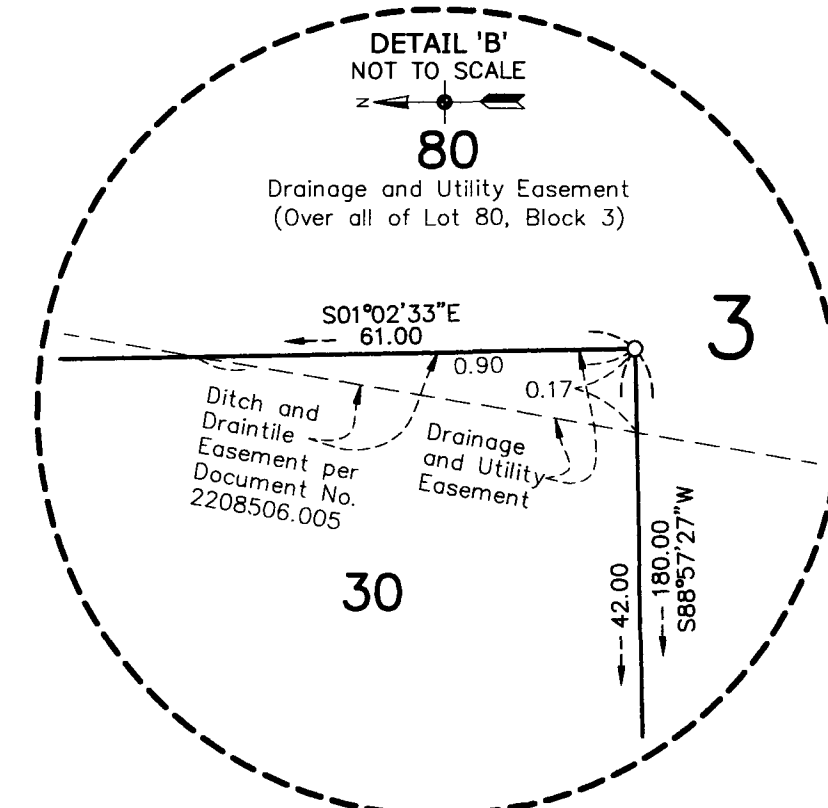
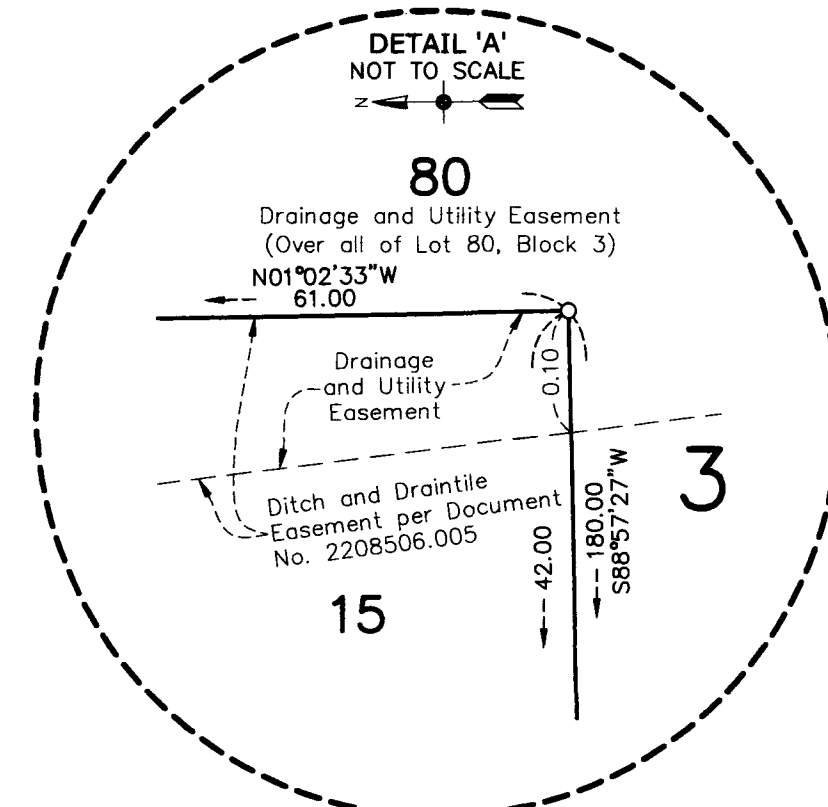


For the purposes of this plat, the South line of Outlot L WATERMARK is assumed to have a bearing of South 88 degrees 57 minutes 27 seconds West.



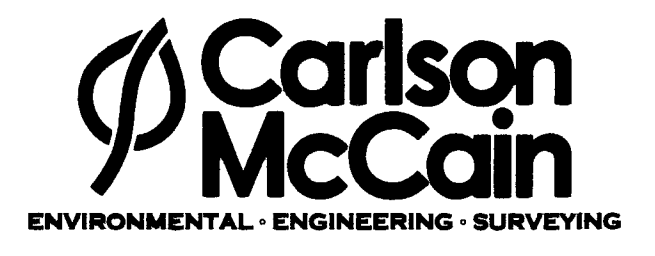
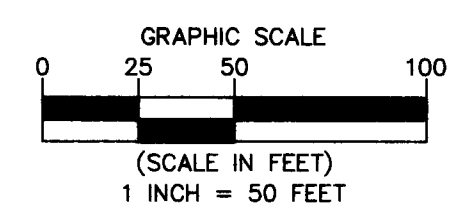
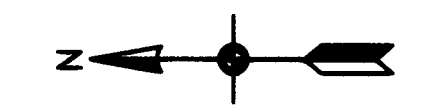
# WATERMARK 3RD ADDITION

## INSET 'B'



- ◆ Denotes Found Cast Iron Right-of-Way Monument
- Denotes 5/8 inch by 14 inch Rebar, set or to be set within one year of recording of this plat and marked with license number 40361
- Denotes Found 5/8 inch by 14 inch Rebar, marked with license number 40361

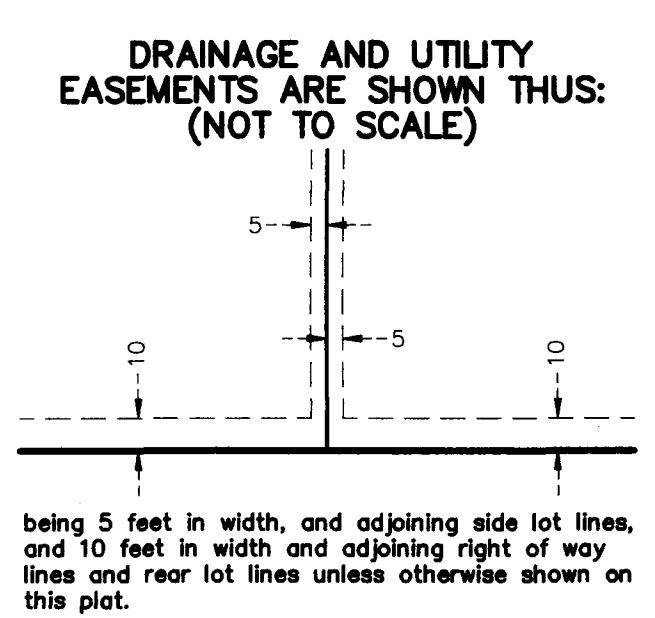
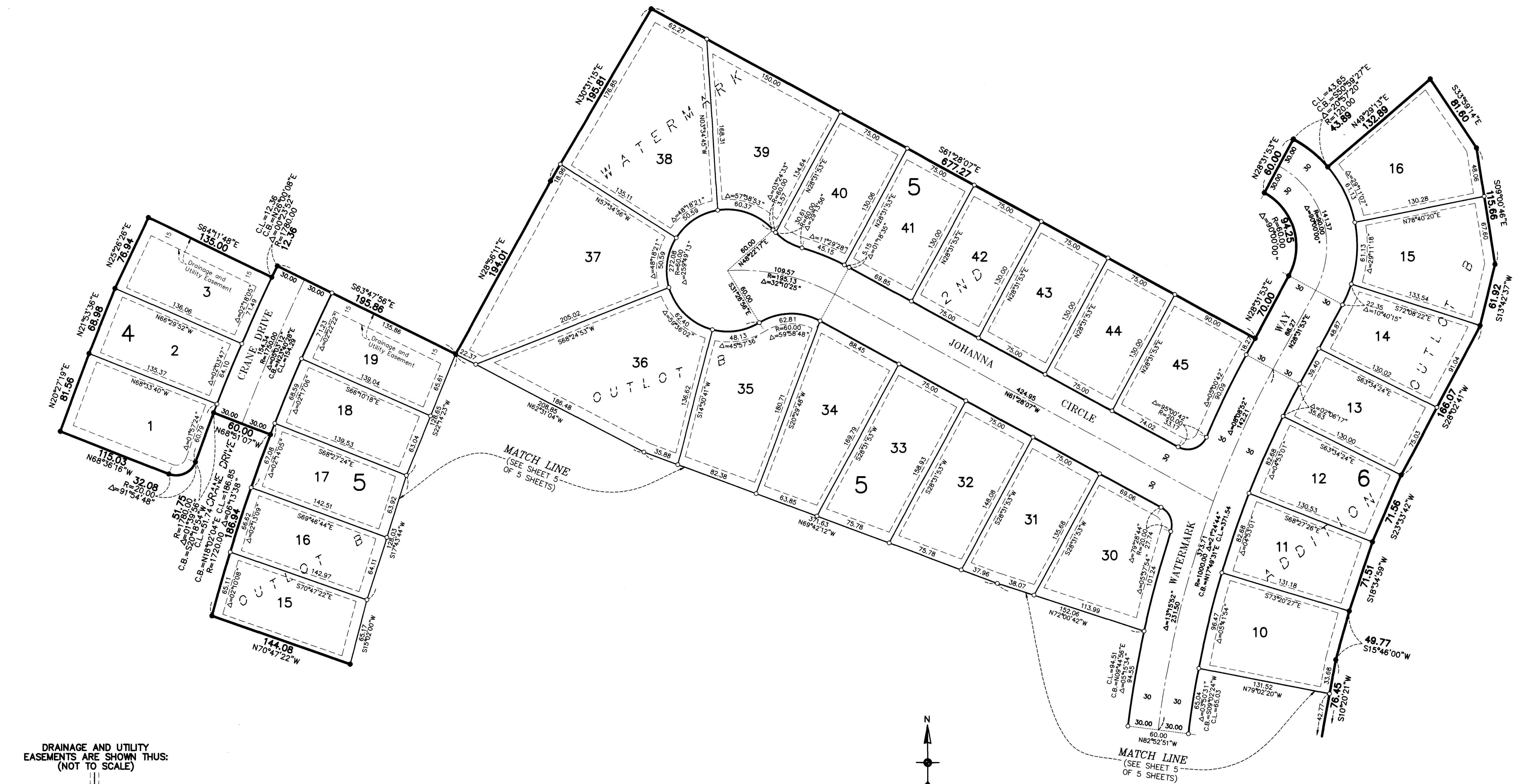
For the purposes of this plat, the South line of Outlot L, WATERMARK is assumed to have a bearing of South 88 degrees 57 minutes 27 seconds West.



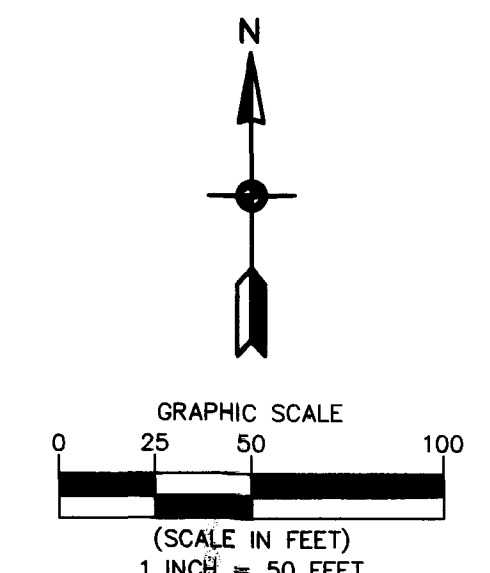
# WATERMARK 3RD ADDITION

CITY OF LINO LAKES  
COUNTY OF ANOKA  
SEC. 13, TWP. 31, RGE. 22

### INSET 'C'



- Denotes 5/8 inch by 14 inch Rebar, set or to be set within one year of recording of this plat and marked with license number 40361
- Denotes Found 5/8 inch by 14 inch Rebar, marked with license number 40361

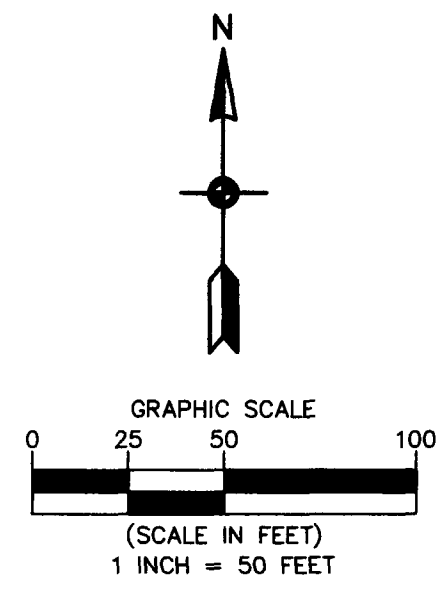
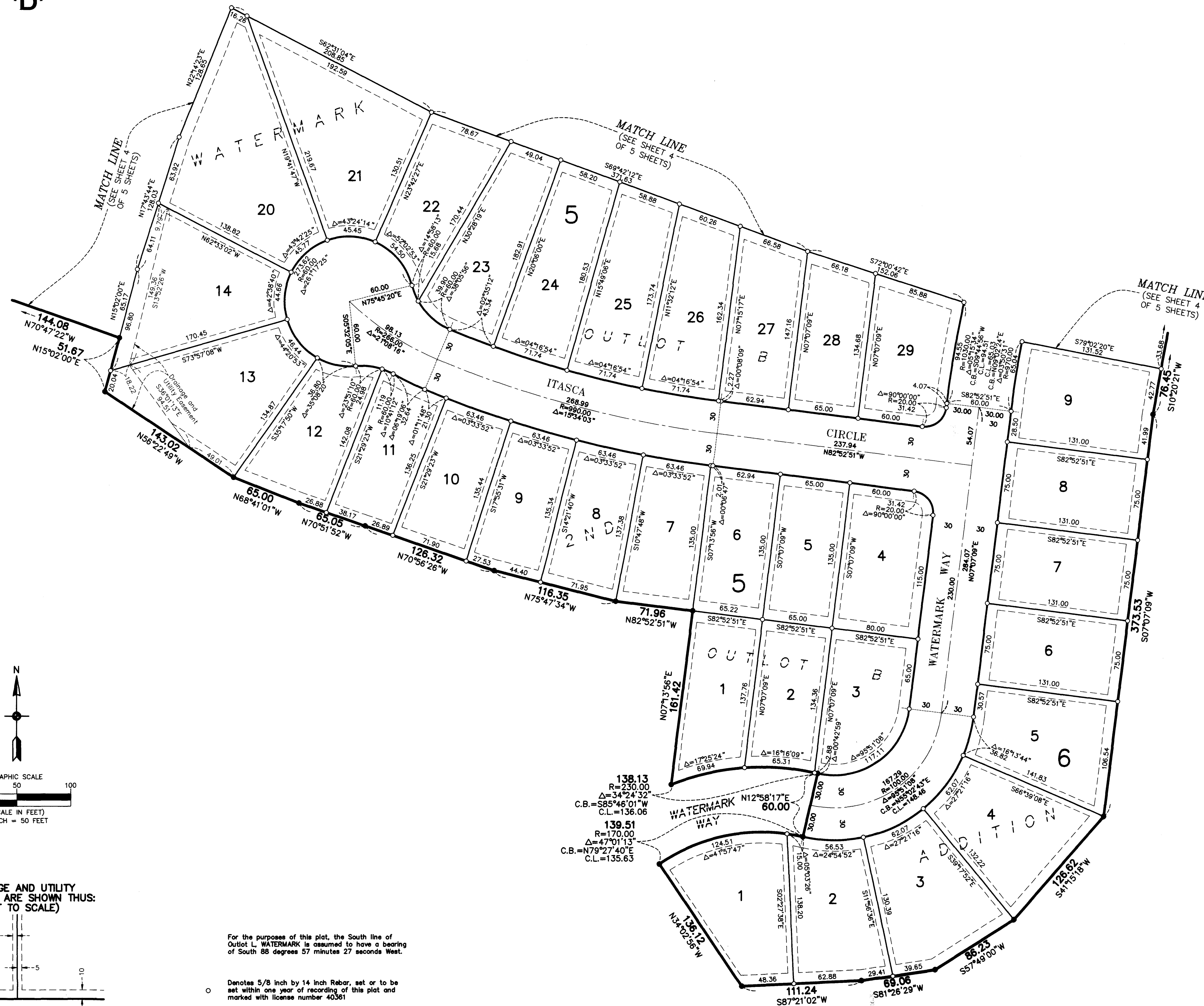


For the purposes of this plat, the South line of Outlot L, WATERMARK is assumed to have a bearing of South 88 degrees 57 minutes 27 seconds West.

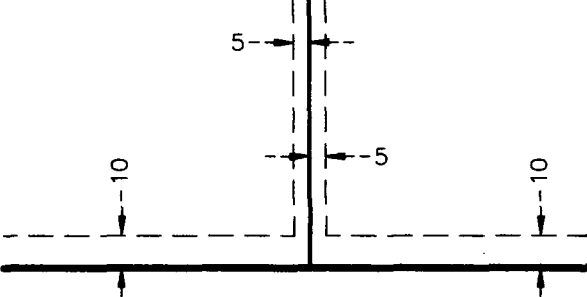
# WATERMARK 3RD ADDITION

CITY OF LINO LAKES  
COUNTY OF ANOKA  
SEC. 13, TWP. 31, RGE. 22

INSET 'D'



DRAINAGE AND UTILITY EASEMENTS ARE SHOWN THUS: (NOT TO SCALE)



being 5 feet in width, and adjoining side lot lines, and 10 feet in width and adjoining right of way lines and rear lot lines unless otherwise shown on this plat.

For the purposes of this plat, the South line of Outlot L, WATERMARK is assumed to have a bearing of South 88 degrees 57 minutes 27 seconds West.

- Denotes 5/8 inch by 14 inch Rebar, set or to be set within one year of recording of this plat and marked with license number 40361
- Denotes Found 5/8 inch by 14 inch Rebar, marked with license number 40361

