

WATERMARK 4TH ADDITION

CITY OF LINO LAKES
COUNTY OF ANOKA
SEC. 13, TWP. 31, RGE. 22

KNOW ALL PERSONS BY THESE PRESENTS: That U.S. Home Corporation, a Delaware corporation, owner of the following described property:
Outlot C, WATERMARK 2ND ADDITION, according to the recorded plat thereof, Anoka County, Minnesota.
Has caused the same to be surveyed and platted as WATERMARK 4TH ADDITION and does hereby dedicate to the public for public use the public ways and the drainage and utility easements as shown on this plat.
In witness whereof said U.S. Home Corporation, a Delaware corporation, has caused these presents to be signed by its proper officer this 20 day of MAY, 2021.

STATE of Minnesota
COUNTY of Anoka
This instrument was acknowledged before me on April 19, 2021 by Thomas R. Balluff.

Kelly Frette (Signed)
Kelly Frette (Printed)
Notary Public, State of Minnesota
My commission expires January 31, 2025

U.S. HOME CORPORATION
[Signature]
Jon Aune, Division Vice President
STATE of Minnesota
COUNTY of Hennepin
This instrument was acknowledged before me on May 20, 2021 by Jon Aune, Division Vice President of U.S. Home Corporation, a Delaware corporation, on behalf of the corporation.

[Signature] (Signed)
Charles Toohay (Printed)
Notary Public, Hennepin county
My commission expires Jan 31 2022

CITY COUNCIL, CITY OF LINO LAKES, MINNESOTA
This plat of WATERMARK 4TH ADDITION was approved and accepted by the City Council of the City of Lino Lakes, Minnesota at a regular meeting thereof held this 18th day of April, 2021, and said plat is in compliance with the provisions of Minnesota Statutes, Section 505.03, Subd. 2.

CITY COUNCIL, CITY OF LINO LAKES, MINNESOTA
By: [Signature] Mayor
[Signature] Clerk

COUNTY SURVEYOR
I hereby certify that in accordance with Minnesota Statutes, Section 505.021, Subd. 11, this plat has been reviewed and approved this 25th day of August, 2021.

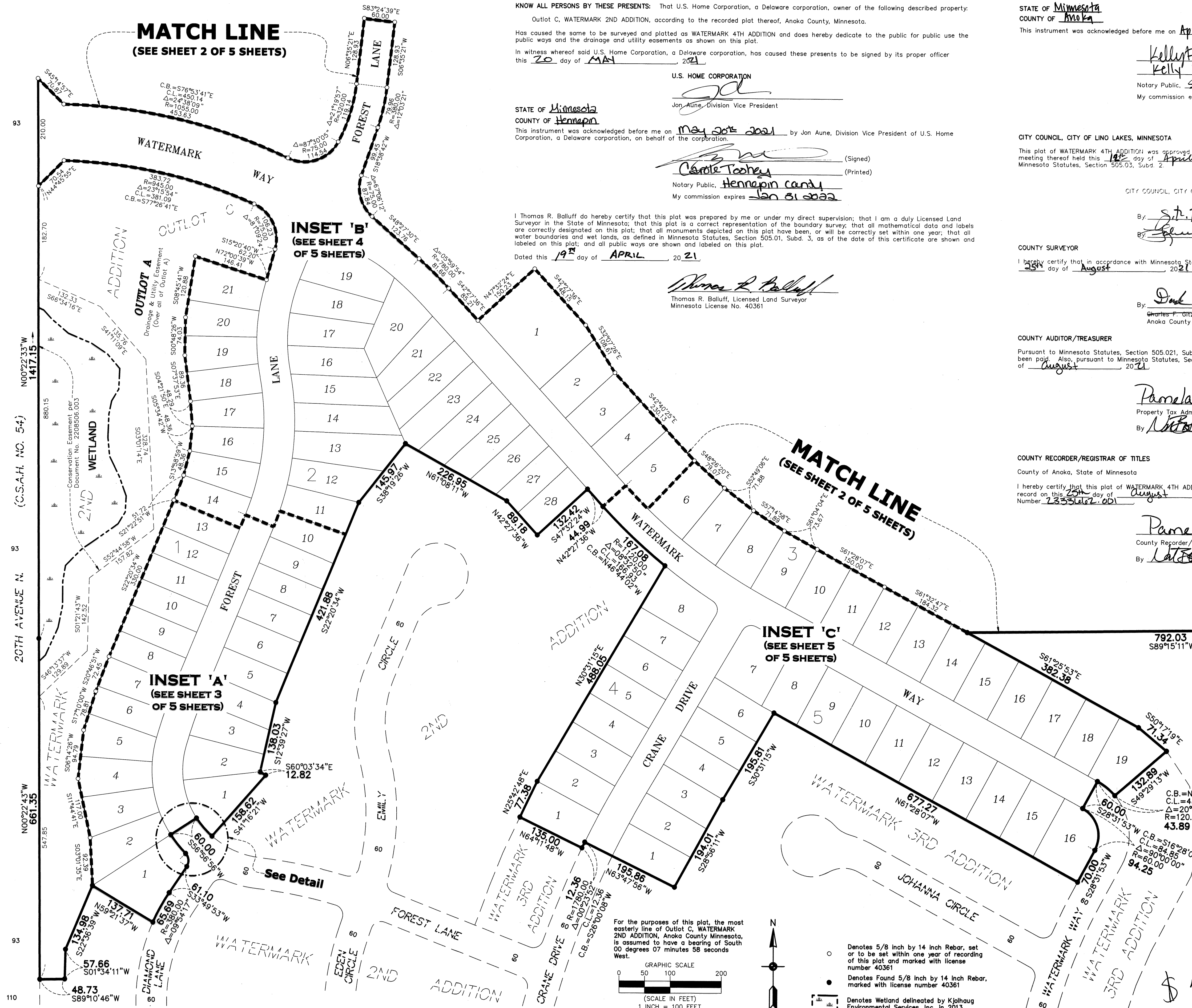
By: [Signature]
David A. Ziegler
Anoka County Surveyor

COUNTY AUDITOR/TREASURER
Pursuant to Minnesota Statutes, Section 505.021, Subd. 9, taxes payable in the year 2021 on the land hereinbefore described have been paid. Also, pursuant to Minnesota Statutes, Section 272.12, there are no delinquent taxes and transfer entered this 25th day of August, 2021.

Pamela J LeBlanc
Property Tax Administrator
By: [Signature] Deputy

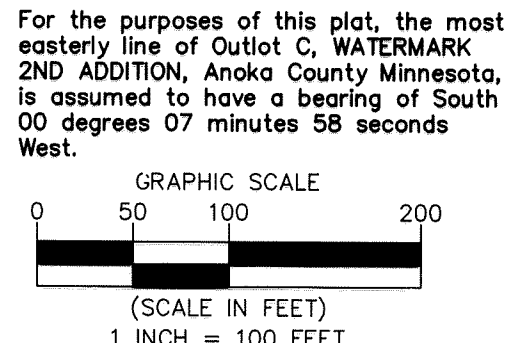
COUNTY RECORDER/REGISTRAR OF TITLES
County of Anoka, State of Minnesota
I hereby certify that this plat of WATERMARK 4TH ADDITION was filed in the office of the County Recorder/Registrar of Titles for public record on this 25th day of August, 2021 at 2:00 o'clock P.M. and was duly recorded as Document Number 2333662.001.

Pamela J LeBlanc
County Recorder/Registrar of Titles
By: [Signature] Deputy

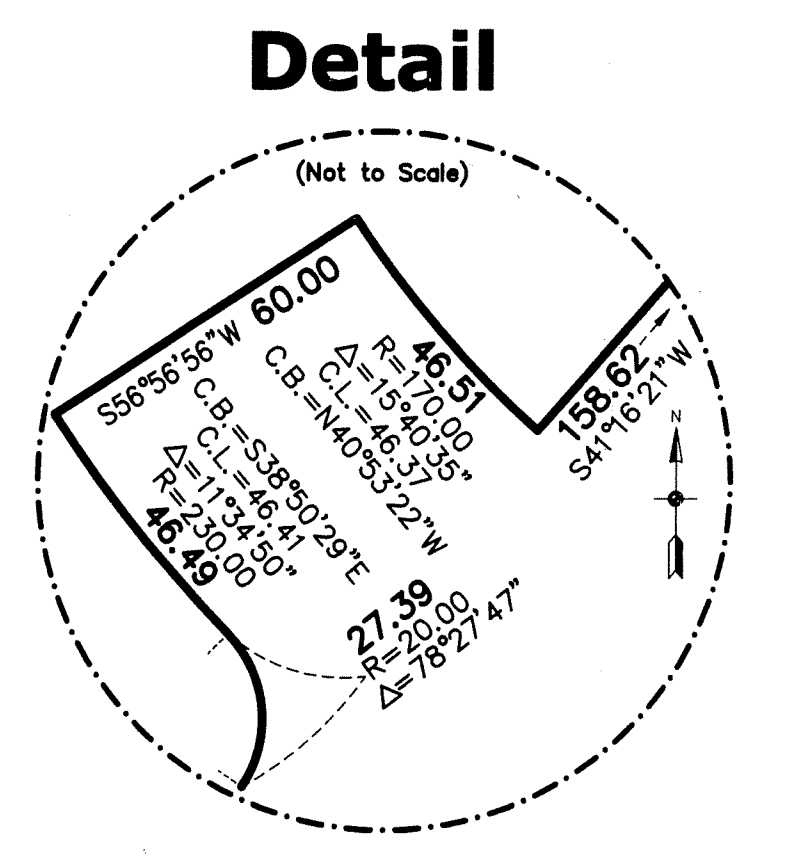


I, Thomas R. Balluff do hereby certify that this plat was prepared by me or under my direct supervision; that I am a duly Licensed Land Surveyor in the State of Minnesota; that this plat is a correct representation of the boundary survey; that all mathematical data and labels are correctly designated on this plat; that all monuments depicted on this plat have been, or will be correctly set within one year, that all water boundaries and wet lands, as defined in Minnesota Statutes, Section 505.01, Subd. 3, as of the date of this certificate are shown and labeled on this plat; and all public ways are shown and labeled on this plat.

Dated this 19th day of APRIL, 2021
[Signature]
Thomas R. Balluff, Licensed Land Surveyor
Minnesota License No. 40361



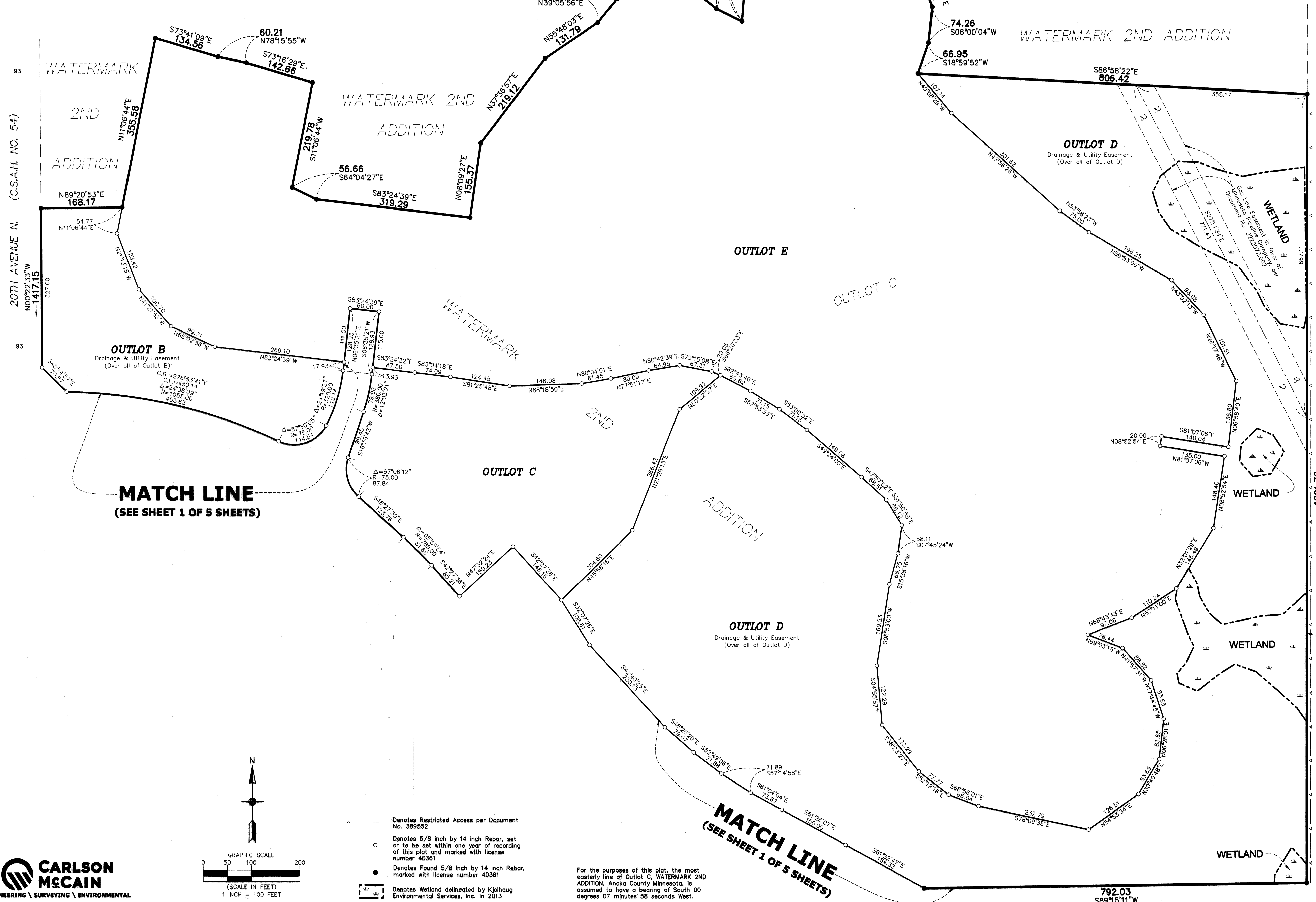
- Denotes 5/8 inch by 14 inch Rebar, set or to be set within one year of recording of this plat and marked with license number 40361
- Denotes Found 5/8 inch by 14 inch Rebar, marked with license number 40361
- Denotes Wetland delineated by Kjalhaug Environmental Services, Inc. in 2013



\$ 56.00

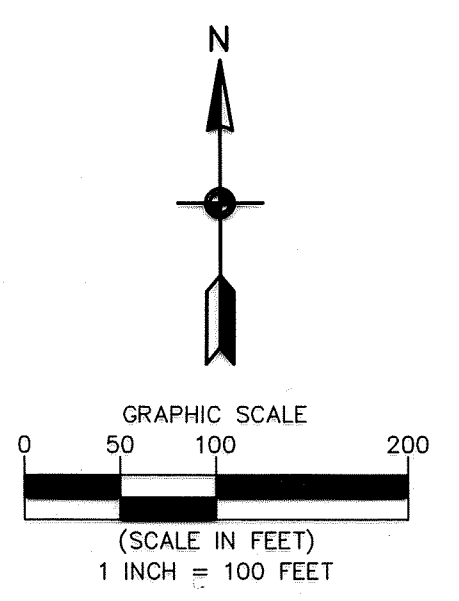


WATERMARK 4TH ADDITION



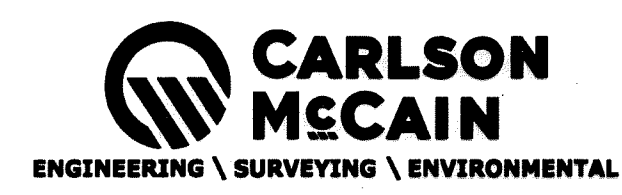
MATCH LINE
(SEE SHEET 1 OF 5 SHEETS)

MATCH LINE
(SEE SHEET 1 OF 5 SHEETS)



- △ Denotes Restricted Access per Document No. 389552
- Denotes 5/8 inch by 14 inch Rebar, set or to be set within one year of recording of this plat and marked with license number 40361
- Denotes Found 5/8 inch by 14 inch Rebar, marked with license number 40361
- ▭ Denotes Wetland delineated by Kjolhaug Environmental Services, Inc. in 2013

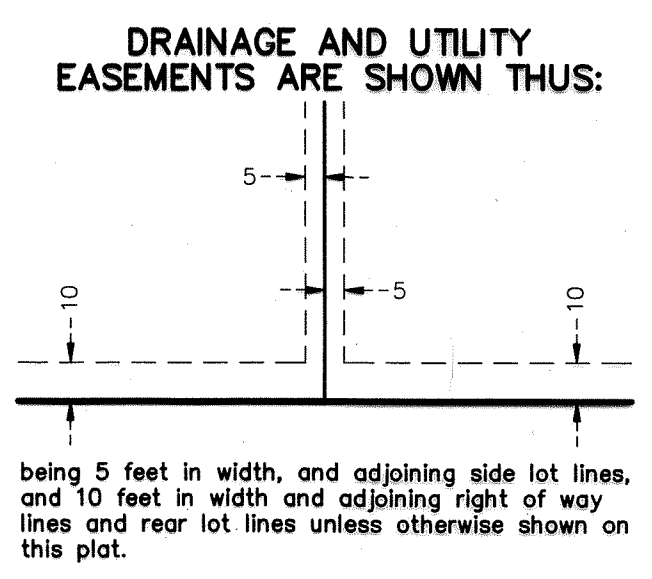
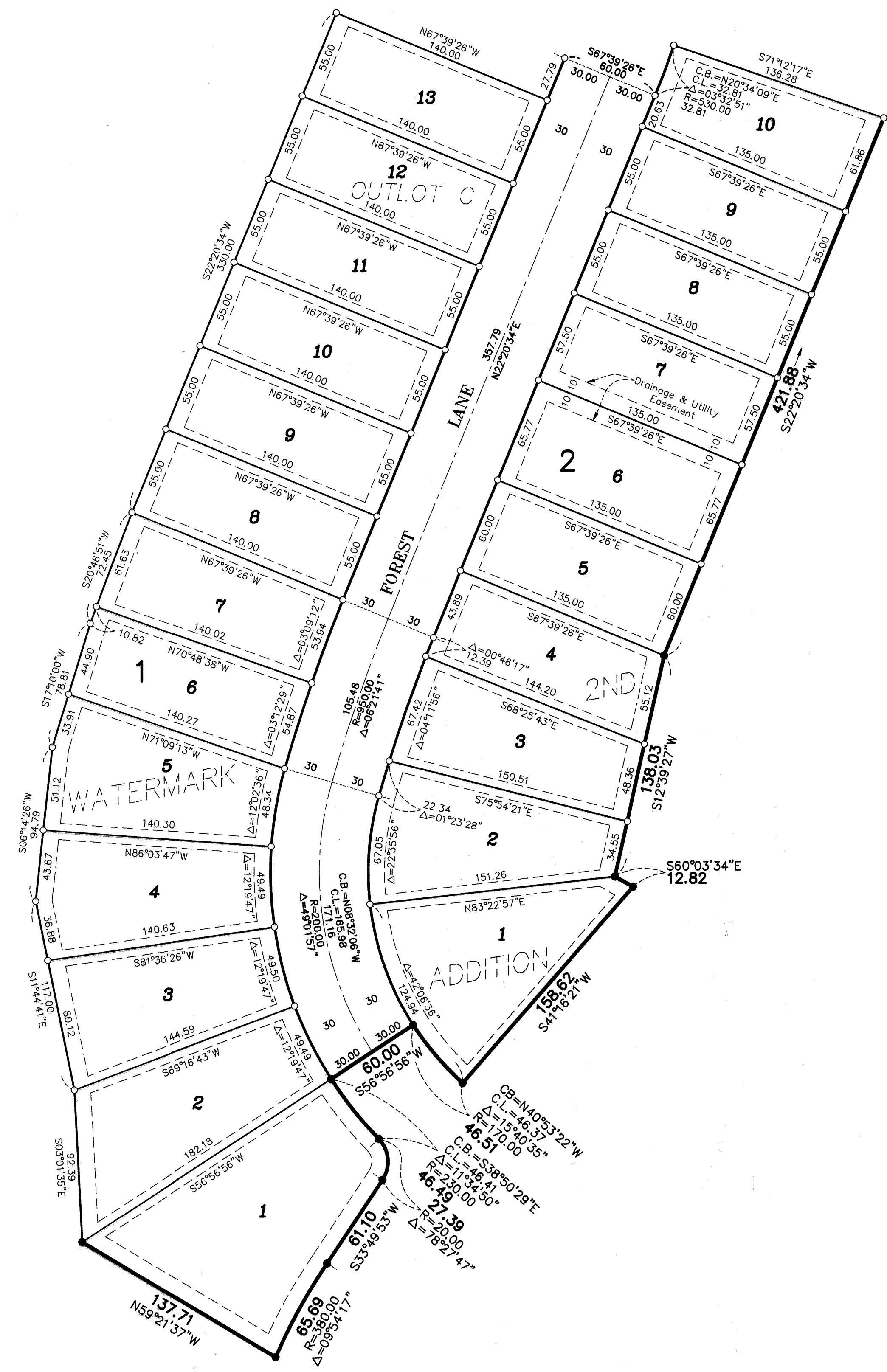
For the purposes of this plat, the most easterly line of Outlot C, WATERMARK 2ND ADDITION, Anoka County Minnesota, is assumed to have a bearing of South 00 degrees 07 minutes 58 seconds West.



INTERSTATE HIGHWAY 35E

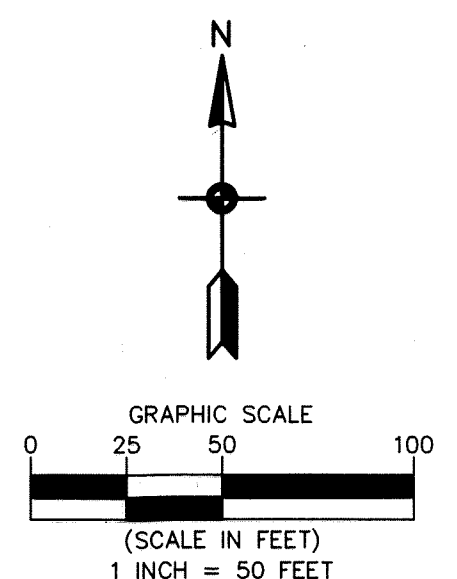
INSET A

WATERMARK 4TH ADDITION



For the purposes of this plat, the most easterly line of Outlot C, WATERMARK 2ND ADDITION, Anoka County Minnesota, is assumed to have a bearing of South 00 degrees 07 minutes 58 seconds West.

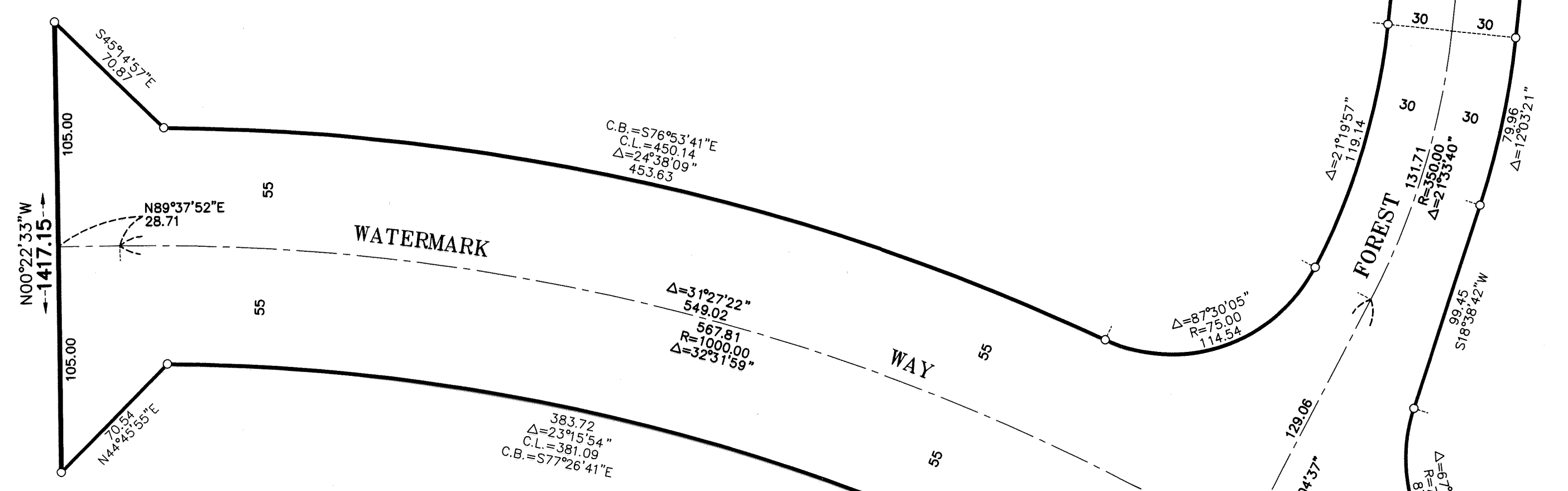
- Denotes 5/8 inch by 14 inch Rebar, set or to be set within one year of recording of this plat and marked with license number 40361
- Denotes Found 5/8 inch by 14 inch Rebar, marked with license number 40361



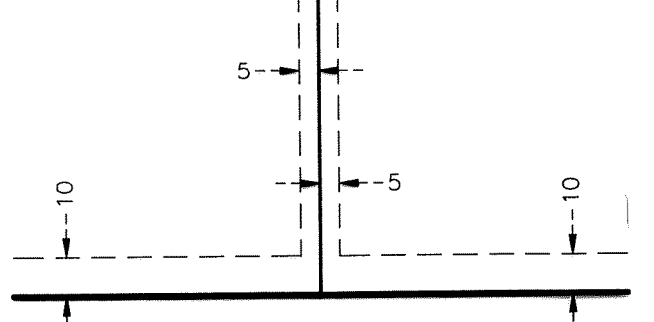
OFFICIAL PLAN

WATERMARK 4TH ADDITION

INSET B



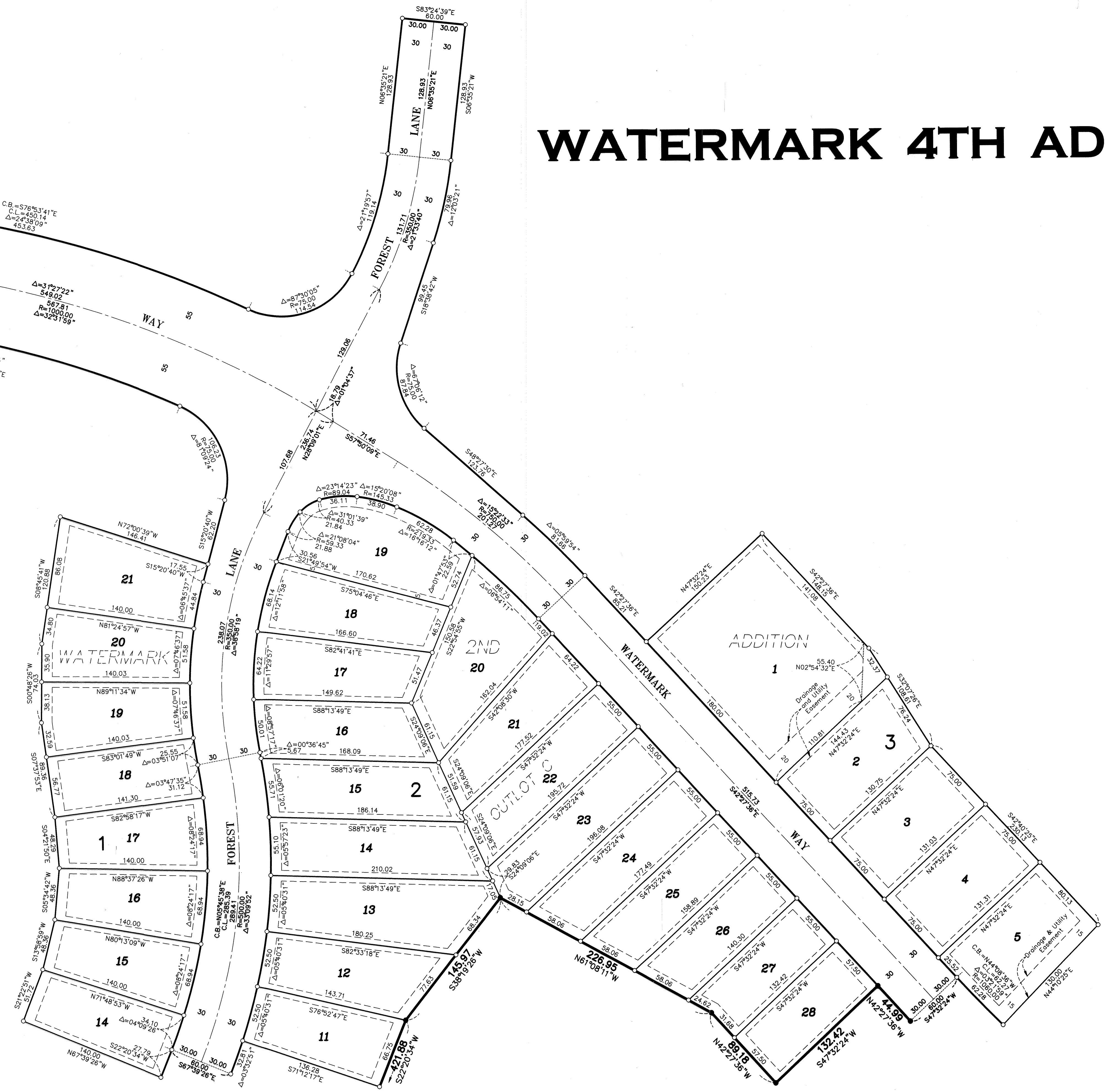
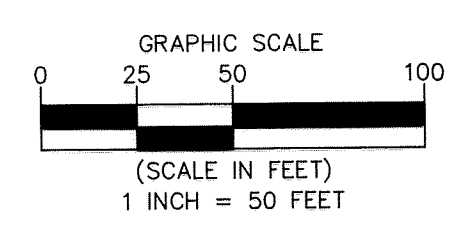
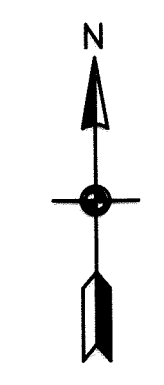
DRAINAGE AND UTILITY EASEMENTS ARE SHOWN THUS:



being 5 feet in width, and adjoining side lot lines, and 10 feet in width and adjoining right of way lines and rear lot lines unless otherwise shown on this plat.

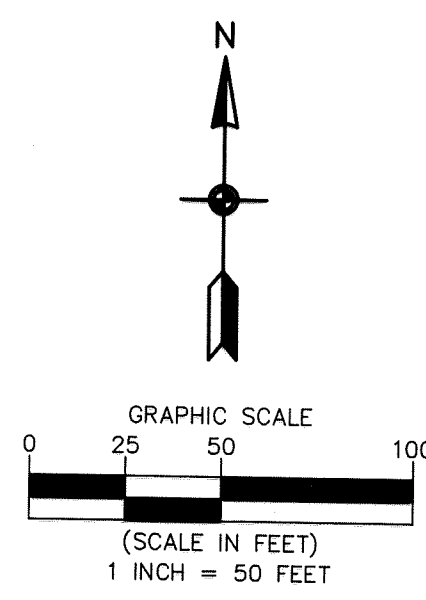
- Denotes 5/8 inch by 14 inch Rebar, set or to be set within one year of recording of this plat and marked with license number 40361
- Denotes Found 5/8 inch by 14 inch Rebar, marked with license number 40361

For the purposes of this plat, the most easterly line of Outlet C, WATERMARK 2ND ADDITION, Anoka County Minnesota, is assumed to have a bearing of South 00 degrees 07 minutes 58 seconds West.

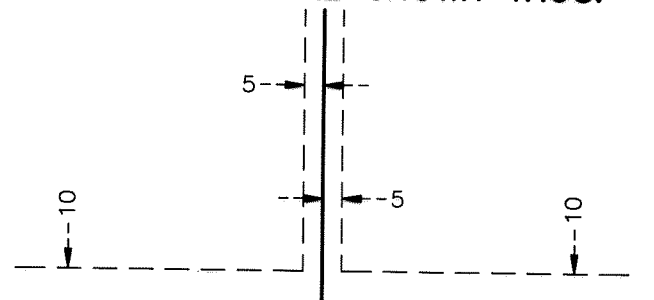


INSET C

WATERMARK 4TH ADDITION



DRAINAGE AND UTILITY EASEMENTS ARE SHOWN THUS:



being 5 feet in width, and adjoining side lot lines, and 10 feet in width and adjoining right of way lines and rear lot lines unless otherwise shown on this plat.

For the purposes of this plat, the most easterly line of Outlot C, WATERMARK 2ND ADDITION, Anoka County Minnesota, is assumed to have a bearing of South 00 degrees 07 minutes 58 seconds West.

- Denotes 5/8 inch by 14 inch Rebar, set or to be set within one year of recording of this plat and marked with license number 40361
- Denotes Found 5/8 inch by 14 inch Rebar, marked with license number 40361