

# WATERMARK 6TH ADDITION

CITY OF LINO LAKES  
COUNTY OF ANOKA  
SECTIONS 12 & 13, TWP. 31, RGE. 22

KNOW ALL PERSONS BY THESE PRESENTS: That U.S. Home, LLC, a Delaware limited liability company, owner of the following described property:

Outlot A, WATERMARK, Anoka County, Minnesota

AND

Outlot B, WATERMARK 5TH ADDITION, Anoka County, Minnesota

Has caused the same to be surveyed and platted as WATERMARK 6TH ADDITION and does hereby dedicate to the public for public use the public ways and the drainage and utility easements as shown on this plat. Also dedicating to the County of Anoka the right of access onto County State Aid Highway No. 54 as shown on this plat.

In witness whereof said U.S. Home, LLC, a Delaware limited liability company, has caused these presents to be signed by its proper officer this 12 day of October, 2023.

U.S. HOME, LLC

*[Signature]*  
Jon Aune, Senior Vice President

STATE OF Minnesota  
COUNTY OF Hennepin

This instrument was acknowledged before me on October 13, 2023 by Jon Aune, Senior Vice President of U.S. Home, LLC, a Delaware limited liability company, on behalf of the company.

*[Signature]*  
Carly Jean Rastler  
Notary Public, Hennepin County, Minnesota  
My commission expires January 31, 2027

I, Thomas R. Balluff do hereby certify that this plat was prepared by me or under my direct supervision; that I am a duly Licensed Land Surveyor in the State of Minnesota; that this plat is a correct representation of the boundary survey; that all mathematical data and labels are correctly designated on this plat; that all monuments depicted on this plat have been, or will be correctly set within one year; that all water boundaries and wet lands, as defined in Minnesota Statutes, Section 505.01, Subd. 3, as of the date of this certificate are shown and labeled on this plat; and all public ways are shown and labeled on this plat.

Dated this 9<sup>th</sup> day of October, 2023

*[Signature]*  
Thomas R. Balluff, Licensed Land Surveyor  
Minnesota License No. 40361

STATE OF Minnesota  
COUNTY OF Anoka

This instrument was acknowledged before me on October 9, 2023 by Thomas R. Balluff.

*[Signature]*  
Cynthia J. Morica  
Notary Public, Hennepin County, Minnesota  
My commission expires January 31, 2025

CITY COUNCIL, CITY OF LINO LAKES, MINNESOTA

This plat of WATERMARK 6TH ADDITION was approved and accepted by the City Council of the City of Lino Lakes, Minnesota at a regular meeting thereof held this 24 day of July, 2023, and said plat is in compliance with the provisions of Minnesota Statutes, Section 505.03, Subd. 2.

CITY COUNCIL, CITY OF LINO LAKES, MINNESOTA

By: *[Signature]* Mayor  
By: *[Signature]* Clerk

COUNTY SURVEYOR

I hereby certify that in accordance with Minnesota Statutes, Section 505.021, Subd. 11, this plat has been reviewed and approved this 25<sup>th</sup> day of October, 2023.

By: *[Signature]*  
David M. Ziegler  
Anoka County Surveyor

COUNTY AUDITOR/TREASURER

Pursuant to Minnesota Statutes, Section 505.021, Subd. 9, taxes payable in the year 2023 on the land hereinbefore described have been paid. Also, pursuant to Minnesota Statutes, Section 272.12, there are no delinquent taxes and transfer entered this 25 day of October, 2023.

*[Signature]*  
Pamela J. Lablanc  
Property Tax Administrator  
By: *[Signature]* Deputy

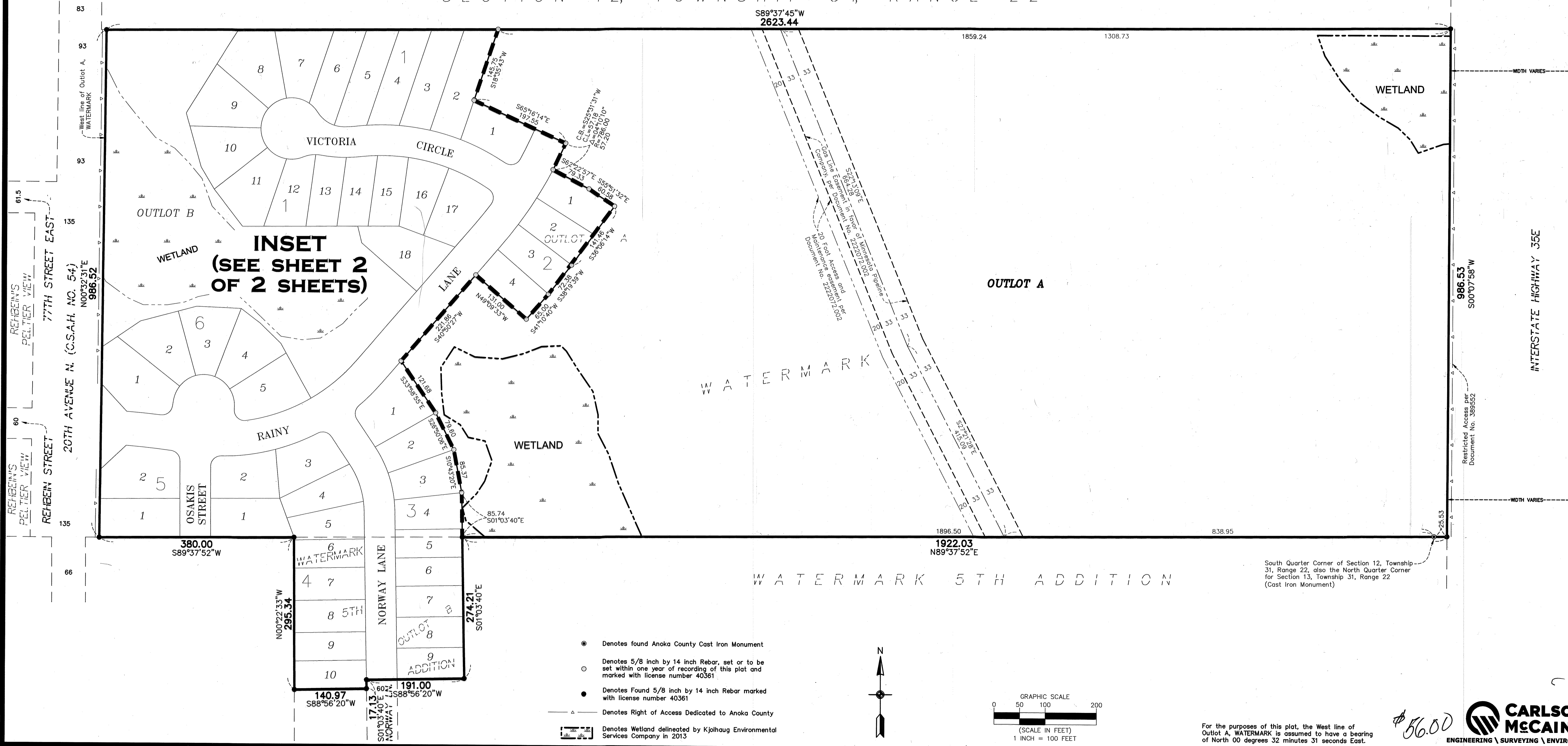
COUNTY RECORDER/REGISTRAR OF TITLES

County of Anoka, State of Minnesota

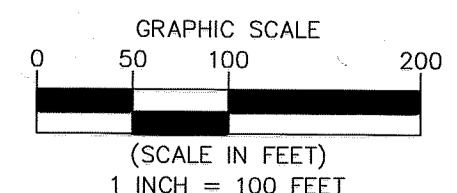
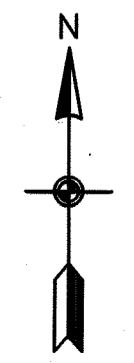
I hereby certify that this plat of WATERMARK 6TH ADDITION was filed in the office of the County Recorder/Registrar of Titles for public record on this 10 day of October, 2023, at 11:22 o'clock A.M. and was duly recorded as Document Number 401558-003.

*[Signature]*  
Pamela J. Lablanc  
County Recorder/Registrar of Titles  
By: *[Signature]* Deputy

SECTION 12, TOWNSHIP 31, RANGE 22



- Denotes found Anoka County Cast Iron Monument
- Denotes 5/8 inch by 14 inch Rebar, set or to be set within one year of recording of this plat and marked with license number 40361
- Denotes Found 5/8 inch by 14 inch Rebar marked with license number 40361
- ▲— Denotes Right of Access Dedicated to Anoka County
- ▲— Denotes Wetland delineated by Kjolhaug Environmental Services Company in 2013



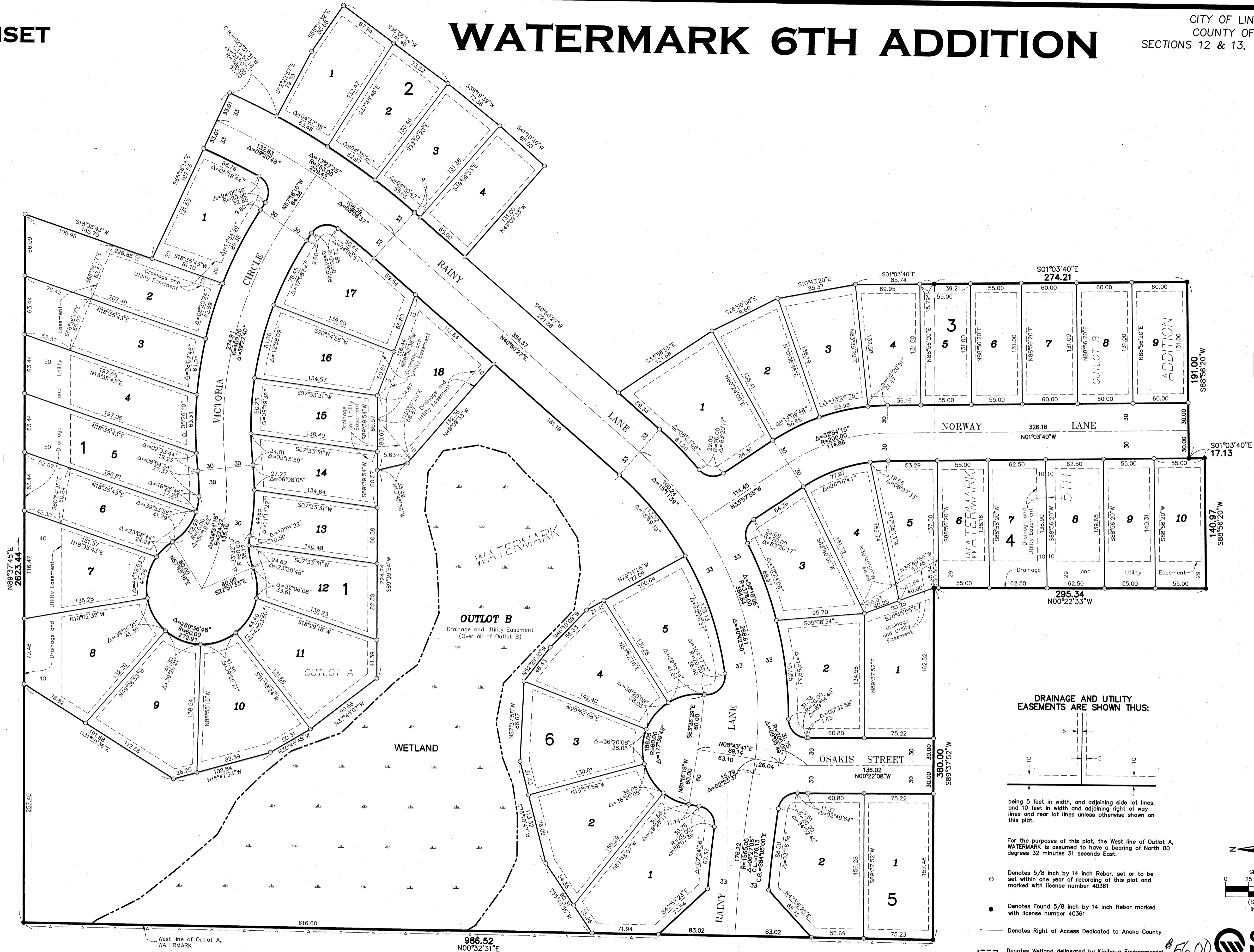
South Quarter Corner of Section 12, Township 31, Range 22, also the North Quarter Corner for Section 13, Township 31, Range 22 (Cast Iron Monument)

\$56.00

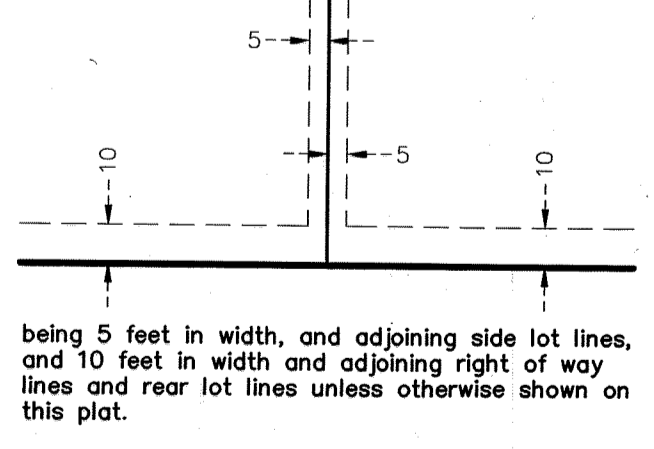


INSET

# WATERMARK 6TH ADDITION



DRAINAGE AND UTILITY EASEMENTS ARE SHOWN THUS:



being 5 feet in width, and adjoining side lot lines, and 10 feet in width and adjoining right of way lines and rear lot lines unless otherwise shown on this plat.

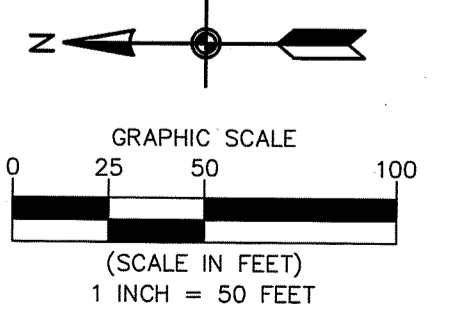
For the purposes of this plat, the West line of Outlot A, WATERMARK is assumed to have a bearing of North 00 degrees 32 minutes 31 seconds East.

○ Denotes 5/8 inch by 14 inch Rebar, set or to be set within one year of recording of this plat and marked with license number 40361

● Denotes Found 5/8 inch by 14 inch Rebar marked with license number 40361

△ Denotes Right of Access Dedicated to Anoka County

■ Denotes Wetland delineated by Kjolhaug Environmental Services Company in 2013



\$56.00