

WATERS EDGE AT CLUB WEST

CITY OF BLAINE
 COUNTY OF ANOKA
 SEC. 17, TWP. 31, RNG. 23
 Book 22 Torrens Page 1

KNOW ALL PERSONS BY THESE PRESENTS: That DK Resource Group CW L.L.C., a Minnesota limited liability company, owner of the following described property:

Lot 1, Block 1 and Outlot A, all in CLUB WEST FIFTEENTH ADDITION, Anoka County, Minnesota.

Has caused the same to be surveyed and platted as WATERS EDGE AT CLUB WEST and does hereby dedicate to the public for public use the drainage and utility easements as shown on this plat.

In witness whereof said DK Resource Group CW L.L.C., a Minnesota limited liability company, has caused these presents to be signed by its proper officer this 24th day of SEPTEMBER, 2013.

DK RESOURCE GROUP CW L.L.C.

Dean A. Klein, Chief Manager

STATE OF MINNESOTA
 COUNTY OF ANOKA

This instrument was acknowledged before me this 24th day of SEPTEMBER, 2013 by Dean A. Klein, Chief Manager of DK Resource Group CW L.L.C., a Minnesota limited liability company.

Jeffrey S. Johnson
 Notary Public, RAMSEY County, Minnesota
 My Commission Expires JANUARY 31, 2016

CITY COUNCIL, CITY OF BLAINE, MINNESOTA

This plat of WATERS EDGE AT CLUB WEST was approved and accepted by the City Council of the City of Blaine, Minnesota at a regular meeting thereof held this 11th day of July, 2013, and said plat is in compliance with the provisions of Minnesota Statutes, Section, 505.03, Subd. 2.

CITY COUNCIL, CITY OF BLAINE, MINNESOTA

By: [Signature] Mayor

By: [Signature] Clerk

COUNTY SURVEYOR

I hereby certify that in accordance with Minnesota Statutes, Section 505.021, Subd. 11, this plat has been reviewed and approved this 26th day of September, 2013.

By: [Signature] for Larry D. Holm
 Larry D. Holm
 Anoka County Surveyor

I Eric R. Vickaryous do hereby certify that this plat was prepared by me or under my direct supervision; that I am a duly Licensed Land Surveyor in the State of Minnesota; that this plat is a correct representation of the boundary survey; that all mathematical data and labels are correctly designated on this plat; that all monuments depicted on this plat have been, or will be correctly set within one year; that all water boundaries and wet lands, as defined in Minnesota Statutes, Section 505.01, Subd. 3, as of the date of this certificate are shown and labeled on this plat; and all public ways are shown and labeled on this plat.

Dated this 24th day of Sept., 2013.

[Signature]
 Eric R. Vickaryous, Licensed Land Surveyor
 Minnesota License Number 44125

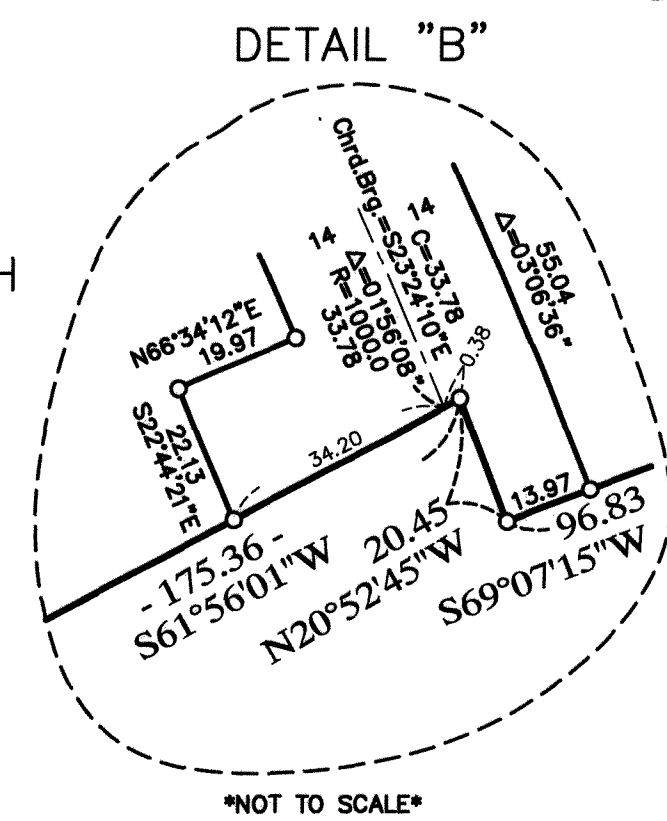
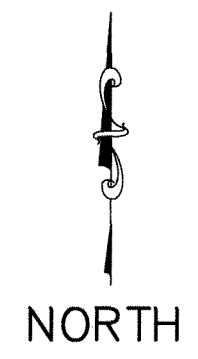
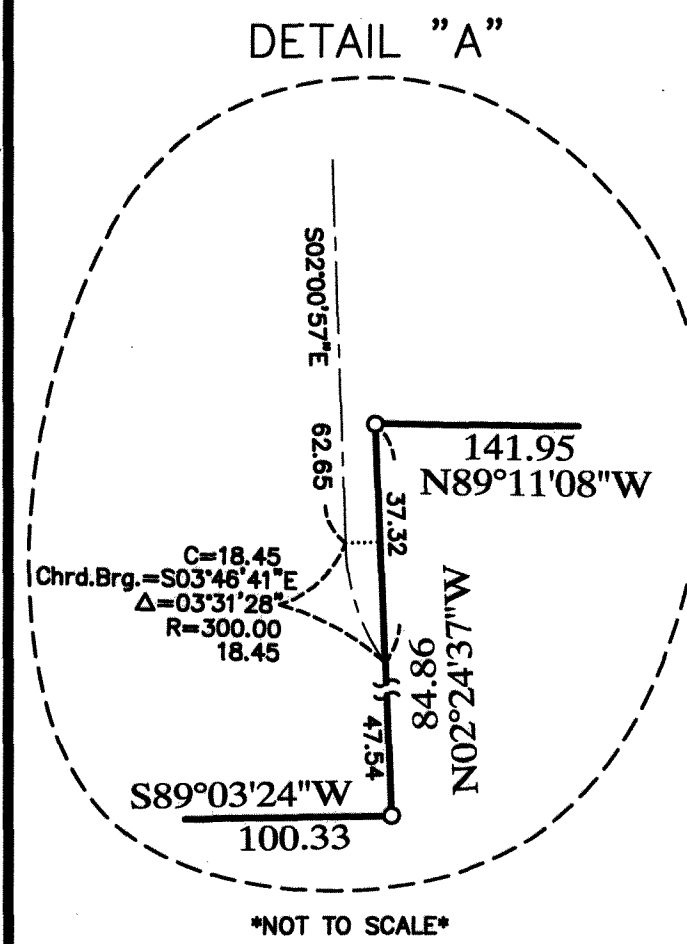
STATE OF MINNESOTA
 COUNTY OF Anoka

This instrument was acknowledged before me this 24 day of Sept, 2013 by Eric R. Vickaryous.

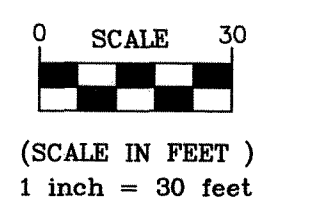
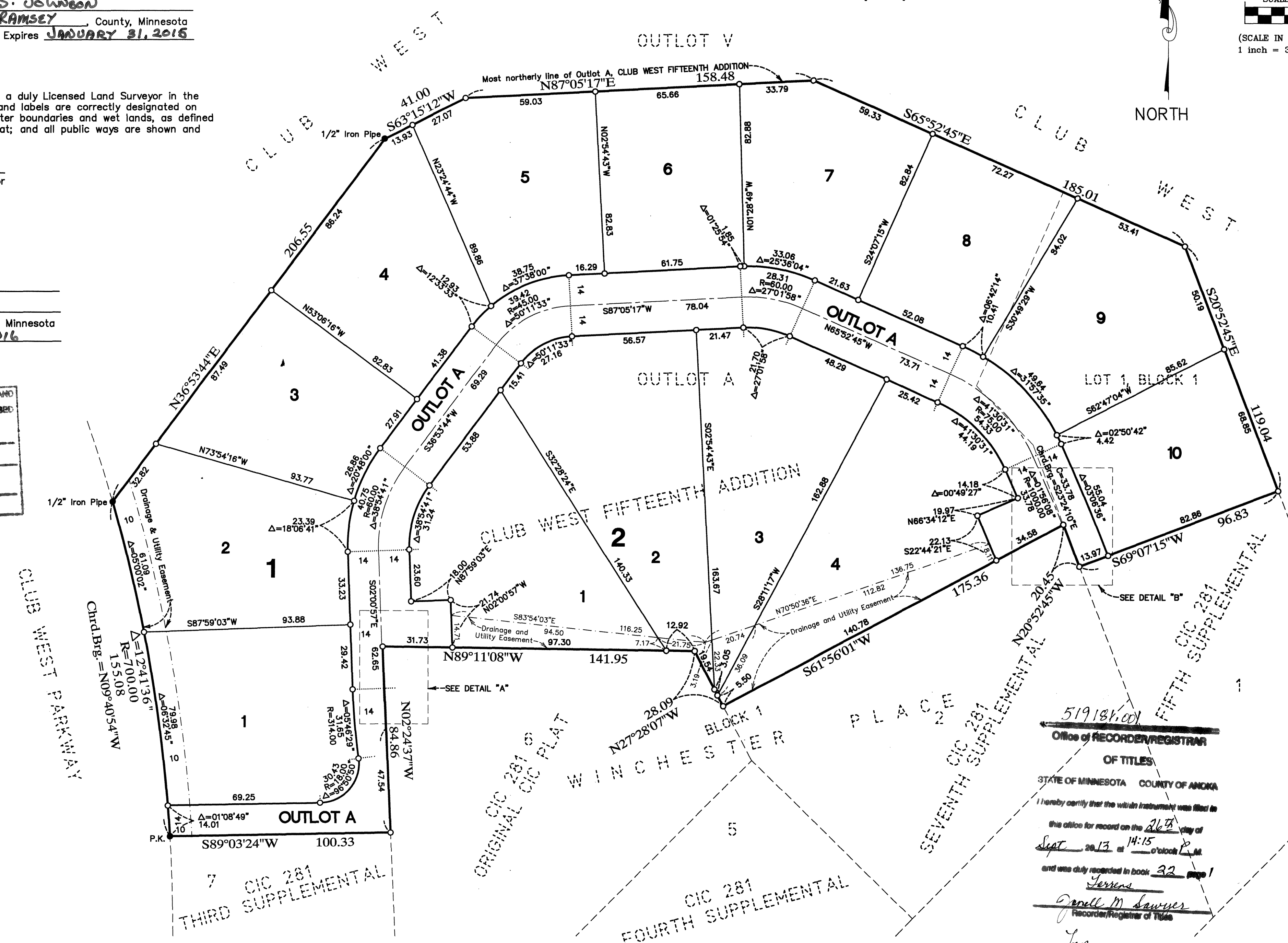
[Signature]
 Notary Public, Anoka County, Minnesota
 My Commission Expires Jan 31, 2016

FOR THE PURPOSES OF THIS PLAT, THE MOST NORTHERLY LINE OF OUTLOT A, CLUB WEST FIFTEENTH ADDITION, ANOKA COUNTY, MINNESOTA, IS ASSUMED TO BEAR N87°05'17"E.

I HEREBY CERTIFY THAT THE CURRENT AND DELINQUENT TAXES ON THE LANDS DESCRIBED WITHIN ARE PAID AND THE TRANSFER IS ENTERED September 26, 2013
[Signature]
 PROPERTY TAX ADMINISTRATOR
 DEPUTY



NOT TO SCALE



NORTH

ACRE LAND SURVEYING
 Blaine, MN 55449

● DENOTES FOUND MONUMENT.
 ○ DENOTES 1/2 INCH IRON PIPE MARKED BY LICENSE NO. 44125.
 ALL MONUMENT REQUIRED BY MINNESOTA STATUTE WILL BE SET WITHIN ONE YEAR OF THE RECORDING DATE OF THIS PLAT, AND SHALL BE EVIDENCED BY A 1/2" INCH BY 14 INCH IRON PIPE MARKED BY RLS 44125.

ORIGINAL CIC PLAT
 WINCHESTER
 BLOCK 1
 SEVENTH SUPPLEMENTAL
 FIFTH SUPPLEMENTAL
 Office of RECORDER/REGISTRAR OF TITLES
 STATE OF MINNESOTA COUNTY OF ANOKA
 I hereby certify that the within instrument was filed in this office for record on the 26th day of Sept, 2013, at 14:15 o'clock P.M. and was duly recorded in book 32 page 1
[Signature]
 Recorder/Registrar of Titles
 By: [Signature]

\$56.00