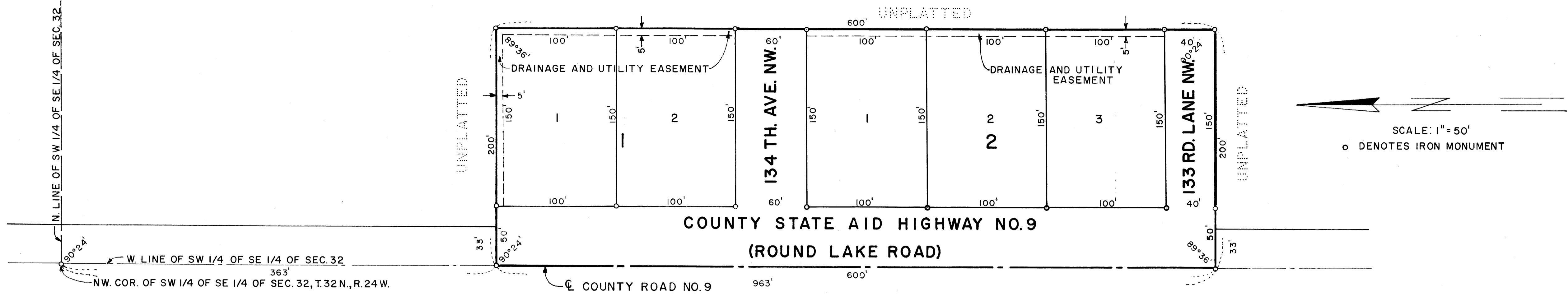


WEISE'S ADDITION

LEROY H. WINNER SURVEYOR



KNOW ALL MEN BY THESE PRESENTS THAT JOHN G. WEISE AND MARJORIE H. WEISE HIS WIFE, OWNERS AND PROPRIETORS OF THE FOLLOWING DESCRIBED PROPERTY SITUATED IN THE COUNTY OF ANOKA, STATE OF MINNESOTA, TO-WIT: THE SOUTH 600 FEET OF THE NORTH 963 FEET OF THE WEST 200 FEET OF THE SW 1/4 OF THE SE 1/4 OF SECTION 32, TOWNSHIP 32 NORTH, RANGE 24 WEST; SUBJECT TO THE RIGHT OF WAY OF COUNTY STATE AID HIGHWAY NO. 9, HAVE CAUSED THE SAME TO BE SURVEYED AND PLATTED AS WEISE'S ADDITION AND DO HEREBY DONATE AND DEDICATE TO THE PUBLIC FOR PUBLIC USE FOREVER THE HIGHWAY, AVENUE AND LANE AS SHOWN ON THE ANNEXED PLAT; ALSO SUBJECT TO UTILITY AND DRAINAGE EASEMENTS AS SHOWN ON THE ANNEXED PLAT. IN WITNESS WHEREOF WE HAVE HEREUNTO SET OUR HANDS AND SEAL THIS 24th DAY OF May 1964 A.D.

THE ANNEXED PLAT OF WEISE'S ADDITION WAS APPROVED BY THE TOWN BOARD OF THE TOWNSHIP OF GROW AT A REGULAR MEETING HELD THIS 26 DAY OF May 1964 A.D.
 Leonard Johnson CHAIRMAN OF TOWN BOARD
 Gail D. Palm CLERK OF TOWN BOARD

THIS PLAT WAS APPROVED AND ACCEPTED BY THE BOARD OF COUNTY COMMISSIONERS OF THE COUNTY OF ANOKA, STATE OF MINNESOTA, AT A REGULAR MEETING HELD THIS 2 DAY OF July 1964 A.D.

IN THE PRESENCE OF:
 Patricia Weise WITNESS
 Patricia Weise WITNESS
 Mina B. Hancock WITNESS
 Mina B. Hancock WITNESS
 John G. Weise SIGNED: JOHN G. WEISE
 Marjorie H. Weise SIGNED: MARJORIE H. WEISE

Merle Gashin CHAIRMAN
 Kenneth W. Anderson COUNTY AUDITOR

STATE OF MINNESOTA)
 COUNTY OF ANOKA) (SS

ON THIS 1st DAY OF June 1964 A.D. BEFORE ME, A NOTARY PUBLIC, WITHIN AND FOR SAID COUNTY AND STATE, PERSONALLY APPEARED JOHN G. WEISE AND MARJORIE H. WEISE, HIS WIFE, TO ME PERSONALLY KNOWN TO BE THE PERSONS DESCRIBED IN AND WHO EXECUTED THE FOREGOING INSTRUMENT; AND THEY AFFIRM AND ACKNOWLEDGE THAT THEY EXECUTED THE SAME AS THEIR OWN FREE ACT AND DEED.

THIS PLAT WAS APPROVED AS TO FORM AND EXECUTION ON THIS 26th DAY OF Aug 1964 A.D.
 BY Robert E. Johnson COUNTY ATTORNEY, ANOKA COUNTY, MINNESOTA

Maria B. Hancock
 NOTARY PUBLIC, ANOKA COUNTY, MINNESOTA
 MY COMMISSION EXPIRES Aug. 12, 1965

I DO HEREBY CERTIFY THAT I HAVE SURVEYED AND PLATTED THE PROPERTY DESCRIBED ON THIS PLAT AS WEISE'S ADDITION; THAT THIS PLAT IS A CORRECT REPRESENTATION OF SAID SURVEY; THAT ALL DISTANCES ARE CORRECTLY SHOWN ON SAID PLAT IN FEET AND DECIMALS OF A FOOT; THAT THE MONUMENTS FOR THE GUIDANCE OF FUTURE SURVEYS HAVE BEEN CORRECTLY PLACED IN THE GROUND AS SHOWN ON THE PLAT; THAT THE OUTSIDE BOUNDARY LINES ARE CORRECTLY DESIGNATED ON THE PLAT; AND THERE ARE NO WET LANDS OR PUBLIC HIGHWAYS TO BE DESIGNATED ON SAID PLAT OTHER THAN SHOWN THEREON.

SURVEYOR Leroy H. Winner
 MINNESOTA REGISTRATION NO. 4987

STATE OF MINNESOTA)
 COUNTY OF ANOKA) (SS

ABOVE CERTIFICATE SUBSCRIBED AND SWORN TO BEFORE ME, A NOTARY PUBLIC WITHIN AND FOR SAID COUNTY AND STATE ON THIS 2nd DAY OF November 1962 A.D.

THIS PLAT WAS CHECKED AND APPROVED ON THIS 2nd DAY OF July 1964 A.D.
Roland W. Anderson
 COUNTY SURVEYOR, ANOKA COUNTY, MINNESOTA

Robert E. Johnson
 NOTARY PUBLIC, ANOKA COUNTY, MINNESOTA
 MY COMMISSION EXPIRES August 16, 1966

RECOMMENDED FOR APPROVAL THIS 26th DAY OF August 1964 A.D.
B. J. Lundell
 COUNTY HIGHWAY ENGINEER, ANOKA COUNTY, MINNESOTA

I HEREBY CERTIFY THAT THE TAXES PAYABLE IN THE YEAR 1964 ON THE LANDS DESCRIBED WITHIN ARE PAID
Robert A. Peterson Anoka County Treasurer
 This 27th day of Aug 1964
Kenneth W. Campbell Auditor, Anoka County, Minn.
Wayne Ahlqvist Deputy

OFFICE OF REGISTER OF DEEDS
 STATE OF MINNESOTA, COUNTY OF ANOKA }
 I hereby certify that the within instrument was filed in this office for record on AUG 27 1964 A.D., 1964 at 2:15 o'clock P.M. and was duly recorded in book 2 of Plate 18
Bertrude Jensen
 Register of Deeds
 By Margaret Russell Deputy