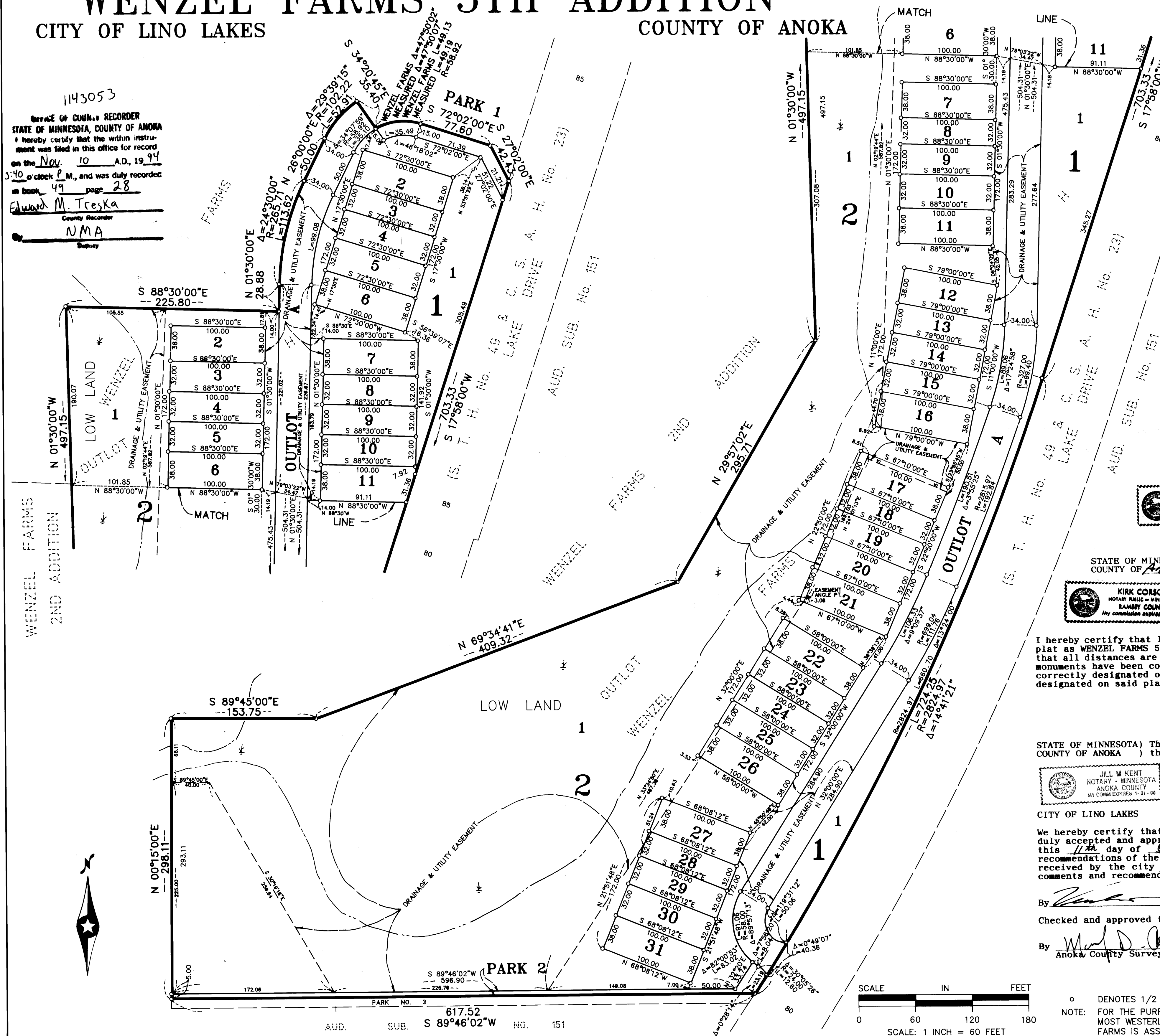


WENZEL FARMS 5TH ADDITION

CITY OF LINO LAKES COUNTY OF ANOKA

1143053
Office of County Recorder
STATE OF MINNESOTA, COUNTY OF ANOKA
I hereby certify that the within instrument was filed in this office for record on the 10 day of AD. 1994 at 3:40 o'clock P.M., and was duly recorded in book 49 page 28
Edward M. Treska
County Recorder
NMA
Deputy



I HEREBY CERTIFY THAT THE CURRENT AND DELINQUENT TAXES ON THE LANDS DESCRIBED WITHIN ARE PAID OR TO BE TRANSFERRED IS
ENTERED Nov 2 1994
S. Cullen
DEPUTY PROPERTY TAX ADMINISTRATOR

KNOW ALL PERSONS BY THESE PRESENTS: That Hokanson Development Company, Inc., a Minnesota corporation, owner and proprietor, and that Esther Noren, personal representative of Elsie J. Wenzel, deceased, mortgagee, of the following described property situated in the County of Anoka, State of Minnesota, to-wit:

Outlot H, WENZEL FARMS.

Have caused the same to be surveyed and platted as WENZEL FARMS 5TH ADDITION and do hereby donate and dedicate to the public for public use forever Park 1 and Park 2, as shown on the plat. Also dedicating the drainage and utility easements as shown on the plat. Also dedicating to the State of Minnesota and the County of Anoka, the right of access onto State Trunk Highway No. 49 and County State Aid Highway No. 23 from Lot 1, Block 1. In witness whereof said Hokanson Development Company, Inc., has caused these presents to be signed by its proper officer this 30th day of September, 1994. Also in witness whereof said Esther Noren has hereunto set her hand this 30th day of September, 1994.

HOKANSON DEVELOPMENT COMPANY, INC.:

Roger A. Hokanson
Roger A. Hokanson, as President

SIGNED:

Esther Noren
Esther Noren, personal representative of Elsie J. Wenzel, deceased.

(STATE OF MINNESOTA) The foregoing instrument was acknowledged before me this 30th day of September, 1994, by Roger A. Hokanson, as President of Hokanson Development Company, Inc., a Minnesota corporation, on behalf of the corporation.

KIRK CORSON
NOTARY PUBLIC - MINNESOTA
RAMSEY COUNTY
My commission expires 3-8-98

Kirk Corson
Notary Public, Ramsey County, Minnesota
My Commission expires 3-8-98

(STATE OF MINNESOTA) The foregoing instrument was acknowledged before me this 30th day of September, 1994, by Esther Noren, personal representative of Elsie J. Wenzel, deceased.

KIRK CORSON
NOTARY PUBLIC - MINNESOTA
RAMSEY COUNTY
My commission expires 3-8-98

Kirk Corson
Notary Public, Ramsey County, Minnesota
My Commission expires 3-8-98

I hereby certify that I have surveyed and platted the land described in the dedication on this plat as WENZEL FARMS 5TH ADDITION; that the plat is a correct representation of said survey; that all distances are correctly shown on said plat in feet and hundredths of a foot; that the monuments have been correctly placed in the ground as shown; that the outside boundaries are correctly designated on said plat; and that there are no wet lands or public highways to be designated on said plat other than as shown thereon.

Jeffrey N. Caine
Jeffrey N. Caine, Registered Land Surveyor
Minnesota Registration No. 12251

(STATE OF MINNESOTA) The surveys certificate was acknowledged before me a Notary Public, COUNTY OF ANOKA) this 29th day of September, 1994, by Jeffrey N. Caine, Land Surveyor.

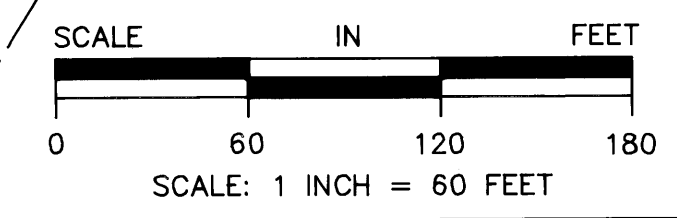
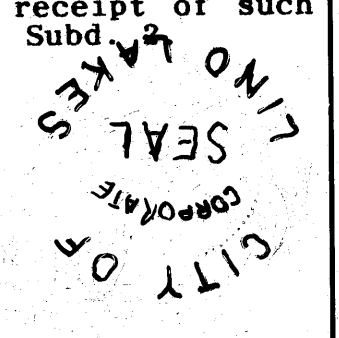
JILL M. KENT
NOTARY - MINNESOTA
ANOKA COUNTY
MY COMMISSION EXPIRES 1-31-00

Jill M. Kent
Notary Public, Anoka County, Minnesota
My Commission expires 01-31-00

CITY OF LINO LAKES
We hereby certify that the City Council of the City of Lino Lakes, Anoka County, Minnesota, duly accepted and approved the plat of WENZEL FARMS 5TH ADDITION at a regular meeting held on this 11th day of October, 1994. If applicable, the written comments and recommendations of the Commissioner of Transportation and the County Highway Engineer have been received by the city or the prescribed 30 day period has elapsed without receipt of such comments and recommendations, as provided by Minn. Statutes, Section 505.03, Subd.

By [Signature] Mayor By Marilyn S. Anderson City Clerk
Checked and approved this 26th day of Oct., 1994.

By [Signature]
Anoka County Surveyor



o DENOTES 1/2 INCH IRON PIPE SET.
NOTE: FOR THE PURPOSES OF THIS PLAT, THE MOST WESTERLY LINE OF OUTLOT H, WENZEL FARMS IS ASSUMED TO BEAR N 0°15'00"E.

CAINE & ASSOCIATES
LAND SURVEYORS, INC.