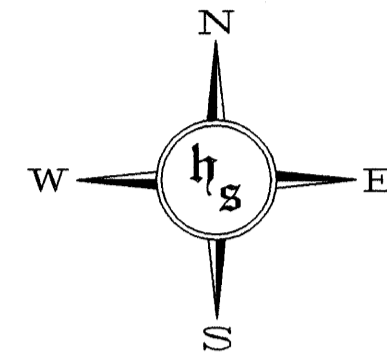


CITY OF COON RAPIDS
COUNTY OF ANOKA
SECTION 11, TOWNSHIP 31, RANGE 24.

WESTON WOODS ON PINE RIDGE 2ND ADDITION

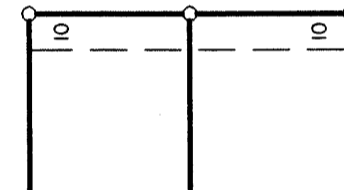


0 20 40 60
SCALE: 1 INCH = 20 FEET

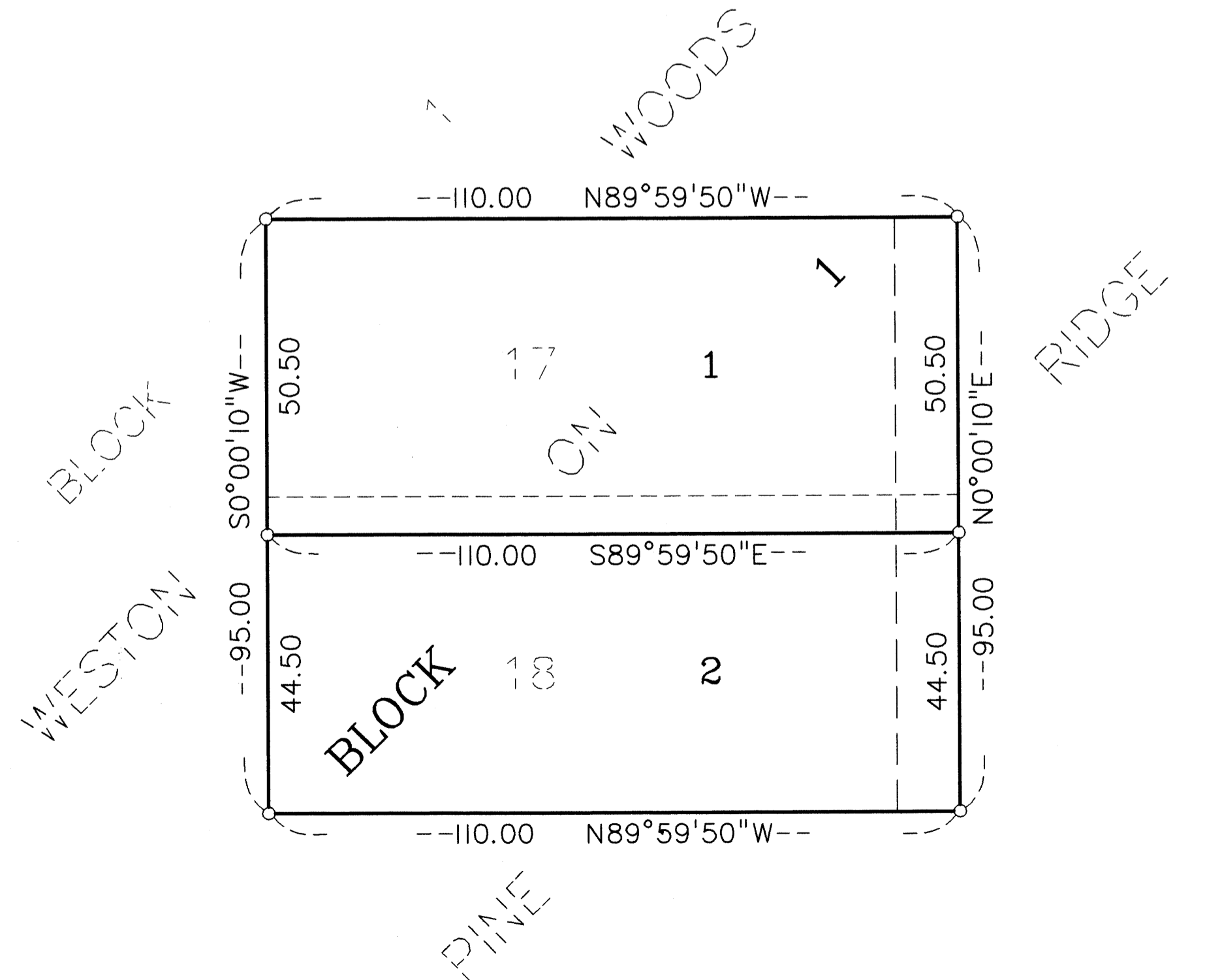
○ - DENOTES FOUND IRON MONUMENT.

FOR THE PURPOSES OF THIS PLAT, THE WEST LINE OF LOTS 17 & 18, BLOCK 1, WESTON WOODS ON PINE RIDGE HAS AN ASSUMED BEARING OF SOUTH 0°00'10" WEST.

DRAINAGE AND UTILITY EASEMENTS SHOWN THUS



BEING 10.00 FEET IN WIDTH, AND ADJOINING FRONT LOT LINES UNLESS OTHERWISE SHOWN ON THE PLAT.



KNOW ALL MEN BY THESE PRESENTS: That Mark Of Excellence Homes, Inc., a Minnesota Corporation, owner and proprietor, of the following described property situated in the County of Anoka, State of Minnesota, to-wit:

Lots 17 and 18, Block 1, WESTON WOODS ON PINE RIDGE, according to the duly recorded plat thereof.

Has caused the same to be surveyed and platted as WESTON WOODS ON PINE RIDGE 2ND ADDITION and does hereby donate and dedicate to the public for public use forever the easements for drainage and utility purposes as shown on the plat. In witness whereof said Mark Of Excellence Homes, Inc., a Minnesota Corporation, has caused these presents to be signed by its proper officer this 9th day of July, 2001.

Signed: MARK OF EXCELLENCE HOMES, INC.

Mark R. Smith
Mark R. Smith, President

State of Minnesota
County of Anoka The foregoing instrument was acknowledged before me this 9th day of July, 2001, by Mark R. Smith as President of Mark Of Excellence Homes, Inc., a Minnesota Corporation on behalf of said Corporation.

Eileen R. Cota
Notary Public, Anoka County, Minnesota
My Commission Expires Jan 31, 2005

Eileen R. Cota
Notary Public, Anoka County, Minnesota
My commission expires 1-31-05

I hereby certify that I have surveyed and platted the property described on this plat of WESTON WOODS ON PINE RIDGE 2ND ADDITION and that this plat is a correct representation of said survey; that all distances are correctly shown on said plat in feet and hundredths of a foot; that all monuments have been correctly placed in the ground as shown on said plat; that the outside boundary lines are correctly designated on said plat; and that there are no wetlands as defined in MS505.02 Sub. 1 or public highways to be designated on said plat other than as shown thereon.

Milton E. Hyland
Milton E. Hyland, Licensed Land Surveyor
Minnesota License No. 20262

State of Minnesota
County of Hennepin The foregoing instrument was acknowledged before me this 4th day of June, 2001, by Milton E. Hyland, Licensed Land Surveyor.

Ruthanne Mary Hyland
Notary Public - Minnesota
My Commission Expires Jan 31, 2005

Ruthanne Mary Hyland
Notary Public, Hennepin County, Minnesota
My Commission Expires January 31, 2005

The plat of WESTON WOODS ON PINE RIDGE 2ND ADDITION was approved by the Planning and Zoning Commission of Coon Rapids at a regular meeting thereof held this 2nd day of November, 1999.

By: Dorena M. Naewe
Chairman

This plat of WESTON WOODS ON PINE RIDGE 2ND ADDITION was approved and accepted by the City Council of Coon Rapids, Minnesota, at a regular meeting thereof held this 3rd day of April, 2001. If applicable, the written comments and recommendations of the Commissioner of Transportation and the County Highway Engineer have been received by the City or the prescribed 30 day period has elapsed without receipt of such comments and recommendations, as provided by Minn. Statutes Section 505.03 Subd. 2.

Cliff M. Conley
Mayor

Joan A. Anderson
Clerk

Checked and approved this 14th day of August, 2001.

Larry H. Haim
Larry Haim, Anoka County Surveyor

Document # 1595173

OFFICE OF COUNTY RECORDER
STATE OF MINNESOTA, COUNTY OF ANOKA
I hereby certify that the within instrument was filed in this office for record on the 16 Aug, A.D., 2001 at 10:50 o'clock A.M., and was duly recorded in book 4 CIC, page 36.

Margaret J. Devine
County Recorder

By: Bmc

Receipt # 2001073875
\$155.00

I HEREBY CERTIFY THAT THE CURRENT AND DELINQUENT TAXES ON THE LANDS DESCRIBED WITHIN ARE PAID AND THE TRANSFER IS ENTERED Aug 16 2001
MARGARET J. DEVINE
PROPERTY TAX ADMINISTRATOR
Bmc
DEVELOPER PROPERTY TAX ADMINISTRATOR

HY-LAND SURVEYING, P.A.
LAND SURVEYORS