

WESTON WOODS ON RICE CREEK 2ND ADDITION

Book 79 Abst Pg 3 City of Blaine
County of Anoka
Sec. 36, T. 31, R. 23

KNOW ALL PERSONS BY THESE PRESENTS: That Mark of Excellence Homes, Inc., a Minnesota corporation, owner of the following described property:

Outlot B, WESTON WOODS ON RICE CREEK, according to the record plat thereof, Anoka County, Minnesota.

Has caused the same to be surveyed and platted as WESTON WOODS ON RICE CREEK 2ND ADDITION and does hereby dedicate to the public for public use the drainage and utility easements as created by this plat. Also dedicating to the County of Anoka the right of access onto County State Aid Highway No. 17 as shown on this plat.

In witness whereof said Mark of Excellence Homes, Inc., a Minnesota corporation, has caused these presents to be signed by its proper officer this 22 day of April, 2016.

MARK OF EXCELLENCE HOMES, INC.

Mark Smith

Mark Smith

its President

President

STATE OF MINNESOTA
COUNTY OF Ramsey

This instrument was acknowledged before me this 22 day of

April, 2016 by Mark Smith

its President of Mark of Excellence Homes, Inc., a Minnesota corporation, on behalf of the corporation.

William

Notary Public, Washington County, Minnesota
My Commission Expires 1-31-2020

I Eric B. Lindgren do hereby certify that this plat was prepared by me or under my direct supervision; that I am a duly Licensed Land Surveyor in the State of Minnesota; that this plat is a correct representation of the boundary survey; that all mathematical data and labels are correctly designated on this plat; that all monuments depicted on this plat have been, or will be correctly set within one year; that all water boundaries and wetlands, as defined in Minnesota Statutes, Section 505.01, Subd. 3, as of the date of this certificate are shown and labeled on this plat; and all public ways are shown and labeled on this plat.

Dated this 21st day of JANUARY, 2016.

Eric B. Lindgren

Eric B. Lindgren, Licensed Land Surveyor
Minnesota License No. 48176

STATE OF MINNESOTA
COUNTY OF HENNEPIN

This instrument was acknowledged before me this 21st day of JANUARY, 2016 by Eric B. Lindgren.

Jayci Blair Stog
Jayci Blair Stog

Notary Public, Dakota County, Minnesota
My Commission Expires JAN 31, 2016

CITY COUNCIL, CITY OF BLAINE, MINNESOTA

This plat of WESTON WOODS ON RICE CREEK 2ND ADDITION was approved and accepted by the City Council of the City of Blaine, Minnesota at a regular meeting thereof held this 17th day of March, 2016, and said plat is in compliance with the provisions of Minnesota Statutes, Section 505.03, Subd. 2.

CITY COUNCIL, CITY OF BLAINE, MINNESOTA

By: *Richard*

Richard, Mayor

By: *Cathy*

Cathy, Clerk

ANOKA COUNTY SURVEYOR

I hereby certify that in accordance with Minnesota Statutes, Section 505.021, Subd. 11, this plat has been reviewed and approved this 22nd day of April, 2016.

By Larry D. Hoim by Charles F. Ritzgen, Deputy

Larry D. Hoim
Anoka County Surveyor

ANOKA COUNTY AUDITOR/TREASURER

Pursuant to Minnesota Statutes, Section 505.021, Subd. 9, taxes payable in the year 2016 on the land hereinbefore described have been paid. Also, pursuant to Minnesota Statutes, Section 272.12, there are no delinquent taxes and transfer entered this 22nd day of April, 2016.

Jonell M Sawyer

Jonell M Sawyer
Property Tax Administrator
By Psm, Deputy

ANOKA COUNTY RECORDER/REGISTRAR OF TITLES

I hereby certify that this plat of WESTON WOODS ON RICE CREEK 2ND ADDITION was filed in the office of the County Recorder/Registrar of Titles for public record on this 22 day of APRIL, 2016, at 2:59 o'clock P.M. and was duly recorded in Book 79 Page 3, as Document Number 2135153.001.

Jonell M Sawyer

Jonell M Sawyer
County Recorder/Registrar of Titles
By Psm, Deputy

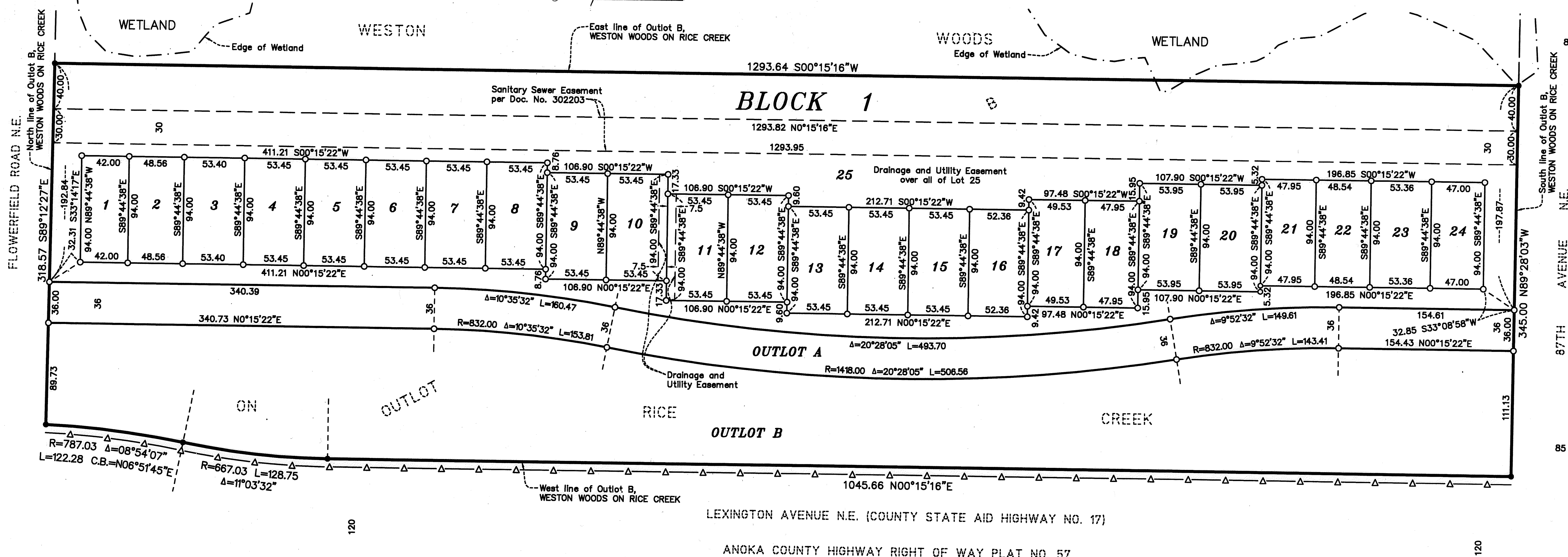
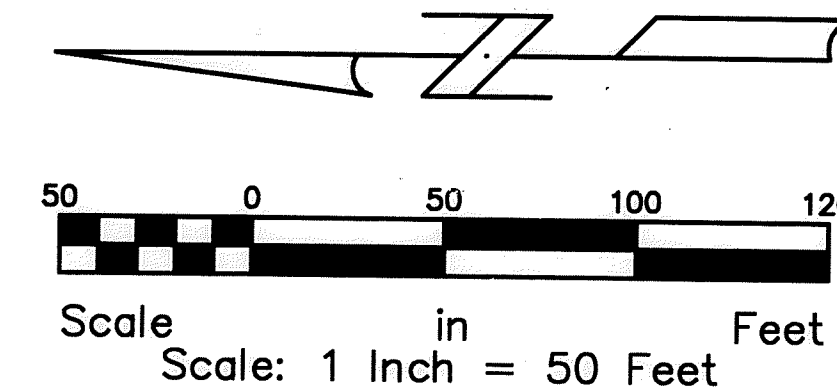
Denotes Right of Access dedicated to Anoka County

Wetland delineated by Kjolhaug Environmental in October 2013.

Denotes 1/2 inch iron pipe monument found.

Denotes 1/2 inch by 14 inch iron pipe monument set and marked by License No. 48176.

For the purposes of this plat the East line of Outlot B, WESTON WOODS ON RICE CREEK has an assumed bearing of S00°15'16"W.



LEXINGTON AVENUE N.E. (COUNTY STATE AID HIGHWAY NO. 17)
ANOKA COUNTY HIGHWAY RIGHT OF WAY PLAT NO. 57

