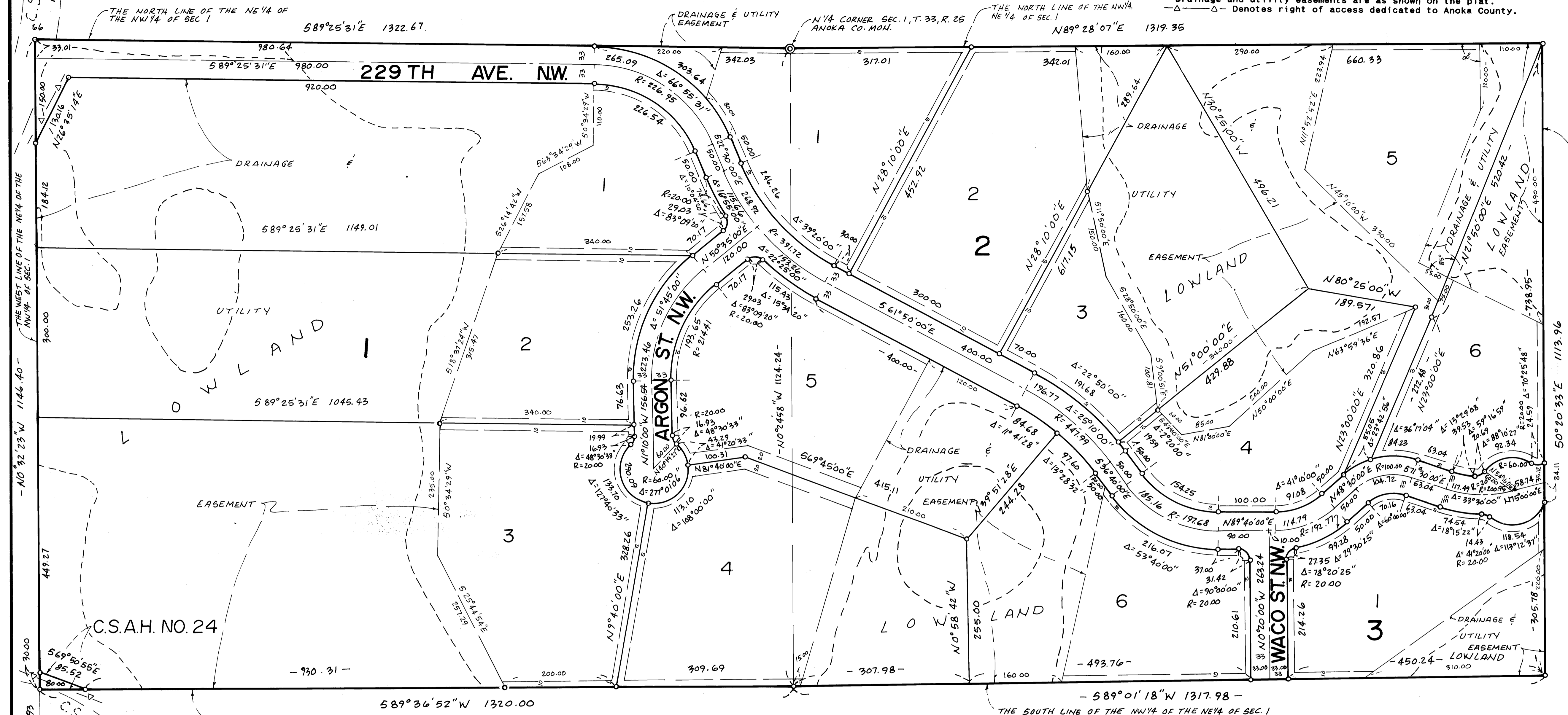


WESTPHAL COUNTRY ACRES

BURNS TWP., ANOKA CO.

O Denotes iron monuments set with Minnesota License No. 13297
 For the purpose of this plat the north line of the Northeast Quarter has an assumed bearing of North 89 degrees 28 minutes 07 seconds East
 Drainage and utility easements are as shown on the plat.
 -Δ- Denotes right of access dedicated to Anoka County.

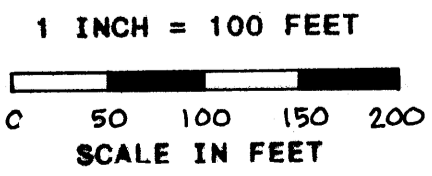


Doc: 1170860
 OFFICE OF COUNTY RECORDER
 STATE OF MINNESOTA, COUNTY OF ANOKA
 I hereby certify that the within instrument was filed in this office for record on the 27 June A.D., 1995 at 2:45 o'clock P.M., and was duly recorded in book 51 page 1
 Edward M. Trepo
 County Recorder
 Deputy

KNOW ALL MEN BY THESE PRESENTS: That Westphal Construction Co., Inc. a Minnesota corporation, fee owner of the following described property situated in the state of Minnesota, County of Anoka to wit:
 The Northwest Quarter of the Northeast Quarter and the Northeast Quarter of the Northwest Quarter of Section 1, Township 33, Range 25
 Have caused the same to be surveyed and platted as WESTPHAL COUNTRY ACRES and do hereby donate and dedicate to the public for public use forever the thoroughfares and cul de sacs, also the easements as shown on the plat for drainage and utility purposes only and dedicate to Anoka County the right of access as shown on this plat. In witness whereof said Westphal Construction Co., Inc., has hereunto set their hands this 17 day of MAY 1995.
 Florence Shebetka
 Westphal Construction Co., Inc., By Florence Shebetka, President
 STATE OF MINNESOTA
 COUNTY OF ANOKA
 DOROTHY J. SMITH
 Notary Public - Minnesota
 My Comm. Exp. Jan. 31, 2000
 The foregoing instrument was acknowledged before me this 17 day of May 1995 by Florence Shebetka, President of Westphal Construction Co., Inc., a Minnesota corporation, on behalf of said corporation.

I hereby certify that I have surveyed and platted the property described on this plat of WESTPHAL COUNTRY ACRES; that this plat is a correct representation of said survey; that all distances are correctly shown on said plat in feet and hundredths of a foot; that all monuments have been correctly placed in the ground as shown on the plat or will be placed as required by the local governmental unit as designated on said plat, that there are no public highways or wet lands to be designated on said plat other than as shown.
 Ronald J. Swenson
 Ronald J. Swenson, Land Surveyor
 Minnesota License No. 13297
 STATE OF MINNESOTA
 COUNTY OF ANOKA
 The foregoing surveyor's certificate was acknowledged before me this 17th day of May 1995 by Ronald J. Swenson, Land Surveyor.
 Edward M. Trepo
 Notary Public, Anoka County, Minnesota. My commission expires Jan 31, 2000.

This plat of WESTPHAL COUNTRY ACRES was approved the Town Board of Burns Township, Anoka County, Minnesota at a regular meeting held this day of July 12, 1994. If applicable the written comments and recommendations of the Commissioner of Transportation and County Highway Engineer have been received by the city or the prescribed 30 day period has elapsed without receipt of such comments and recommendations, as provided by Minnesota Statutes, Section 505.05, Subd. 2.
 Attest Penny L. Smaby, Clerk
 Signed Anthony C. Palumbo, Chairman
 This plat was approved and accepted by the Board of County Commissioners of Anoka County, State of Minnesota, at a meeting held this 13 day of June, 1995.
 By Don Edert, Chairman
 By John Jay W. Lindner, Anoka County Administrator
 Checked and approved this 30 day of May, 1995. By Anthony C. Palumbo, Anoka Surveyor
 Recommended for approval this 23 day of May, 1995.
 By Anthony C. Palumbo, Anoka County Highway Engineer
 This plat was approved as to form and execution on this 21 day of June 1995.
 By Anthony C. Palumbo, Anoka County Attorney



SWENSON LAND SURVEYING, INC.