

# WHISPERING ASPEN

KNOW ALL MEN BY THESE PRESENTS: That the City of East Bethel, a Minnesota municipal corporation, owner of the following described property situated in the State of Minnesota, County of Anoka to wit:

All property platted as MINARD LAKE ESTATES in its entirety, except that part dedicated as 241st Avenue NE in said plat of MINARD LAKE ESTATES.

Has caused the same to be surveyed and platted as WHISPERING ASPEN and does hereby dedicate to the public for public use forever the streets, way, circles, lanes, path and avenues and the drainage and utility easements as shown on this plat.

In witness whereof said City of East Bethel, a Minnesota municipal corporation, has caused these presents to be signed by its proper officers this 12<sup>th</sup> day of February, 2004.

CITY OF EAST BETHEL

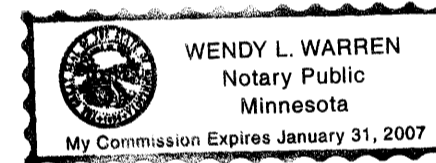
Julie Wieg  
Acting Mayor

Sharon Anderson  
Sharon Anderson, Clerk

STATE OF Minnesota  
COUNTY OF Anoka

The foregoing instrument was acknowledged before me this 12<sup>th</sup> day of February, 2004, by Sandra L. Wieg and Sharon Anderson, as Clerk of City of East Bethel, a Minnesota municipal corporation, on behalf of the corporation.

Wendy J. Warren  
Notary Public, Anoka County, Minnesota  
My commission Expires Jan. 31, 2007



I hereby certify that I have surveyed and platted the property described on this plat as WHISPERING ASPEN; that this plat is a correct representation of said survey; that all distances are correctly shown on the plat in feet and hundredths of a foot; that all monuments will be correctly placed in the ground as shown; that the outside boundary lines are correctly designated on said plat and that there are no wetlands or public highways to be designated other than as shown on said plat.

Jason E. Rud  
Jason E. Rud  
Minnesota Registration No. 41578

STATE OF MINNESOTA  
COUNTY OF HENNEPIN

The foregoing Surveyors Certificate was acknowledged before me this 11<sup>th</sup> day of February, 2004, by Jason E. Rud, Land Surveyor

Denise C. Mordley  
Notary Public, Hennepin County, Minnesota  
My Commission Expires January 31, 2008

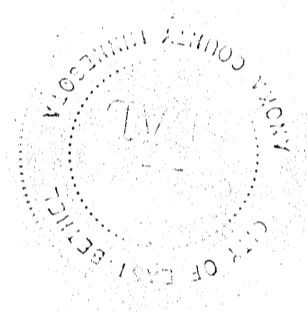


This plat of WHISPERING ASPEN was approved by the City Council of East Bethel, Minnesota at a regular meeting thereof held this 21<sup>st</sup> day of January, 2004, and if applicable, the written comments and recommendations of the Commissioner of Transportation and the County Highway Engineer have been received by the City or the prescribed 30 day period has elapsed without receipt of such comments and recommendations, as provided by Minnesota Statutes, Section 505.03, Subd. 2.

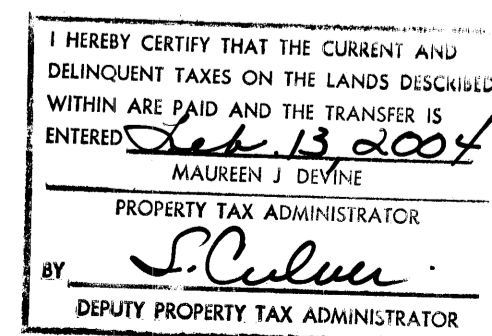
By Julie Wieg Acting Mayor  
By Sharon Anderson Clerk

This plat has been checked and approved this 13<sup>th</sup> day of FEBRUARY, 2004.

Larry D. Hagan  
Larry D. Hagan  
Anoka County Surveyor



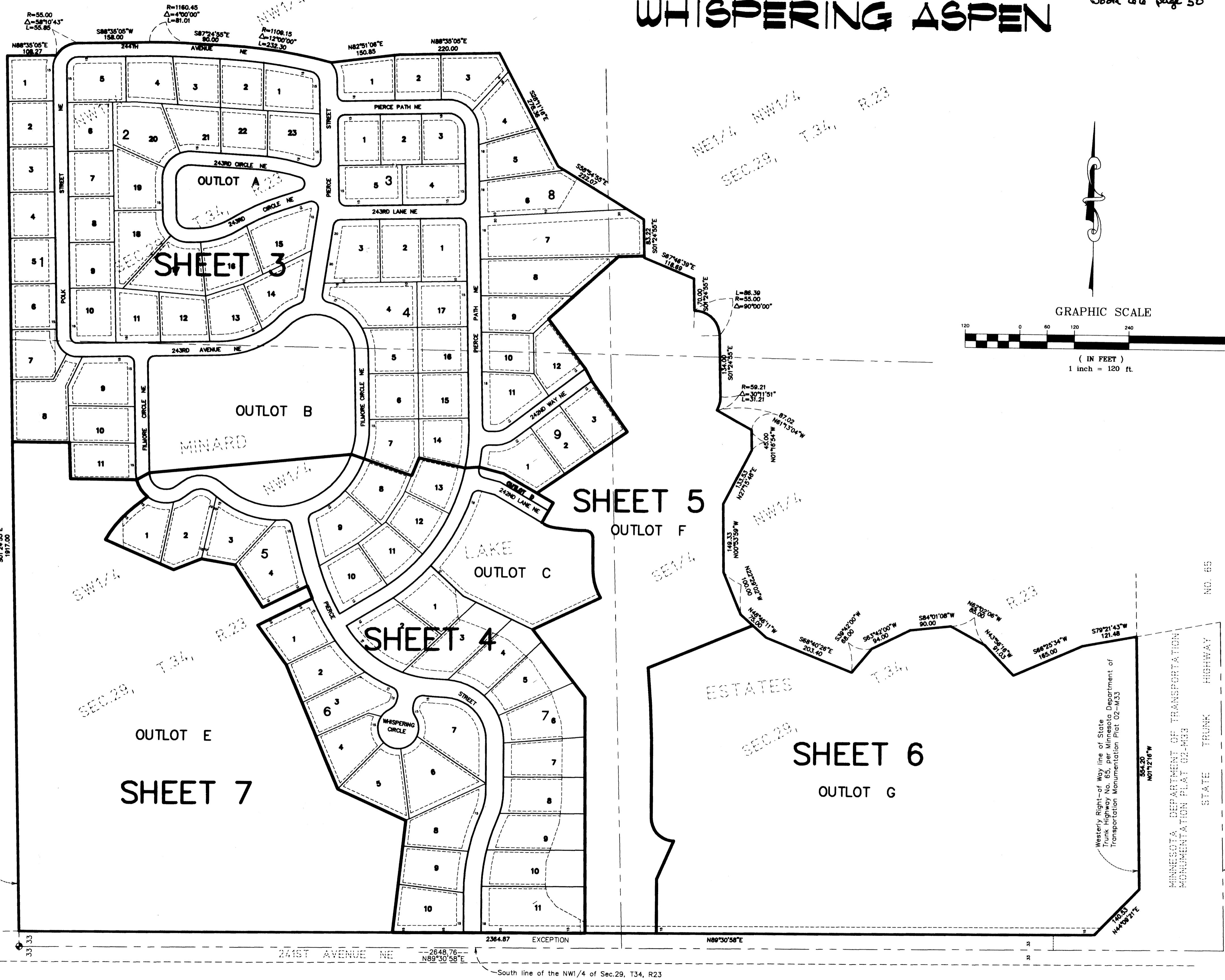
E. G. RUD & SONS, INC.  
LAND SURVEYORS



1897854  
OFFICE OF COUNTY RECORDER  
STATE OF MINNESOTA, COUNTY OF ANOKA  
I hereby certify that the within instrument was filed in this office for record on the 13 Feb A.D., 2004 at 1:20 o'clock P.M., and was duly recorded in book 64 at page 50.  
Maureen J. Devine  
County Recorder  
BY K H J  
Deputy

Receipt # 2004029619 # 55.00

# WHISPERING ASPEN



**E. G. RUD & SONS, INC.**  
LAND SURVEYORS



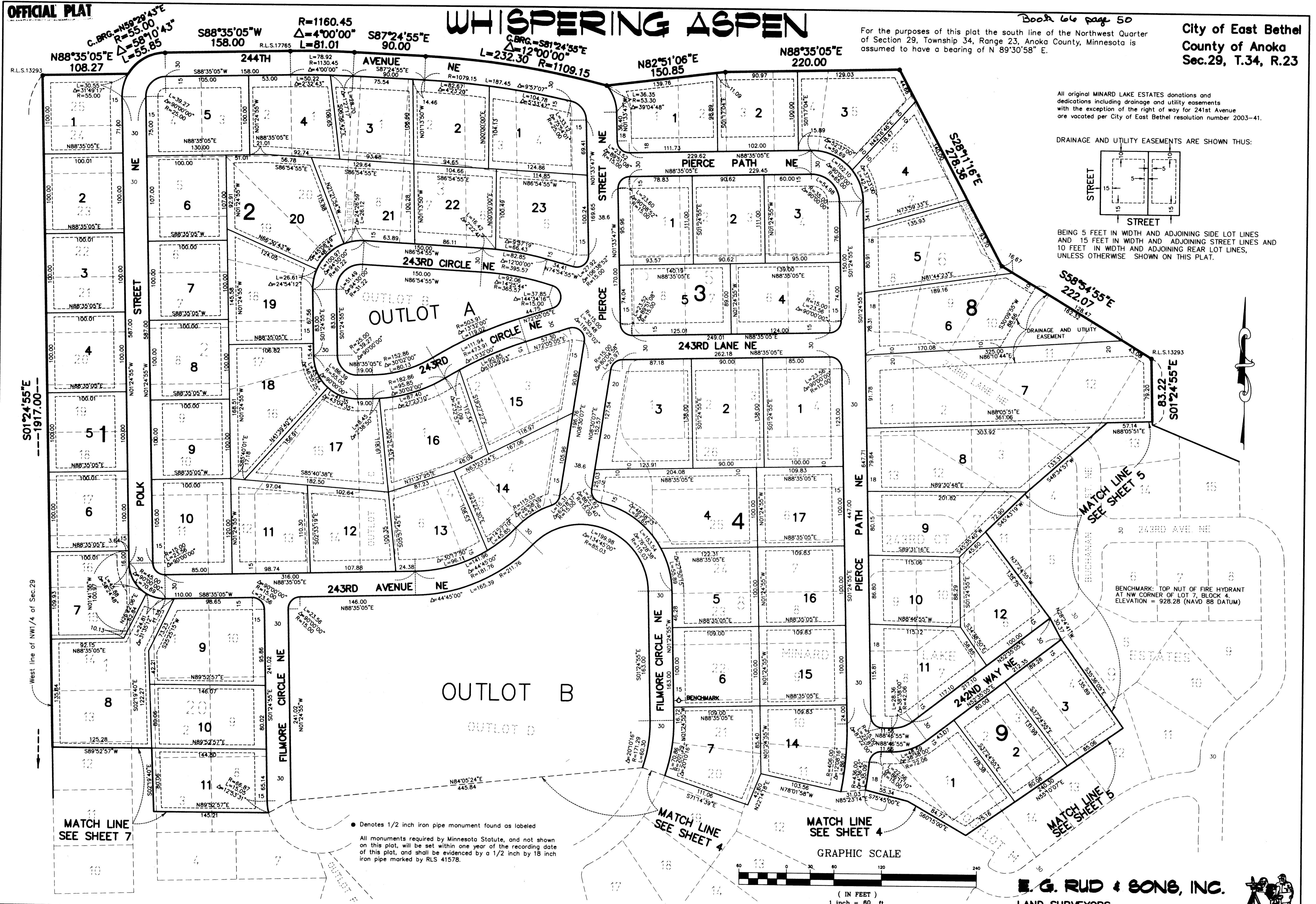
OFFICIAL PLAT

# WHISPERING ASPEN

Book 66 page 50

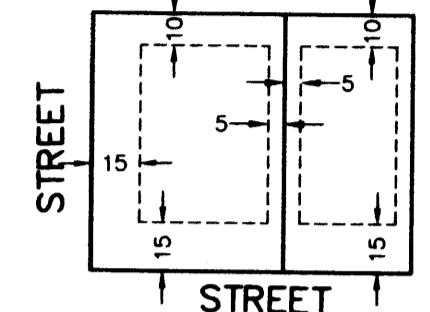
City of East Bethel  
County of Anoka  
Sec. 29, T. 34, R. 23

For the purposes of this plat the south line of the Northwest Quarter of Section 29, Township 34, Range 23, Anoka County, Minnesota is assumed to have a bearing of N 89°30'58" E.



All original MINARD LAKE ESTATES donations and dedications including drainage and utility easements with the exception of the right of way for 241st Avenue are vacated per City of East Bethel resolution number 2003-41.

DRAINAGE AND UTILITY EASEMENTS ARE SHOWN THUS:



BEING 5 FEET IN WIDTH AND ADJOINING SIDE LOT LINES AND 15 FEET IN WIDTH AND ADJOINING STREET LINES AND 10 FEET IN WIDTH AND ADJOINING REAR LOT LINES, UNLESS OTHERWISE SHOWN ON THIS PLAT.

S01°24'55"E  
---1917.00---

West line of NW1/4 of Sec. 29

MATCH LINE  
SEE SHEET 7

• Denotes 1/2 inch iron pipe monument found as labeled  
All monuments required by Minnesota Statute, and not shown on this plat, will be set within one year of the recording date of this plat, and shall be evidenced by a 1/2 inch by 18 inch iron pipe marked by RLS 41578.

MATCH LINE  
SEE SHEET 4

MATCH LINE  
SEE SHEET 4

GRAPHIC SCALE



( IN FEET )  
1 inch = 60 ft.

**E. G. RUD & SONS, INC.**  
LAND SURVEYORS



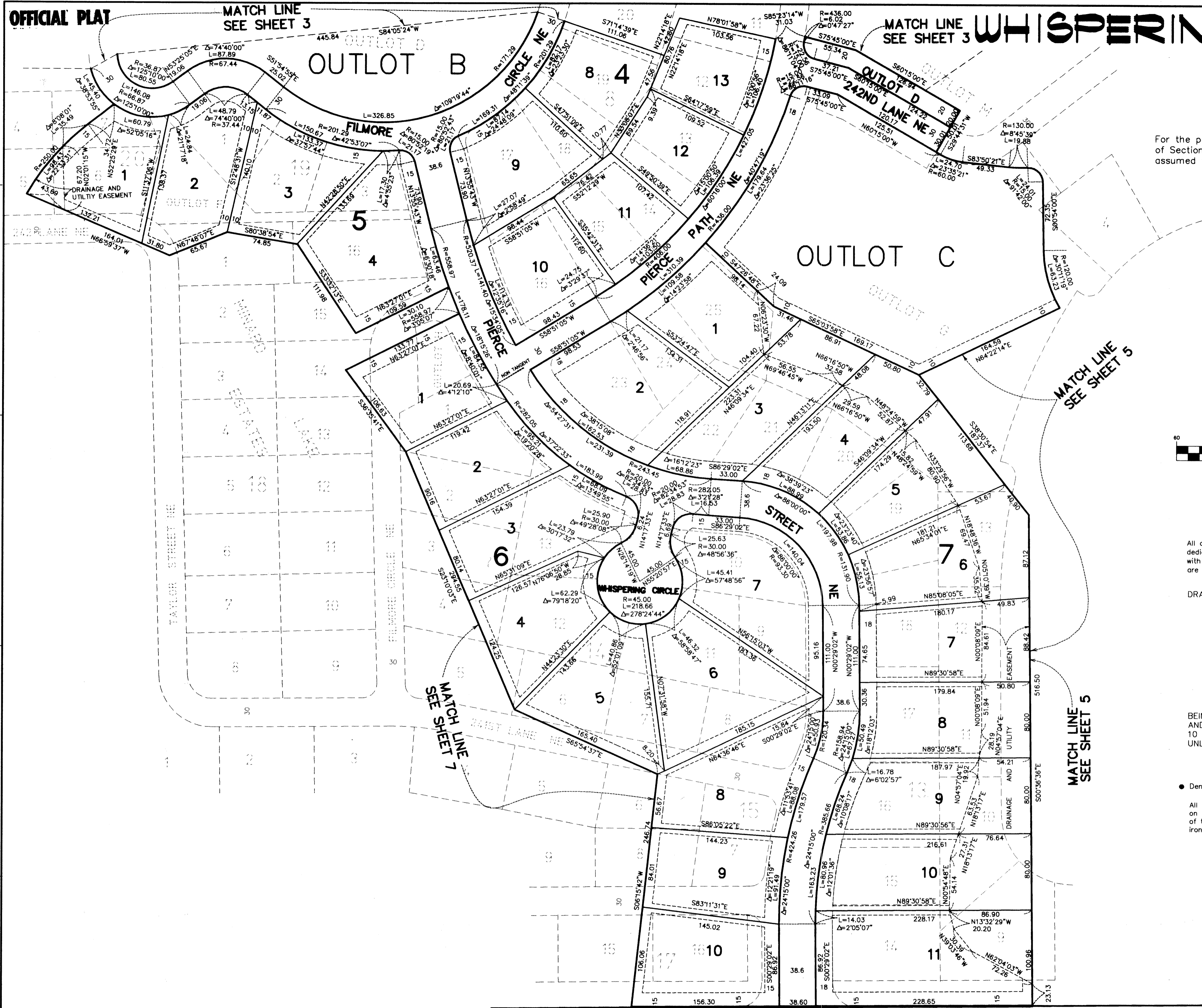
OFFICIAL PLAT

MATCH LINE  
SEE SHEET 3

MATCH LINE  
SEE SHEET 3

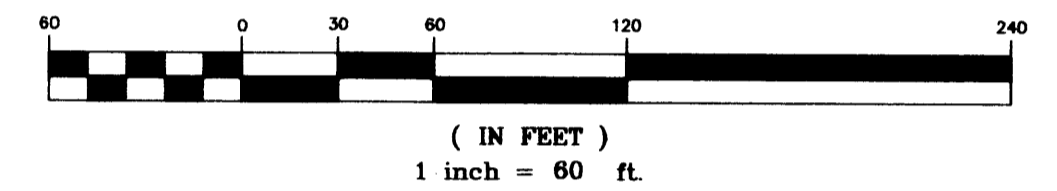
# WHISPERING ASPEN

Book 66 Page 50  
City of East Bethel  
County of Anoka  
Sec.29, T.34, R.23



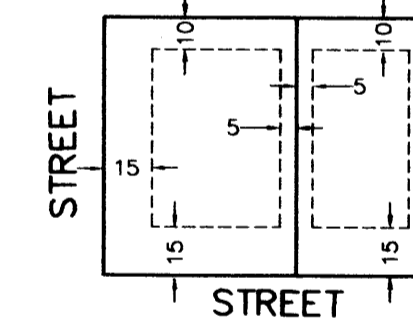
For the purposes of this plat the south line of the Northwest Quarter of Section 29, Township 34, Range 23, Anoka County, Minnesota is assumed to have a bearing of N 89°30'58" E.

GRAPHIC SCALE



All original MINARD LAKE ESTATES donations and dedications including drainage and utility easements with the exception of the right of way for 241st Avenue are vacated per City of East Bethel resolution number 2003-41.

DRAINAGE AND UTILITY EASEMENTS ARE SHOWN THUS:



BEING 5 FEET IN WIDTH AND ADJOINING SIDE LOT LINES AND 15 FEET IN WIDTH AND ADJOINING STREET LINES AND 10 FEET IN WIDTH AND ADJOINING REAR LOT LINES, UNLESS OTHERWISE SHOWN ON THIS PLAT.

● Denotes 1/2 inch iron pipe monument found as labeled

All monuments required by Minnesota Statute, and not shown on this plat, will be set within one year of the recording date of this plat, and shall be evidenced by a 1/2 inch by 18 inch iron pipe marked by RLS 41578.

**E. G. RUD & SONS, INC.**  
LAND SURVEYORS

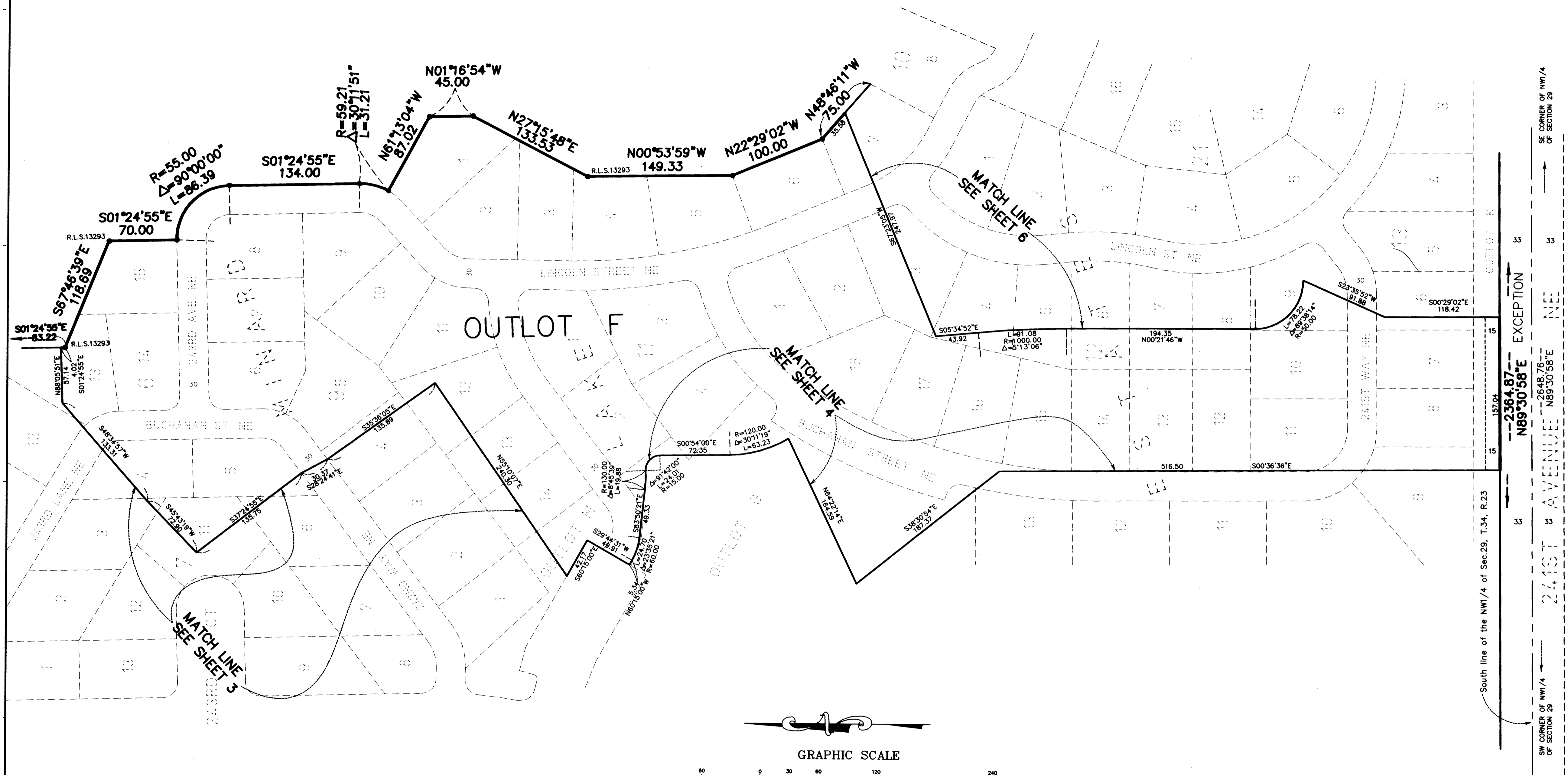


SW COR. OF NW1/4  
SEC.29, T34, R23

EXCEPTION  
---2364.87---  
N89°30'58"E

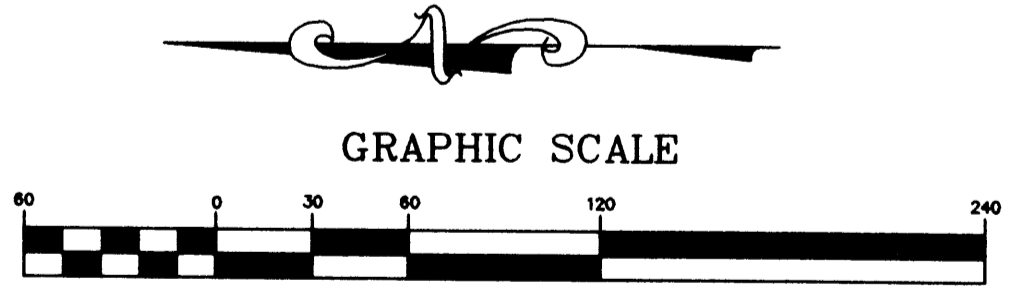
33 241ST AVENUE NE ---2648.76---  
N89°30'58"E 33

SE COR. OF NW1/4  
SEC.29, T34, R23

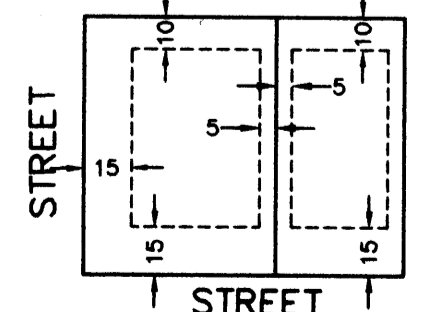


For the purposes of this plat the south line of the Northwest Quarter of Section 29, Township 34, Range 23, Anoka County, Minnesota is assumed to have a bearing of N 89°30'58" E.

All original MINARD LAKE ESTATES donations and dedications including drainage and utility easements with the exception of the right of way for 241st Avenue are vacated per City of East Bethel resolution number 2003-41.



DRAINAGE AND UTILITY EASEMENTS ARE SHOWN THUS:



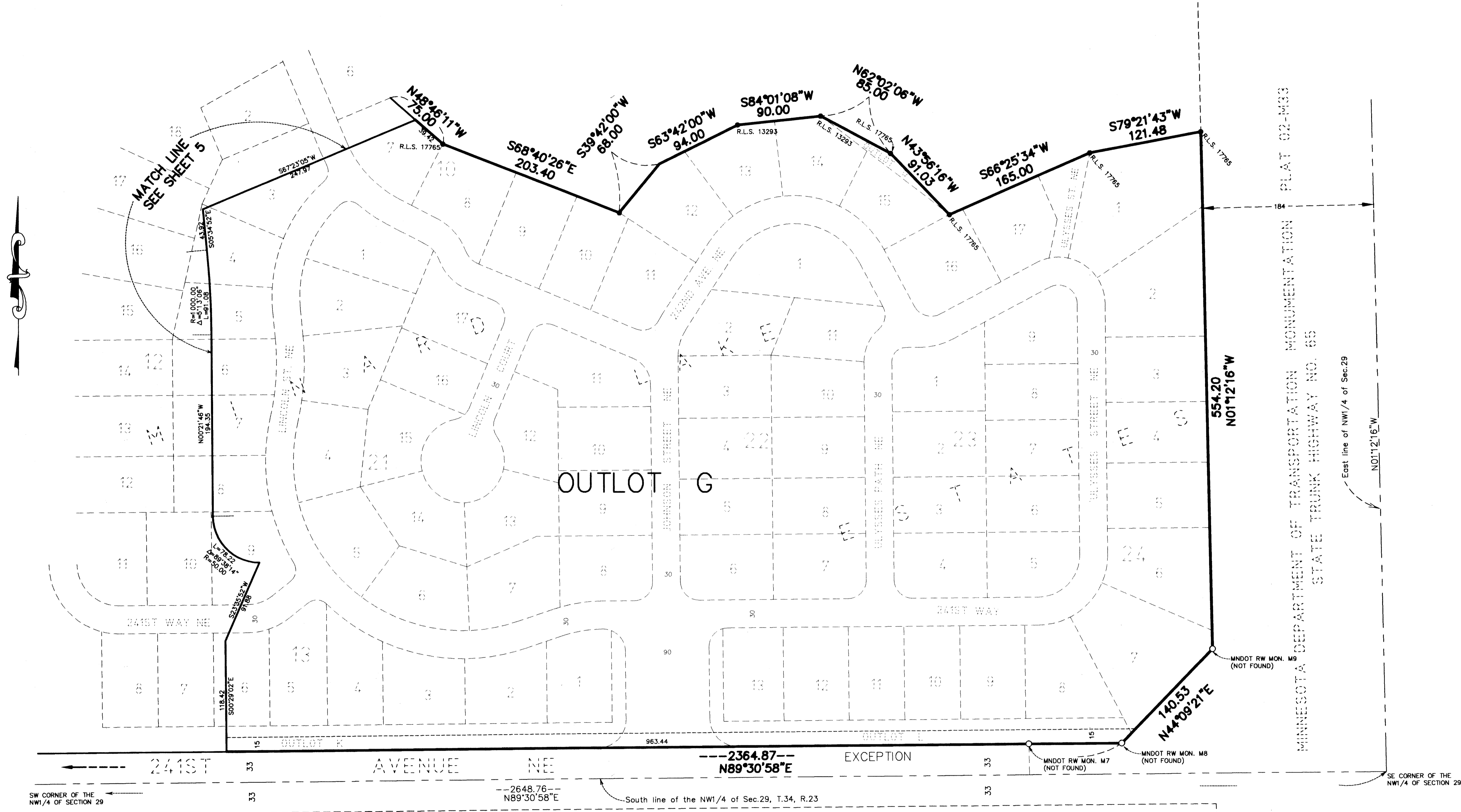
BEING 5 FEET IN WIDTH AND ADJOINING SIDE LOT LINES AND 15 FEET IN WIDTH AND ADJOINING STREET LINES AND 10 FEET IN WIDTH AND ADJOINING REAR LOT LINES, UNLESS OTHERWISE SHOWN ON THIS PLAT.

● Denotes 1/2 inch iron pipe monument found as labeled

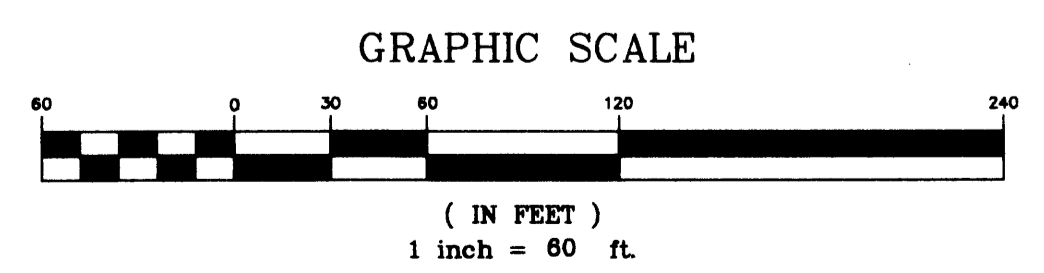
All monuments required by Minnesota Statute, and not shown on this plat, will be set within one year of the recording date of this plat, and shall be evidenced by a 1/2 inch by 18 inch iron pipe marked by RLS 41578.



# WHISPERING ASPEN



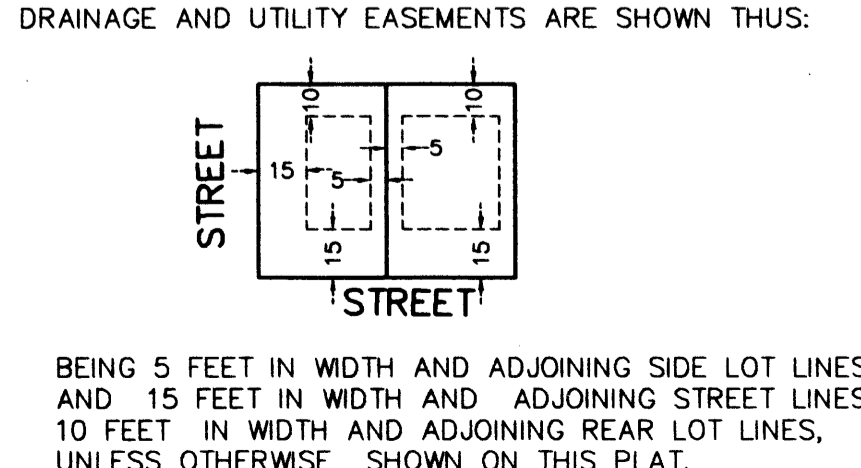
For the purposes of this plat the south line of the Northwest Quarter of Section 29, Township 34, Range 23, Anoka County, Minnesota is assumed to have a bearing of N 89°30'58" E.



All original MINARD LAKE ESTATES donations and dedications including drainage and utility easements with the exception of the right of way for 241st Avenue are vacated per City of East Bethel resolution number 2003-41.

○ Denotes 1/2 inch by 18 inch iron pipe monument set marked R.L.S. 41578  
● Denotes 1/2 inch iron pipe monument found as labeled

All monuments required by Minnesota Statute, and not shown on this plat, will be set within one year of the recording date of this plat, and shall be evidenced by a 1/2 inch by 18 inch iron pipe marked by RLS 41578.



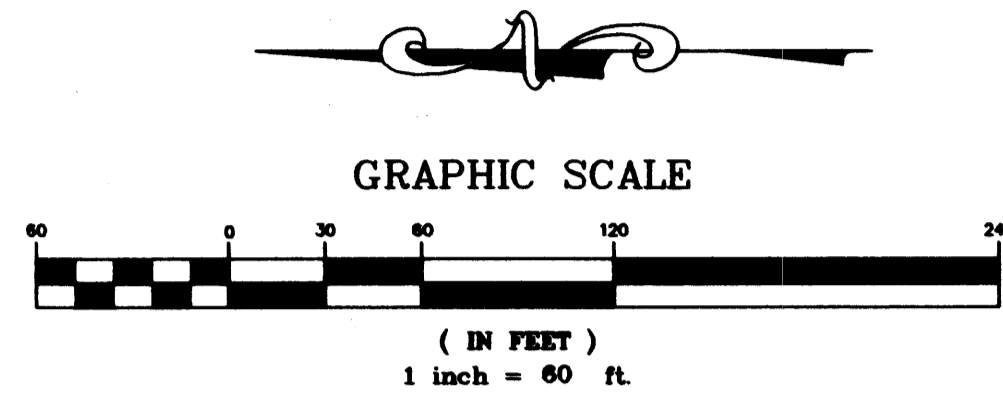
**E. G. RUD & SONS, INC.**  
LAND SURVEYORS

**OFFICIAL PLAT**

# WHISPERING ASPEN

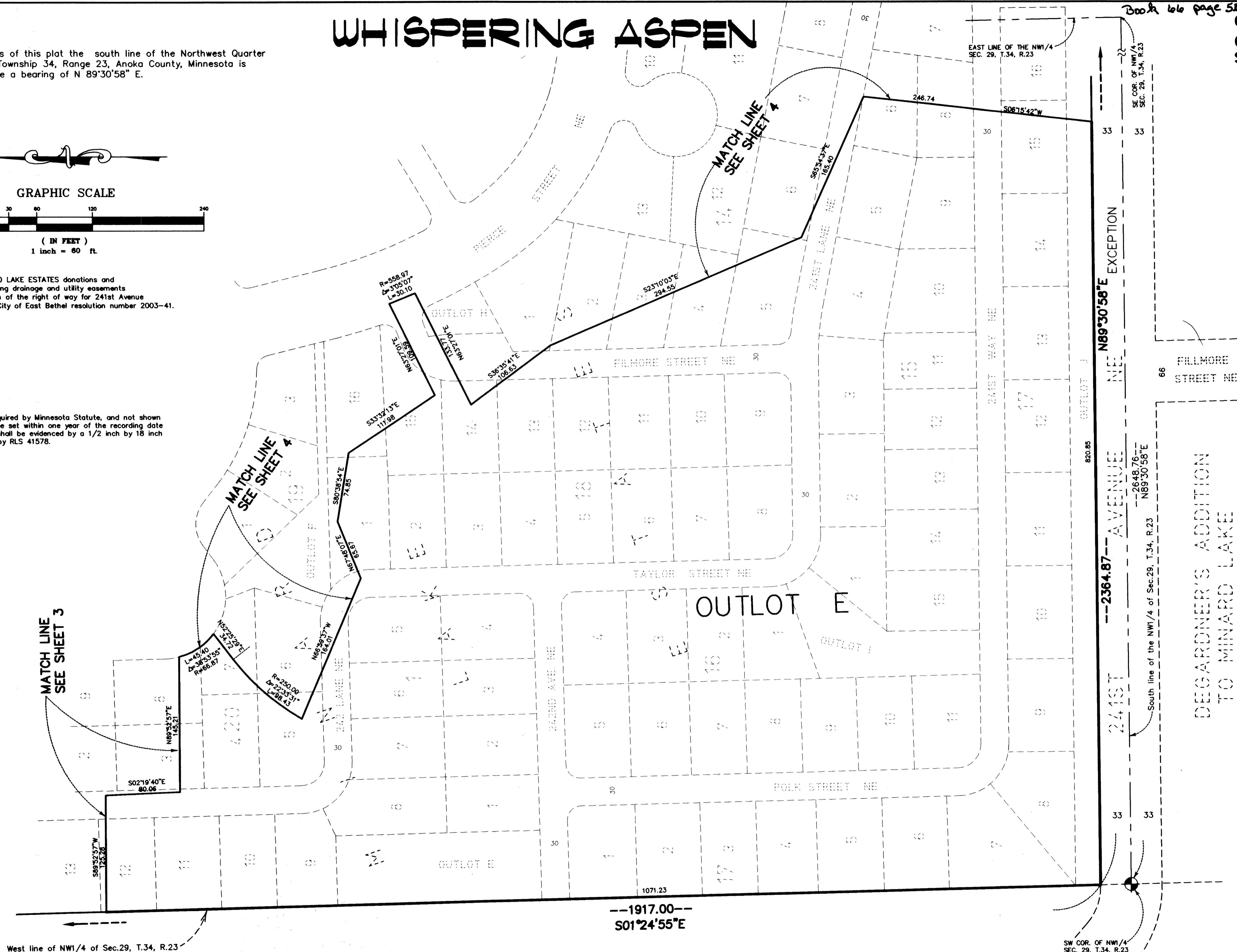
Book 166 page 58  
City of East Bethel  
County of Anoka  
Sec. 29, T. 34, R. 23

For the purposes of this plat the south line of the Northwest Quarter of Section 29, Township 34, Range 23, Anoka County, Minnesota is assumed to have a bearing of N 89°30'58" E.



All original MINARD LAKE ESTATES donations and dedications including drainage and utility easements with the exception of the right of way for 241st Avenue are vacated per City of East Bethel resolution number 2003-41.

All monuments required by Minnesota Statute, and not shown on this plat, will be set within one year of the recording date of this plat, and shall be evidenced by a 1/2 inch by 18 inch iron pipe marked by RLS 41578.



DEGARDNER'S ADDITION  
TO MINARD LAKE

**E. G. RUD & SONS, INC.**  
LAND SURVEYORS

