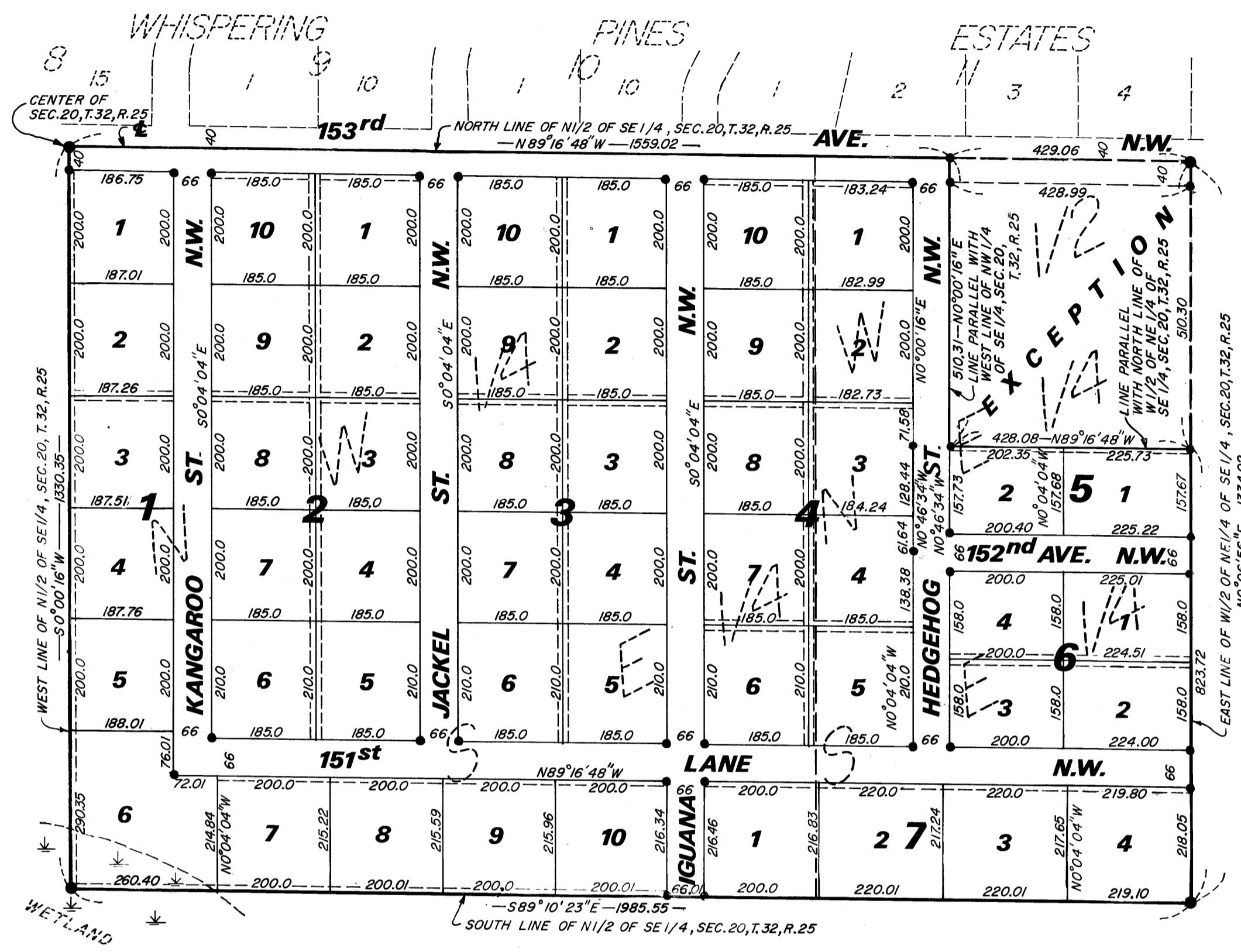


# WHISPERING PINES ESTATES-PLAT 2

## TOWNSHIP OF RAMSEY ANOKA COUNTY, MINNESOTA



KNOW ALL MEN BY THESE PRESENTS: THAT BARDIE M. WEIER, SINGLE, OWNER AND PROPRIETOR, AND E. V. BUILDERS, INC., A MINNESOTA CORPORATION, CONTRACT PURCHASERS, OF THE FOLLOWING DESCRIBED PROPERTY SITUATED IN THE COUNTY OF ANOKA AND STATE OF MINNESOTA TO-WIT: THE NORTHWEST 1/4 OF THE SOUTHEAST 1/4 AND THE WEST 1/2 OF THE NORTHEAST 1/4 OF THE SOUTHEAST 1/4 OF SECTION 20, TOWNSHIP 32, RANGE 25, EXCEPT THE FOLLOWING DESCRIBED TRACT: COMMENCING AT A POINT ON THE NORTH LINE OF SAID WEST 1/2 OF THE SOUTHEAST 1/4 OF THE SOUTHEAST 1/4 DISTANT 1599.02 FEET EAST FROM THE NORTHWEST CORNER OF SAID NORTHWEST 1/4 OF THE SOUTHEAST 1/4; THENCE SOUTH AND PARALLEL WITH THE WEST LINE OF SAID NORTHWEST 1/4 OF THE SOUTHEAST 1/4 A DISTANCE OF 510.31 FEET; THENCE EAST AND PARALLEL WITH THE NORTH LINE OF SAID WEST 1/2 OF THE NORTHEAST 1/4 OF THE SOUTHEAST 1/4 A DISTANCE OF 428.08 FEET, MORE OR LESS, TO THE EAST LINE OF SAID WEST 1/2 OF THE NORTHEAST 1/4 OF THE SOUTHEAST 1/4; THENCE NORTH ALONG SAID EAST LINE A DISTANCE OF 510.30 FEET TO THE NORTHEAST CORNER OF SAID WEST 1/2 OF THE NORTHEAST 1/4 OF THE SOUTHEAST 1/4; THENCE WEST ALONG THE NORTH LINE OF SAID WEST 1/2 OF THE NORTHEAST 1/4 OF THE SOUTHEAST 1/4 A DISTANCE OF 429.06 FEET, MORE OR LESS, TO THE POINT OF COMMENCEMENT.

HAVE CAUSED THE SAME TO BE SURVEYED AND PLATTED AS WHISPERING PINES ESTATES PLAT 2 AND DO HEREBY DONATE AND DEDICATE TO THE PUBLIC FOR PUBLIC USE FOREVER THE AVENUES, LANE AND STREETS AS SHOWN ON THE PLAT. ALSO DEDICATING THE EASEMENTS FOR UTILITY AND DRAINAGE PURPOSES AS SHOWN ON THE PLAT. IN WITNESS WHEREOF SAID BARDIE M. WEIER, SINGLE, HAS HEREUNTO SET HIS HAND AND SEAL ON THE 17th DAY OF July A.D. 1972. ALSO E. V. BUILDERS, INC., HAS CAUSED THESE PRESENTS TO BE SIGNED BY ITS PROPER OFFICER AND ITS CORPORATE SEAL TO BE AFFIXED ON THIS 19th DAY OF June A.D. 1972.

IN THE PRESENCE OF:  
James McNeilson AND Andrus H. Vick  
Timothy J. Leh AND M. C. Hoium

SIGNED:  
Bardie M. Weier  
BARDIE M. WEIER  
E. V. BUILDERS, INC.  
BY Wilfrid L. Beaudry PRESIDENT

STATE OF MINNESOTA )  
COUNTY OF ANOKA )  
ON THIS 7th DAY OF July A.D. 1972, BEFORE ME, A NOTARY PUBLIC WITHIN AND FOR SAID COUNTY AND STATE, PERSONALLY APPEARED BARDIE M. WEIER, SINGLE, TO ME PERSONALLY KNOWN TO BE THE PERSON DESCRIBED IN AND WHO EXECUTED THE FOREGOING INSTRUMENT AND HE AFFIRMS AND ACKNOWLEDGES THE SAME AS HIS OWN FREE ACT AND DEED.

MY COMMISSION EXPIRES \_\_\_\_\_  
MILDRED H. VICK  
Notary Public, Anoka County, Minn.  
My Commission Expires Nov. 3, 1974

STATE OF MINNESOTA )  
COUNTY OF ANOKA )  
ON THIS 19th DAY OF June A.D. 1972, BEFORE ME, A NOTARY PUBLIC WITHIN AND FOR SAID COUNTY AND STATE, PERSONALLY APPEARED WILFRID L. BEAUDRY, TO ME PERSONALLY KNOWN, WHO BEING BY ME DULY SWORN, DID SAY THAT HE IS THE PRESIDENT OF E. V. BUILDERS, INC., THE CORPORATION NAMED IN THE FOREGOING INSTRUMENT; THAT THE SEAL AFFIXED TO SAID INSTRUMENT IS THE CORPORATE SEAL OF SAID CORPORATION; AND THAT SAID INSTRUMENT WAS SIGNED AND SEALED IN BEHALF OF SAID CORPORATION BY AUTHORITY OF ITS BOARD OF DIRECTORS, AND SAID WILFRID L. BEAUDRY ACKNOWLEDGES SAID INSTRUMENT TO BE THE FREE ACT AND DEED OF SAID CORPORATION.

MY COMMISSION EXPIRES 3-29-1977  
JULIE MATHIAS  
Notary Public - Anoka County  
My Commission Expires Dec. 28, 1977

I HEREBY CERTIFY THAT I HAVE SURVEYED AND PLATTED THE LAND DESCRIBED IN THE DEDICATION ON THIS PLAT AS WHISPERING PINES ESTATES PLAT 2; THAT THIS PLAT IS A CORRECT REPRESENTATION OF SAID SURVEY; THAT ALL DISTANCES ARE CORRECTLY SHOWN ON SAID PLAT; THAT ALL MONUMENTS HAVE BEEN CORRECTLY PLACED IN THE GROUND AS SHOWN; AND THAT THE OUTSIDE BOUNDARIES OF THE LAND ARE CORRECTLY DESIGNATED ON SAID PLAT.

M. C. Hoium  
REGISTERED LAND SURVEYOR - MINN. REG. NO. 4427

STATE OF MINNESOTA )  
COUNTY OF ANOKA )  
SURVEYOR'S CERTIFICATE SUBSCRIBED AND SWORN TO BEFORE ME, A NOTARY PUBLIC WITHIN AND FOR SAID COUNTY AND STATE ON THIS 17th DAY OF April A.D. 1972.

MY COMMISSION EXPIRES Oct. 7, 1978  
KENNETH E. CAMPTON  
Notary Public, Anoka County, Minn.  
My Commission Expires Oct. 7, 1978

ANNEXED PLAT OF WHISPERING PINES ESTATES PLAT 2 WAS APPROVED BY THE TOWN BOARD OF THE TOWNSHIP OF RAMSEY AT A REGULAR MEETING THEREOF HELD THIS 17th DAY OF April A.D. 1972.

Robert E. Murphy  
CHAIRMAN  
James M. Peterson  
CLERK

ANNEXED PLAT OF WHISPERING PINES ESTATES PLAT 2 WAS APPROVED BY THE PLANNING COMMISSION OF THE TOWNSHIP OF RAMSEY AT A REGULAR MEETING THEREOF HELD THIS 11th DAY OF April A.D. 1972.

Gary R. Reinmann  
CHAIRMAN

RECOMMENDED FOR APPROVAL THIS 20th DAY OF June A.D. 1972.

C. J. Lundheim  
ANOKA COUNTY HIGHWAY ENGINEER

THIS PLAT WAS APPROVED AS TO FORM AND EXECUTION ON THIS 2nd DAY OF October A.D. 1972.  
Robert M. Johnson  
COUNTY ATTORNEY, ANOKA COUNTY, MINNESOTA

CHECKED AND APPROVED THIS 20th DAY OF June A.D. 1972.  
Roland W. Anderson  
ANOKA COUNTY SURVEYOR

THIS PLAT WAS APPROVED AND ACCEPTED BY THE BOARD OF COUNTY COMMISSIONERS OF THE COUNTY OF ANOKA, STATE OF MINNESOTA, AT A REGULAR MEETING THEREOF HELD THIS 20th DAY OF June A.D. 1972.

376924  
OFFICE OF REGISTER OF DEEDS  
STATE OF MINNESOTA, COUNTY OF ANOKA  
I hereby certify that the within instrument was filed in this office for record on the 21st day of OCT-6-1972 A.D., 1972 at 2:45 o'clock P.M., and was duly recorded in book 1 of Plat page 12.  
Fred J. O'Connell  
Register of Deeds  
By Margaret Russell  
Deputy

**N.C. HOIUM & ASSOCIATES, INC.**  
Engineers - Surveyors

"NO DELINQUENT TAXES AND TRANSFER ENTERED"  
OCT 6 1972  
Charles M. Hoium  
Auditor, Anoka County  
BY Arthur H. Weier  
Deputy