

WHITE PINE WILDERNESS FOURTH ADDITION

CITY OF ANDOVER
COUNTY OF ANOKA
SEC. 14, TWP. 32, RGE. 24

KNOW ALL PERSONS BY THESE PRESENTS: That Tollberg Homes, LLC, a Minnesota limited liability company, owner of the following described property:

Outlot A, WHITE PINE WILDERNESS THIRD ADDITION, according to the recorded plat thereof, Anoka County, Minnesota

Has caused the same to be surveyed and platted as WHITE PINE WILDERNESS FOURTH ADDITION and does hereby dedicate to the public for public use the public ways and the drainage and utility easements as shown on this plat.

In witness whereof said Tollberg Homes, LLC, a Minnesota limited liability company, has caused these presents to be signed by its proper officer this 18 day of MAY, 2018.

TOLLBERG HOMES, LLC

By Wade M. Tollefson
Wade M. Tollefson, Chief Manager

STATE OF Minnesota
COUNTY OF Anoka

This instrument was acknowledged before me on May 18, 2018 by Wade M. Tollefson, Chief Manager of Tollberg Homes, LLC, a Minnesota limited liability company, on behalf of the company.

By Cynthia J. Morical
Cynthia J. Morical
Notary Public, Hennepin County, Minnesota
My commission expires January 31, 2020

I Thomas R. Balluff do hereby certify that this plat was prepared by me or under my direct supervision; that I am a duly Licensed Land Surveyor in the State of Minnesota; that this plat is a correct representation of the boundary survey; that all mathematical data and labels are correctly designated on this plat; that all monuments depicted on this plat have been, or will be correctly set within one year; that all water boundaries and wet lands, as defined in Minnesota Statutes, Section 505.01, Subd. 3, as of the date of this certificate are shown and labeled on this plat; and all public ways are shown and labeled on this plat.

Dated this 18th day of MAY, 2018

By Thomas R. Balluff
Thomas R. Balluff, Licensed Land Surveyor
Minnesota License No. 40361

STATE of Minnesota
COUNTY of Anoka

This instrument was acknowledged before me on May 18th, 2018 by Thomas R. Balluff.

By Cynthia J. Morical
Cynthia J. Morical
Notary Public, Hennepin County, Minnesota
My commission expires January 31, 2020

CITY COUNCIL, CITY OF ANDOVER, MINNESOTA

This plat of WHITE PINE WILDERNESS FOURTH ADDITION was approved and accepted by the City Council of the City of Andover, Minnesota at a regular meeting thereof held this 30th day of April, 2018 and said plat is in compliance with the provisions of Minnesota Statutes, Section 505.03, Subd. 2.

CITY COUNCIL, CITY OF ANDOVER, MINNESOTA

By Julie Orndorff Mayor
By [Signature] Clerk

COUNTY SURVEYOR

I hereby certify that in accordance with Minnesota Statutes, Section 505.021, Subd. 11, this plat has been reviewed and approved this 29th day of May, 2018.

By Charles F. Gitzen
Charles F. Gitzen
Anoka County Surveyor

COUNTY AUDITOR/TREASURER

Pursuant to Minnesota Statutes, Section 505.021, Subd. 9, taxes payable in the year 2018 on the land hereinbefore described have been paid. Also, pursuant to Minnesota Statutes, Section 272.12, there are no delinquent taxes and transfer entered this 29th day of May, 2018.

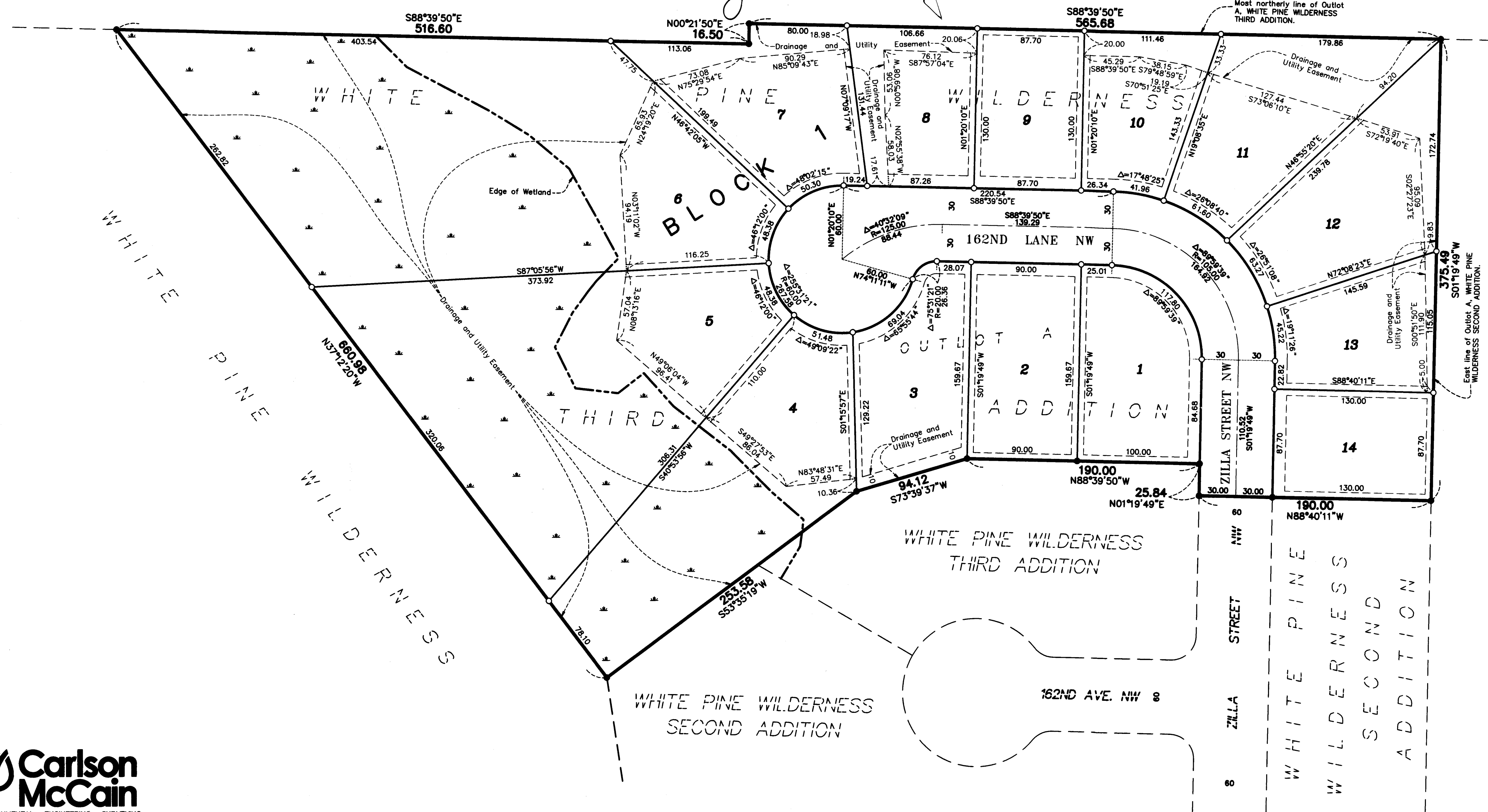
By Jonell M. Sawyer
Jonell M. Sawyer
Property Tax Administrator
By [Signature] Deputy

COUNTY RECORDER/REGISTRAR OF TITLES

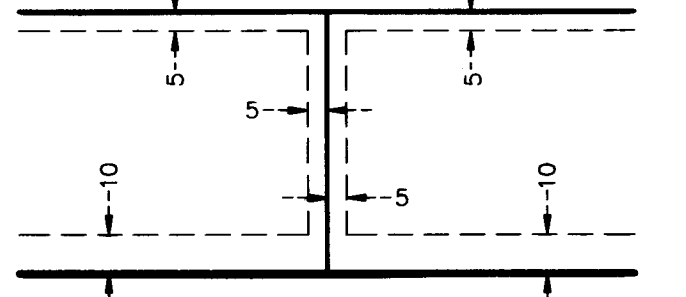
County of Anoka, State of Minnesota

I hereby certify that this plat of WHITE PINE WILDERNESS FOURTH ADDITION was filed in the office of the County Recorder/Registrar of Titles for public record on this 29th day of May, 2018 at 9:39 o'clock A.M. and was duly recorded as Document Number 200289.002.

By Jonell M. Sawyer
Jonell M. Sawyer
County Recorder/Registrar of Titles
By [Signature] Deputy



DRAINAGE AND UTILITY EASEMENTS ARE SHOWN THUS:



being 5 feet in width, and adjoining side lot lines, and rear lot lines, and 10 feet in width and adjoining right of way lines unless otherwise shown on this plat.

○ Denotes 5/8 inch by 14 inch Rebar, set or to be set within one year of recording of this plat and marked with license number 40361

● Denotes Found Iron Monument

■ Denotes Wetlands delineated by Kjolhaug Environmental Services Company in 2017.

For the purposes of this plat, the most northerly line of Outlot A, WHITE PINE WILDERNESS THIRD ADDITION, is assumed to have a bearing of South 88 degrees 39 minutes 50 seconds East.

