

WHITE PINE WILDERNESS THIRD ADDITION

CITY OF ANDOVER
COUNTY OF ANOKA
SEC. 14, TWP. 32, RGE. 24

KNOW ALL PERSONS BY THESE PRESENTS: That Karen A. Emmerich, a single person, owner of the following described property:

Outlot A, WHITE PINE WILDERNESS SECOND ADDITION, according to the recorded plat thereof, Anoka County, Minnesota

Has caused the same to be surveyed and plotted as WHITE PINE WILDERNESS THIRD ADDITION and does hereby dedicate to the public for public use the drainage and utility easements as shown on this plat.

In witness whereof said Karen A. Emmerich, a single person, has hereunto set her hand this 10th day of November 2017.

Karen A. Emmerich
Karen A. Emmerich

STATE OF Minnesota
COUNTY OF Anoka

This instrument was acknowledged before me on November 10, 2017 by Karen A. Emmerich, a single person.

Richard C. Thomas
Richard C. Thomas
Notary Public, Anoka
My commission expires 1-31-18

I Thomas R. Balluff do hereby certify that this plat was prepared by me or under my direct supervision; that I am a duly Licensed Land Surveyor in the State of Minnesota; that this plat is a correct representation of the boundary survey; that all mathematical data and labels are correctly designated on this plat; that all monuments depicted on this plat have been, or will be correctly set within one year; that all water boundaries and wet lands, as defined in Minnesota Statutes, Section 505.01, Subd. 3, as of the date of this certificate are shown and labeled on this plat; and all public ways are shown and labeled on this plat.

Dated this 10th day of NOVEMBER 2017

Thomas R. Balluff
Thomas R. Balluff, Licensed Land Surveyor
Minnesota License No. 40361

STATE OF Minnesota
COUNTY OF Anoka

This instrument was acknowledged before me on November 10th, 2017 by Thomas R. Balluff.

Dawn Meyers
DAWN MEYERS
Notary Public, ANOKA
My commission expires January 31, 2018

CITY COUNCIL, CITY OF ANDOVER, MINNESOTA

This plat of WHITE PINE WILDERNESS THIRD ADDITION was approved and accepted by the City Council of the City of Andover, Minnesota at a regular meeting thereof held this 16th day of November 2017, and said plat is in compliance with the provisions of Minnesota Statutes, Section 505.03, Subd. 2.

CITY COUNCIL, CITY OF ANDOVER, MINNESOTA

By: Jillie Orndorff Mayor By: [Signature] Clerk

COUNTY SURVEYOR

I hereby certify that in accordance with Minnesota Statutes, Section 505.021, Subd. 11, this plat has been reviewed and approved this 13th day of November 2017.

Larry D. Ludwig
Larry D. Ludwig
Anoka County Surveyor

COUNTY AUDITOR/TREASURER

Pursuant to Minnesota Statutes, Section 505.021, Subd. 9, taxes payable in the year 2017 on the land hereinbefore described have been paid. Also, pursuant to Minnesota Statutes, Section 272.12, there are no delinquent taxes and transfer entered this 13 day of November, 2017.

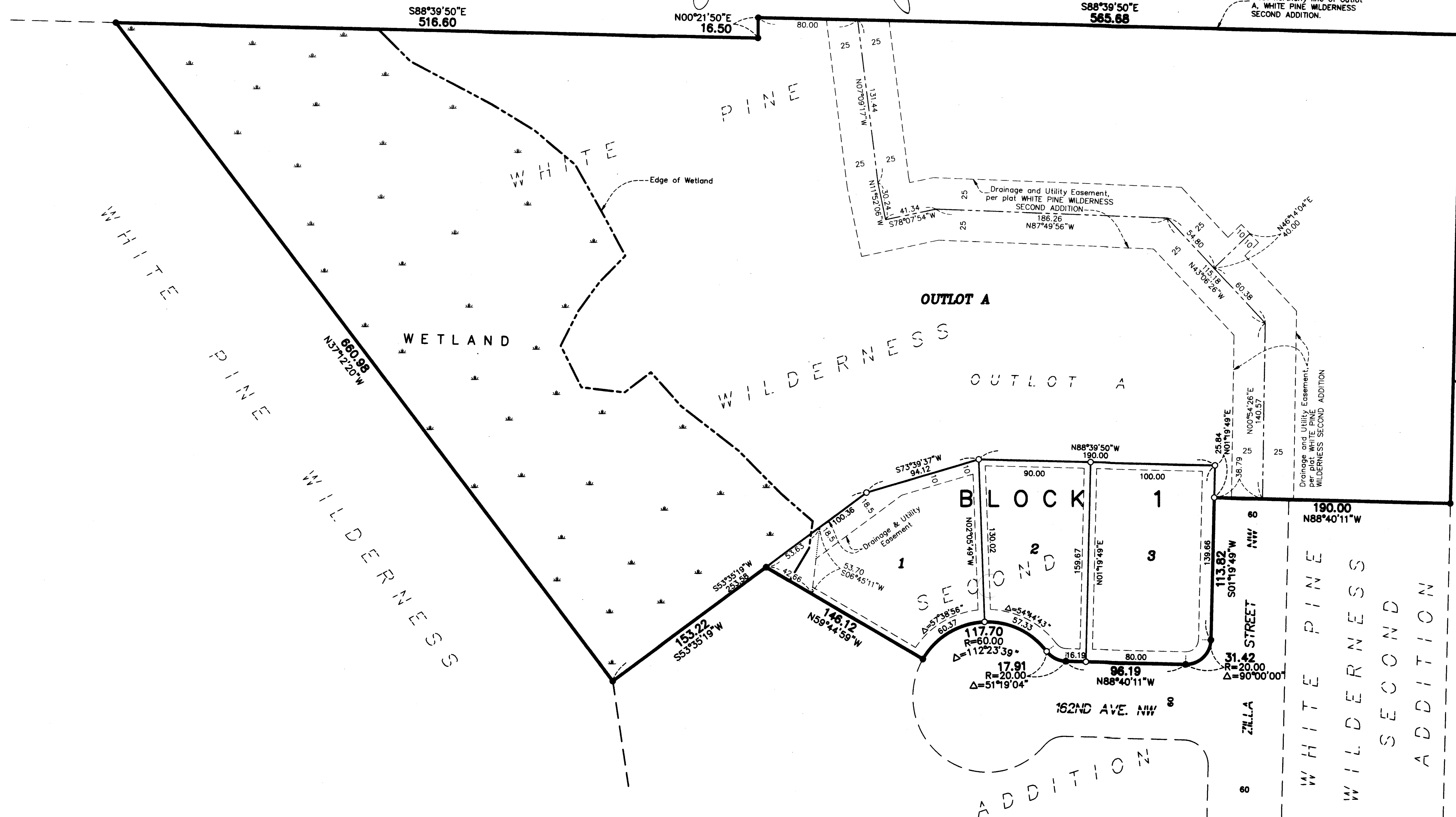
Jonell M. Sawyer
Jonell M. Sawyer
Property Tax Administrator
By: [Signature] Deputy

COUNTY RECORDER/REGISTRAR OF TITLES

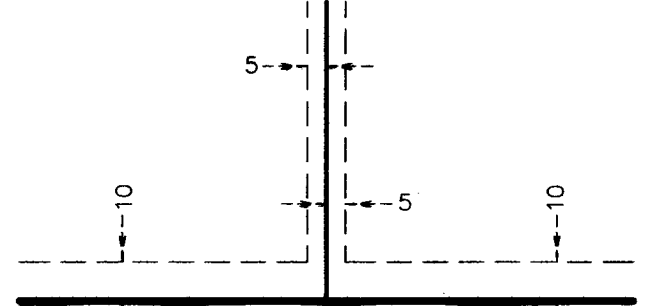
County of Anoka, State of Minnesota

I hereby certify that this plat of WHITE PINE WILDERNESS THIRD ADDITION was filed in the office of the County Recorder/Registrar of Titles for public record on this 13 day of November, 2017, at 2:29 o'clock P.M. and was duly recorded as Document Number 2186178.001

Jonell M. Sawyer
Jonell M. Sawyer
County Recorder/Registrar of Titles
By: [Signature] Deputy



DRAINAGE AND UTILITY EASEMENTS ARE SHOWN THUS:



being 5 feet in width, and adjoining lot lines, and 10 feet in width and adjoining right of way lines unless otherwise shown on this plat.

○ Denotes 5/8 inch by 14 inch Rebar, set or to be set within one year of recording of this plat and marked with license number 40361

● Denotes Found Iron Monument

▭ Denotes Wetlands delineated by Kjaohaug Environmental Services Company in 2017.

For the purposes of this plat, the most northerly line of Outlot A, WHITE PINE WILDERNESS SECOND ADDITION, is assumed to have a bearing of South 88 degrees 39 minutes 50 seconds East.

