

WHITETAIL CROSSING 2ND ADDITION

KNOW ALL PERSONS BY THESE PRESENTS: That Whitetail Crossing Investment LLC, a Minnesota limited liability company, owner of the following described property:

The North 528.00 feet of the Northwest Quarter of the Southeast Quarter of Section 19, Township 32, Range 23, Anoka County, Minnesota

Has caused the same to be surveyed and platted as WHITETAIL CROSSING 2ND ADDITION and does hereby dedicate to the public for public use the public ways and the drainage and utility easements as shown on this plat.

In witness whereof said Whitetail Crossing Investment LLC, a Minnesota limited liability company, has caused these presents to be signed by its proper officer this 11 day of June, 2018.

I Thomas R. Balluff do hereby certify that this plat was prepared by me or under my direct supervision; that I am a duly Licensed Land Surveyor in the State of Minnesota; that this plat is a correct representation of the boundary survey; that all mathematical data and labels are correctly designated on this plat; that all monuments depicted on this plat have been, or will be correctly set within one year; that all water boundaries and wet lands, as defined in Minnesota Statutes, Section 505.01, Subd. 3, as of the date of this certificate are shown and labeled on this plat; and all public ways are shown and labeled on this plat.

Dated this 6th day of JUNE, 2018.

Thomas R. Balluff
Thomas R. Balluff, Licensed Land Surveyor
Minnesota License No. 40361

COUNTY SURVEYOR

I hereby certify that in accordance with Minnesota Statutes, Section 505.021, Subd. 11, this plat has been reviewed and approved this 10th day of July, 2018.

By *Charles F. Gitzon*
Charles F. Gitzon
Anoka County Surveyor

COUNTY AUDITOR/TREASURER

Pursuant to Minnesota Statutes, Section 505.021, Subd. 9, taxes payable in the year 2018 on the land hereinbefore described have been paid. Also, pursuant to Minnesota Statutes, Section 272.12, there are no delinquent taxes and transfer entered this 10 day of July, 2018.

Jonell M. Dauwey
Jonell M. Dauwey
Property Tax Administrator
By *Becky Hanson* Deputy

COUNTY RECORDER/REGISTRAR OF TITLES

County of Anoka, State of Minnesota
I hereby certify that this plat of WHITETAIL CROSSING 2ND ADDITION was filed in the office of the County Recorder/Registrar of Titles for public record on this 10 day of July, 2018, at 9:33 o'clock A.M. and was duly recorded as Document Number 2203679.001.

Jonell M. Dauwey
Jonell M. Dauwey
County Recorder/Registrar of Titles
By *Becky Hanson* Deputy

WHITETAIL CROSSING INVESTMENT LLC
Kerry L. Gerard
Kerry L. Gerard, Chief Manager

STATE OF MN
COUNTY OF Anoka

This instrument was acknowledged before me on June 11, 2018 by Kerry L. Gerard, Chief Manager of Whitetail Crossing Investment LLC, a Minnesota limited liability company.

Wendy Gerard
Wendy Gerard
Notary Public, Anoka County, Minnesota
My commission expires January 31, 2020

STATE OF Minnesota
COUNTY OF Anoka

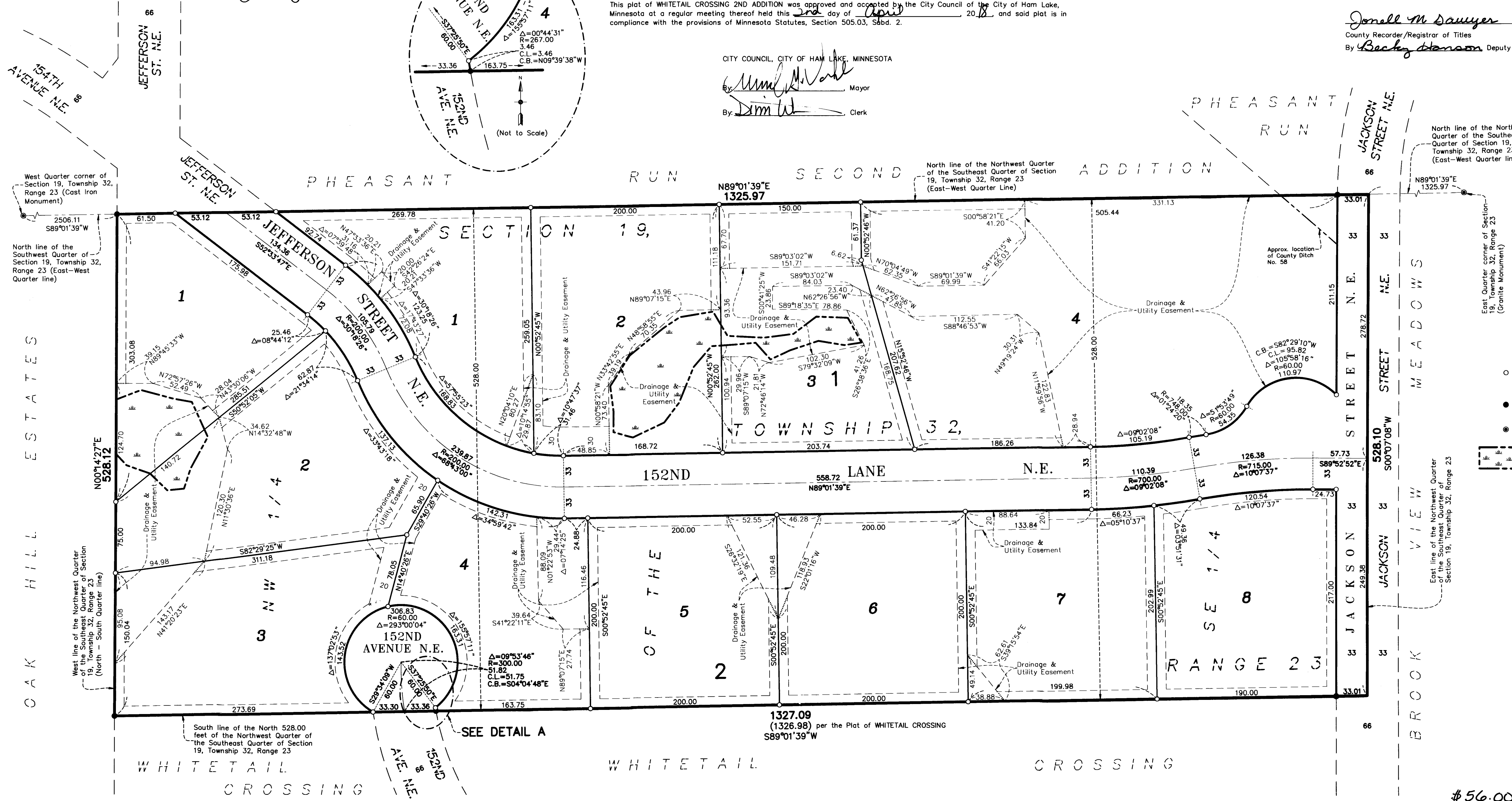
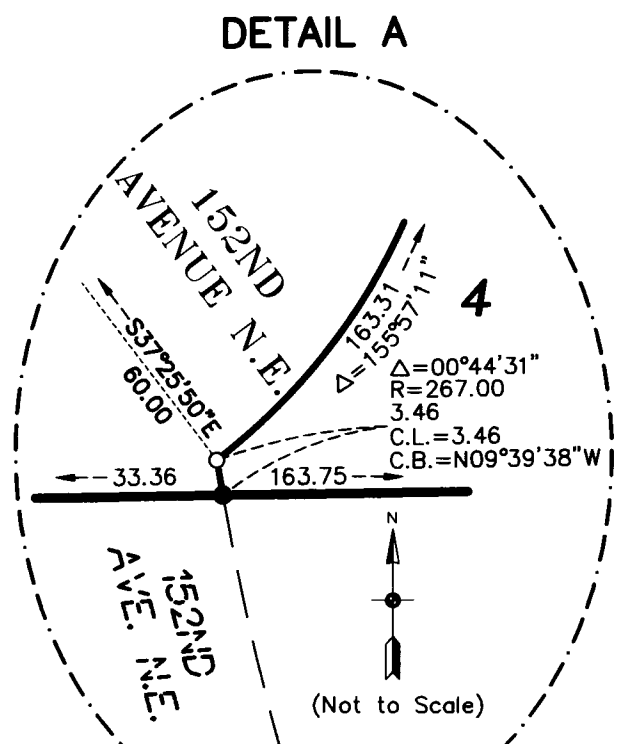
This instrument was acknowledged before me on June 6th, 2018 by Thomas R. Balluff.

Cynthia J. Morical
Cynthia J. Morical
Notary Public, Hennepin County, Minnesota
My commission expires January 31, 2020

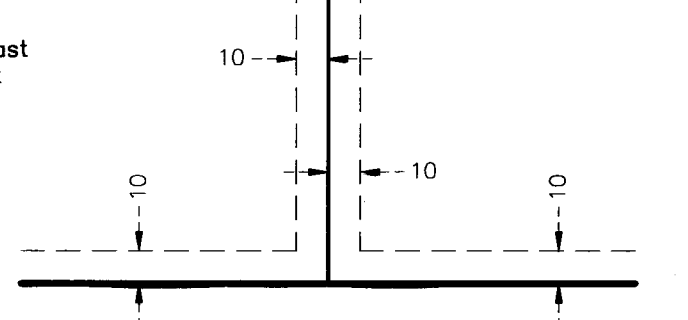
CITY COUNCIL, CITY OF HAM LAKE, MINNESOTA

This plat of WHITETAIL CROSSING 2ND ADDITION was approved and accepted by the City Council of the City of Ham Lake, Minnesota at a regular meeting thereof held this 2nd day of April, 2018, and said plat is in compliance with the provisions of Minnesota Statutes, Section 505.03, Subd. 2.

CITY COUNCIL, CITY OF HAM LAKE, MINNESOTA
By *Michelle Wahl* Mayor
By *Jim W.* Clerk



DRAINAGE AND UTILITY EASEMENTS ARE SHOWN THIS:



being 10 feet in width, and adjoining all lot lines, unless otherwise shown on this plat.

For the purposes of this plat, the North line of the Northwest Quarter of the Southeast Quarter of Section 19, Township 32, Range 23 is assumed to have a bearing of North 89 degrees 01 minutes 39 seconds East.

- Denotes 5/8 inch by 14 inch Rebar, set or to be set within one year of recording of this plat and marked with license number 40361
- Denotes Found Iron Monument
- Denotes Found Anoka County Monument
- Denotes Wetlands delineated by Kjelhaug Environmental Services Company in 2016

