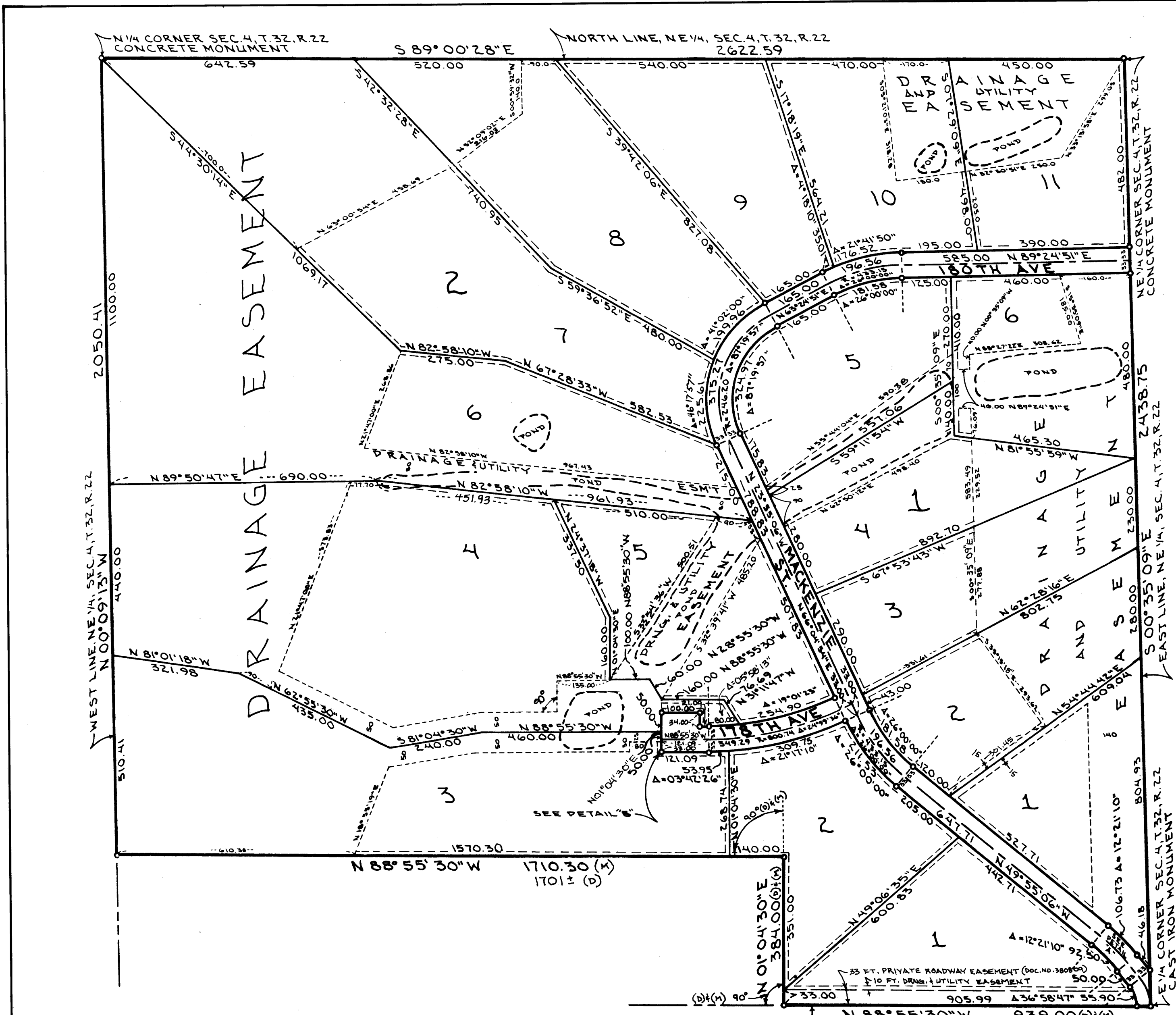


TOWNSHIP OF COLUMBUS
COUNTY OF ANOKA

WILDLIFE



KNOW ALL PERSONS BY THESE PRESENTS: That Elsworth H. Rehbein and Emily Rehbein, husband and wife, and Kenneth E. Rehbein and Ardell A. Rehbein, husband and wife, and Gerald S. Matejko and Dorothy L. Matejko, husband and wife, owners of, and First Trust Company, Inc., a Minnesota corporation, as personal representative of the estate of Edwin H. Witte (deceased), mortgagee of the following described property, situated in the County of Anoka, State of Minnesota, to wit:

The Northeast Quarter of Section 4, Township 32, Range 22, except that part of said Northeast Quarter described as follows: That part of the South Half of the Northeast Quarter of Section 4, Township 32, Range 22, Anoka County, Minnesota, described as follows: Commencing at the East-West corner of Section 4; thence West, along the East-West Quarter line of Section 4, a distance of 939 feet to the point of beginning; thence North, deflecting 90 degrees to the right, a distance of 384 feet; thence West, deflecting 90 degrees to the left, a distance of 1701 feet, more or less, to the West line of the South Half of the Northeast Quarter of Section 4; thence Southerly, along said West line, a distance of 384 feet, more or less, to the Southwest corner of the Northeast Quarter of Section 4; thence East, along the East-West Quarter line of Section 4, a distance of 1701 feet, more or less to the point of beginning. All in Anoka County, Minnesota.

Have caused the same to be surveyed and platted as WILDLIFE, and do hereby donate and dedicate to the public, for public use forever the Street, Avenues, and drainage and utility easements, as shown on the plat.

In witness whereof, said Elsworth H. Rehbein and Emily Rehbein, husband and wife, and Kenneth E. Rehbein and Ardell A. Rehbein, husband and wife, and Gerald S. Matejko and Dorothy L. Matejko, husband and wife, have hereunto set their hands this 30th day of November, 19 87.

Elsworth H. Rehbein
Elsworth H. Rehbein
Emily Rehbein
Emily Rehbein
Kenneth E. Rehbein
Kenneth E. Rehbein
Ardell A. Rehbein
Ardell A. Rehbein
Gerald S. Matejko
Gerald S. Matejko
Dorothy L. Matejko
Dorothy L. Matejko

In witness whereof First Trust Company, Inc., a Minnesota corporation, as personal representative of the estate of Edwin H. Witte (deceased), has caused these presents to be signed by its proper officers and its corporate seal affixed this 30th day of November, 19 87.

FIRST TRUST COMPANY, INC. AS PERSONAL REPRESENTATIVE OF THE ESTATE OF EDWIN H. WITTE (DECEASED)
Thayer J. Jorgensen, Officer
James A. P., Officer

STATE OF MINNESOTA)
COUNTY OF ANOKA) The foregoing instrument was acknowledged before me this 30th day of November, 19 87, by Elsworth H. Rehbein and Emily Rehbein, husband and wife, and Kenneth E. Rehbein and Ardell A. Rehbein, husband and wife, and Gerald S. Matejko and Dorothy L. Matejko, husband and wife.

James H. Gieseler
Notary Public Anoka County, Minnesota
My Commission Expires December 14, 1992

STATE OF MINNESOTA)
COUNTY OF RAMSEY) The foregoing instrument was acknowledged before me this 30th day of November, 19 87, by R. J. Hall, AJP and Nancy H. Frankenberg, VP of First Trust Company, Inc., a Minnesota corporation, as personal representative of the estate of Edwin H. Witte (deceased), on behalf of the Estate.

James H. Gieseler
Notary Public Anoka County, Minnesota
My Commission Expires December 14, 1992

I, James L. Kurth, do hereby certify that I have surveyed and platted the property described on this plat as WILDLIFE, that this plat is a correct representation of said survey; that all distances are correctly shown in feet and hundredths of a foot; that all monuments for the guidance of future surveys have been correctly placed in the ground as shown on the plat; that all outside boundary lines are correctly shown on the plat; and that there are no wet lands or public highways to be designated other than as shown.

James L. Kurth
James L. Kurth, Land Surveyor
Minnesota Registration No. 4332

STATE OF MINNESOTA)
COUNTY OF ANOKA) The above certificate subscribed and sworn to before me this 14th day of October, 19 87, by James L. Kurth, Land Surveyor.

Karen J. Kurth
Notary Public, Anoka County, Minnesota
My Commission Expires February 13, 1991

This plat of WILDLIFE was approved and accepted by the Town Board of Supervisors of the Township of Columbus, Minnesota, at a regular meeting thereof held this 25th day of November, 19 87. If applicable, the written comments and recommendations of the Commissioner of Transportation and the County Highway Engineer have been received by the Clerk or the prescribed 30 day period has elapsed without receipt of such comments and recommendations, as provided by Minnesota Statutes, Section 505.03, Subdivision 2.

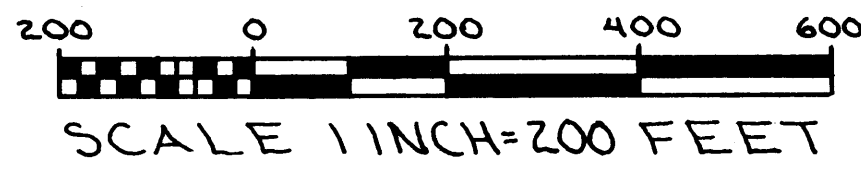
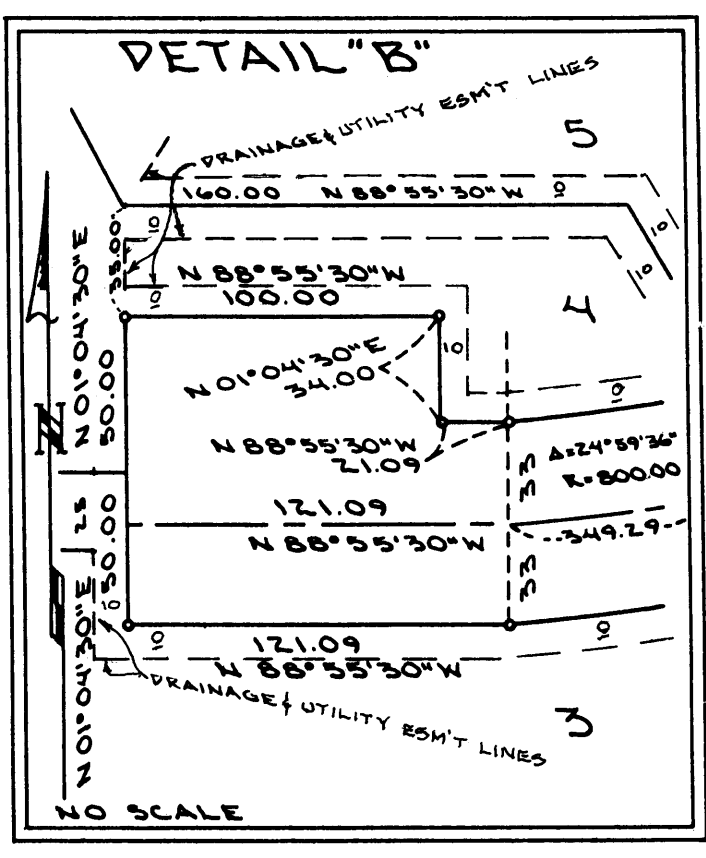
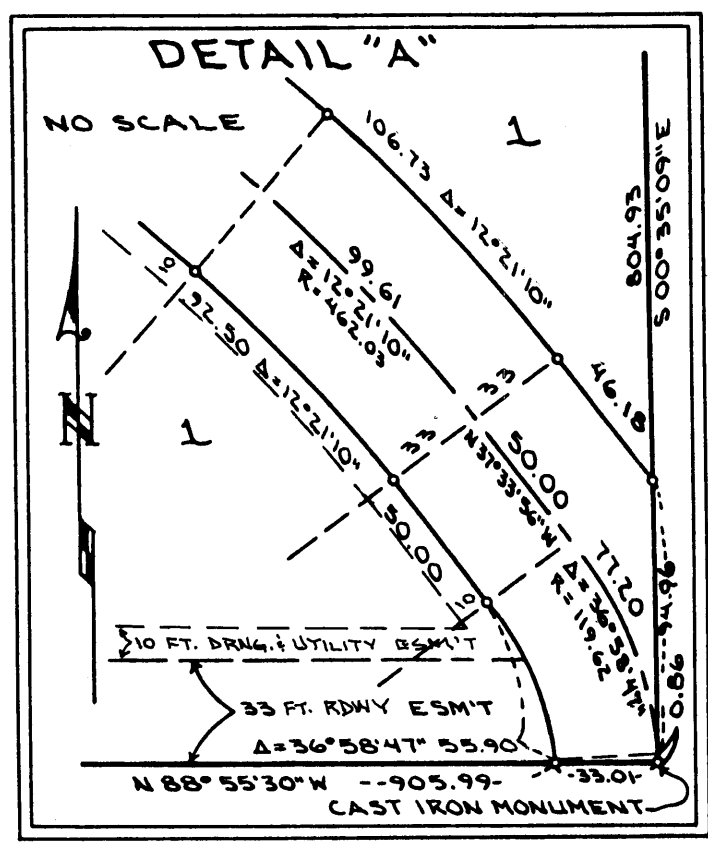
Thomas Klassen, Chairman
Barbara A. Mastellen, Clerk
Recommended for approval this 3rd day of December, 19 87.

Paul K. Klined
County Highway Engineer, Anoka County, Minnesota
This plat was approved as to form and execution this 14th day of December, 19 87.

Anthony C. Palumbo, Assistant
County Attorney, Anoka County, Minnesota
Checked and approved this 15th day of Dec, 19 87.

Wm. D. Anderson
County Surveyor, Anoka County, Minnesota
I HEREBY CERTIFY THAT THE TAXES PAID BY THE YEAR 1987 ON THE LANDS DESCRIBED WITHIN ARE PAID
Donald C. Bailey, Anoka County Treasurer
J. Henry Deputy

This plat of WILDLIFE was approved and accepted by the Board of County Commissioners of the County of Anoka, State of Minnesota at a regular meeting thereof held this 8th day of December, 19 87.
John Jay McQuinden, County Administrator

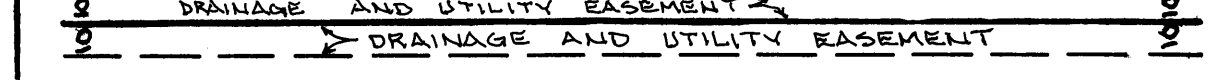


O DENOTES 1/2" IRON MONUMENT SET AND CAPPED WITH MN. REG. NO. 5332 UNLESS OTHERWISE SHOWN ON THE PLAT
--- DENOTES APPROX. EDGE OF POND

FOR PURPOSES OF THIS PLAT THE EAST LINE OF THE N.E. 1/4 IS ASSUMED TO BEAR S 00° 35' 09" E

(D) = DEED DIMENSION
(M) = MEASURED DISTANCE

DRAINAGE & UTILITY EASEMENTS BEING 10 FEET IN WIDTH AND ADJOINING ALL LOT LINES UNLESS OTHERWISE SHOWN.



OFFICE OF COUNTY RECORDER
STATE OF MINNESOTA, COUNTY OF ANOKA
I hereby certify that the within instrument was filed in the office for record on the DEC 15, 1987 at 1:45 o'clock P.M., and was duly recorded in book 38 of Page 43
Paul J. Omdahl, County Recorder
By *Sue Kay Ege*, Deputy

790657 vice
Thomas Klassen, Chairman
Barbara A. Mastellen, Clerk
Recommended for approval this 3rd day of December, 19 87.
Paul K. Klined
County Highway Engineer, Anoka County, Minnesota
This plat was approved as to form and execution this 14th day of December, 19 87.
Anthony C. Palumbo, Assistant
County Attorney, Anoka County, Minnesota
Checked and approved this 15th day of Dec, 19 87.
Wm. D. Anderson
County Surveyor, Anoka County, Minnesota
I HEREBY CERTIFY THAT THE TAXES PAID BY THE YEAR 1987 ON THE LANDS DESCRIBED WITHIN ARE PAID
Donald C. Bailey, Anoka County Treasurer
J. Henry Deputy
This plat of WILDLIFE was approved and accepted by the Board of County Commissioners of the County of Anoka, State of Minnesota at a regular meeting thereof held this 8th day of December, 19 87.
John Jay McQuinden, County Administrator