

WILLOWBROOK 2ND ADDITION

BK 21 of Torrens Pg. 16

CITY OF BLAINE
COUNTY OF ANOKA
SEC. 12, TWP. 31, RNG. 23

KNOW ALL MEN BY THESE PRESENTS: That Woodside Willowbrook, LLC, a Minnesota limited liability company, owner of the following described property situated in the County of Anoka, State of Minnesota, to wit:

Outlots C, E, G, and I, WILLOWBROOK, according to the recorded plat thereof, Anoka County, Minnesota.

Has caused the same to be surveyed and platted as WILLOWBROOK 2ND ADDITION and does hereby donate and dedicate to the public for public use forever the drainage and utility easements as shown on this plat.

In witness whereof said Woodside Willowbrook, LLC, a Minnesota limited liability company, has caused these presents to be signed by its proper officer this 25th day of August, 2009.

WOODSIDE WILLOWBROOK, LLC

Dale R. Wills
Dale R. Wills, as President

STATE OF MINNESOTA
COUNTY OF ANOKA

The foregoing instrument was acknowledged before me this 25th day of August, 2009 by Dale R. Wills, as president of Woodside Willowbrook, LLC, a Minnesota limited liability company, on behalf of said company.

David Patberg
DAVID PATBERG
Notary Public, ANOKA County, Minnesota
My Commission Expires 1-31-2010

I Peter J. Hawkinson, a duly Licensed Land Surveyor under the laws of the State of Minnesota, do hereby certify that I have surveyed or directly supervised the survey of the property described on this plat; prepared this plat or directly supervised the preparation of this plat of WILLOWBROOK 2ND ADDITION; that this plat is a correct representation of the boundary survey; that all mathematical data and labels are correctly designated on this plat; that all monuments depicted on this plat have been or will be correctly set within one year as indicated on this plat; that all water boundaries and wet lands, as defined in Minnesota Statutes, Section 505.01, Subd. 3, as of the date of this certificate are shown and labeled on this plat; and all public ways are shown and labeled on this plat.

Dated this 23 day of July, 2009.

Peter J. Hawkinson
Peter J. Hawkinson, Professional Land Surveyor
Minnesota License Number 42299

STATE OF MINNESOTA
COUNTY OF DAKOTA

The foregoing surveyors certificate was acknowledged before me this 23 day of July, 2009 by Peter J. Hawkinson, Professional Land Surveyor, Minnesota License No. 42299.

Nicholas J. Kalsrud
Nicholas J. Kalsrud
Notary Public, Dakota County, Minnesota
My Commission Expires 1-31-2010

CITY COUNCIL
BLAINE, MINNESOTA

This plat of WILLOWBROOK 2ND ADDITION was approved and accepted by the City Council of the City of Blaine, Minnesota, at a regular meeting thereof held this 9th day of July, 2009, and said Plat is in compliance with the provisions of Minnesota Statutes, Section 505.03, Subd. 2.

By: John Egan, Mayor

By: Jane M. Cross, Clerk

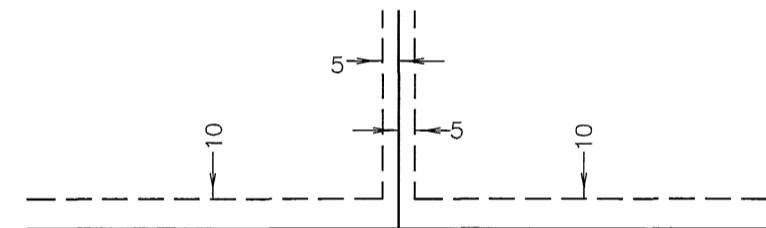
Checked and approved this 28th day of August, 2009.

By: Larry D. Holium
Larry D. Holium, Anoka County Surveyor

by Charles F. Bitgen, Deputy

I HEREBY CERTIFY THAT THE CURRENT AND DELINQUENT TAXES ON THE LANDS DESCRIBED WITHIN ARE PAID AND THE TRANSFER IS ENTERED Aug 25, 2009
M. GREEN J. DEVINE
PROPERTY TAX ADMINISTRATOR
BY: John Egan
DEPUTY PROPERTY TAX ADMINISTRATOR

DRAINAGE AND UTILITY EASEMENTS ARE SHOWN THUS:

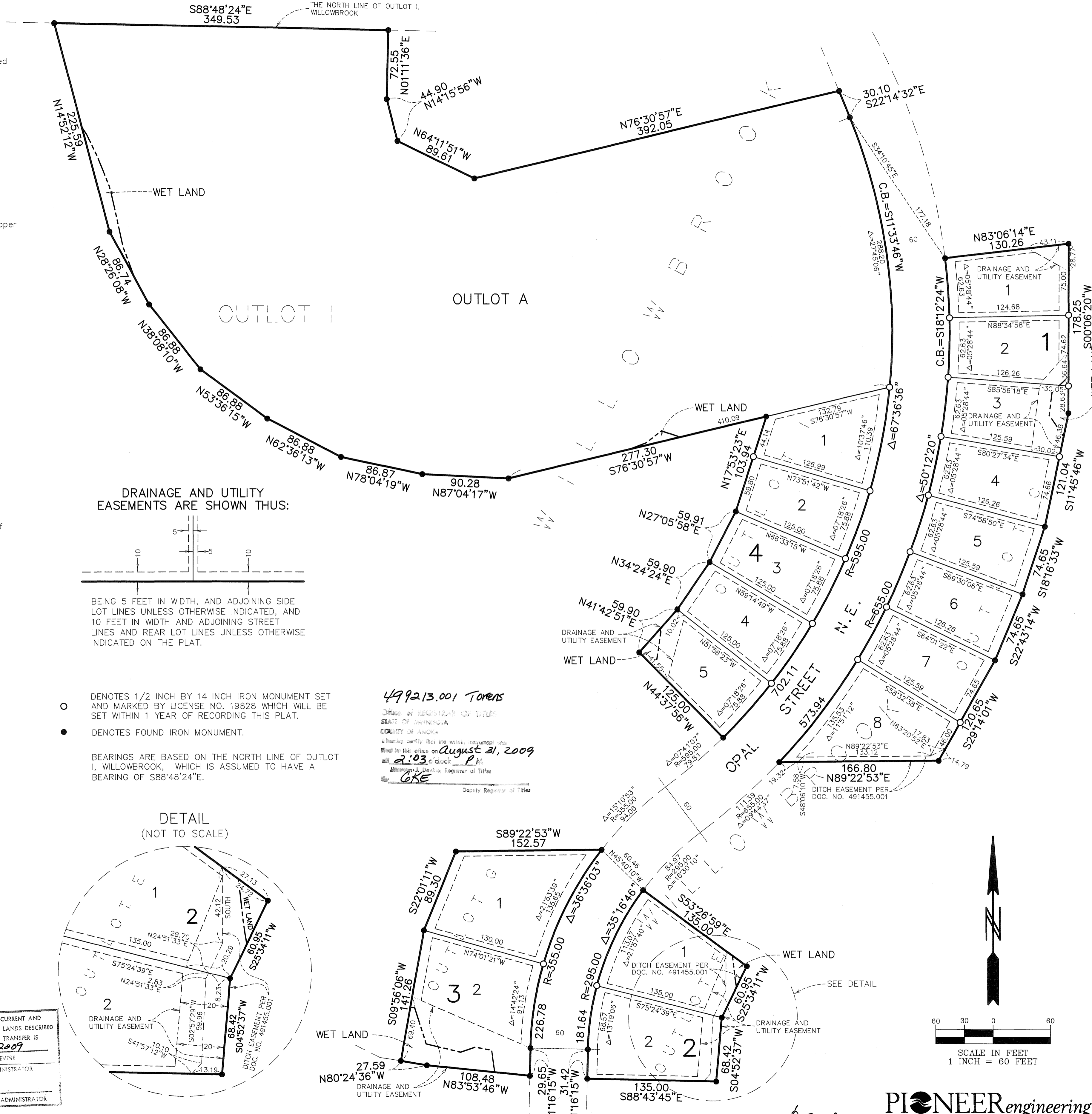
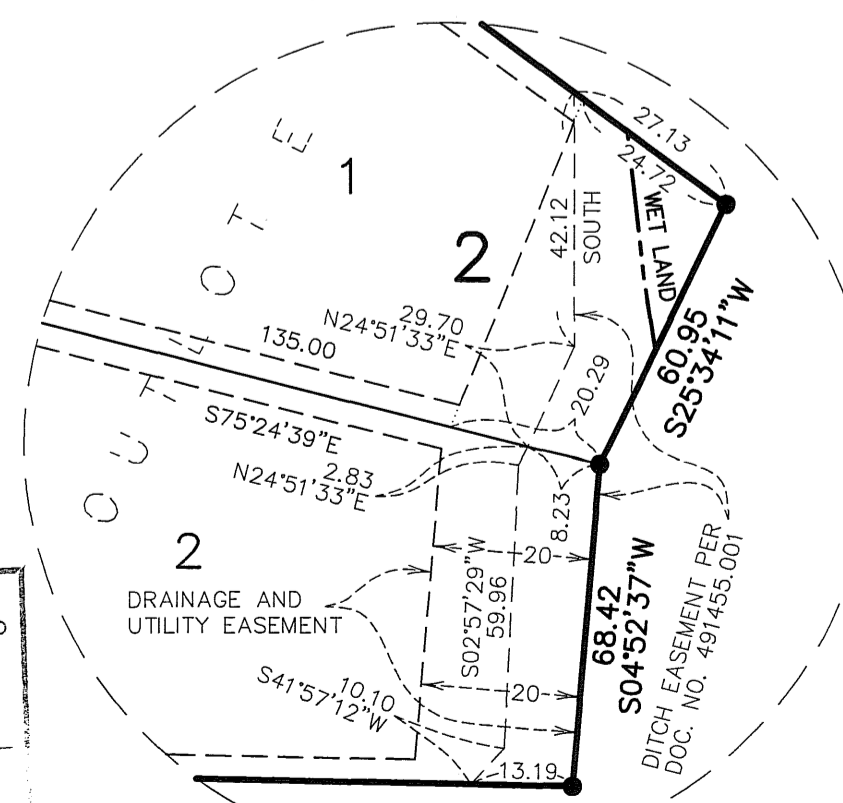


BEING 5 FEET IN WIDTH, AND ADJOINING SIDE LOT LINES UNLESS OTHERWISE INDICATED, AND 10 FEET IN WIDTH AND ADJOINING STREET LINES AND REAR LOT LINES UNLESS OTHERWISE INDICATED ON THE PLAT.

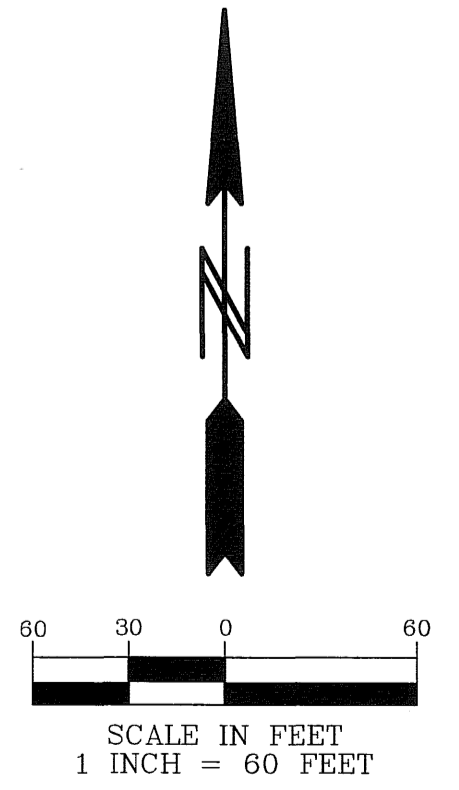
- DENOTES 1/2 INCH BY 14 INCH IRON MONUMENT SET AND MARKED BY LICENSE NO. 19828 WHICH WILL BE SET WITHIN 1 YEAR OF RECORDING THIS PLAT.
- DENOTES FOUND IRON MONUMENT.

BEARINGS ARE BASED ON THE NORTH LINE OF OUTLOT I, WILLOWBROOK, WHICH IS ASSUMED TO HAVE A BEARING OF S88°48'24"E.

DETAIL (NOT TO SCALE)



4992.13.001 Torrens
Office of Registrar of Titles
SEAT OF MINNESOTA
COUNTY OF ANOKA
I hereby certify that the above instrument was filed in my office on August 21, 2009
at 2:03 o'clock P.M.
M. GREEN J. DEVINE, Registrar of Titles
GKE Deputy Registrar of Titles



PIONEER engineering
CIVIL ENGINEERS LAND PLANNERS LAND SURVEYORS LANDSCAPE ARCHITECTS

\$56.00