

WILLOWBROOK 4TH ADDITION

BK 21 OF TORN 5 PG. 25

CITY OF BLAINE
COUNTY OF ANOKA
SEC. 12, TWP. 31, RNG. 23

KNOW ALL PERSONS BY THESE PRESENTS: That Woodside Willowbrook, LLC, a Minnesota limited liability company, owner of the following described property:

Outlot A, WILLOWBROOK 2ND ADDITION, according to the recorded plat thereof, Anoka County, Minnesota.

Has caused the same to be surveyed and platted as WILLOWBROOK 4TH ADDITION and does hereby donate and dedicate to the public for public use forever the public way and the drainage and utility easements as shown on this plat.

In witness whereof said Woodside Willowbrook, LLC, a Minnesota limited liability company, has caused these presents to be signed by its proper officer this 23 day of August, 2010.

WOODSIDE WILLOWBROOK, LLC

Dale R. Wills
Dale R. Wills, as PRESIDENT

STATE OF MINNESOTA
COUNTY OF ANOKA

This instrument was acknowledged before me this 23 day of August, 2010 by Dale R. Wills, as PRESIDENT of Woodside Willowbrook, LLC, a Minnesota limited liability company.

David Patberg
Notary Public, Anoka County, Minnesota
My Commission Expires 1/31/2015

I John C. Larson do hereby certify that this plat was prepared by me or under my direct supervision; that I am a duly Licensed Land Surveyor in the State of Minnesota; that this plat is a correct representation of the boundary survey; that all mathematical data and labels are correctly designated on this plat; that all monuments depicted on this plat have been, or will be correctly set within one year; that all water boundaries and wet lands, as defined in Minnesota Statutes, Section 505.01, Subd. 3, as of the date of this certificate are shown and labeled on this plat; and all public ways are shown and labeled on this plat.

Dated this 8th day of June, 2010.

John C. Larson
John C. Larson, Licensed Land Surveyor
Minnesota License Number 19828

STATE OF MINNESOTA
COUNTY OF Dakota

This instrument was acknowledged before me this 8th day of June, 2010 by John C. Larson.

Nicholas J. Kelsrud
Notary Public, Dakota County, Minnesota
My Commission Expires 1-31-2015

CITY COUNCIL, CITY OF BLAINE, MINNESOTA

This plat of WILLOWBROOK 4TH ADDITION was approved and accepted by the City Council of the City of Blaine, Minnesota, at a regular meeting thereof held this 6th day of May, 2010, and said plat is in compliance with the provisions of Minnesota Statutes, Section 505.03, Subd. 2.

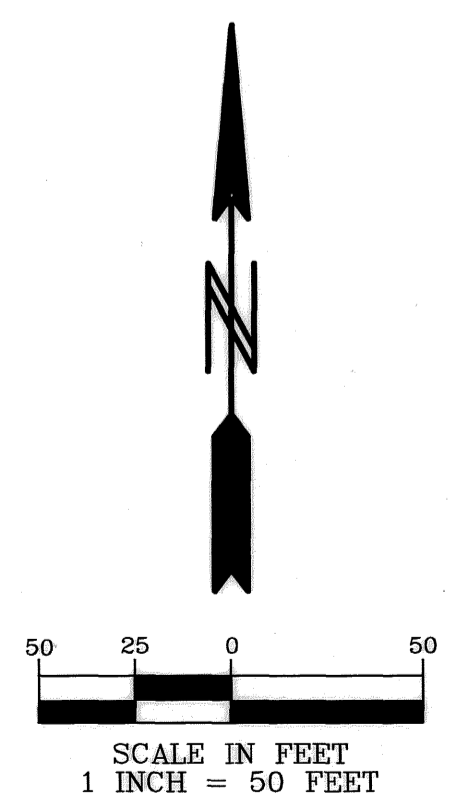
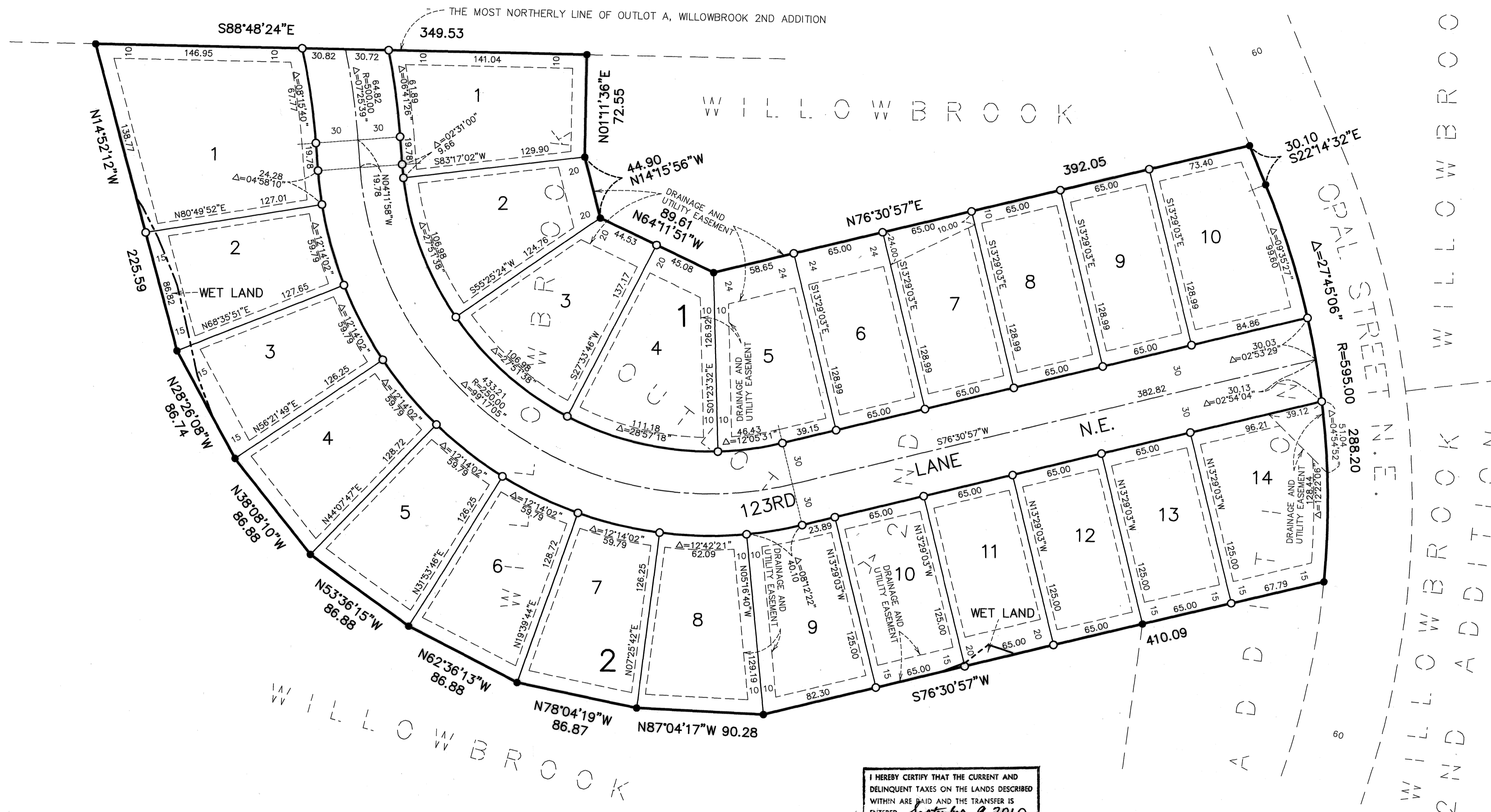
By: Tom Ryan, Mayor

By: Gene M. Cross, Clerk

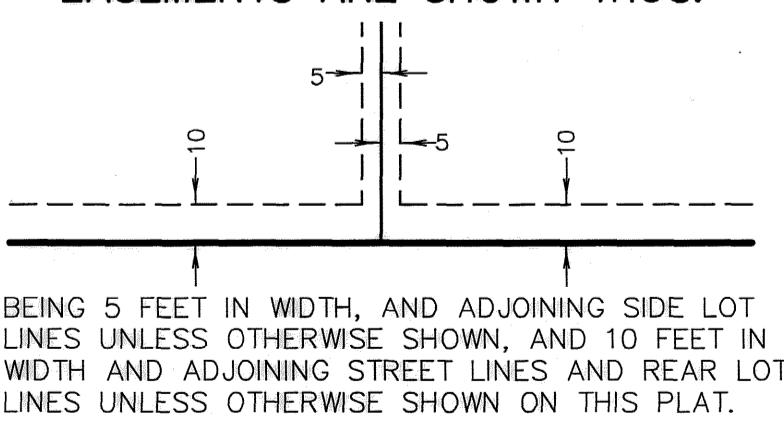
COUNTY SURVEYOR

I hereby certify that in accordance with Minnesota Statutes, Section 505.021, Subd. 11, this plat has been reviewed and approved this 9th day of SEPTEMBER, 2010.

Larry D. Hum
Larry D. Hum, Anoka County Surveyor



DRAINAGE AND UTILITY EASEMENTS ARE SHOWN THUS:



I HEREBY CERTIFY THAT THE CURRENT AND DELINQUENT TAXES ON THE LANDS DESCRIBED WITHIN ARE PAID AND THE TRANSFER IS ENTERED September 9, 2010
Fanny W. Dalen
PROPERTY TAX ADMINISTRATOR
BY: Jill Patterson
DEPUTY PROPERTY TAX ADMINISTRATOR

- DENOTES 1/2 INCH BY 14 INCH IRON MONUMENT SET AND MARKED BY LICENSE NO. 19828 WHICH WILL BE SET WITHIN 1 YEAR OF RECORDING THIS PLAT.
- DENOTES FOUND IRON MONUMENT.

BEARINGS ARE BASED ON THE MOST NORTHERLY LINE OF OUTLOT A, WILLOWBROOK 2ND ADDITION, WHICH IS ASSUMED TO HAVE A BEARING OF S88°48'24\"/>

502506.001

Office of REGISTRAR OF TITLES
STATE OF MINNESOTA
COUNTY OF ANOKA
I hereby certify that the within instrument was filed in this office on September 9, 2010 at 1:56 o'clock P.M.
By: TAP
Deputy Registrar of Titles