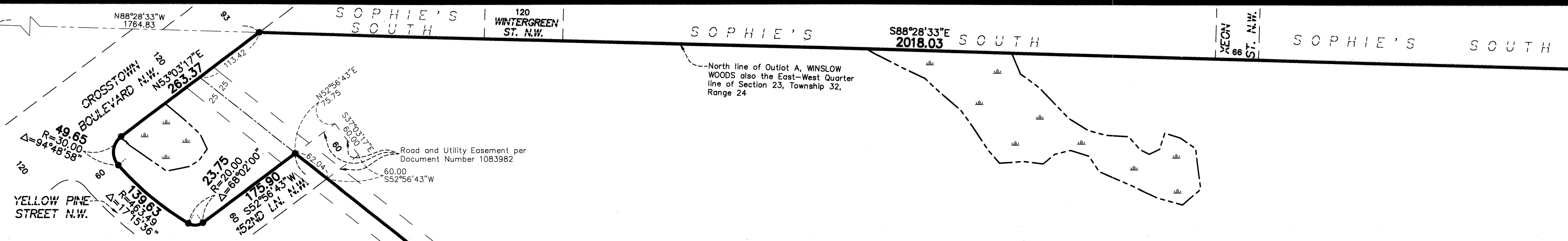


West Quarter Corner of Section 23,
Township 32, Range 24
(Anoka County Cast Iron Monument)

East Quarter Corner of Section 23,
Township 32, Range 24
(Anoka County Cast Iron Monument)



KNOW ALL PERSONS BY THESE PRESENTS: That Tony Emmerich Construction, Inc., a Minnesota corporation, owner of the following described property:
Outlot A, WINSLOW WOODS, according to the recorded plat thereof, Anoka County, Minnesota.
Has caused the same to be surveyed and platted as WINSLOW WOODS 2ND ADDITION and does hereby dedicate to the public for public use the public ways and the drainage and utility easements as shown on this plat.
In witness whereof said Tony Emmerich Construction, Inc., a Minnesota corporation, has caused these presents to be signed by its proper officer this 10th day of July, 2015.

TONY EMMERICH CONSTRUCTION, INC.
Anthony J. Emmerich
Anthony J. Emmerich, President

STATE OF Minnesota
COUNTY OF Anoka
This instrument was acknowledged before me on July 16, 2015 by Anthony J. Emmerich, President of Tony Emmerich Construction, Inc., a Minnesota corporation, on behalf of the corporation.

Patricia B. Erickson
Patricia B. Erickson
Notary Public, Isanti County, MN
My commission expires January 31, 2020

I, Thomas R. Balluff do hereby certify that this plat was prepared by me or under my direct supervision; that I am a duly Licensed Land Surveyor in the State of Minnesota; that this plat is a correct representation of the boundary survey; that all mathematical data and labels are correctly designated on this plat; that all monuments depicted on this plat have been, or will be correctly set within one year; that all water boundaries and wet lands, as defined in Minnesota Statutes, Section 505.01, Subd. 3, as of the date of this certificate are shown and labeled on this plat; and all public ways are shown and labeled on this plat.
Dated this 15th day of JULY, 2015.

Thomas R. Balluff
Thomas R. Balluff, Licensed Land Surveyor
Minnesota License No. 40361

STATE OF Minnesota
COUNTY OF Anoka
This instrument was acknowledged before me on July 15, 2015 by Thomas R. Balluff.

Cynthia J. Morical
Cynthia J. Morical
Notary Public, Hennepin County, MN
My commission expires January 31, 2020

CITY COUNCIL, CITY OF ANDOVER, MINNESOTA
This plat of WINSLOW WOODS 2ND ADDITION was approved and accepted by the City Council of the City of Andover, Minnesota at a regular meeting thereof held this 4th day of JULY, 2015, and said plat is in compliance with the provisions of Minnesota Statutes, Section 505.03, Subd. 2.

CITY COUNCIL, CITY OF ANDOVER, MINNESOTA
By *Julie Orude* Mayor
By *[Signature]* Clerk

COUNTY SURVEYOR
I hereby certify that in accordance with Minnesota Statutes, Section 505.021, Subd. 11, this plat has been reviewed and approved this 23rd day of July, 2015.

By *Larry D. Holm* by *[Signature]*
Larry D. Holm, Anoka County Surveyor

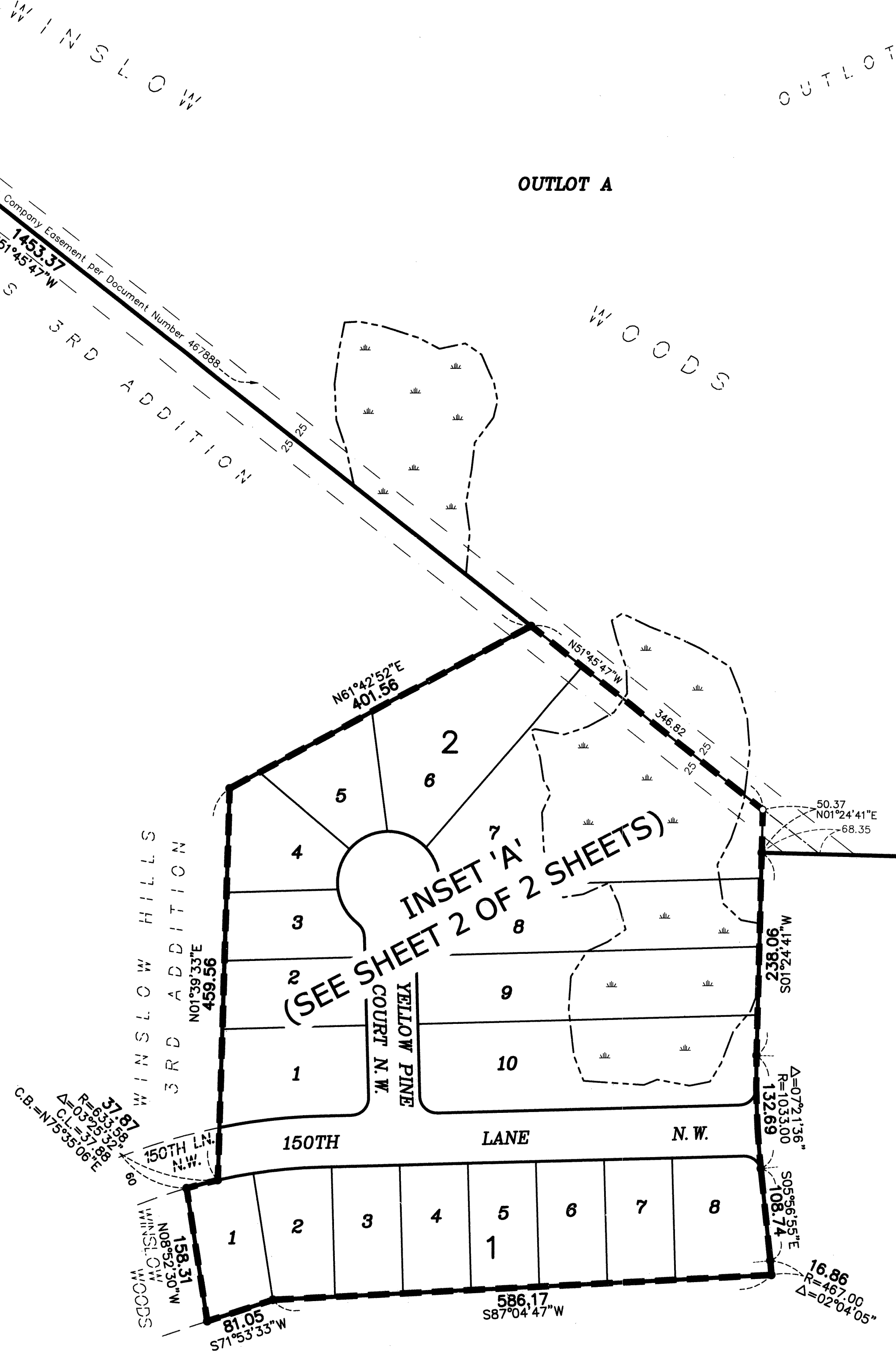
COUNTY AUDITOR/TREASURER
Pursuant to Minnesota Statutes, Section 505.021, Subd. 9, taxes payable in the year 2015 on the land hereinbefore described have been paid. Also, pursuant to Minnesota Statutes, Section 272.12, there are no delinquent taxes and transfer entered this 22nd day of July, 2015.

Jonell Sawyer
Property Tax Administrator
By *Staudie Falk* Deputy

COUNTY RECORDER/REGISTRAR OF TITLES
County of Anoka, State of Minnesota
I hereby certify that this plat of WINSLOW WOODS 2ND ADDITION was filed in the office of the County Recorder/Registrar of Titles for public record on this 23rd day of July, 2015, at 12:27 o'clock P.M. and was duly recorded in Book 78 Page 25, as Document Number 2113847 of Abstract 1012.

Jonell Sawyer
County Recorder/Registrar of Titles
By *Staudie Falk* Deputy

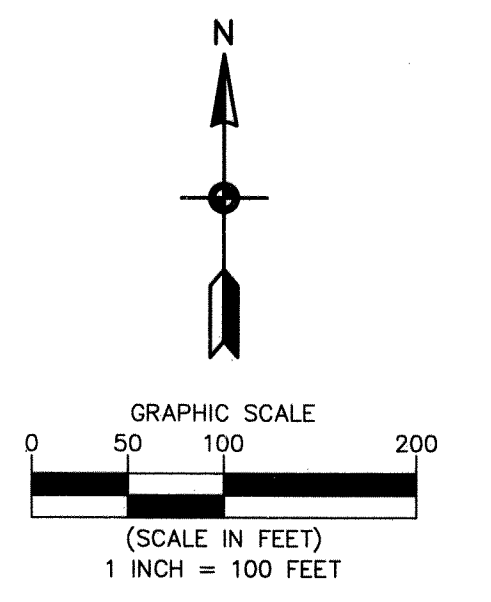
\$56.00



WINSLOW WOODS 2ND ADDITION

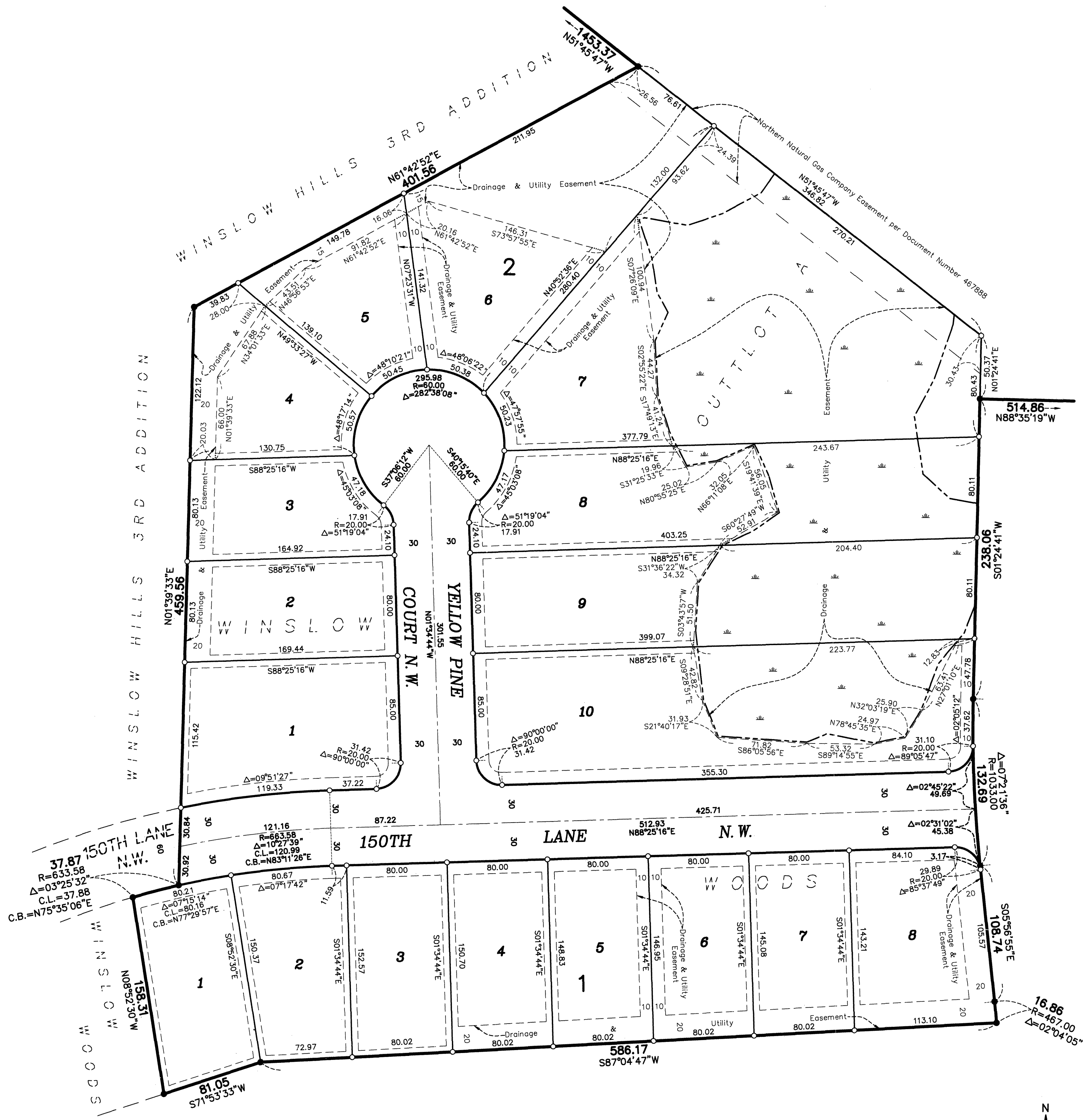
NORTHERN BURLINGTON INC. RAILROAD

- For the purposes of this plat, the north line of Outlot A, WINSLOW WOODS, is assumed to have a bearing of South 88 degrees 28 minutes 33 seconds East.
- Denotes 1/2 inch by 14 inch iron monument set or to be set within one year of recording of this plat and marked with license number 40361
- Denotes found iron Monument unless otherwise noted
- ⊙ Denotes found Anoka County Cast Iron Monument
- ▭ Denotes Wetlands that were delineated by Kjolhaug Environmental Services in 2013.

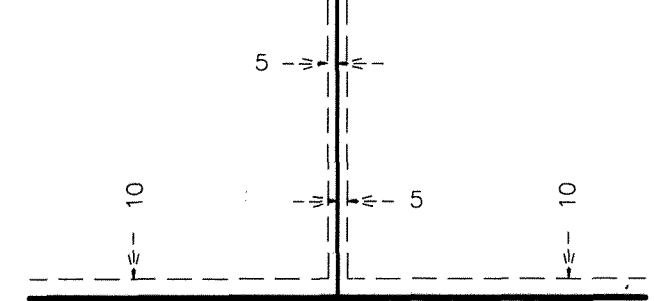


INSET 'A'

WINSLOW WOODS 2ND ADDITION



DRAINAGE AND UTILITY EASEMENTS ARE SHOWN THUS:



being 5 feet in width, and adjoining side & rear lot lines, and 10 feet in width and adjoining right of way lines unless otherwise shown on this plat.

Denotes Wetlands that were delineated by Kjolhaug Environmental Services in 2013.

○ Denotes 1/2 inch by 14 inch iron monument set or to be set within one year of recording of this plat and marked with license number 40361

● Denotes found iron Monument unless otherwise noted

For the purposes of this plat, the north line of Outlot A, WINSLOW WOODS, is assumed to have a bearing of South 88 degrees 28 minutes 33 seconds East.

