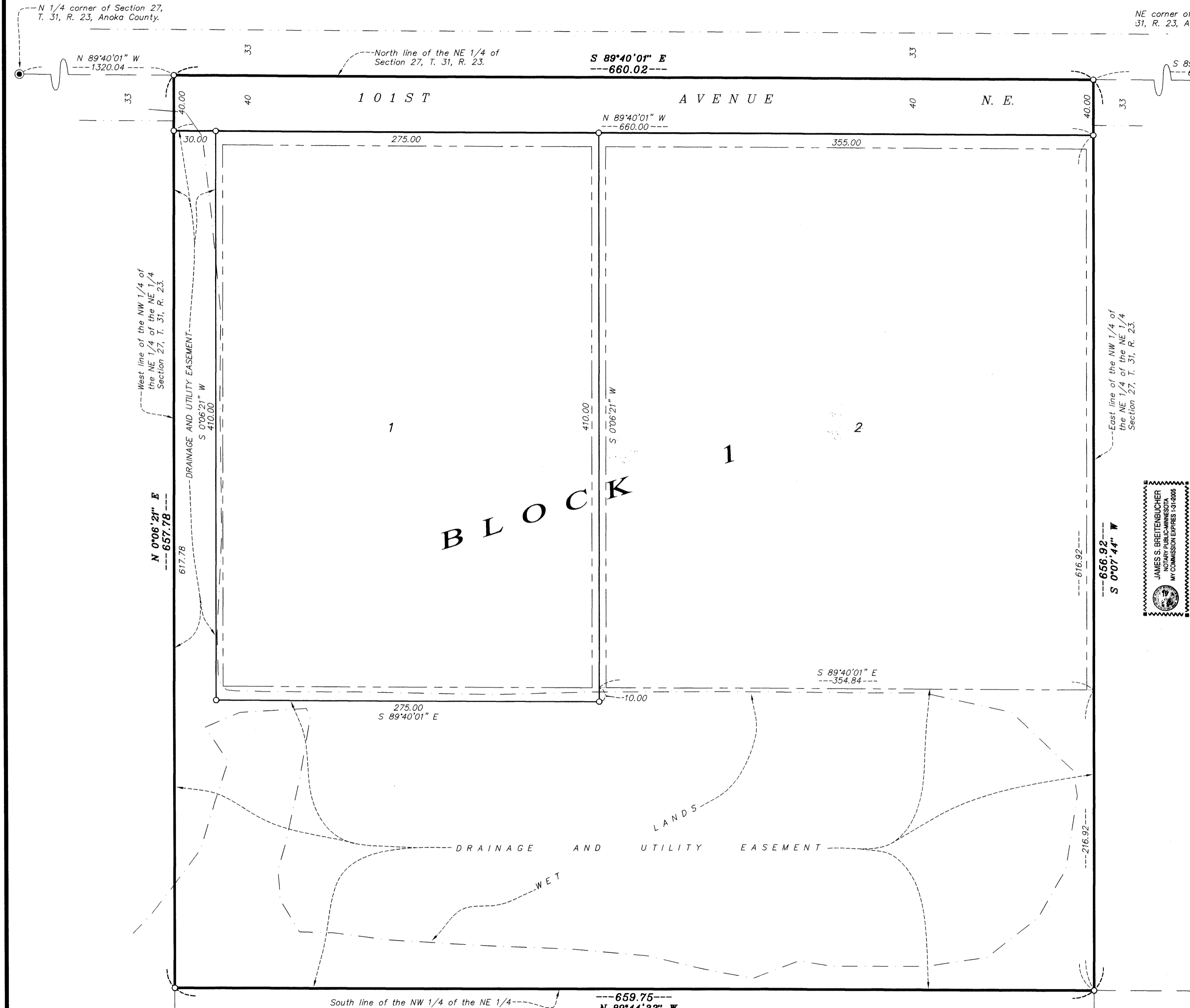


WM-BLAINE FIRST ADDITION

City of Blaine
County of Anoka
Section 27, T. 31, R. 23

bk 59
pg 5



KNOW ALL MEN BY THESE PRESENTS: That Waste Management of Minnesota, Inc., a Minnesota Corporation, fee owner, and John V. Dahl and Caroline T. Dahl, Husband and Wife, Mortgagee, of the following described property situated in the State of Minnesota, County of Anoka, to wit:

The Northwest Quarter of the Northeast Quarter of the Northeast Quarter of Section 27, Township 31, Range 23, Anoka County, Minnesota.

Has caused the same to be surveyed and platted as **WM-BLAINE FIRST ADDITION** and does hereby donate and dedicate to the public for public use forever the avenue, and drainage and utility easements as shown on this plat for drainage and utility purposes.

In witness whereof said Waste Management of Minnesota, Inc., a Minnesota Corporation, has caused these presents to be signed by its proper officer this 30TH day of AUGUST, 2000.

Waste Management of Minnesota, Inc., a Minnesota Corporation

Bruce S. Malec, Jr.
Bruce S. Malec, Jr., Division Manager

State of Minnesota
County of WABASH

The foregoing instrument was acknowledged before me this 30TH day of AUGUST, 2000, by Bruce S. Malec, Jr., as Division Manager of Waste Management of Minnesota, Inc., a Minnesota Corporation, on behalf of the corporation.

RONALD K. NYGAARD
NOTARY PUBLIC - MINNESOTA
My Comm. Exp. Jan. 31, 2005

Ronald K. Nygaard
Notary Public, WABASH County, MINNESOTA
My Commission Expires JANUARY 31, 2005

State of Minnesota
County of RAMSEY

The foregoing instrument was acknowledged before me this 29TH day of AUGUST, 2000, by John V. Dahl and Caroline T. Dahl, Husband and Wife.

*John V. Dahl
Caroline T. Dahl*

James S. Breithner
Notary Public, RAMSEY County, MINNESOTA
My Commission Expires 1-31-05

I hereby certify that I have surveyed and platted the property described on this plat as **WM-BLAINE FIRST ADDITION**; that this plat is a correct representation of the survey; that all distances are correctly shown on the plat in feet and hundredths of a foot; that all monuments will be correctly placed in the ground as shown; that the outside boundary lines are correctly designated on the plat; and that there are no wet lands as defined in MS 505.02, Subd. 1, or public highways to be designated other than as shown.

Robert L. Rohlin
Robert L. Rohlin, Land Surveyor
Minnesota License No. 7439

State of Minnesota
County of URBANA

The foregoing surveyor's certificate was acknowledged before me this 30TH day of AUGUST, 2000, by Robert L. Rohlin, Land Surveyor, Minnesota License No. 7439.

RONALD K. NYGAARD
NOTARY PUBLIC - MINNESOTA
My Comm. Exp. Jan. 31, 2005

Ronald K. Nygaard
Notary Public, URBANA County, MINNESOTA
My Commission Expires JANUARY 31, 2005

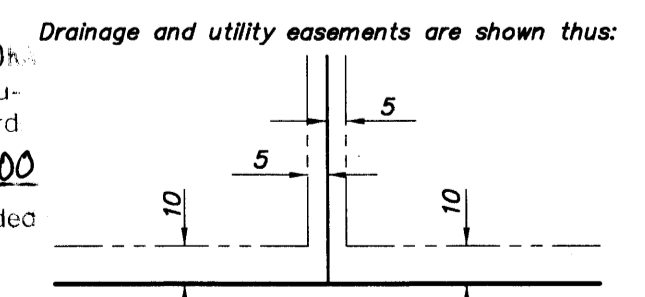
This plat of **WM-BLAINE FIRST ADDITION** was approved and accepted by the City Council of Blaine, Minnesota, at a meeting held this 17TH day of AUGUST, 2000. If applicable, the written comments and recommendations of the Commissioner of Transportation and the County Highway Engineer have been received by the City or the prescribed 30 day period has elapsed without receipt of such comments and recommendations, as provided by Minn. Statutes, Sec. 505.03-Subd. 2.

Tom Ryan Mayor
Joyce Turatal City Clerk

Checked and approved this 30TH day of AUGUST, 2000.

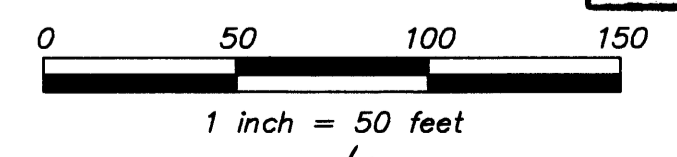
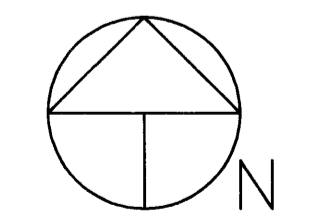
Larry D. Han
Anoka County Surveyor

1520753
OFFICE OF COUNTY RECORDER
STATE OF MINNESOTA, COUNTY OF ANOKA
I hereby certify that the within instrument was filed in this office for record on the 30TH AUGUST A.D., 2000 at 1:15 o'clock P.M., and was duly recorded in book Abt 59 page 6
By Edward M. Jaska
County Recorder
By EIC
Deputy



- DENOTES ANOKA COUNTY MONUMENT
- DENOTES IRON MONUMENT SET R.L.S. 7439
- DENOTES IRON MONUMENT FOUND

FOR THE PURPOSES OF THIS PLAT, THE NORTH LINE OF THE NE 1/4 OF SECTION 27, T. 31, R. 23, ANOKA COUNTY, MINNESOTA, IS ASSUMED TO BEAR S 89°40'01" E.



1 inch = 50 feet
2000068595/\$175.00

I HEREBY CERTIFY THAT THE CHARGE AND DELIVERY TONES ON THE LAND DESCRIBED WITHIN ARE PAID AND THE TRANSFER IS EFFECTIVE
August 30, 2000
LARRY D. HAN
COUNTY SURVEYOR