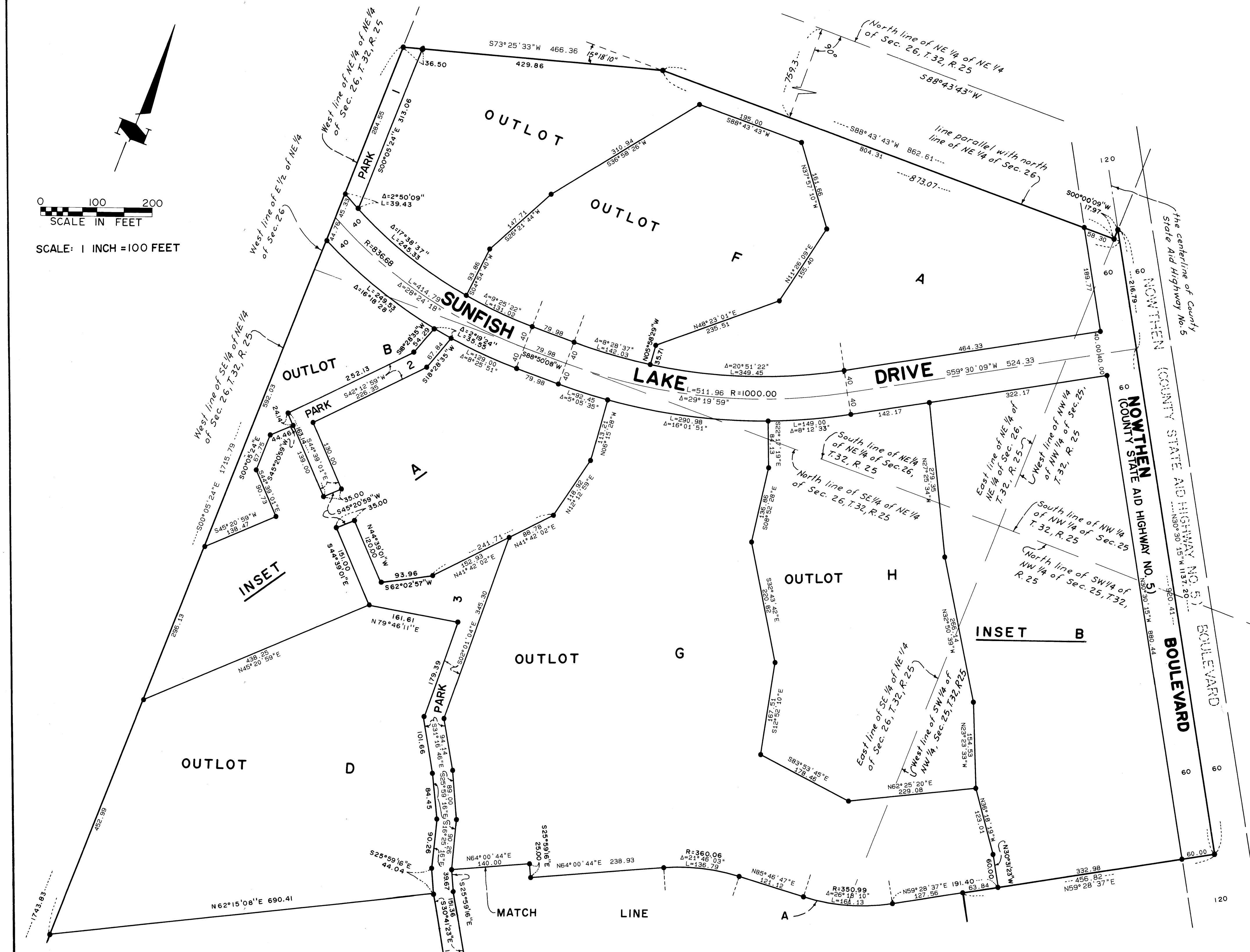
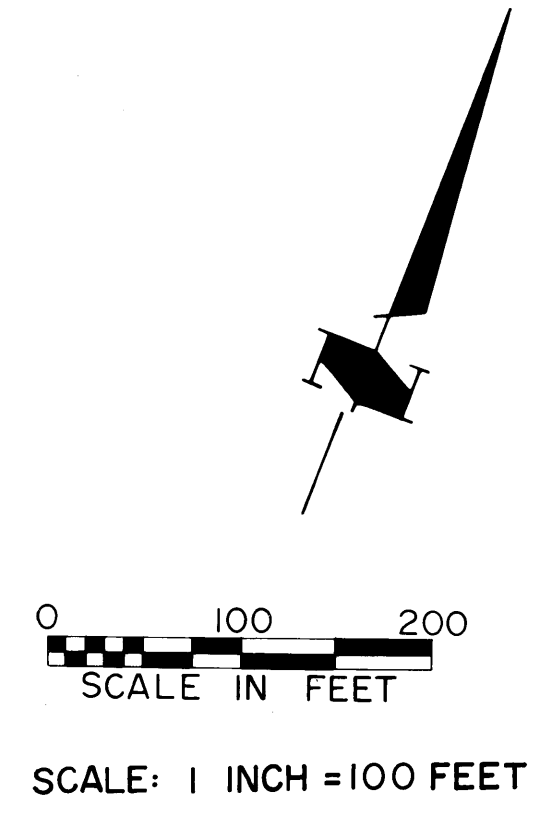


WOOD POND HILLS

CITY OF RAMSEY
ANOKA COUNTY, MINNESOTA



• DENOTES 1/2 INCH BY 14 INCH IRON MONUMENT SET AND MARKED BY REGISTRATION NO. 10938

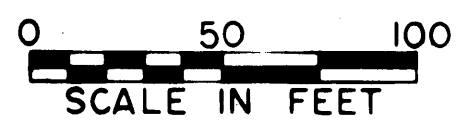
FOR THE PURPOSE OF THIS PLAT THE SOUTH LINE OF THE SE 1/4 OF NE 1/4 OF SEC. 26, T. 32, R. 25 IS ASSUMED TO HAVE A BEARING OF N88°56'26\"/>

McCOMBS FRANK ROOS ASSOCIATES, INC.
ENGINEERS AND SURVEYORS

WOOD POND HILLS

CITY OF RAMSEY
ANOKA COUNTY, MINNESOTA

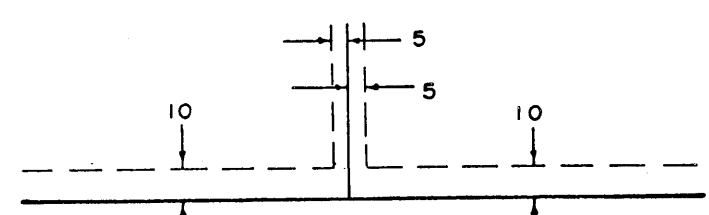
INSET A



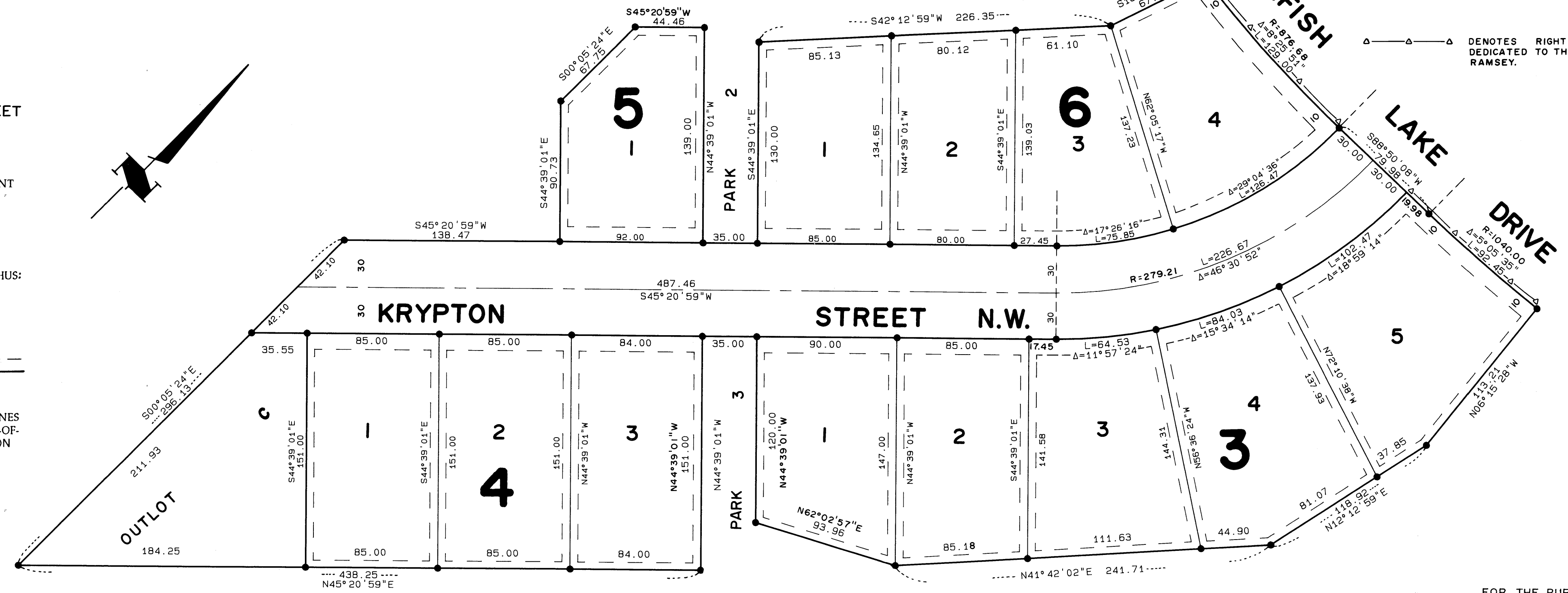
SCALE: 1 INCH = 50 FEET

• DENOTES 1/2 INCH BY 14 INCH IRON MONUMENT SET AND MARKED BY REGISTRATION NO. 10938

UTILITY & DRAINAGE EASEMENTS ARE SHOWN THUS:



BEING 5 FEET IN WIDTH AND ADJOINING LOT LINES AND 10 FEET IN WIDTH AND ADJOINING RIGHT-OF-WAY LINES UNLESS OTHERWISE SHOWN ON THE PLAT.

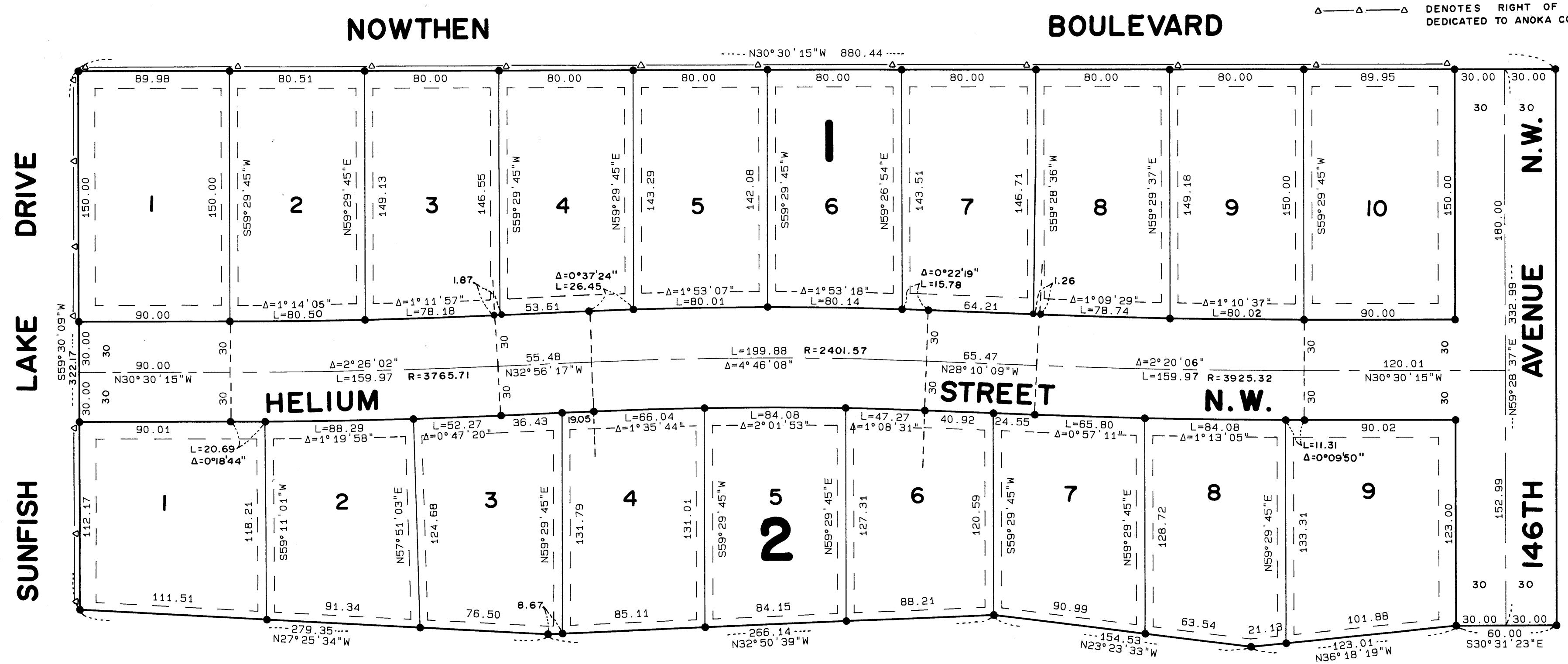


△ DENOTES RIGHT OF ACCESS DEDICATED TO THE CITY OF RAMSEY.

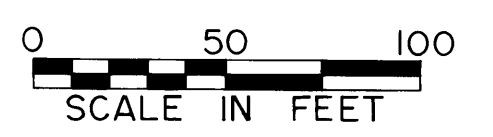
FOR THE PURPOSE OF THIS PLAT THE SOUTH LINE OF THE SE 1/4 OF NE 1/4 OF SEC. 26, T. 32, R. 25 IS ASSUMED TO HAVE A BEARING OF N88°56'26"E.

INSET B

△ DENOTES RIGHT OF ACCESS DEDICATED TO THE CITY OF RAMSEY.



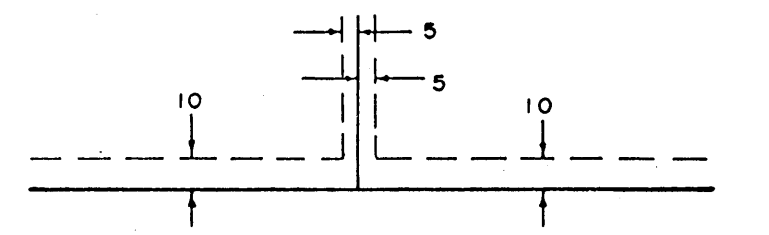
△ DENOTES RIGHT OF ACCESS DEDICATED TO ANOKA COUNTY.



SCALE: 1 INCH = 50 FEET

• DENOTES 1/2 INCH BY 14 INCH IRON MONUMENT SET AND MARKED BY REGISTRATION NO. 10938

UTILITY & DRAINAGE EASEMENTS ARE SHOWN THUS:



BEING 5 FEET IN WIDTH AND ADJOINING LOT LINES AND 10 FEET IN WIDTH AND ADJOINING RIGHT-OF-WAY LINES UNLESS OTHERWISE SHOWN ON THE PLAT.

McCOMBS FRANK ROOS ASSOCIATES, INC.
ENGINEERS AND SURVEYORS