

# WOODED ACRES ESTATES

THIS IS TO CERTIFY that Robert E. Chryst and Betty Lou J. Chryst, husband and wife, fee owners of the following described property situated in Columbus Township, Anoka County, Minnesota:

Northwest quarter of the Northeast quarter and the West half of the Northeast quarter of the Northeast quarter of Section 2, Township 32 North, Range 22 West, Anoka County, Minnesota.

THIS IS TO CERTIFY that Midwest Federal Savings and Loan Association, a Minnesota Banking Corporation, mortgagee of the following described property situated in Columbus Township, Anoka County, Minnesota:

The West half of the East half of the Northwest quarter of the Northeast quarter of Section 2, Township 32 North, Range 22 West, Anoka County, Minnesota.

HEREBY CERTIFY that they have caused the same to be surveyed and platted as WOODED ACRES ESTATES, and do hereby donate and dedicate to the public for public use forever, Rutgers Street and part of 181st Avenue and part of Notre Dame Street Northeast, and utility and drainage easements, as shown on the plat.

IN WITNESS WHEREOF: We have hereunto set our hands and seal this 23 day of January, 19 74.

Signed:

Robert E. Chryst  
Robert E. Chryst

Signed:

Betty Lou J. Chryst  
Betty Lou J. Chryst

STATE OF MINNESOTA }  
COUNTY OF Washington } ss On this 23 day of January, 19 74, before me, a Notary Public within and for said County and State, personally appeared Robert E. Chryst and Betty Lou J. Chryst, husband and wife, to me known to be the persons described herein and who executed the foregoing instrument and acknowledge that they executed the same as their own free act and deed.

Douglas J. Mallett  
Notary Public, Washington County, Minnesota  
My Commission Expires January 6, 1979

IN WITNESS WHEREOF: We have hereunto set our hands and seal this 4th day of FEBRUARY, 19 74.

Signed: Midwest Federal Savings and Loan Association of Minneapolis

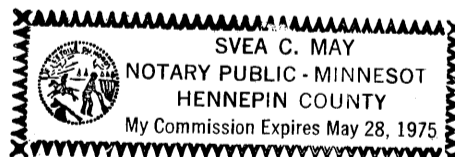
Lloyd K. Peterson  
LLOYD K. PETERSON, VICE PRESIDENT

Signed:

Evelyn A. Larson  
EVELYN A. LARSON, ASSISTANT SECRETARY

STATE OF MINNESOTA }  
COUNTY OF HENNEPIN } ss On this 4th day of FEBRUARY, 19 74, before me, a Notary Public within and for said County and State, personally appeared LLOYD K. PETERSON and EVELYN A. LARSON to me personally known, who being by me, each duly sworn, did say that they are, respectively, the VICE PRESIDENT and ASSISTANT SECRETARY of the Midwest Federal Savings and Loan Association of Minneapolis, the corporation named in the foregoing instrument; that the seal affixed to said instrument is the corporation seal of said corporation; and that said instrument was signed and sealed in behalf of said corporation by authority of its Board of Directors and LLOYD K. PETERSON and EVELYN A. LARSON acknowledge said instrument to be the free act and deed of said corporation.

Svea C. May  
Notary Public, Hennepin County, Minnesota  
My Commission Expires \_\_\_\_\_



I hereby certify that I have surveyed and platted the property described in the dedication of this sheet as WOODED ACRES ESTATES; that this plat is a correct representation of said survey; that all distances are correctly shown on the plat; that all monuments have been correctly placed in the ground as shown; that the outside boundary lines are correctly designated on the plat; and that there are no wet lands, easements, or public highways to be designated on said plat other than as shown thereon.

Don E. Hensen  
Minnesota Registered Land Surveyor  
Registration No. 9260

STATE OF MINNESOTA }  
COUNTY OF Washington } ss The above certificate subscribed and sworn to before me, a Notary Public within and for said County and State, on this 17th day of January, 19 74.

Sharon H. Ait  
Notary Public, Washington County, Minnesota  
My Commission Expires Nov. 14, 1979

This plat was approved and accepted by the Planning Commission of the Township of Columbus, at a meeting held on the 23 day of January, 19 74.

Thomas H. Klassen  
Chairman

This plat was approved and accepted by the Town Board of the Township of Columbus, at a meeting held on the 23 day of January, 19 74.

Urho Larsson  
Board Chairman

Sharon Swanson  
Town Clerk

Checked and approved this 12th day of February, 19 74.

Blond W. Anderson  
Anoka County Surveyor

Recommended for approval this 12th day of Feb, 19 74.

P. J. Strandlin  
Anoka County Highway Engineer

This plat was approved as to form and execution on this 13th day of March, 19 74.

Stephen H. Munshagen  
Anoka County Attorney

This plat was approved and accepted by the Board of County Commissioners of the County of Anoka, State of Minnesota, at a meeting held on the 12th day of February, 19 74.

Albert R. Rosendick  
Chairman

Charles R. Leffler  
County Auditor

"NO DELINQUENT TAXES AND TRANSFER ENTERED"

Mar. 15 1974  
Charles A. Leffler  
Auditor, Anoka County  
Wm. C. Casper  
Deputy

406252

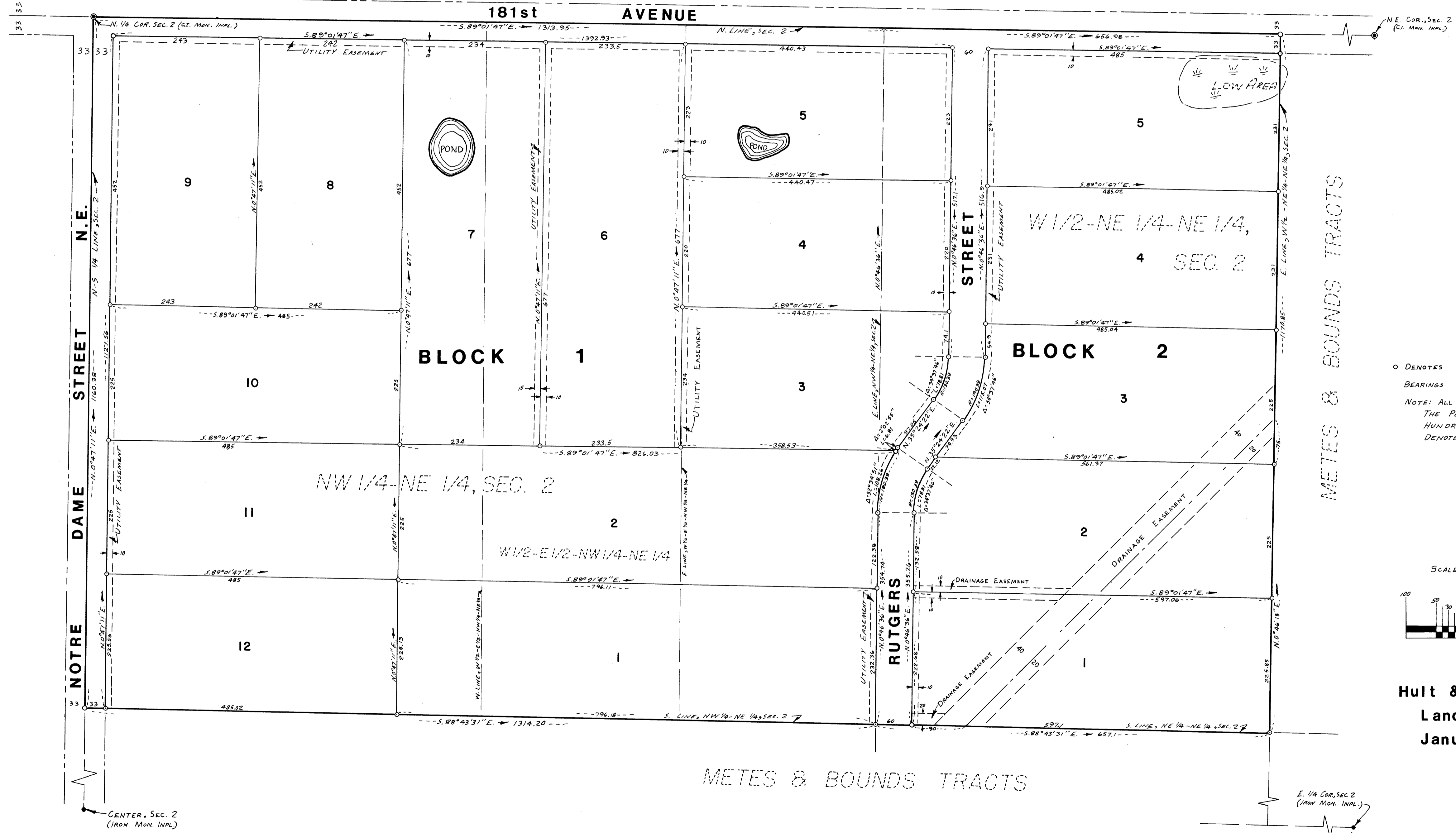
OFFICE OF REGISTER OF DEEDS  
STATE OF MINNESOTA, COUNTY OF ANOKA } ss

I hereby certify that the within instrument was filed in this office for record on the 15th day of MAR, 1974, A.D., 1974, at 9:10 o'clock A.M., and was duly recorded in book 15 of Plats, page 12.

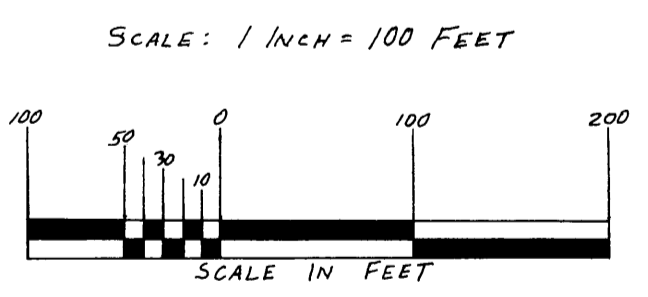
Fred J. Orndahl  
Register of Deeds  
By Margaret Russell  
Deputy

# WOODED ACRES ESTATES

COLUMBUS TOWNSHIP, ANOKA COUNTY, MINNESOTA  
THE NW 1/4-NE 1/4 AND THE W 1/2-NE 1/4-NE 1/4, BOTH IN SECTION 2, T32N, R22W



O DENOTES IRON MONUMENT SET  
 BEARINGS ARE ASSUMED  
 NOTE: ALL DISTANCES AS SHOWN ON THE PLAT ARE ACCURATE TO HUNDREDTHS OF A FOOT (I.E., 100 DENOTES 100.00 FEET).



Hult & Associates, Inc.  
 Land Surveyors  
 January 1974

METES & BOUNDS TRACTS