

WOODLAND COVE

CITY OF BLAINE
 COUNTY OF ANOKA
 SEC. 9, TWP. 31, RGE. 23
 Book 23 Same Page 3

KNOW ALL PERSONS BY THESE PRESENTS: That Woodland Development Corporation, a Minnesota corporation, owner of the following described property:

Tract A, REGISTERED LAND SURVEY NO. 144, according to the recorded plat thereof, Anoka County, Minnesota
 Has caused the same to be surveyed and platted as WOODLAND COVE and does hereby dedicate to the public for public use the drainage and utility easements as created by this plat.

In witness whereof said Woodland Development Corporation, a Minnesota corporation, has caused these presents to be signed by its proper officer this 15th day of APRIL, 2017.

WOODLAND DEVELOPMENT CORPORATION

Byron D. Westlund
 Byron D. Westlund, President

STATE OF MINNESOTA
 COUNTY OF ANOKA

This instrument was acknowledged before me on APRIL 13th, 2017 by Byron D. Westlund, President of Woodland Development Corporation, a Minnesota corporation, on behalf of the corporation.

Debra J. Marohn
 DEBRA J. MAROHN
 Notary Public, ANOKA COUNTY, MINNESOTA
 My commission expires JANUARY 31, 2020

I, Thomas R. Balluff do hereby certify that this plat was prepared by me or under my direct supervision; that I am a duly Licensed Land Surveyor in the State of Minnesota; that this plat is a correct representation of the boundary survey; that all mathematical data and labels are correctly designated on this plat; that all monuments depicted on this plat have been, or will be correctly set within one year; that all water boundaries and wet lands, as defined in Minnesota Statutes, Section 505.01, Subd. 3, as of the date of this certificate are shown and labeled on this plat; and all public ways are shown and labeled on this plat.

Dated this 12th day of APRIL, 2017.

Thomas R. Balluff
 Thomas R. Balluff, Licensed Land Surveyor
 Minnesota License No. 40361

STATE OF Minnesota
 COUNTY OF Anoka

This instrument was acknowledged before me on April 12th, 2017 by Thomas R. Balluff.

Cynthia J. Morical
 Cynthia J. Morical
 Notary Public, Hennepin County, Minnesota
 My commission expires January 31, 2020

CITY COUNCIL, CITY OF BLAINE, MINNESOTA

This plat of WOODLAND COVE was approved and accepted by the City Council of the City of Blaine, Minnesota at a regular meeting thereof held this 4th day of April, 2017 and said plat is in compliance with the provisions of Minnesota Statutes, Section 505.03, Subd. 2.

CITY COUNCIL, CITY OF BLAINE, MINNESOTA

By: Tom Jensen Mayor By: Colleen Jensen Clerk

COUNTY SURVEYOR

I hereby certify that in accordance with Minnesota Statutes, Section 505.021, Subd. 11, this plat has been reviewed and approved this 18th day of APRIL, 2017.

Larry D. Hillum
 Larry D. Hillum, Anoka County Surveyor

COUNTY AUDITOR/TREASURER

Pursuant to Minnesota Statutes, Section 505.021, Subd. 9, taxes payable in the year 2017 on the land hereinbefore described have been paid. Also, pursuant to Minnesota Statutes, Section 272.12, there are no delinquent taxes and transfer entered this 18th day of April, 2017.

Donnell M. Sawyer
 Donnell M. Sawyer
 Property Tax Administrator
 By: Jeff Peterson Deputy

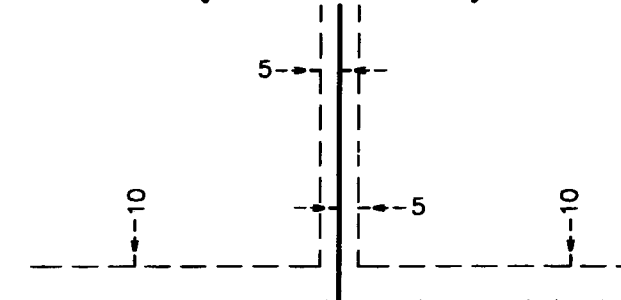
COUNTY RECORDER/REGISTRAR OF TITLES

County of Anoka, State of Minnesota

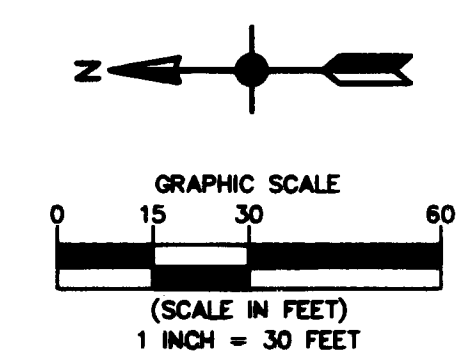
I hereby certify that this plat of WOODLAND COVE was filed in the office of the County Recorder/Registrar of Titles for public record on this 19th day of April, 2017 at 12:45 o'clock P.M. and was duly recorded in Book 23 Page 3 as Document Number 547666-001

Donnell M. Sawyer
 Donnell M. Sawyer
 County Recorder/Registrar of Titles
 By: Jeff Peterson Deputy

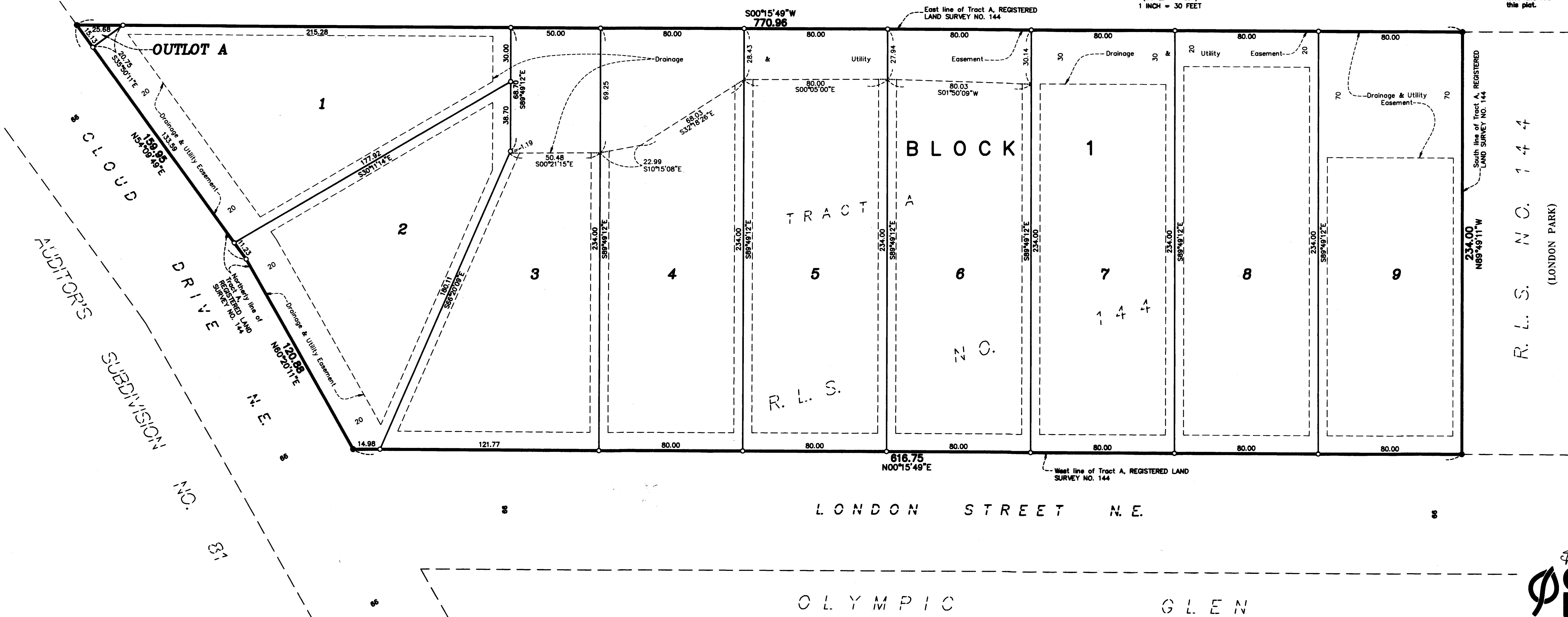
DRAINAGE AND UTILITY EASEMENTS ARE SHOWN THUS: (NOT TO SCALE)



Denotes 5/8 inch by 14 inch Rebar, set or to be set within one year of recording of this plat and marked with license number 40361
 Denotes Found Iron Monument unless otherwise noted
 For the purposes of this plat, the East line of Tract A, REGISTERED LAND SURVEY NO. 144, Anoka County, Minnesota, is assumed to bear S00°15'49"W



KAHMSIN'S ACRES



R. L. S. N. O. 144
 (LONDON PARK)