

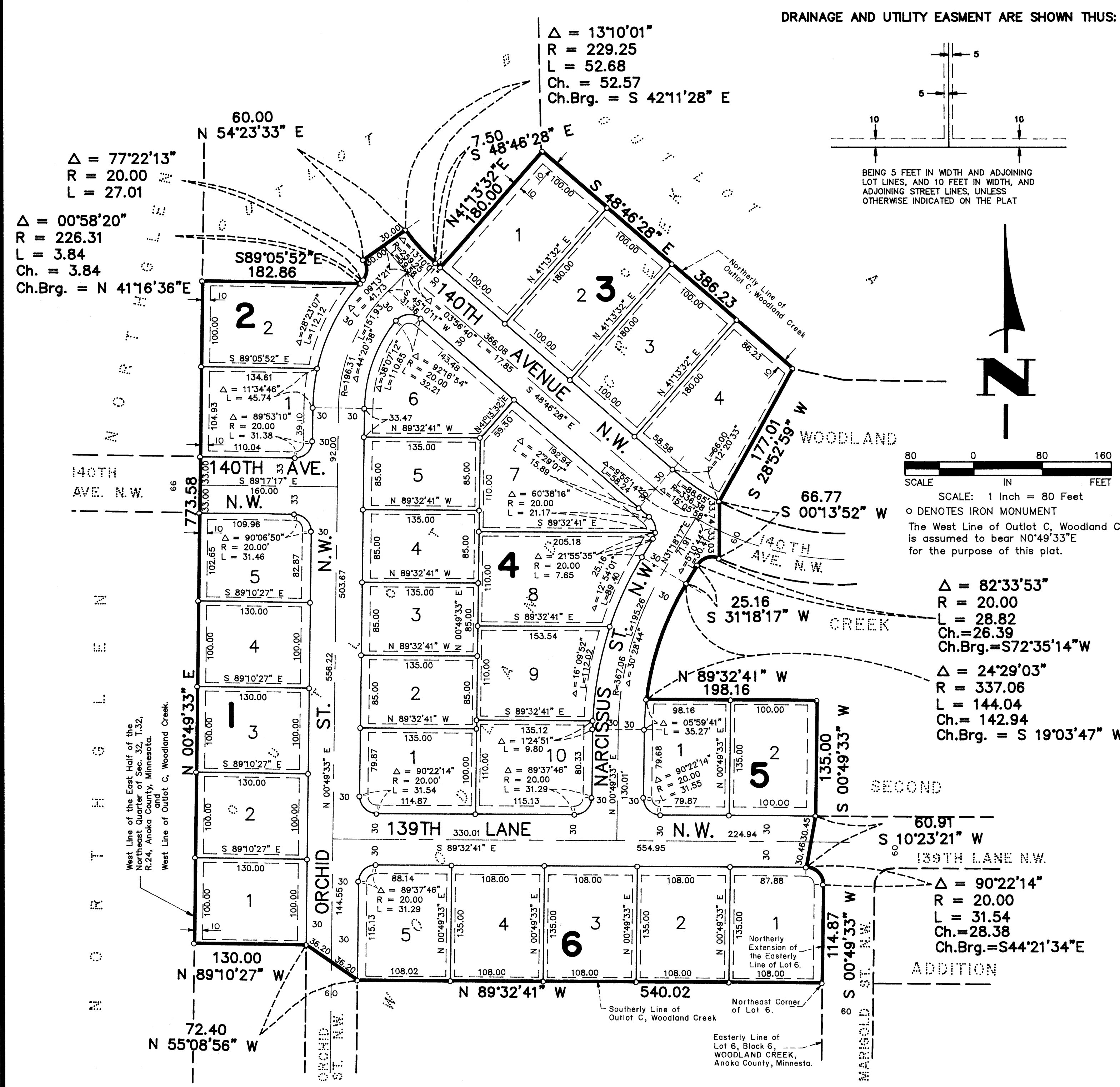
WOODLAND CREEK FOURTH ADDITION

City of Andover

County of Anoka

256083

Office
 Date
 at 4 P
 By *Lawrence B. Carlson*



KNOW ALL PERSONS BY THESE PRESENTS: That Woodland Development Corporation, a Minnesota Corporation, owner and proprietor of the following described property situated in the County of Anoka, State of Minnesota, to wit:

That part of Outlot C, WOODLAND CREEK, lying Westerly and Northwesterly of the plat of Woodland Creek Second Addition.

Has caused the same to be surveyed and platted as WOODLAND CREEK FOURTH ADDITION and does hereby donate and dedicate to the public for public use forever the Avenues, Lane and Streets as shown on this plat. Also dedicating the drainage and/or utility easements as shown on this plat.

In witness whereof said Woodland Development Corporation, a Minnesota Corporation, has caused these presents to be signed by its proper officer this 13th day of June, 1994.

WOODLAND DEVELOPMENT CORPORATION

Lawrence B. Carlson
 Lawrence B. Carlson, President

STATE OF MINNESOTA
 COUNTY OF ANOKA
 The foregoing instrument was acknowledged before me this 13th day of June, 1994, by Lawrence B. Carlson, as President of Woodland Development Corporation, a Minnesota Corporation, on behalf of the corporation.

Pamela S. Westlund
 Notary Public
 My Commission expires April 28, 1998

I hereby certify that I have surveyed and platted the property described on this plat as WOODLAND CREEK FOURTH ADDITION; that this plat is a correct representation of said survey; that all distances are correctly shown on said plat in feet and hundredths of a foot; that all monuments have been correctly placed in the ground as shown on said plat; and that there are no wetlands to be designated on said plat;

Charles R. Christopherson
 Charles R. Christopherson, Land Surveyor
 Minn. Lic. No. 18420

STATE OF MINNESOTA
 COUNTY OF ANOKA
 The foregoing instrument was acknowledged before me this 9th day of June, 1994, by Charles R. Christopherson, Land Surveyor.

Larry K. Affeld
 Notary Public
 My Commission expires December 20, 1996

ANDOVER, MINNESOTA
 This plat of WOODLAND CREEK FOURTH ADDITION was approved and accepted by the City Council of Andover, Minnesota, at a regular meeting thereof held this 12th day of May, 1994. If applicable, the written comments and recommendations of the Commissioner of Transportation and the County Highway Engineer have been received by the city or the prescribed 30 day period has elapsed without receipt of such comments and recommendations, as provided by Minn. Statutes Section 505.03, Subd. 2.

CITY COUNCIL OF THE CITY OF ANDOVER, MINNESOTA

J. E. McKelvey, Mayor
Dustin Solt, Clerk
 ANOKA COUNTY SURVEYOR

This plat was checked and approved on this 17th day of June, 1994.

Marilyn D. Anderson
 Marilyn D. Anderson, Anoka County Surveyor

HEREBY CERTIFY THAT THE CURRENT AND DELINQUENT TAXES ON THE LANDS DESCRIBED WITHIN ARE PAID AND THE TRANSFER IS ENTERED
 JUNE 17 1994
 EDWARD M. TRESKA
 DEPUTY PROPERTY TAX ADMINISTRATOR

CITY OF ANDOVER
 INCORPORATED 1874
 MINNESOTA