

# WOODLAND CREEK THIRD ADDITION

City of Andover  
County of Anoka

KNOW ALL PERSONS BY THESE PRESENTS: That Woodland Development Corporation, a Minnesota Corporation, owner and proprietor of the following described property situated in the County of Anoka, State of Minnesota, to wit:

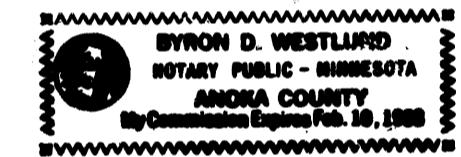
Outlot D, Woodland Creek.

Has caused the same to be surveyed and platted as WOODLAND CREEK THIRD ADDITION and does hereby donate and dedicate to the public for public use forever the Avenue and Streets as shown on this plat. Also dedicating the drainage and/or utility easements as shown on this plat.

In witness whereof said Woodland Development Corporation, a Minnesota Corporation, has caused these presents to be signed by its proper officer this 15<sup>th</sup> day of December, 1992.

WOODLAND DEVELOPMENT CORPORATION  
*Lawrence B. Carlson*  
Lawrence B. Carlson, President

STATE OF MINNESOTA  
COUNTY OF Anoka  
The foregoing instrument was acknowledged before me this 15<sup>th</sup> day of December, 1992 by Lawrence B. Carlson, as President of Woodland Development Corporation, a Minnesota Corporation, on behalf of the corporation.

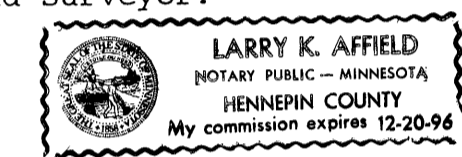


*Byron D. Westlund*  
Notary Public Anoka County, Minnesota  
My Commission expires Feb 10<sup>th</sup>, 1993

I hereby certify that I have surveyed and platted the property described on this plat as WOODLAND CREEK THIRD ADDITION; that this plat is a correct representation of said survey; that all distances are correctly shown on said plat in feet and hundredths of a foot; that all monuments have been correctly placed in the ground as shown on said plat or will be placed as required by the local governmental unit as designated on said plat; and that there are no wetlands to be designated on said plat;

*James M. Winter*  
James M. Winter, Land Surveyor  
Minn. Lic. No. 12263

STATE OF MINNESOTA  
COUNTY OF Anoka  
The foregoing instrument was acknowledged before me this 25<sup>th</sup> day of November, 1992 by James M. Winter, Land Surveyor.



*Larry K. Affield*  
Notary Public Hennepin County, Minnesota  
My Commission expires December 20, 1996

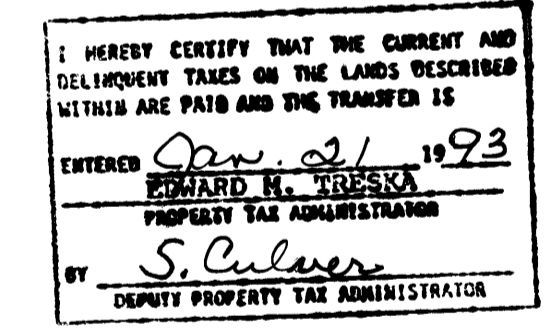
ANDOVER, MINNESOTA  
This plat of WOODLAND CREEK THIRD ADDITION was approved and accepted by the City Council of Andover, Minnesota, at a regular meeting thereof held this 11<sup>th</sup> day of November, 1992. If applicable, the written comments and recommendations of the Commissioner of Transportation and the County Highway Engineer have been received by the city or the prescribed 30 day period has elapsed without receipt of such comments and recommendations, as provided by Minn. Statutes Section 505.03, Subd. 2.

CITY COUNCIL OF THE CITY OF ANDOVER, MINNESOTA

*J. E. McKelvey*, Mayor  
*Sietain Volk*, Clerk  
ANOKA COUNTY SURVEYOR

This plat was checked and approved on this 21<sup>st</sup> day of Jan, 1993.

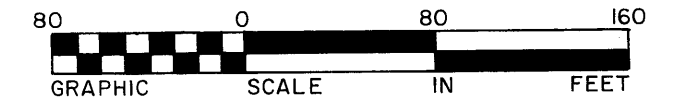
*Merlyn D. Anderson*  
Merlyn D. Anderson, Anoka County Surveyor



229593  
Office of REGISTRAR OF TITLES  
STATE OF MINNESOTA  
COUNTY OF ANOKA  
I hereby certify that the within instrument was filed in this office on the 21<sup>st</sup> day of Jan, 1993 at 10:48 a.m.  
*Merlyn D. Anderson* Registrar of Titles  
By *Richard Beck* Deputy Registrar of Titles

# WOODLAND CREEK THIRD ADDITION

City of Andover County of Anoka

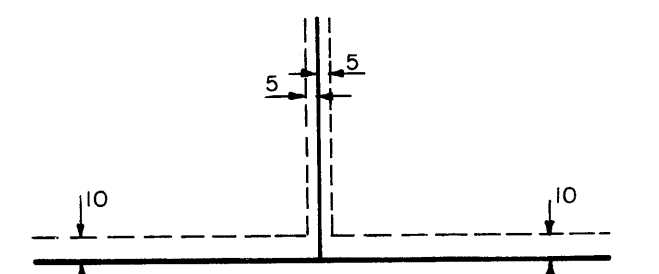


Scale: 1 Inch = 80 Feet

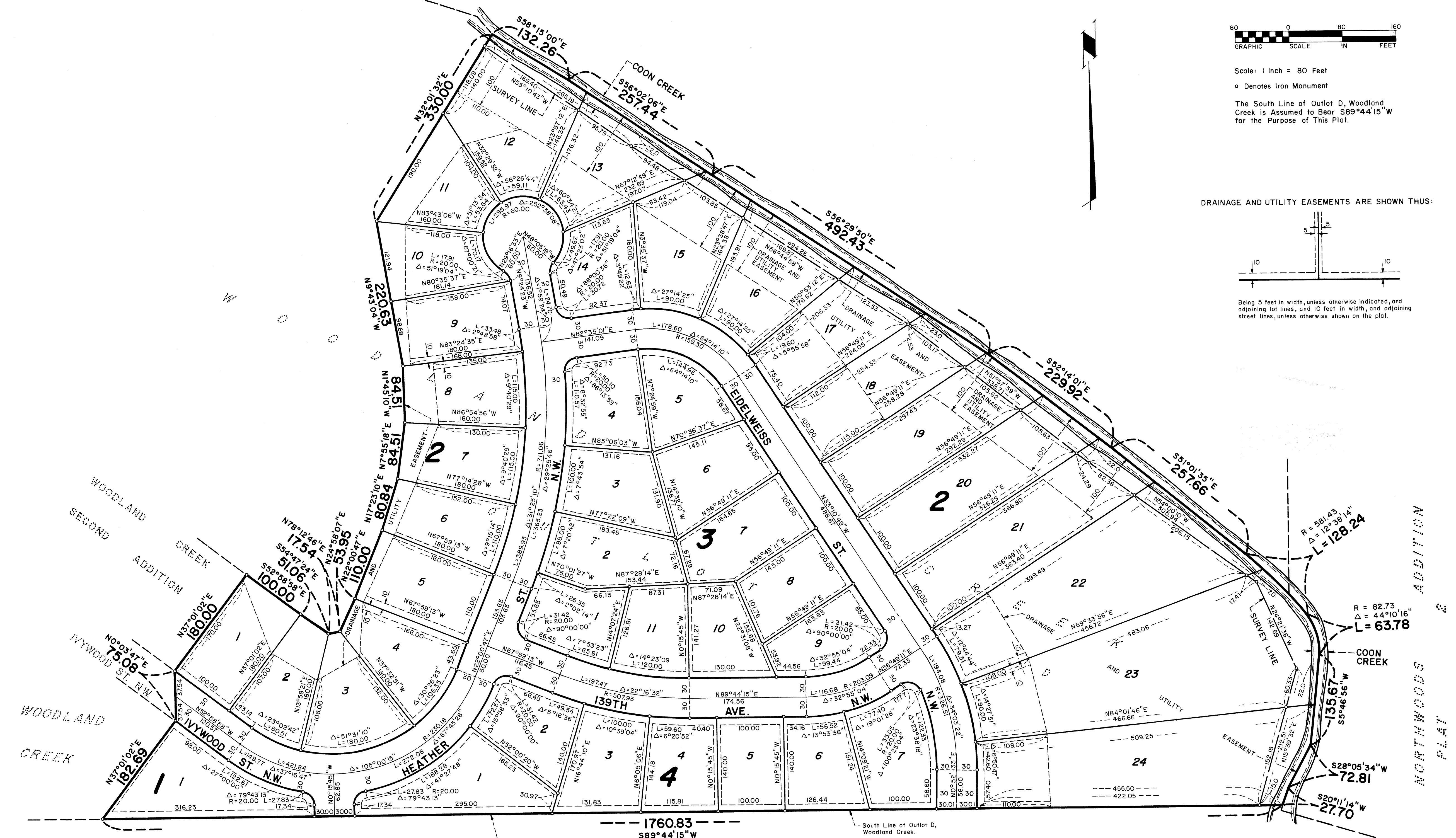
o Denotes Iron Monument

The South Line of Outlot D, Woodland Creek is Assumed to Bear S89°44'15"W for the Purpose of This Plat.

DRAINAGE AND UTILITY EASEMENTS ARE SHOWN THUS:



Being 5 feet in width, unless otherwise indicated, and adjoining lot lines, and 10 feet in width, and adjoining street lines, unless otherwise shown on the plat.



North Line of the South 1089.00 Feet of the Northwest Quarter of Sec. 33, T. 32, R. 24, Anoka County, Minnesota.

South Line of Outlot D, Woodland Creek.