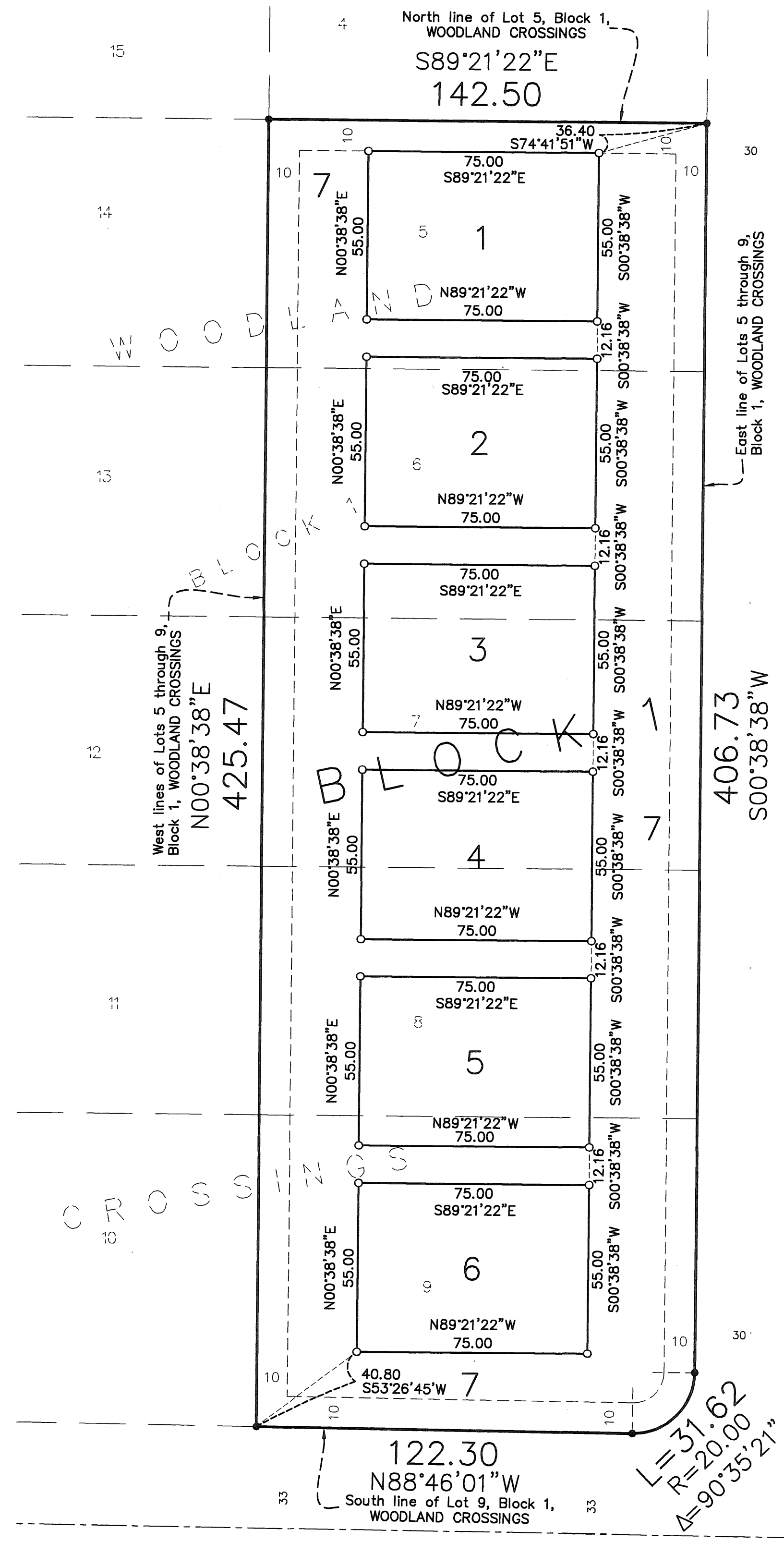


WOODLAND CROSSINGS SECOND ADDITION

BK 75 Abst Pg 29

CITY OF ANDOVER
COUNTY OF ANOKA
Sec. 15, T. 32, R. 24



WOODLAND CROSSINGS

SHAW'S GLEN CROSSINGS

KNOW ALL PERSONS BY THESE PRESENTS: That Woodland Development Corporation, a Minnesota Corporation, owner of the following described property:

Lots 5, 6, 7, 8 and 9, Block 1, WOODLAND CROSSINGS, Anoka County, Minnesota.

Has caused the same to be surveyed and platted as WOODLAND CROSSINGS SECOND ADDITION and does hereby dedicate to the public for public use the drainage and utility easements as shown on this plat.

In witness whereof said Woodland Development Corporation, a Minnesota Corporation, has caused these presents to be signed by its proper officers this 1st day of July, 2010.

WOODLAND DEVELOPMENT CORPORATION

Byron D. Westlund
Byron D. Westlund, as President

STATE OF MINNESOTA
COUNTY OF ANOKA

This instrument was acknowledged before me this 1st day of July, 2010, by Byron D. Westlund, as President of Woodland Development Corporation, a Minnesota Corporation, on behalf of the corporation.



DEBRA J MAROHN
Debra J. Marohn
Notary Public, Minnesota
My commission expires 1-15-2015

I Charles R. Christopherson do hereby certify that this plat was prepared by me or under my direct supervision; that I am duly Licensed Land Surveyor in the State of Minnesota; that this plat is a correct representation of the boundary survey, that all mathematical data and labels are correctly designated on this plat; that all monuments depicted on this plat have been, or will be correctly set within one year; that all water boundaries and wet lands, as defined in Minnesota Statutes, Section 505.01, Subd. 3, as of the date of this certificate are shown and labeled on this plat; and all public ways are shown and labeled on this plat.

Dated this 10th day of June, 2010.

Charles R. Christopherson
Charles R. Christopherson, Licensed Land Surveyor
Minnesota License No. 18420

STATE OF MINNESOTA
COUNTY OF ANOKA

This instrument was acknowledged before me this 10th day of June, 2010, by Charles R. Christopherson.

Jeffrey M. Busse
Jeffrey M. Busse
Notary Public, Minnesota
My commission expires January 31, 2013

City Council, City of Andover, Minnesota

This plat of WOODLAND CROSSINGS SECOND ADDITION was approved and accepted by the City Council of the City of Andover, Minnesota at a regular meeting thereof held this 1st day of July, 2010, and said plat is in compliance with the provisions of Minnesota Statutes, Section 505.03, Subd. 2.

City Council, City of Andover, Minnesota

By: Mark R. Sankle, Mayor

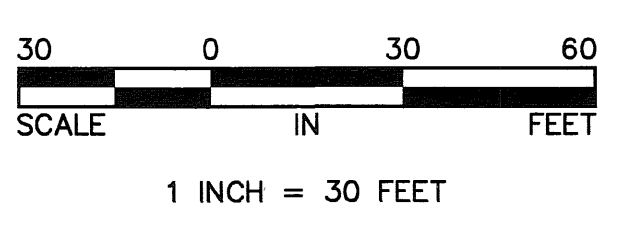
By: Melissa Hartman, Clerk

ANOKA COUNTY SURVEYOR

I hereby certify that in accordance with Minnesota Statutes, Section 505.021, Sub. 11, this plat has been reviewed and approved this 26th day of July, 2010.

Larry D. Hoium by James A. Bean
Larry D. Hoium,
Anoka County Surveyor

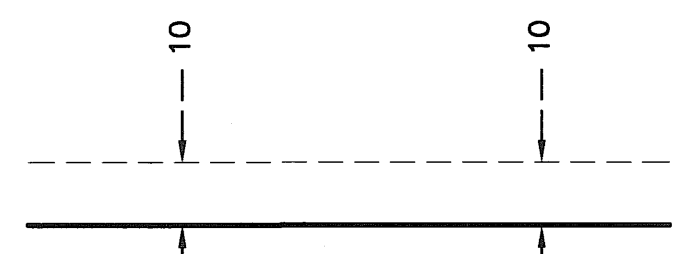
2016474.001
OFFICE OF COUNTY RECORDER
STATE OF MINNESOTA, COUNTY OF ANOKA
I hereby certify that the within instrument was filed in this office for record on the 26th day of July, A.D., 2010 at 9:16 o'clock A.M., and was duly recorded in book 75, page 29.
Larry W. Dalien
County Recorder
By MEU



- Denotes 1/2 inch by 14 inch iron monument set and marked with Minnesota License No. 18420.
- Denotes found iron monument

For the purposes of this plat the east line of the Lots 5 through 9, Block 1, WOODLAND CROSSINGS is assumed to bear S00°38'38"W.

DRAINAGE AND UTILITY EASEMENTS ARE SHOWN THUS:



Being 10.00 feet in width and adjoining plat boundary line unless otherwise shown on this plat

I HEREBY CERTIFY THAT THE CURRENT AND DELINQUENT TAXES ON THE LANDS DESCRIBED WITHIN ARE PAID AND THE TRANSFER IS 7-26-10.
ENTERED Larry W. Dalien
Larry W. Dalien
PROPERTY TAX ADMINISTRATOR
BY Ms. Windham
DEPUTY PROPERTY TAX ADMINISTRATOR

\$56.00

