

# WOODLAND VILLAGE 2ND ADDITION

CITY OF BLAINE  
COUNTY OF ANOKA  
Sec. 12, Twp. 31, Rge. 23  
Book 21, TORNIS Pg 38

KNOW ALL PERSONS BY THESE PRESENTS: That Village Bank, a Minnesota corporation, owner, and Woodland Development Corporation, a Minnesota corporation, contract purchaser, of the following described property:

Lots 9, 10, 11, and 12 Block 3, and Outlot J, GARDENWOOD, Anoka County, Minnesota,  
and  
Lot 1, Block 2, GARDENWOOD SECOND ADDITION, Anoka County, Minnesota.

Have caused the same to be surveyed and platted as WOODLAND VILLAGE 2ND ADDITION and do hereby dedicate to the public for public use the drainage and utility easements as shown on this plat.

In witness whereof said Village Bank, a Minnesota corporation, has caused these presents to be signed by its proper officer this 21<sup>st</sup> day of July, 2012.

VILLAGE BANK  
*Thomas R. Schaffhausen*  
Thomas R. Schaffhausen, Chief Credit Officer

STATE OF MINNESOTA  
COUNTY OF Anoka

This instrument was acknowledged before me on 7-26-12 by Thomas R. Schaffhausen, Chief Credit Officer of Village Bank, a Minnesota corporation, on behalf of the corporation.

*Berry Olson*  
Notary Public, Anoka County, MN  
My commission expires 1-31-15

In witness whereof, said Woodland Development Corporation, a Minnesota corporation, has caused these presents to be signed by its proper officer this 21<sup>st</sup> day of July, 2012.

WOODLAND DEVELOPMENT CORPORATION  
*Byron D. Westlund*  
Byron D. Westlund, President

STATE OF MINNESOTA  
COUNTY OF Anoka

This instrument was acknowledged before me on July 24, 2012 by Byron D. Westlund, President of Woodland Development Corporation, a Minnesota corporation, on behalf of the corporation.

*Shawn R. Balluff*  
Notary Public, Anoka County, MN  
My commission expires 1-31-14

I, Thomas R. Balluff do hereby certify that this plat was prepared by me or under my direct supervision; that I am a duly Licensed Land Surveyor in the State of Minnesota; that this plat is a correct representation of the boundary survey; that all mathematical data and labels are correctly designated on this plat; that all monuments depicted on this plat have been, or will be correctly set within one year; that all water boundaries and wet lands, as defined in Minnesota Statutes, Section 505.01, Subd. 3, as of the date of this certificate are shown and labeled on this plat; and all public ways are shown and labeled on this plat.

Dated this 12<sup>th</sup> day of JULY, 2012.

*Thomas R. Balluff*  
Thomas R. Balluff, Licensed Land Surveyor  
Minnesota License No. 40361

STATE OF MINNESOTA  
COUNTY OF Anoka

This instrument was acknowledged before me on July 12, 2012 by Thomas R. Balluff.

*Kelly H. Street*  
Notary Public, Anoka County, MN  
My commission expires 1-31-2014

CITY COUNCIL, CITY OF BLAINE, MINNESOTA

This plat of WOODLAND VILLAGE 2ND ADDITION was approved and accepted by the City Council of the City of Blaine, Minnesota at a regular meeting thereof held this 7<sup>th</sup> day of June, 2012, and said plat is in compliance with the provisions of Minnesota Statutes, Section 505.03, Subd. 2.

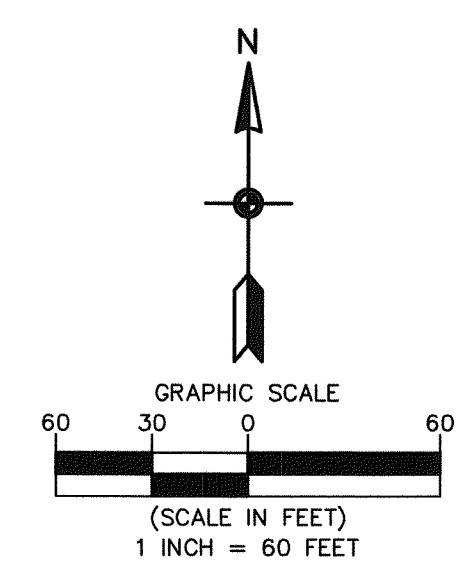
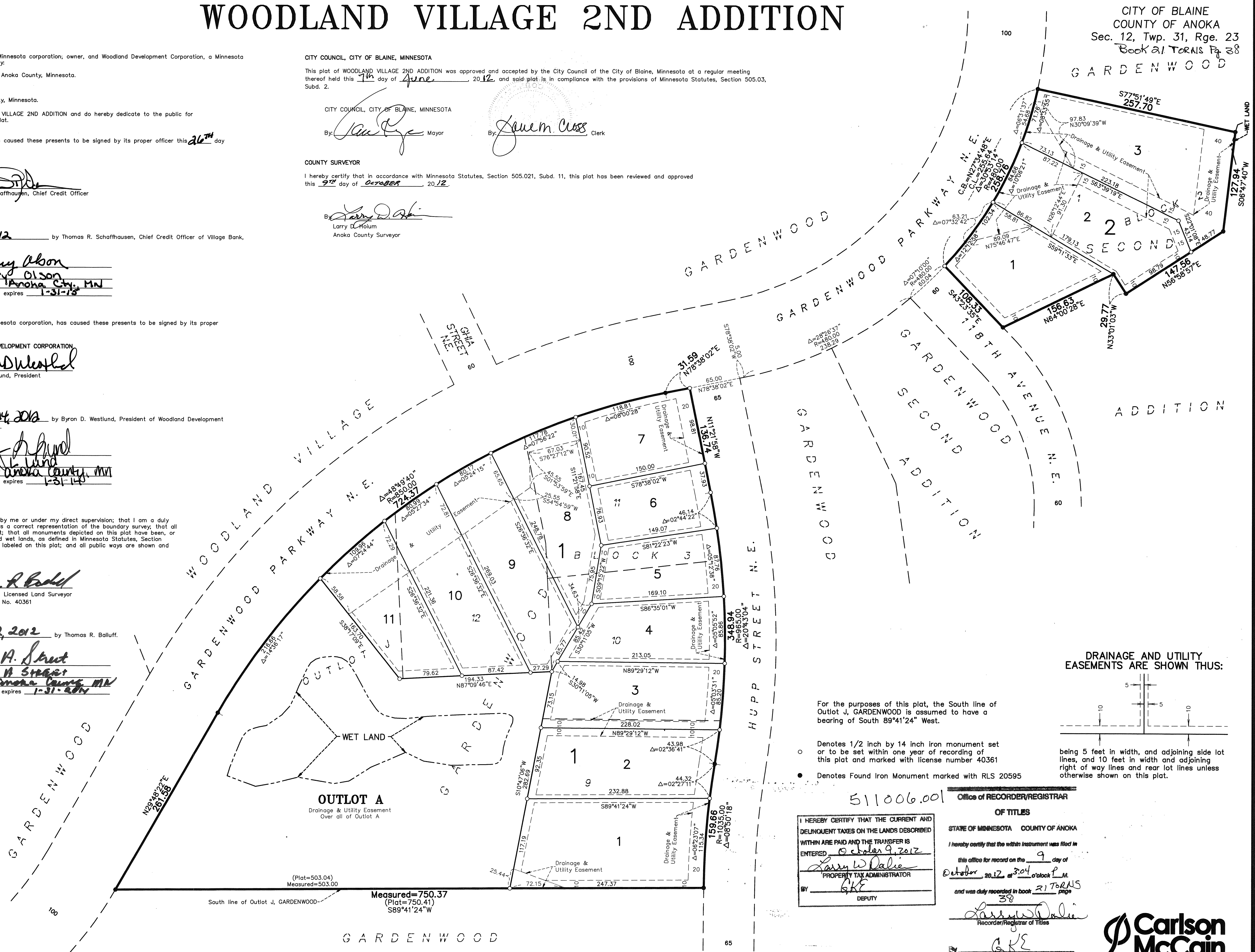
CITY COUNCIL, CITY OF BLAINE, MINNESOTA

By: *Ken Rye* Mayor  
By: *Jaqueline Cross* Clerk

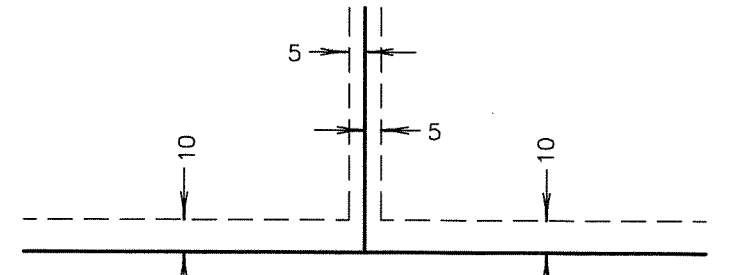
COUNTY SURVEYOR

I hereby certify that in accordance with Minnesota Statutes, Section 505.021, Subd. 11, this plat has been reviewed and approved this 2<sup>nd</sup> day of October, 2012.

*Larry D. Holm*  
Larry D. Holm  
Anoka County Surveyor



DRAINAGE AND UTILITY EASEMENTS ARE SHOWN THUS:



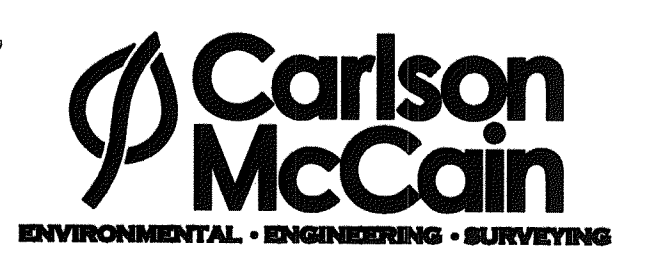
For the purposes of this plat, the South line of Outlot J, GARDENWOOD is assumed to have a bearing of South 89°41'24" West.

- Denotes 1/2 inch by 14 inch iron monument set or to be set within one year of recording of this plat and marked with license number 40361
- Denotes Found Iron Monument marked with RLS 20595

511006.00  
Office of RECORDER/REGISTRAR OF TITLES

I HEREBY CERTIFY THAT THE CURRENT AND DELINQUENT TAXES ON THE LANDS DESCRIBED WITHIN ARE PAID AND THE TRANSFER IS ENTERED  
October 9, 2012  
*Larry W. Dalie*  
PROPERTY TAX ADMINISTRATOR  
BY: *GKE*  
DEPUTY

STATE OF MINNESOTA COUNTY OF ANOKA  
I hereby certify that the within instrument was filed in this office for record on the 9 day of October, 2012, at 3:04 o'clock P.M.  
and was duly recorded in book 21 TORNIS page 38  
*Larry W. Dalie*  
Recorder/Registrar of Titles  
BY: *GKE*  
Deputy



\$56.00