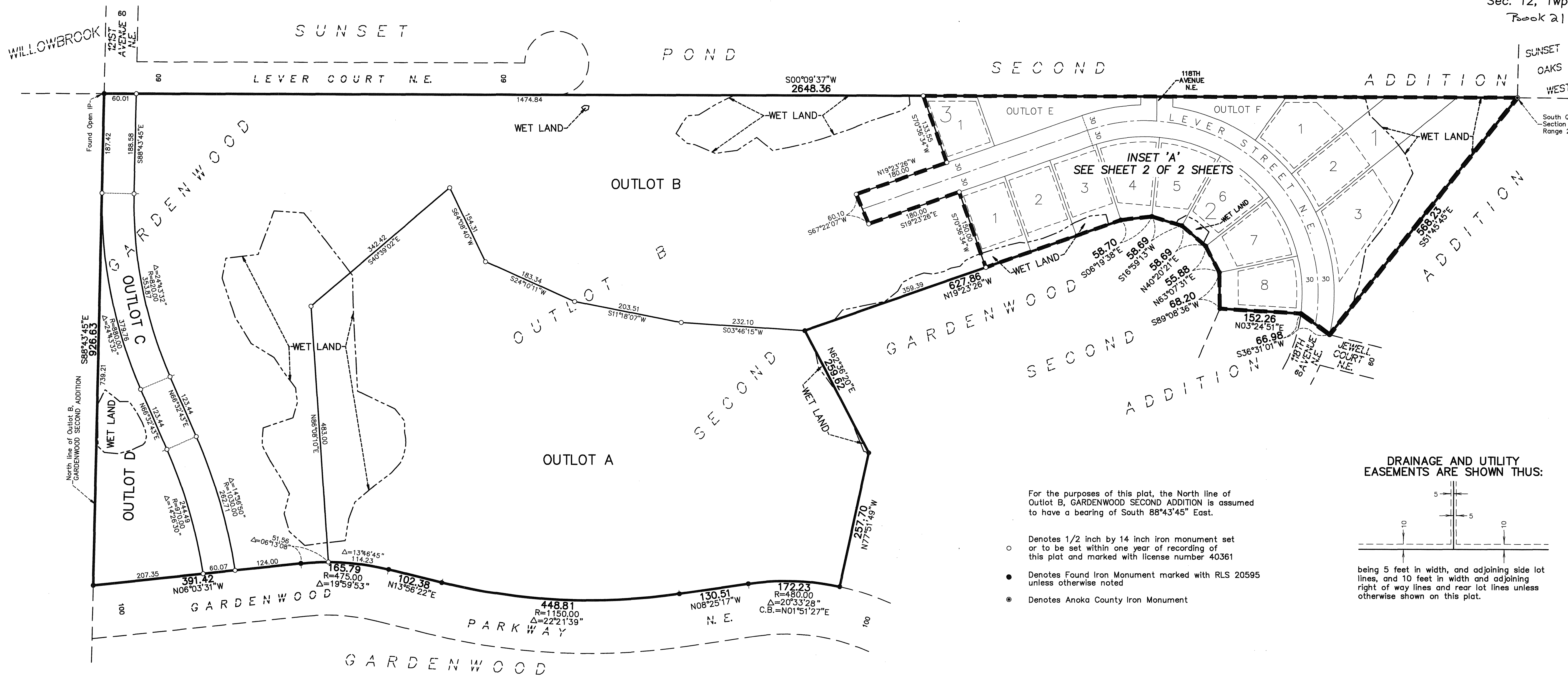
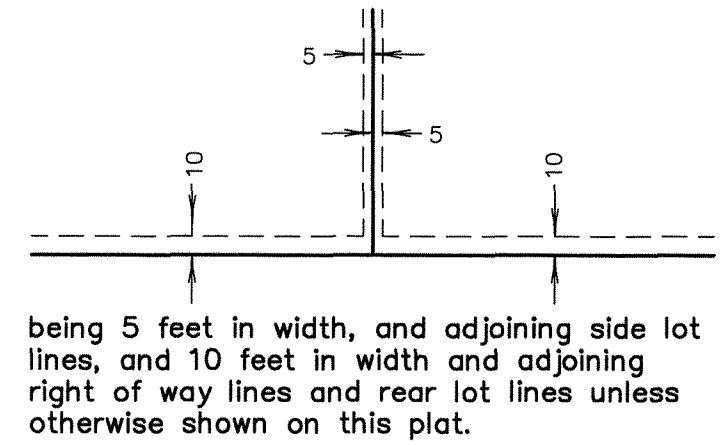


# WOODLAND VILLAGE 3RD ADDITION

CITY OF BLAINE .  
COUNTY OF ANOKA  
Sec. 12, Twp. 31, Rge. 23  
Book 21 TOWNS Pg 37



### DRAINAGE AND UTILITY EASEMENTS ARE SHOWN THUS:



For the purposes of this plat, the North line of Outlot B, GARDENWOOD SECOND ADDITION is assumed to have a bearing of South 88°43'45" East.

- Denotes 1/2 inch by 14 inch iron monument set or to be set within one year of recording of this plat and marked with license number 40361
- Denotes Found Iron Monument marked with RLS 20595 unless otherwise noted
- ⊙ Denotes Anoka County Iron Monument

KNOW ALL PERSONS BY THESE PRESENTS: That Village Bank, a Minnesota corporation, owner, and Woodland Development Corporation, a Minnesota corporation, contract purchaser of the following described property:

Outlot B, GARDENWOOD SECOND ADDITION, Anoka County, Minnesota

Have caused the same to be surveyed and platted as WOODLAND VILLAGE 3RD ADDITION and do hereby dedicate to the public for public use the public ways and drainage and utility easements as shown on this plat.

In witness whereof said Village Bank, a Minnesota corporation, has caused these presents to be signed by its proper officer this 19th day of September, 2012.

VILLAGE BANK  
*Randy L. Diers*  
Randy L. Diers, President

STATE OF MINNESOTA  
COUNTY OF Anoka  
This instrument was acknowledged before me on September 19, 2012 by Randy L. Diers, President of Village Bank, a Minnesota corporation, on behalf of the corporation.

*Shawn L. Lund*  
Shawn L. Lund  
Notary Public, Anoka County, Minnesota  
My commission expires 1-31-14

In witness whereof said Woodland Development Corporation, a Minnesota corporation, has caused these presents to be signed by its proper officer this 19th day of September, 2012.

WOODLAND DEVELOPMENT CORPORATION  
*Byron B. Westlund*  
Byron B. Westlund, President

STATE OF MINNESOTA  
COUNTY OF Anoka  
This instrument was acknowledged before me on September 19, 2012 by Byron D. Westlund, President of Woodland Development Corporation, a Minnesota corporation, on behalf of the corporation.

*Shawn L. Lund*  
Shawn L. Lund  
Notary Public, Anoka County, Minnesota  
My commission expires 1-31-14

I, Thomas R. Balluff do hereby certify that this plat was prepared by me or under my direct supervision; that I am a duly Licensed Land Surveyor in the State of Minnesota; that this plat is a correct representation of the boundary survey; that all mathematical data and labels are correctly designated on this plat; that all monuments depicted on this plat have been, or will be correctly set within one year; that all water boundaries and wet lands, as defined in Minnesota Statutes, Section 505.01, Subd. 3, as of the date of this certificate are shown and labeled on this plat; and all public ways are shown and labeled on this plat.  
Dated this 19th day of SEPTEMBER, 2012.

*Thomas R. Balluff*  
Thomas R. Balluff, Licensed Land Surveyor  
Minnesota License No. 40361

STATE OF MINNESOTA  
COUNTY OF Anoka  
This instrument was acknowledged before me on Sept. 19, 2012 by Thomas R. Balluff.

*Kelly A. Street*  
Kelly A. Street  
Notary Public, Anoka County, MN  
My commission expires 1-31-2014

CITY COUNCIL, CITY OF BLAINE, MINNESOTA  
This plat of WOODLAND VILLAGE 3RD ADDITION was approved and accepted by the City Council of the City of Blaine, Minnesota at a regular meeting thereof held this 16th day of August, 2012 and said plat is in compliance with the provisions of Minnesota Statutes, Section 505.03, Subd. 2.

CITY COUNCIL, CITY OF BLAINE, MINNESOTA  
By: *[Signature]* Mayor  
By: *[Signature]* Clerk

COUNTY SURVEYOR  
I hereby certify that in accordance with Minnesota Statutes, Section 505.021, Subd. 11, this plat has been reviewed and approved this 9th day of October, 2012.

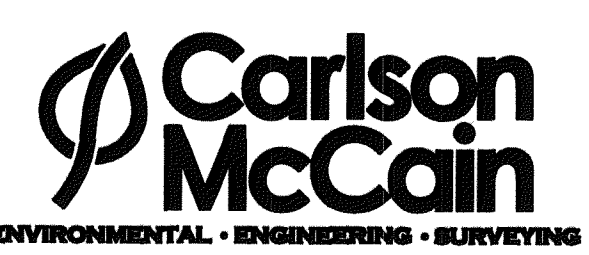
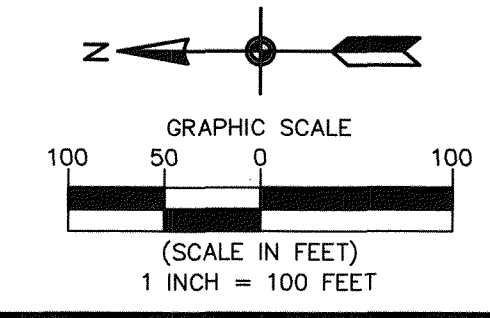
511006.002

Office of RECORDER/REGISTRAR  
OF TITLES

STATE OF MINNESOTA COUNTY OF ANOKA  
I hereby certify that the within instrument was filed in this office for record on the 9 day of October, 2012 at 3:04 o'clock P.M. and was duly recorded in book 21 page 39  
*[Signature]*  
Recorder/Registrar of Titles

By: *[Signature]*  
Larry G. Holium  
Anoka County Surveyor

I HEREBY CERTIFY THAT THE CURRENT AND DELINQUENT TAXES ON THE LANDS DESCRIBED WITHIN ARE PAID AND THE TRANSFER IS ENTERED October 9, 2012  
*[Signature]*  
PROPERTY TAX ADMINISTRATOR  
BY: *[Signature]*  
DEPUTY

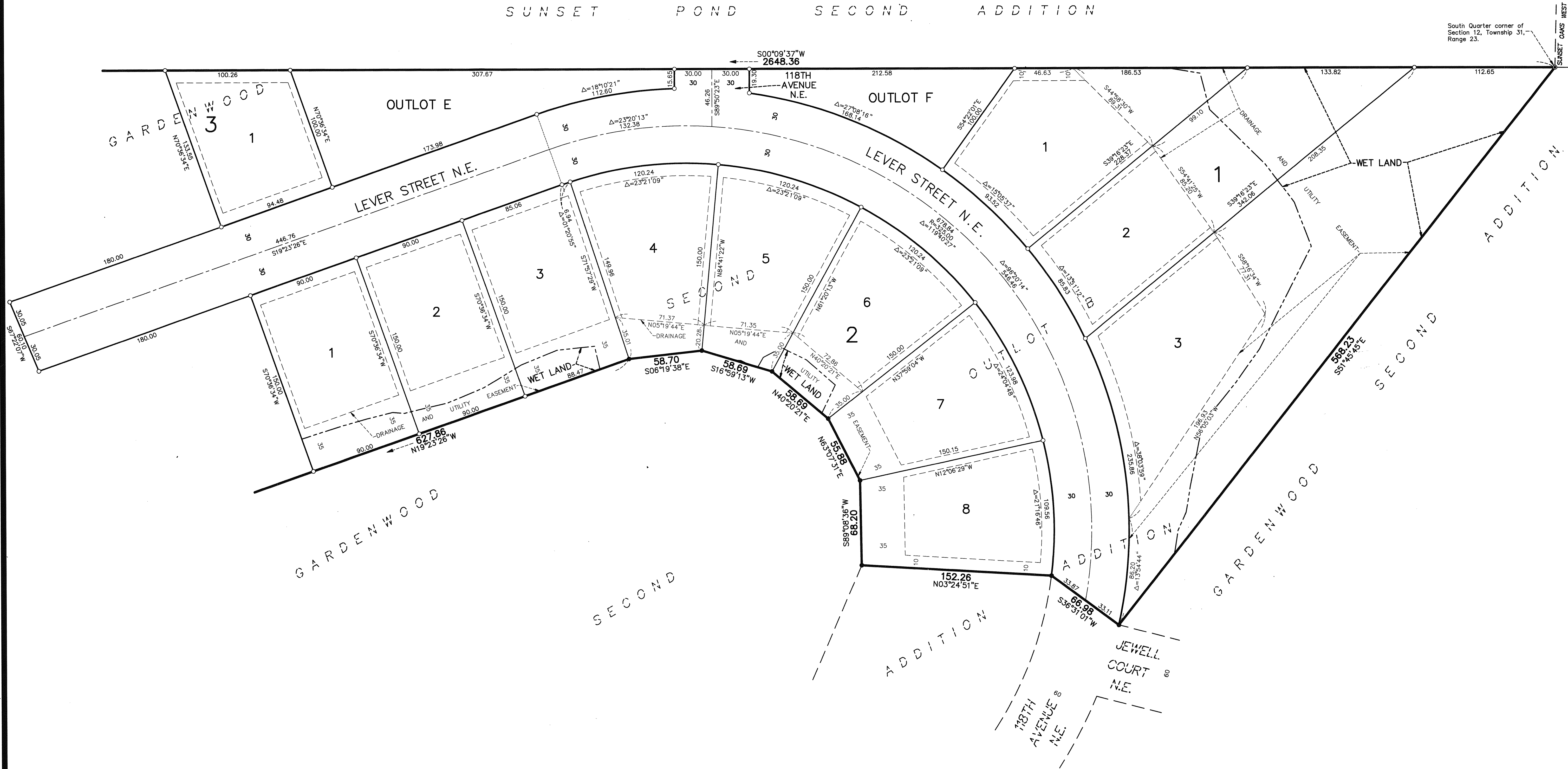


# WOODLAND VILLAGE 3RD ADDITION

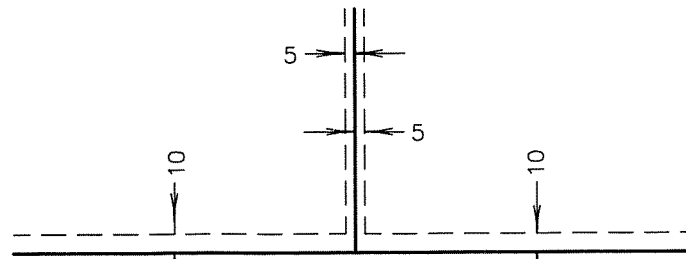
INSET 'A'

CITY OF BLAINE  
COUNTY OF ANOKA  
Sec. 12, Twp. 31, Rge. 23  
Book 21 Page 39  
TORUS

SUNSET POND SECOND ADDITION



DRAINAGE AND UTILITY EASEMENTS ARE SHOWN THUS:



being 5 feet in width, and adjoining side lot lines, and 10 feet in width and adjoining right of way lines and rear lot lines unless otherwise shown on this plat.

For the purposes of this plat, the North line of Outlot B, GARDENWOOD SECOND ADDITION is assumed to have a bearing of South 88°43'45" East.

- Denotes 1/2 inch by 14 inch iron monument set or to be set within one year of recording of this plat and marked with license number 40361
- Denotes Found Iron Monument marked with RLS 20595
- ⊙ Denotes Anoka County Iron Monument

